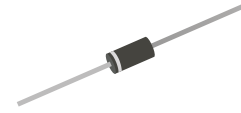


## HER301-G Thru. HER308-G

Voltage: 50 to 1000 V

Current: 3.0 A

RoHS Device

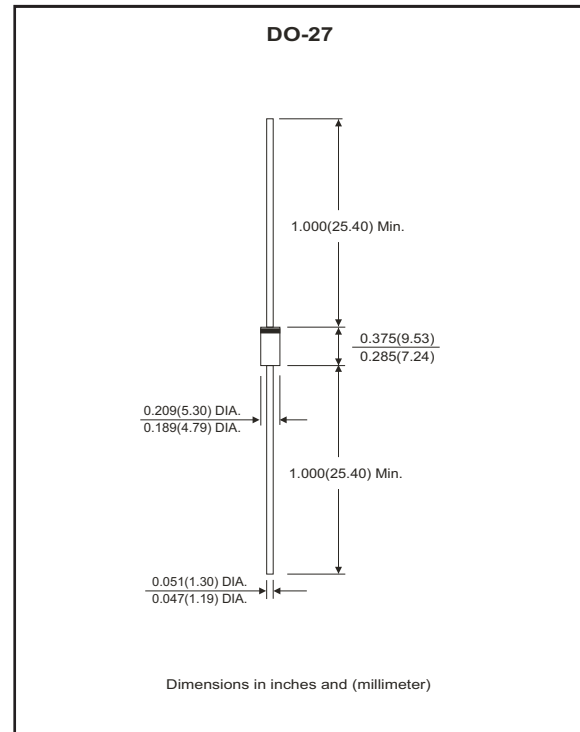


### Features

- Glass passivated chip.
- Low forward voltage.
- High reliability.
- High surge current capability.
- High speed switching.

### Mechanical data

- Case: JEDEC DO-27 molded plastic.
- Epoxy: UL 94V-0 rate flame retardant.
- Polarity: Color band denotes cathode end.
- Lead: Solderable per MIL-STD-202, method 208 guaranteed.
- Mounting position: Any
- Weight: 0.844 grams



### Electrical Characteristics (at TA=25°C unless otherwise noted)

Ratings at 25°C ambient temperature unless otherwise specified.

Single phase, half wave, 60Hz, resistive or inductive load.

For capacitive load derate current by 20%.

Parameter	Symbol	HER301 -G	HER302 -G	HER303 -G	HER304 -G	HER305 -G	HER306 -G	HER307 -G	HER308 -G	Unit	
Maximum repetitive peak reverse voltage @IT = 5μA	V <sub>RRM</sub>	50	100	200	300	400	600	800	1000	V	
Maximum RMS voltage	V <sub>RMS</sub>	35	70	140	210	280	420	560	700	V	
Maximum DC blocking voltage	V <sub>DC</sub>	50	100	200	300	400	600	800	1000	V	
Maximum average forward rectified current @TA=25°C	I <sub>(AV)</sub>	3.0								A	
Maximum instantaneous forward voltage at specified current	V <sub>F</sub>	1.0			1.3		1.7			V	
Maximum DC reverse current	I <sub>R</sub>	5.0								μA	
Maximum reverse recovery time (Note 1)	t <sub>rr</sub>	50					75				ns
Operating temperature range	T <sub>J</sub>	-55 ~ +150								°C	
Storage temperature range	T <sub>STG</sub>	-55 ~ +150								°C	

NOTES:

1. Reverse recovery test conditions: I<sub>F</sub>=0.5A, I<sub>R</sub>=1.0A, I<sub>RR</sub>=0.25A(RGI circuit)

## Rating and Characteristic Curves (HER301-G Thru. HER308-G)

Fig.1- Forward Current Derating Curve

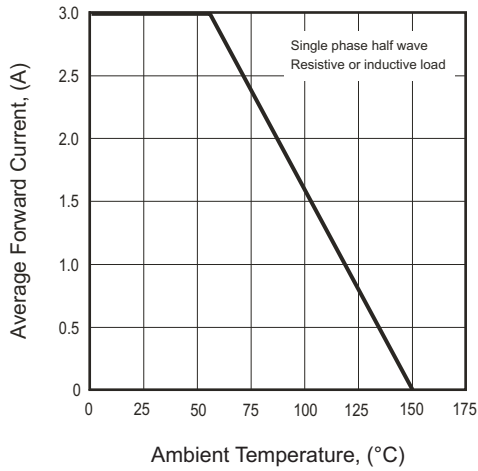


Fig.2- Typical Forward Characteristics

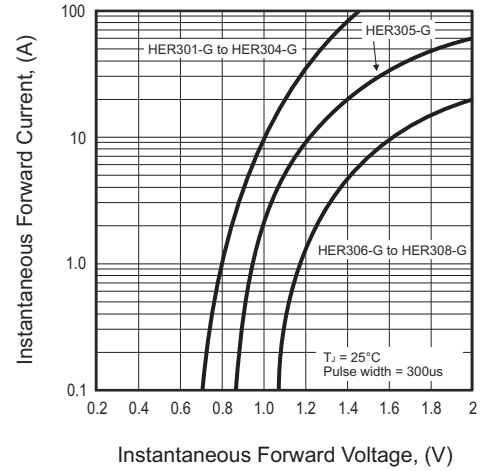


Fig.3- Peak Forward Surge Current

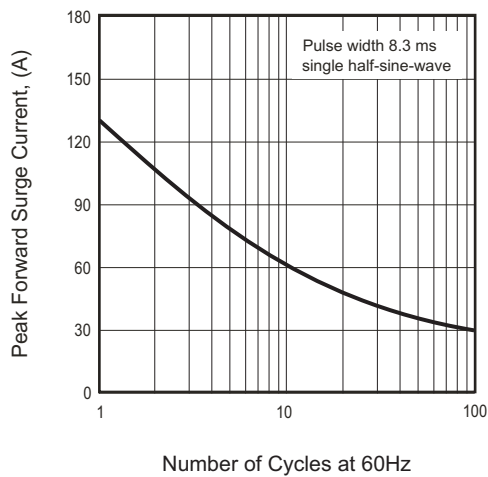
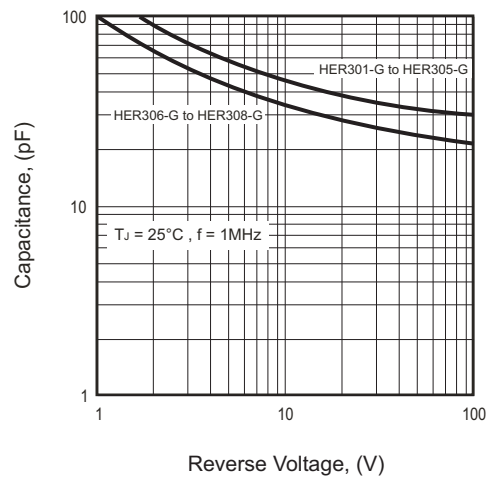
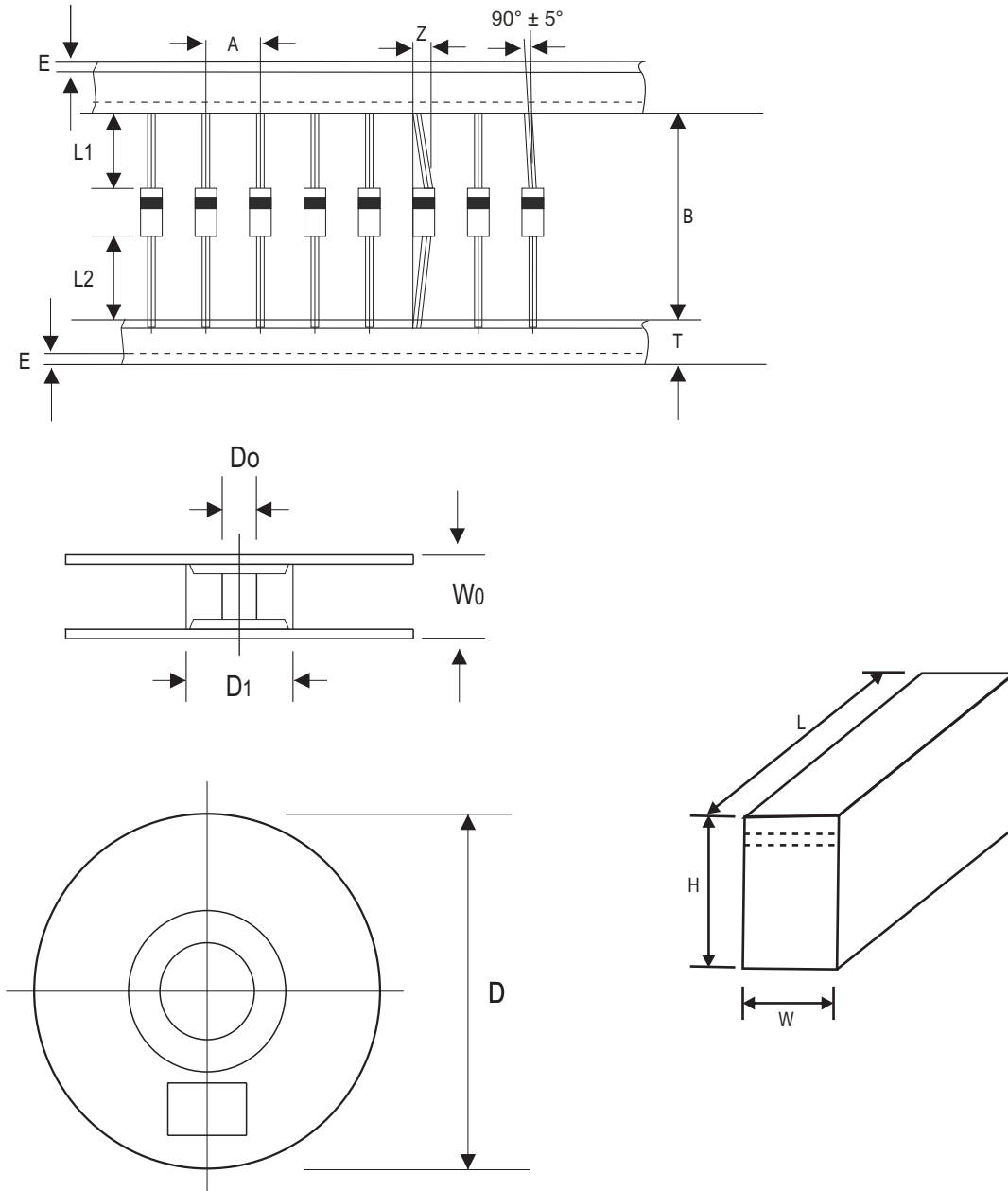


Fig.4- Typical Junction Capacitance



## Taping Specification For Axial Lead Diodes



DO-27	SYMBOL	A	B	Z	T	E	L1-L2
	(mm)	10.0 ± 0.50	52.0 ± 0.50	1.2 (max)	6.0 ± 0.40	1.0 (max)	1.0 (max)
	(inch)	0.394 ± 0.020	2.047 ± 0.020	0.047 (max)	0.236 ± 0.016	0.039 (max)	0.039 (max)

DO-27	SYMBOL	D1	D0	D	W0	L	W	H
	(mm)	85.7 ± 0.3	16.6 ± 0.4	330	72.0 ± 0.3	260.0 ± 5.0	80.0 ± 5.0	145.0 ± 5.0
	(inch)	3.374 ± 0.012	0.654 ± 0.016	13	2.835 ± 0.012	10.236 ± 0.197	3.150 ± 0.197	5.709 ± 0.197

## Marking Code

Part Number	Marking code	Packaging
HER301-G	HER301	AMMO
HER302-G	HER302	AMMO
HER303-G	HER303	AMMO
HER304-G	HER304	AMMO
HER305-G	HER305	AMMO
HER306-G	HER306	AMMO
HER307-G	HER307	AMMO
HER308-G	HER308	AMMO
HER301B-G	HER301	BULK
HER302B-G	HER302	BULK
HER303B-G	HER203	BULK
HER304B-G	HER204	BULK
HER305B-G	HER205	BULK
HER306B-G	HER206	BULK
HER307B-G	HER207	BULK
HER308B-G	HER208	BULK
HER301T-G	HER201	REEL
HER302T-G	HER202	REEL
HER303T-G	HER203	REEL
HER304T-G	HER204	REEL
HER305T-G	HER205	REEL
HER306T-G	HER206	REEL
HER307T-G	HER207	REEL
HER308T-G	HER208	REEL



**XXX = Product type marking code**

## Standard Package

Case Type	AMMO PACK		
	BOX (EA)	Box / Carton	CARTON (EA)
DO-27	1,200	10	12,000

Case Type	BULK PACK		
	BOX (EA)	Box / Carton	CARTON (EA)
DO-27	200	50	10,000
	500	24	12,000

Case Type	AMMO REEL			
	REEL (EA)	Reel / Carton	CARTON (EA)	Reel Size (inch)
DO-27	1,200	4	4,800	13