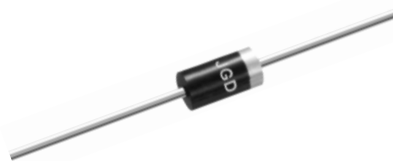


Features

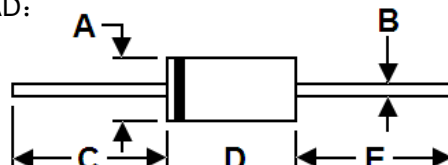
- * Low Forward Voltage Drop
- * High Current Capability
- * High Reliability
- * High Surge Current Capability



RoHS
COMPLIANT

Package Outline Dimensions

DO-201AD:



DIM.	Unit (mm)		Unit (inch)	
	Min	Max	Min	Max
A	4.8	5.3	0.189	0.209
B	1.2	1.3	0.047	0.051
C	25.4	-	1.0	-
D	7.2	9.6	0.283	0.378
E	25.4	-	1.0	-

Mechanical Data

- * Case: Molded plastic
- * Epoxy: UL 94V-0 rate flame retardant
- * Lead: Axial leads, solderable per MIL-STD-202, method 208 guaranteed
- * Polarity: Color band denotes cathode end
- * Mounting Position: Any

Maximum Ratings and Electrical Characteristics

Rating at 25 °C ambient temperature unless otherwise specified. Single phase, half wave, 60 Hz, resistive or inductive load. For capacitive load, derate current by 20%.

Type Number	Symbol	HER 501G	HER 502G	HER 503G	HER 504G	HER 505G	HER 506G	HER 507G	HER 508G	Unit	
Maximum Recurrent Peak Reverse Voltage	V_{RRM}	50	100	200	300	400	600	800	1000	V	
Maximum RMS Voltage	V_{RMS}	35	70	140	210	280	420	560	700	V	
Maximum D.C Blocking Voltage	V_{DC}	50	100	200	300	400	600	800	1000	V	
Maximum Average Forward Rectified Current .375" (9.5mm)Lead Length	$I_{F(AV)}$	5.0								A	
Peak Forward Surge Current, 8.3ms single half sine-wave superimposed on rated load(JEDEC method)	I_{FSM}	150								A	
Maximum Instantaneous Forward Voltage at 5.0A(Note1)	V_F	1.0			1.3		1.7			V	
Maximum D.C Reverse Current @ $T_A=25^{\circ}C$ at Rated D.C Blocking Voltage @ $T_A=125^{\circ}C$	I_R	5.0 200								μA	
Maximum Reverse Recovery Time(Note2)	T_{rr}	50					75				nS
Typical Junction Capacitance(Note3)	C_J	80					50				pF
Operating and Storage Temperature Range	T_J/T_{STG}	-55 to +150								$^{\circ}C$	

Note: 1、 Each Lead mounted on a 0.8×0.8×0.04"(20×20×1mm) copper heat-sink.

2、 Reverse Recovery Test Conditions: $I_F=0.5A$, $I_R=1.0A$, $I_{RR}=0.25A$. 3、 Measured at 1MHz and Applied Reverse Voltage of 4.0V D.C.

Ratings and Characteristic Curves

FIG. 1- MAXIMUM FORWARD CURRENT DERATING CURVE

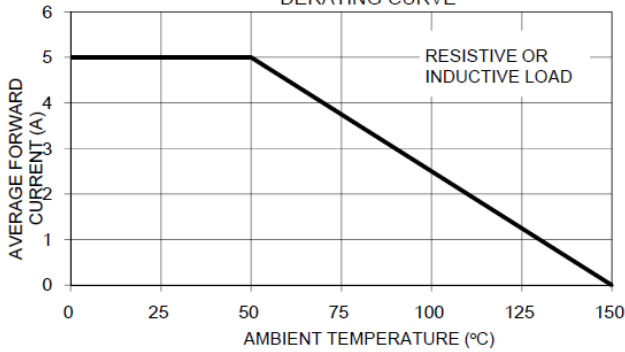


FIG. 2- TYPICAL REVERSE CHARACTERISTICS

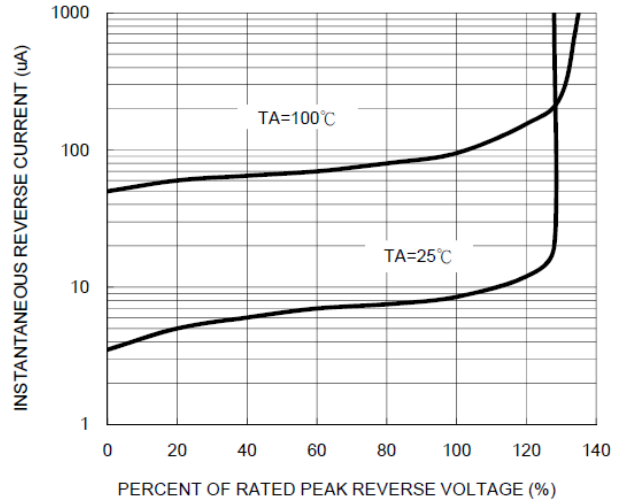


FIG. 3- MAXIMUM NON-REPETITIVE FORWARD SURGE CURRENT

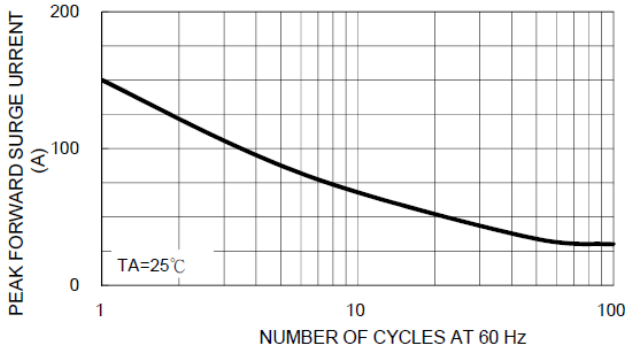


FIG. 5- TYPICAL INSTANTANEOUS FORWARD CHARACTERISTICS

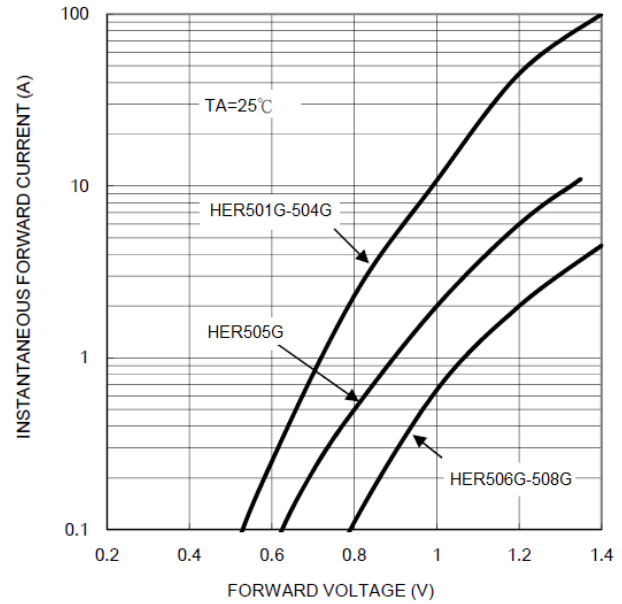


FIG. 4- TYPICAL JUNCTION CAPACITANCE

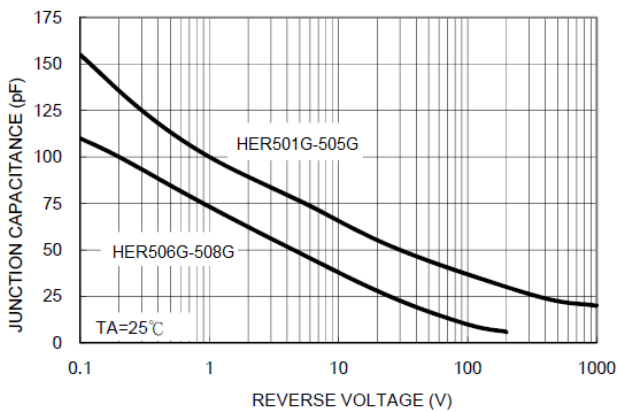
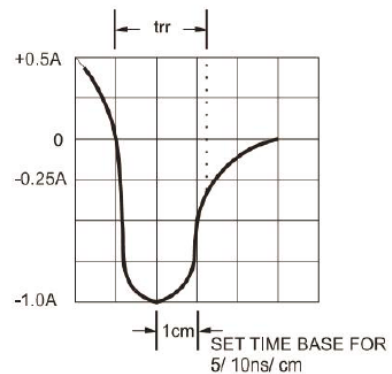
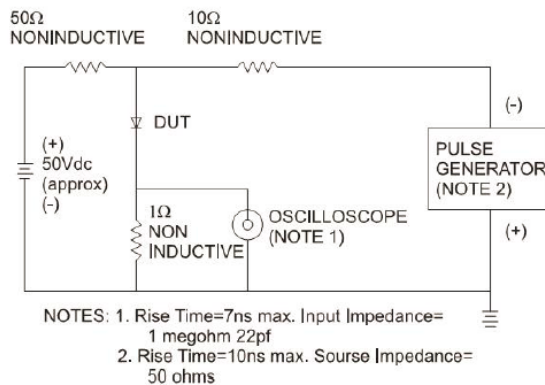


FIG. 6- REVERSE RECOVERY TIME CHARACTERISTIC AND TEST CIRCUIT DIAGRAM





HER501G THRU HER508G

5.0 Amps. Glass Passivated High Efficiency Rectifiers

Ordering Information

Part No.	Package	Packing
HER501G~HER508G	DO-201AD	0.8K/AMMO box
HER501G~HER508G	DO-201AD	1.2K/AMMO box
HER501G~HER508G	DO-201AD	1.2K/13" Paper reel
HER501G~HER508G	DO-201AD	0.5K/Bulk packing