

# HF9319

# 1/2 CYSTAL CAN 4 FORM C HERMETICALLY SEALED ELECTRO MAGNETIC RELAY



### Features

- 4 form C
- Load can be 2A 28Vd.c.
- High ambient applicability
- All metal welded construction
- Hermetically welded and marked by laser

### AMBIENT ADAPTABILITY

Ambient grade	I	II	III
Ambient temperature	-55 °C to 85 °C	-55 °C to 85 °C	-65 °C to 125 °C
Humidity			98 %, 40 °C
Low air pressure	58.53 kPa	4.39 kPa	4.39 kPa
Sine vibration	Frequency	10 Hz to 500 Hz	10 Hz to 2000 Hz
	Acceleration	98 m/s <sup>2</sup>	147 m/s <sup>2</sup>
Shock resistance	490 m/s <sup>2</sup>	490 m/s <sup>2</sup>	735 m/s <sup>2</sup>
Random vibration	—	10 (m/s <sup>2</sup> ) <sup>2</sup> /Hz	20 (m/s <sup>2</sup> ) <sup>2</sup> /Hz
Steady-state acceleration	490 m/s <sup>2</sup>	490 m/s <sup>2</sup>	735 m/s <sup>2</sup>

### CONTACT DATA

Ambient grade	I	II	III
Arrangement			4 C
Contact resistance	Initial max.		50 mΩ
	After life max.		150 mΩ

### Contact ratings

Ambient grade	Contact load	Type	Electrical life min.
I	2 A 28 Vd.c.	Resistive	2 x 10 <sup>4</sup> ops
II	2 A 28 Vd.c.	Resistive	5 x 10 <sup>4</sup> ops
III	2 A 28 Vd.c.	Resistive	1 x 10 <sup>5</sup> ops
	0.3 A 115 Va.c.,50Hz~400Hz	Resistive	1 x 10 <sup>5</sup> ops
	0.75 A 28 Vd.c. 200 mH	Inductive	1 x 10 <sup>5</sup> ops
	50 μA 50 mVd.c.	Low level	1 x 10 <sup>5</sup> ops



HONGFA HERMETICALLY SEALED RELAY

## SPECIFICATION

Ambient grade		I	II	III
Insulation resistance min.		50 MΩ (@ 500 Vd.c.)	100 MΩ (@ 500 Vd.c.)	1000 MΩ (@ 500 Vd.c.)
Dielectric strength min. (Normal condition)	Between open contacts	350 Vr.m.s.	350 Vr.m.s.	350 Vr.m.s.
	Between contact & coil	350 Vr.m.s.	350 Vr.m.s.	500 Vr.m.s.
	Between contact & cover	350 Vr.m.s.	350 Vr.m.s.	500 Vr.m.s.
	Between contact group	350 Vr.m.s.	350 Vr.m.s.	500 Vr.m.s.
	Between coil & cover	350 Vr.m.s.	350 Vr.m.s.	500 Vr.m.s.
Dielectric strength min. (Low air pressure condition)		300 Vr.m.s.	300 Vr.m.s.	350 Vr.m.s.
Leakage rate max.		1 Pa·cm <sup>3</sup> /s	1 x 10 <sup>-1</sup> Pa·cm <sup>3</sup> /s	1 x 10 <sup>-3</sup> Pa·cm <sup>3</sup> /s
Operate time max.		5 ms		
Release time max.		5 ms		
Mounting style		See the mounting dimension		
Terminals		See the terminal styles		
Work position		Random		
Weight max.		13 g		

## COIL DATA

Normal coil power	Approx.1.2W
-------------------	-------------

### Coil Version

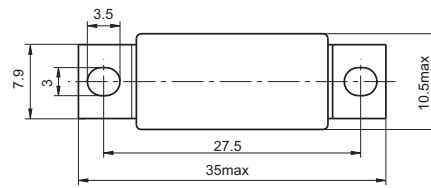
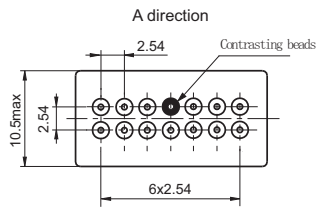
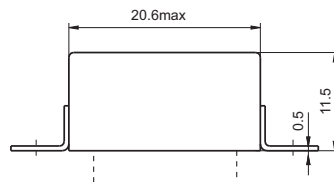
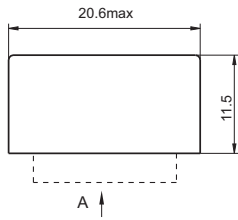
Order Number	Coil voltage		at 25 °C				-65°C to 125°C		
	Nominal voltage	Value max.	Coil resistance (1±10%) Ω	Pick-up voltage max.	Hold voltage max.	Drop-out voltage min.	Pick-up voltage max.	Hold voltage max.	Drop-out voltage min.
005	5	6.0	21	3.00	1.65	0.29	4.2	2.4	0.21
006	6	7.5	30	3.60	2.00	0.35	5.1	2.9	0.25
009	9	11.8	68	5.40	3.00	0.52	7.7	4.3	0.38
012	12	15.0	125	7.30	4.00	0.70	10.5	5.8	0.50
024	24	28.8	480	14.80	7.50	1.20	20.8	11.6	0.90
027	27	32.0	600	16.00	8.50	1.50	22.5	14.0	1.00

**Notes:** We can offer many kinds of of coil voltage under the requirement of users.

## ORDERING INFORMATION

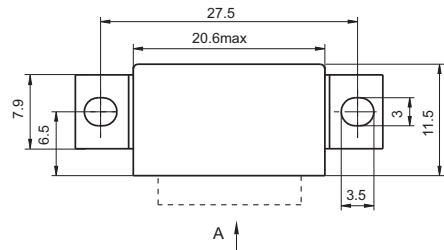
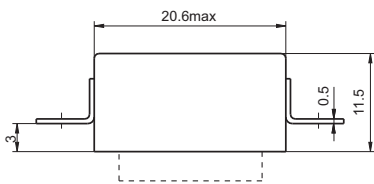
Type	HF9319	-012	-0	1	- I
Order Number	005、006、009、012、018、027				
Mounting Style	0, 1, 2, 3 (See the mounting dimension)				
Terminals Style	1 (See " Terminal styles " below)				
Ambient Grade	I 、 II 、 III				

Outline Dimension



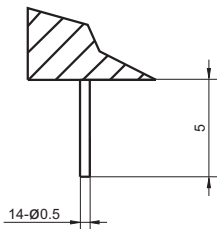
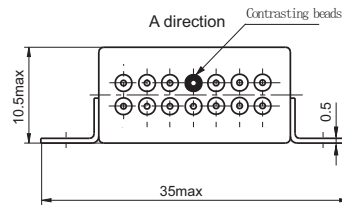
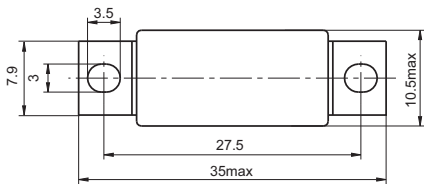
Mouting style 0

Mouting style 1

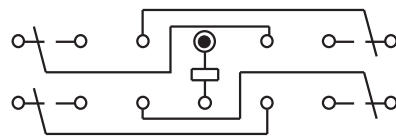


Mouting style 2

Mouting style 3



Terminal style 1  
(Solder pin)



Wiring Diagram  
(Bottom View)

**Disclaimer**

This datasheet is for the customers' reference. All the specifications are subject to change without notice.

© Xiamen Hongfa Hermetically Sealed Relays Co., Ltd. All rights of Hongfa are reserved.