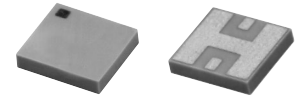


Ceramic High Pass Filter

2300 to 5500 MHz

NEW!

HFTC-19



BLUE CELL™

CASE STYLE: FR933
PRICE: \$3.75 ea. QTY (10-49)

Maximum Ratings

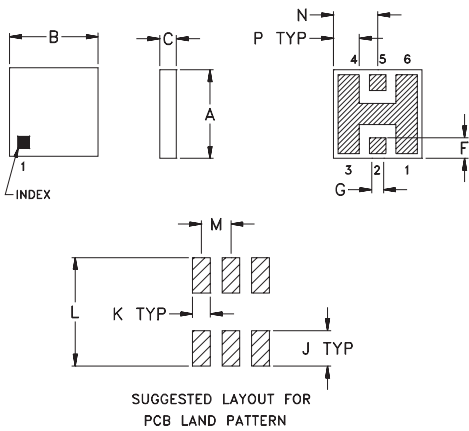
Operating Temperature	-55°C to 100°C
Storage Temperature	-55°C to 125°C

Pin Connections

RF IN	2**
RF OUT	5**
GROUND	1,3,4,6

** RF IN & RF OUT can be interchanged

Outline Drawing

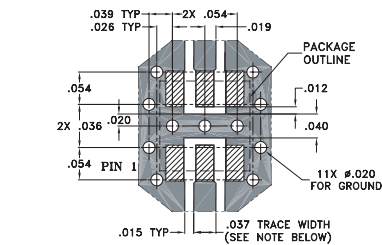


TOLERANCE UNLESS OTHERWISE STATED
2 PLACES DECIMAL: ±.01
3 PLACES DECIMAL: ±.005

Outline Dimensions (inch)

A	B	C	D	E	F	G	H	J	K	L	M	N	P	wt.
.150	.150	.028	—	—	.035	.028	—	.060	.030	.184	.050	.075	.044	grams
3.81	3.81	0.71	—	—	0.89	0.71	—	1.52	0.76	4.67	1.27	1.91	1.12	0.15

Demo Board MCL P/N: TB-233 Suggested PCB Layout (PL-112)



NOTE: TRACE WIDTH IS SHOWN FOR ROGERS RO4350 WITH DIELECTRIC THICKNESS .020" ± .0015".
COPPER: 1/2 OZ. EACH SIDE.
FOR OTHER MATERIALS TRACE WIDTH MAY NEED TO BE MODIFIED.

■ DENOTES PCB COPPER LAYOUT
▨ DENOTES COPPER LAND PATTERN FREE OF SOLDERMASK

Features

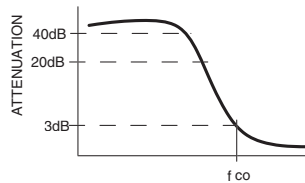
- miniature size, 0.15"X0.15"X.028"
- low profile, .028" height
- low pass band insertion loss, 1.0 dB typ.
- high power handling, 10W

High Pass Filter Electrical Specifications (T_{AMB}=25°C)

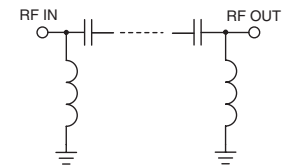
MODEL NO.	STOP BAND (MHz)		f _{co} , MHz Nom. (loss 3 dB) Typ.	PASSBAND (MHz)	VSWR (:1)		POWER INPUT* (W)	MARKING	NO. OF SECTIONS
	(loss >40 dB)	(loss >20 dB)			Stopband Typ.	Passband Typ.			
HFTC-19	DC-1450	1650	1995	2300-5500	18	1.3	10	HF6	7

* Derate linearly to 4W at 100°C ambient

typical frequency response



schematic



Typical Performance Data at 25°C

Frequency (MHz)	Insertion Loss (dB)	VSWR (:1)
1.00	103.75	436.58
500.00	49.23	81.78
1000.00	42.91	64.39
1450.00	54.47	47.42
1650.00	27.32	32.07
1995.00	4.42	3.50
2300.00	0.94	1.19
3600.00	0.51	1.11
4000.00	0.52	1.16
5500.00	0.66	1.25

