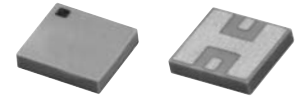


Ceramic High Pass Filter

1300 to 3500 MHz

NEW!
HFTC-9R5



BLUE CELL™

CASE STYLE: FR933
PRICE: \$3.75 ea. QTY (10-49)

Maximum Ratings

Operating Temperature	-55°C to 100°C
Storage Temperature	-55°C to 125°C

Pin Connections

RF IN	2**
RF OUT	5**
GROUND	1,3,4,6

** RF IN & RF OUT can be interchanged

Features

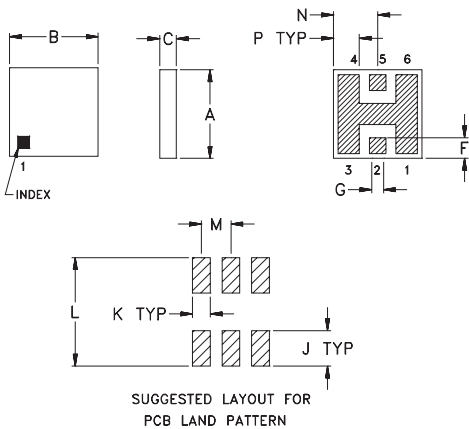
- miniature size, 0.15"X0.15"X.028"
- low profile, .028" height
- low pass band insertion loss, 1.0 dB typ.
- high input power handling, 14W

High Pass Filter Electrical Specifications (T_{AMB}=25°C)

MODEL NO.	STOP BAND (MHz)		f _{co} , MHz Nom. (loss 3 dB) Typ.	PASSBAND (MHz) (loss < 1.3 dB)	VSWR (:1)		POWER INPUT* (W)	MARKING	NO. OF SECTIONS
	(loss >40 dB)	(loss >20 dB)			Stopband Typ.	Passband Typ.			
HFTC-9R5	DC-600	750	950	1300-3500	18	1.3	14	HF7	7

* Derate linearly to 6W at 100°C ambient

Outline Drawing

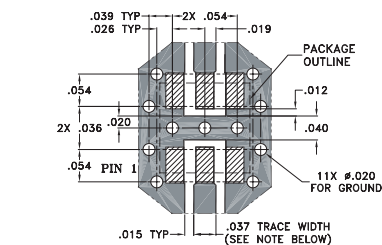


TOLERANCE UNLESS OTHERWISE STATED
2 PLACES DECIMAL: ±.01
3 PLACES DECIMAL: ±.005

Outline Dimensions (inch)

A	B	C	D	E	F	G	H	J	K	L	M	N	P	wt. grams
.150	.150	.028	—	—	.035	.028	—	.060	.030	.184	.050	.075	.044	0.15
3.81	3.81	0.71	—	—	0.89	0.71	—	1.52	0.76	4.67	1.27	1.91	1.12	0.15

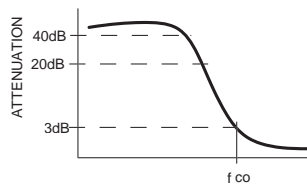
Demo Board MCL P/N: TB-233 Suggested PCB Layout (PL-112)



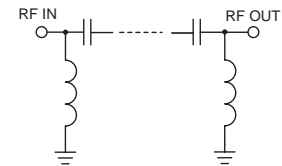
NOTE: TRACE WIDTH IS SHOWN FOR ROGERS RO4350 WITH DIELECTRIC THICKNESS .020" ± .0015".
COPPER: 1/2 OZ. EACH SIDE.
FOR OTHER MATERIALS TRACE WIDTH MAY NEED TO BE MODIFIED.

- DENOTES PCB COPPER LAYOUT
- ▨ DENOTES COPPER LAND PATTERN FREE OF SOLDERMASK

typical frequency response



schematic



Typical Performance Data at 25°C

Frequency (MHz)	Insertion Loss (dB)	VSWR (:1)
1.00	128.65	285.20
600.00	44.78	38.32
750.00	25.06	23.43
950.00	3.28	2.16
1300.00	1.08	1.11
2000.00	0.69	1.08
3000.00	0.59	1.15
3500.00	0.76	1.74
4300.00	1.94	3.28
9000.00	9.82	4.89

