

FEATURES

- High Reliability
- Master Slave Combination
- Small Packaging
- Standard Output Voltage Adjustment
(With External Potentiometer)
- Custom Control Chip Yields Compact Size with Low Cost
- Controls Standard Shindengen Diode/Transistor Pair

SPECIFICATIONS

INPUT

Voltage Range See Model Selection Table
 Max. Input Current See Model Selection Table

OUTPUT

Output Voltage See Model Selection Table

Set Point ±2%

Regulation

Total ±5%

Noise & Ripple, (peak-to-peak)

5V Output 25 mV max.

12V Output 25 mV max.

Output Current See Model Selection Table

Short-Circuit Protection Foldback with automatic reset

Efficiency 75% - 91% (typ.)

Remote ON / OFF

Control Available

Instantaneous Output

Current 7A

ENVIRONMENTAL

Operating Ambient

Temp. -10 to +70°C (See Derating Chart)

Storage Temp. -30 to +85°C

Cooling Conditions With external heat sink

FUNCTIONS

Overload Protection Current limit (automatic reset)

Remote ON/OFF Standard

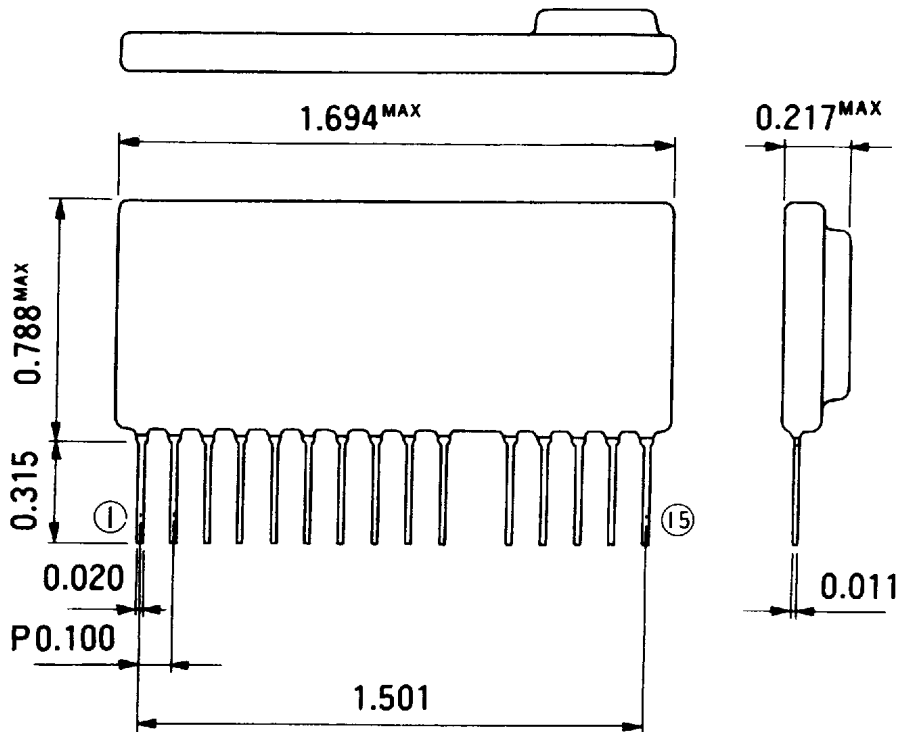
Sync Operation Standard (with external circuit)

MODEL SPECIFICATIONS

Output			Model and Input Range		Diode	Transistor
Volts	Range*	Amps	8-32VDC	17-32VDC		
+5	3 to 11	6.0/7A PK	HLD05000M	—	D15SCA4M	2SA1600
+12	8 to 24	6.0/7A PK	—	HLE12000M	D15SCA4M	2SA1600
-5	-2 to -8	3.0	HLND05000M	—	D15SCA4M	2SA1600
-12	-8 to -20	1.9	HLND12000M	—	D15SCA4M	2SA1600

MECHANICAL SPECIFICATIONS

Size (W x D x H) 0.75 x 1.73 x 0.22 inches (19 x 44 x 6 mm)
 Weight 0.3 oz (8.5 g)

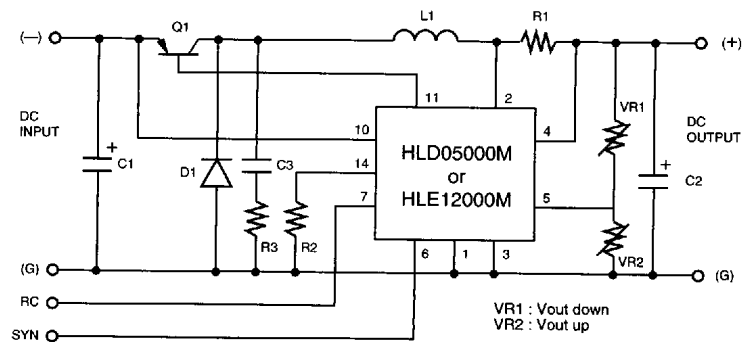


TERMINAL FUNCTION

No.	Function
1	Ground
2	Current detector* (see note)
3	Drooping setting* (see note)
4	Output voltage detector
5	Output voltage adjustment
6	Switching frequency synchronization control
7	Remote control
8	Ground
9	Test* (see note)
10	(+) Input
11	Drive input
12	No connection
13	No connection
14	Resistor connection
15	No connection

*Note: Do not connect when operating normally

STANDARD EXTERNAL CONNECTION DIAGRAM



C1 : 35V 820 μ F
 C2 : 35V 820 μ F x 2(HLD05000M)
 or
 35V 820 μ F x 3(HLE12000M)
 C3 : 50V 680 μ F
 L1 : 50 μ H 6A

R1 : SW 0.02 Ω
 R2 : 1W 47 Ω (HLD05000M)
 or
 5W 150 Ω (HLE12000M)
 R3 : 1/4W 27 Ω
 Q1 : 2SA1600 (40V 12A)
 D1 : D15SCA4M (40V 15A)