

FEATURES

- High Reliability
- Thermal Protection
- Small Packaging
- Standard Output Voltage Adjustment
(With External Potentiometer)
- Custom Control Chip Yields Compact Size with Low Cost
- No Heat Sink Required

SPECIFICATIONS

INPUT

Voltage Range See Model Selection Table

Max. Input Current See Model Selection Table

OUTPUT

Output Voltage See Model Selection Table

Set Point ±2%

Regulation

 Total ±5%

Noise & Ripple, (peak-to-peak)

5V Output 25 mV max.

12V Output 25 mV max.

Output Current See Model Selection Table

Short-Circuit Protection Foldback with automatic reset

Efficiency 75 - 91% (typ.)

Remote ON / OFF
Control Available

Instantaneous Output
Current 0.7A

ENVIRONMENTAL

Operating Ambient
Temp. -10 to +70°C (See Derating Chart)

Storage Temp. -30 to +85°C

Cooling Conditions No external heat sink required

FUNCTIONS

Overload Protection Current limit (automatic reset)

Thermal Protection Standard

Remote ON/OFF Standard

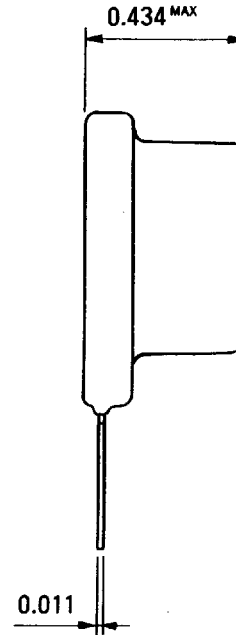
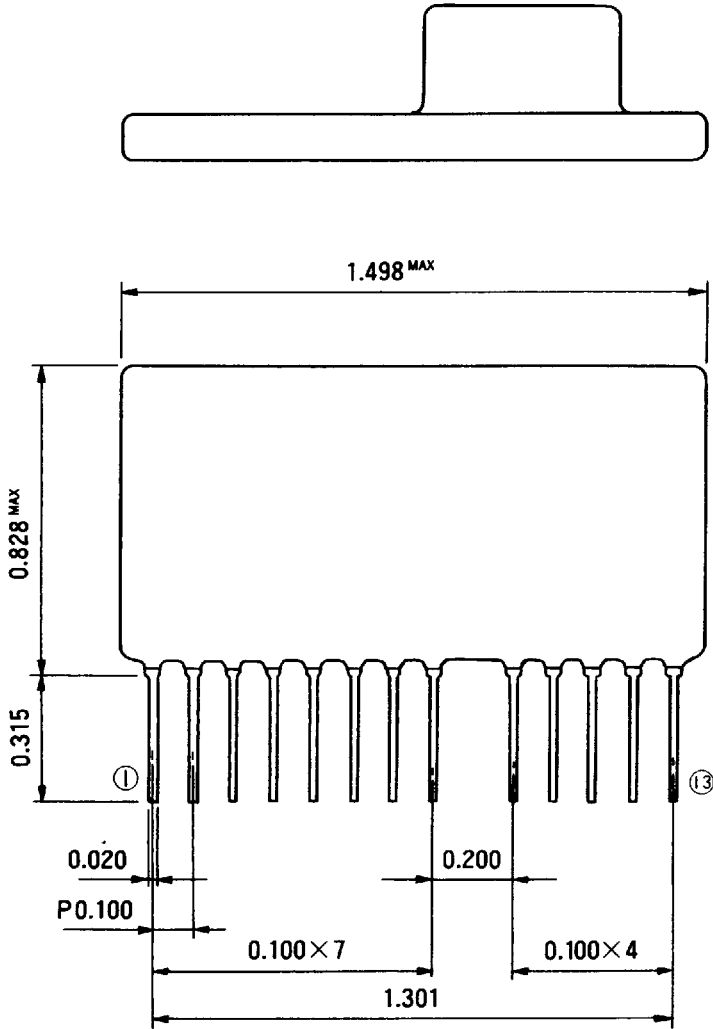
MODEL SPECIFICATIONS

Output			Model and Input Range	
Volts	Range*	Amps	8-32 VDC	17-32 VDC
+5	3 to 11	0.6/1A peak	HLD050R6M	—
+12	8 to 24	0.6/1A peak	—	HLE120R6M
-5	-2 to -8	0.5	HLND050R5M	—
-12	-8 to -20	0.35	HLND12R35M	—

* With external potentiometer

MECHANICAL SPECIFICATIONS

Size (W x D x H) 1.54 x 0.81 x 0.45 inches (39 x 20 x 11 mm)
 Weight Max 0.3 oz (8.5g)

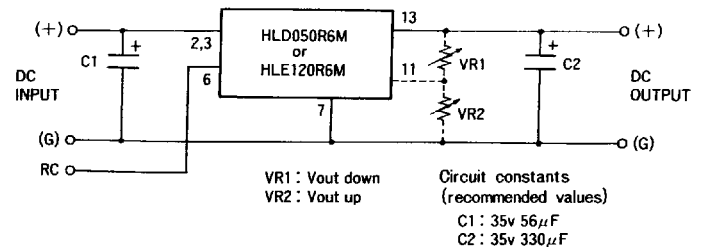


TERMINAL FUNCTION

No.	Function
1	No connection
2	(+) Input
3	(+) Input
4	Test* (see note)
5	No connection
6	Remote control
7	Ground
8	No connection
9	Drooping setting* (see note)
10	Drooping setting* (see note)
11	Output voltage adjustment
12	No connection
13	(+) Output

*Note: Do not connect when operating normally

STANDARD EXTERNAL CONNECTION DIAGRAM



Note : When not using the remote control, please connect the RC terminal to the ground side for operation.

Dimensions in inches; () Dimensions in mm.