

**PROPRIETARY NOTE**

THIS SPECIFICATION IS THE PROPERTY OF BOE HF AND SHALL NOT BE REPRODUCED OR COPIED WITHOUT THE WRITTEN PERMISSION OF BOE HF AND MUST BE RETURNED TO BOE HF UPON ITS REQUEST

SPEC. NUMBER

PRODUCT GROUP
TFT-LCD

Rev. 0

ISSUE DATE

2011.06.30

PAGE

1 OF 28

TITLE : B3 HM215WU3-500**Product Specification****Rev. 0**

HEFEI BOE OPTOELECTRONICS TECHNOLOGY



京东方
BOE

PRODUCT GROUP

REV

ISSUE DATE

TFT- LCD PRODUCT

0

2011.06.30

SPEC. NUMBER

SPEC. TITLE

PAGE

B3 HM215WU3-500 Product Specification Rev. 0

2 OF 28

REVISION HISTORY

REV.	ECN No.	DESCRIPTION OF CHANGES	DATE	PREPARED
0		Initial Release	2011.06.30	王国磊



PRODUCT GROUP

REV

ISSUE DATE

TFT- LCD PRODUCT

0

2011.06.30

SPEC. NUMBER

SPEC. TITLE

B3 HM215WU3-500 Product Specification Rev. 0

PAGE

3 OF 28

Contents

No.	Item	Page
1.0	General Description	4
2.0	Absolute Maximum Ratings	6
3.0	Electrical Specifications	7
4.0	Optical Specifications	8
5.0	Interface Connection	10
6.0	Signal Timing Specifications	14
7.0	Signal Timing Waveforms of Interface Signal	16
8.0	Input Signals, Display Colors & Gray Scale of Colors	18
9.0	Power Sequence	19
10.0	Mechanical Characteristics	20
11.0	Reliability Test	21
12.0	Handling & Cautions	22
13.0	Product Serial Number	23
14.0	Packing	24
15.0	Appendix	27



PRODUCT GROUP

REV

ISSUE DATE

TFT-LCD PRODUCT

0

2011.06.30

SPEC. NUMBER

SPEC. TITLE

PAGE

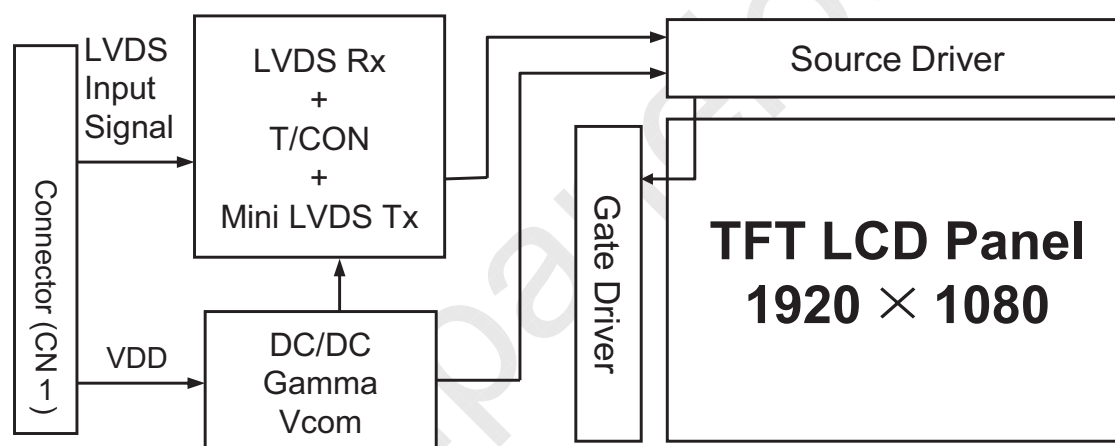
B3 HM215WU3-500 Product Specification Rev. 0

4 OF 28

1.0 GENERAL DESCRIPTION

1.1 Introduction

HM215WU3-500 is a color active matrix TFT LCD open cell using amorphous silicon TFT's (Thin Film Transistors) as an active switching devices. This module has a 21.5 inch diagonally measured active area with FHD resolutions (1920 horizontal by 1080 vertical pixel array). Each pixel is divided into RED, GREEN, BLUE dots which are arranged in vertical stripe and this module can display 16.7M colors. The TFT-LCD panel used for this module is adapted for a low reflection and higher color type.



1.2 Features

- LVDS Interface with 2 pixel / clock
- High-speed response
- 6-bit (Hi-FRC) color depth, display 16.7M colors
- High luminance and contrast ratio, low reflection
- DE (Data Enable) only
- RoHS Compliant



PRODUCT GROUP

REV

ISSUE DATE

TFT- LCD PRODUCT

0

2011.06.30

SPEC. NUMBER

SPEC. TITLE

PAGE

B3 HM215WU3-500 Product Specification Rev. 0

5 OF 28

1.3 Application

- Desktop Type of PC & Workstation Use
- Slim-Size Display for Stand-alone Monitor
- Display Terminals for Control System
- Monitors for Process Controller

1.4 General Specification

The followings are general specifications at the open cell HM215WU3-500.

<Table 1. General Specifications>

Parameter	Specification	Unit	Remarks
Active area	476.64(H) × 268.11 (V)	mm	
Number of pixels	1920(H) × 1080(V)	pixels	
Pixel pitch	0.24825(H) × 0.24825(V)	mm	
Pixel arrangement	RGB Vertical stripe		
Display colors	16.7M	colors	
Display mode	Normally White		
Weight	(555) (max.)	g	
Surface Treatment	Haze 25%, 3H		



PRODUCT GROUP

REV

ISSUE DATE

TFT- LCD PRODUCT

0

2011.06.30

SPEC. NUMBER

SPEC. TITLE

PAGE

B3 HM215WU3-500 Product Specification Rev. 0

6 OF 28

2.0 ABSOLUTE MAXIMUM RATINGS

The followings are maximum values which, if exceed, may cause faulty operation or damage to the unit. The operational and non-operational maximum voltage and current values are listed in Table 2.

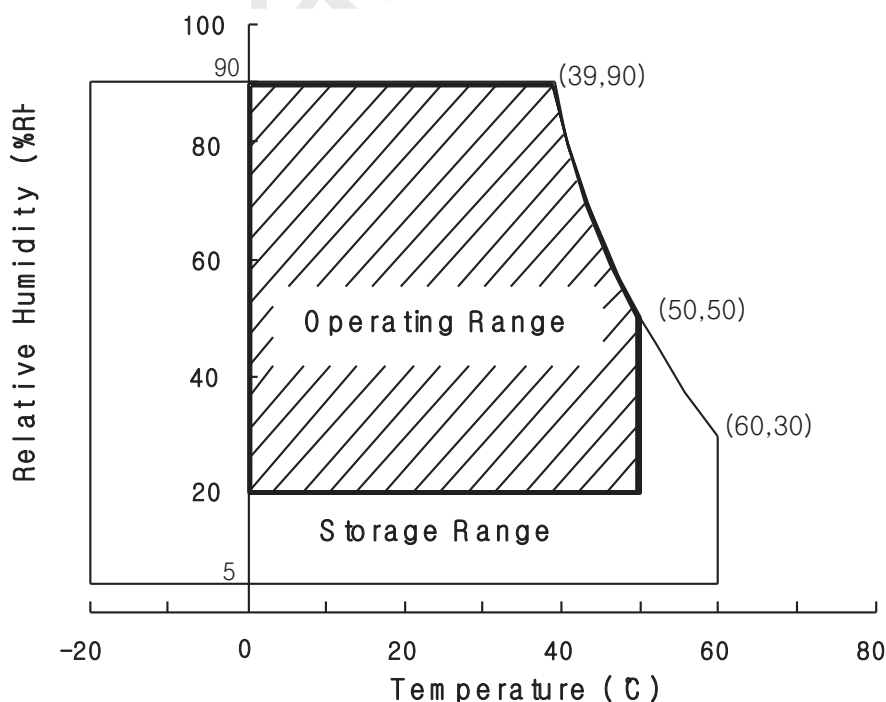
< Table 2. Absolute Maximum Ratings >

[VSS=GND=0V]

Parameter	Symbol	Min.	Max.	Unit	Remarks
Power Supply Voltage	V_{DD}	-0.5	5.5	V	Ta = 25 °C
Logic Supply Voltage	V_{IN}	VSS-0.3	$V_{DD}+0.3$	V	
Operating Temperature	T_{OP}	0	+50	°C	1)
Storage Temperature	T_{ST}	-20	+60	°C	1)

Note : 1) Temperature and relative humidity range are shown in the figure below.

Wet bulb temperature should be 39 °C max. and no condensation of water.





PRODUCT GROUP

REV

ISSUE DATE

TFT- LCD PRODUCT

0

2011.06.30

SPEC. NUMBER

SPEC. TITLE

PAGE

B3 HM215WU3-500 Product Specification Rev. 0

7 OF 28

3.0 ELECTRICAL SPECIFICATIONS

3.1 Electrical Specifications

< Table 3. Electrical specifications >

[Ta =25 ± 2 °C]

Parameter		Min.	Typ.	Max.	Unit	Remarks
Power Supply Voltage	V _{DD}	4.5	5.0	5.5	V	Note 1
Power Supply Current	I _{DD}	-	TBD	TBD	mA	
In-Rush Current	I _{RUSH}	-	TBD	TBD	A	Note 2
Permissible Input Ripple Voltage	V _{RF}	-	-	100	mV	V _{DD} = 5.0V
High Level Differential Input Threshold Voltage	V _{IH}	-	-	+100	mV	
Low Level Differential Input Threshold Voltage	V _{IL}	-100	-	-	mV	
Differential input voltage	V _{ID}	200	-	600	mV	
Differential input common mode voltage	V _{cm}	1.0	1.2	1.5		V _{IH} =100mV, V _{IL} =-100mV
Power Consumption	P _D	-	4.9	-	W	

- Notes : 1. The supply voltage is measured and specified at the interface connector of LCM.
The current draw and power consumption specified is for VDD=5.0V, Frame rate=75Hz and Clock frequency = 92.9Hz. Test Pattern of power supply current
- Typ : Color Bar pattern
 - Max : Skip Sub Pixel Pattern



- Duration of rush current is about 2 ms and rising time of VDD is 520 μs ± 20 %



PRODUCT GROUP

REV

ISSUE DATE

TFT- LCD PRODUCT

0

2011.06.30

SPEC. NUMBER

SPEC. TITLE

PAGE

B3 HM215WU3-500 Product Specification Rev. 0

8 OF 28

4.0 OPTICAL SPECIFICATION

4.1 Overview

The test of Optical specifications shall be measured in a dark room (ambient luminance ≤ 1 lux and temperature = $25 \pm 2^\circ\text{C}$) with the equipment of Luminance meter system (Goniometer system and TOPCONE BM-5) and test unit shall be located at an approximate distance 50cm from the LCD surface at a viewing angle of θ and Φ equal to 0° . We refer to $\theta_{\Phi=0}$ ($=\theta_3$) as the 3 o'clock direction (the "right"), $\theta_{\Phi=90}$ ($=\theta_{12}$) as the 12 o'clock direction ("upward"), $\theta_{\Phi=180}$ ($=\theta_9$) as the 9 o'clock direction ("left") and $\theta_{\Phi=270}$ ($=\theta_6$) as the 6 o'clock direction ("bottom"). While scanning θ and/or Φ , the center of the measuring spot on the Display surface shall stay fixed. The measurement shall be executed after 30 minutes warm-up period. VDD shall be 5.0V +/-10% at 25°C . Optimum viewing angle direction is 6 'clock.

4.2 Optical Specifications

[VDD = 5.0V, Frame rate = 60Hz, Clock = 78MHz, $I_{BL} = 240\text{mA}$, $T_a = 25 \pm 2^\circ\text{C}$]

Parameter		Symbol	Condition	Min.	Typ.	Max.	Unit	Remark
Viewing Angle range	Horizontal	Θ_3	CR > 10	35	45	-	Deg.	Note 2
		Θ_9		35	45	-	Deg.	
	Vertical	Θ_{12}		20	25	-	Deg.	
		Θ_6		35	40	-	Deg.	
Viewing Angle range	Horizontal	Θ_3	CR > 5	50	-	-	Deg.	
		Θ_9		50	-	-	Deg.	
	Vertical	Θ_{12}		30	-	-	Deg.	
		Θ_6		45	-	-	Deg.	
Luminance Contrast ratio		CR		450	600			Note 3
Cell Transmittance		Tr		-	5.95	-		Note 4
White luminance uniformity		ΔY		75	80		%	Note 5
Reproduction of color	White	W_x	$\Theta = 0^\circ$ (Center) Normal Viewing Angle	0.283	0.313	0.343		Note 6
		W_y		0.299	0.329	0.359		
	Red	R_x		0.609	0.639	0.669		
		R_y		0.312	0.342	0.372		
	Green	G_x		0.293	0.323	0.353		
		G_y		0.600	0.630	0.660		
	Blue	B_x		0.123	0.153	0.183		
		B_y		0.021	0.051	0.081		
Response Time	Rising	T_r		1.5	2.5	ms	Note 7	
	Falling	T_f		3.5	5.5	ms		
Cross Talk		CT		-	-	2.0	%	Note 8

 京东方 BOE	PRODUCT GROUP	REV	ISSUE DATE
	TFT- LCD PRODUCT	0	2011.06.30
SPEC. NUMBER	SPEC. TITLE B3 HM215WU3-500 Product Specification Rev. 0		PAGE 9 OF 28

Note :

- The value in upper table are based on BLU provided by BOEHF.
- Viewing angle is the angle at which the contrast ratio is greater than 10. The viewing are determined for the horizontal or 3, 9 o'clock direction and the vertical or 6, 12 o'clock direction with respect to the optical axis which is normal to the LCD surface.
- Contrast measurements shall be made at viewing angle of $\theta = 0^\circ$ and at the center of the LCD surface. Luminance shall be measured with all pixels in the view field set first to white, then to the dark (black) state. (See FIGURE 1 shown in Appendix) Luminance Contrast Ratio (CR) is defined mathematically.

$$CR = \frac{\text{Luminance when displaying a white raster}}{\text{Luminance when displaying a black raster}}$$

- Luminance of LCD module shall be made without signal input. Cell transmittance is defined mathematically, BLU provided by BOEHF.

$$\text{Transmittance} = \frac{\text{Luminance of LCD Module}}{\text{Luminance of BLU}}$$

- The White luminance uniformity on LCD surface is then expressed as :
 $\Delta Y = (\text{Minimum Luminance of 9points} / \text{Maximum Luminance of 9points}) * 100$
 (See FIGURE 2 shown in Appendix).
- The color chromaticity coordinates specified in Table 4. shall be calculated from the spectral data measured with all pixels first in red, green, blue and white. Measurements shall be made at the center of the panel with BLU provided by BOEHF.
- The electro-optical response time measurements shall be made as FIGURE 3 shown in Appendix by switching the "data" input signal ON and OFF. The times needed for the luminance to change from 10% to 90% is Td, and 90% to 10% is Tr.
- Cross-Talk of one area of the LCD surface by another shall be measured by comparing the luminance (Y_A) of a 25mm diameter area, with all display pixels set to a gray level, to the luminance (Y_B) of that same area when any adjacent area is driven dark. (See FIGURE 4 shown in Appendix).



PRODUCT GROUP

REV

ISSUE DATE

TFT- LCD PRODUCT

0

2011.06.30

SPEC. NUMBER

SPEC. TITLE

PAGE

B3 HM215WU3-500 Product Specification Rev. 0

10 OF 28

5.0 INTERFACE CONNECTION.

5.1 Electrical Interface Connection

- CN1 Open Cell Side Connector : UJU IS100-L300-C23 or Equivalent
User Side Connector : JAE FI-X30H or Equivalent

Pin No	Symbol	Function	Remark
1	RX00-	Negative Transmission data of Pixel 0 (ODD)	
2	RX00+	Positive Transmission data of Pixel 0 (ODD)	
3	RX01-	Negative Transmission data of Pixel 1 (ODD)	
4	RX01+	Positive Transmission data of Pixel 1 (ODD)	
5	RX02-	Negative Transmission data of Pixel 2 (ODD)	
6	RX02+	Positive Transmission data of Pixel 2 (ODD)	
7	GND	Power Ground	
8	RXOC-	Negative Transmission Clock (ODD)	
9	RXOC+	Positive Transmission Clock (ODD)	
10	RX03-	Negative Transmission data of Pixel 3 (ODD)	
11	RX03+	Positive Transmission data of Pixel 3 (ODD)	
12	RXE0-	Negative Transmission data of Pixel 0 (EVEN)	
13	RXE0+	Positive Transmission data of Pixel 0 (EVEN)	
14	GND	Power Ground	
15	RXE1-	Negative Transmission data of Pixel 1 (EVEN)	
16	RXE1+	Positive Transmission data of Pixel 1 (EVEN)	
17	GND	Power Ground	
18	RXE2-	Negative Transmission data of Pixel 2 (EVEN)	
19	RXE2+	Positive Transmission data of Pixel 2 (EVEN)	
20	RXEC-	Negative Transmission Clock (EVEN)	
21	RXEC+	Positive Transmission Clock (EVEN)	
22	RXE3-	Negative Transmission data of Pixel 3 (EVEN)	
23	RXE3+	Positive Transmission data of Pixel 3 (EVEN)	
24	GND	Power Ground	Note1
25	NC	Not connection, this pin should be open	
26	NC	Not connection, this pin should be open	
27	NC	Not connection	
28	VDD1	Power Supply: +5V	
29	VDD2		
30	VDD3		

Note 1 : This pin should be connected with GND



PRODUCT GROUP

REV

ISSUE DATE

TFT-LCD PRODUCT

0

2011.06.30

SPEC. NUMBER

SPEC. TITLE

PAGE

B3 HM215WU3-500 Product Specification Rev. 0

11 OF 28

5.2 LVDS Interface (Tx; THC63LVDF83A or Equivalent)

5.2.1 ODD LVDS Interface

	Input Signal	Transmitter		Interface		HM215WU1-500 (CN11)	Remark
		Pin No.	Pin No.	System (Tx)	TFT-LCD (Rx)	Pin No.	
O D D L V D S	OR0	51	48 47	OUT0- OUT0+	RXO0- RXO0+	1 2	
	OR1	52					
	OR2	54					
	OR3	55					
	OR4	56					
	OR5	3					
	OG0	4	46 45	OUT1- OUT1+	RXO1- RXO1+	3 4	
	OG1	6					
	OG2	7					
	OG3	11					
	OG4	12					
	OG5	14					
	OB0	15	42 41	OUT2- OUT2+	RXO2- RXO2+	5 6	
	OB1	19					
	OB2	20					
	OB3	22					
	OB4	23					
	OB5	24					
	Hsync	27	40 39	CLK OUT- CLK OUT+	RXO CLK- RXO CLK+	8 9	
	Vsync	28					
	DE	30	38 37	OUT3- OUT3+	RXO3- RXO3+	10 11	
MCLK	31						
OR6	50						
OR7	2						
OG6	8						
OG7	10						
OB6	16						
OB7	18						
RSVD	25						



PRODUCT GROUP

REV

ISSUE DATE

TFT-LCD PRODUCT

0

2011.06.30

SPEC. NUMBER

SPEC. TITLE

PAGE

B3 HM215WU3-500 Product Specification Rev. 0

12 OF 28

5.2.2 EVEN LVDS Interface

	Input Signal	Transmitter		Interface		HM215WU1-500 (CN11)	Remark
		Pin No.	Pin No.	System (Tx)	TFT-LCD (Rx)	Pin No.	
E V E N L V D S	ER0	51	48 47	OUT0- OUT0+	RXE0- RXE0+	12 13	
	ER1	52					
	ER2	54					
	ER3	55					
	ER4	56					
	ER5	3					
	EG0	4	46 45	OUT1- OUT1+	RXE1- RXE1+	15 16	
	EG1	6					
	EG2	7					
	EG3	11					
	EG4	12					
	EG5	14					
	EB0	15	42 41	OUT2- OUT2+	RXE2- RXE2+	18 19	
	EB1	19					
	EB2	20					
	EB3	22					
	EB4	23					
	EB5	24					
	Hsync	27	38 37	OUT3- OUT3+	RXE3- RXE3+	22 23	
	Vsync	28					
	DE	30					
MCLK	31	40 39	CLK OUT- CLK OUT+	RXE CLK- RXE CLK+	20 21		
ER6	50	38 37	OUT3- OUT3+	RXE3- RXE3+	22 23		
ER7	2						
EG6	8						
EG7	10						
EB6	16						
EB7	18						
RSVD	25						



PRODUCT GROUP

REV

ISSUE DATE

TFT-LCD PRODUCT

0

2011.06.30

SPEC. NUMBER

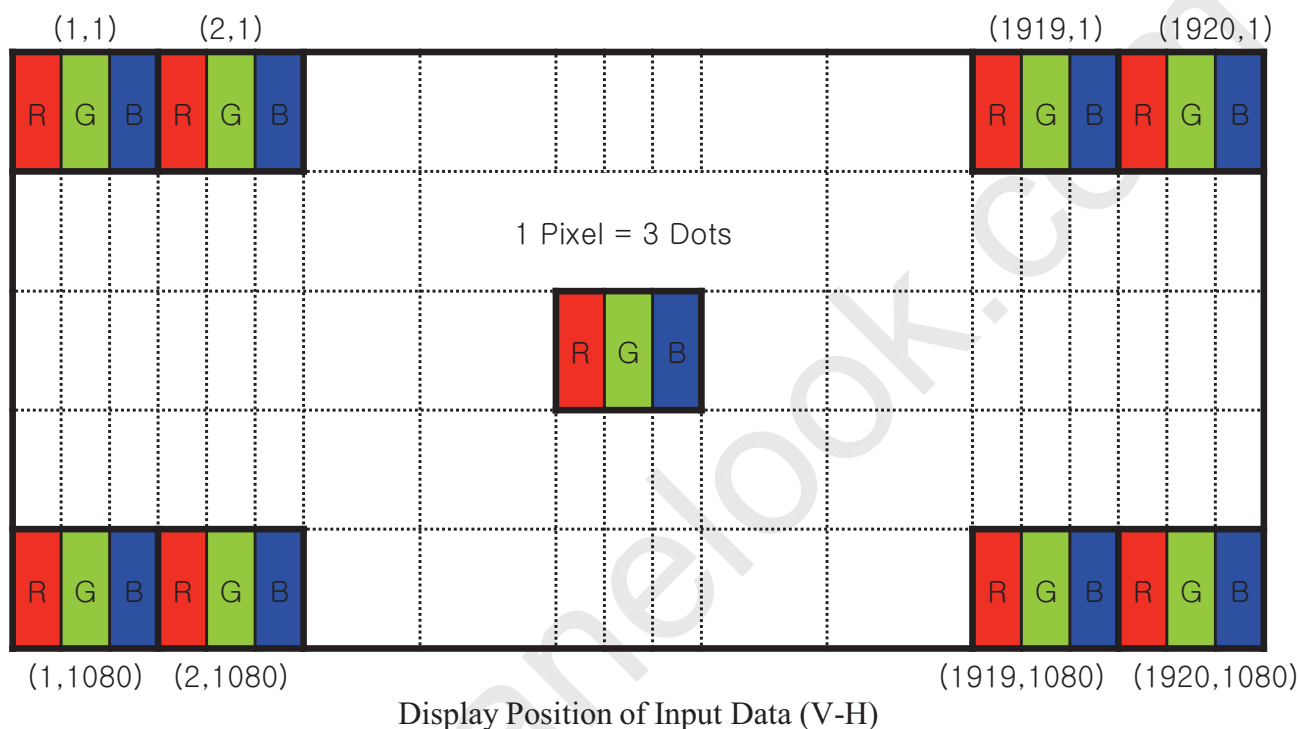
SPEC. TITLE

PAGE

B3 HM215WU3-500 Product Specification Rev. 0

13 OF 28

5.3 Data Input Format





京东方
BOE

PRODUCT GROUP

REV

ISSUE DATE

TFT- LCD PRODUCT

0

2011.06.30

SPEC. NUMBER

SPEC. TITLE

PAGE

B3 HM215WU3-500 Product Specification Rev. 0

14 OF 28

6.0 SIGNAL TIMING SPECIFICATION

6.1 The HM215WU3-500 is operated by the DE only.

Item		Symbols	Min	Typ	Max	Unit
Clock	Frequency	1/Tc	61.93	74.32	92.90	MHz
	High Time	Tch	-	4/7 Tc	-	
	Low Time	Tcl	-	3/7 Tc	-	
Frame Period		Tv	1091	1125	1149	lines
			50	60	70	Hz
			20	16.67	13.33	ms
Vertical Display Period		Tvd	-	1080	-	lines
One line Scanning Period		Th	1060	1100	1200	clocks
Horizontal Display Period		Thd	-	960	-	clocks



PRODUCT GROUP

REV

ISSUE DATE

TFT-LCD PRODUCT

0

2011.06.30

SPEC. NUMBER

SPEC. TITLE

PAGE

B3 HM215WU3-500 Product Specification Rev. 0

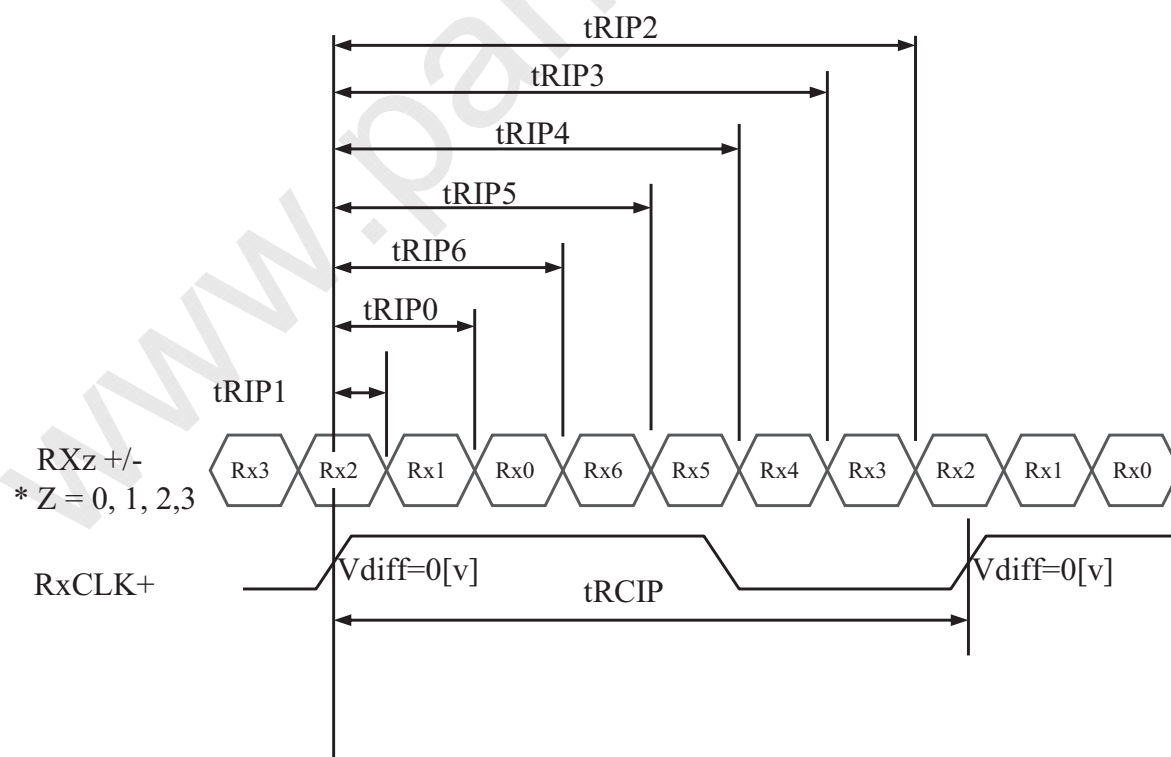
15 OF 28

6.2 LVDS Rx Interface Timing Parameter

The specification of the LVDS Rx interface timing parameter is shown in Table 4.

<Table 4. LVDS Rx Interface Timing Specification>

Item	Symbol	Min	Typ	Max	Unit	Remark
CLKIN Period	tRCIP	10.76	13.46	16.15	nsec	
Input Data 0	tRIP1	-0.4	0.0	+0.4	nsec	
Input Data 1	tRIP0	tRCIP/7-0.4	tRCIP/7	tRCIP/7+0.4	nsec	
Input Data 2	tRIP6	2 × tRCIP/7-0.4	2 × tRCIP/7	2 × tRCIP/7+0.4	nsec	
Input Data 3	tRIP5	3 × tRCIP/7-0.4	3 × tRCIP/7	3 × tRCIP/7+0.4	nsec	
Input Data 4	tRIP4	4 × tRCIP/7-0.4	4 × tRCIP/7	4 × tRCIP/7+0.4	nsec	
Input Data 5	tRIP3	5 × tRCIP/7-0.4	5 × tRCIP/7	5 × tRCIP/7+0.4	nsec	
Input Data 6	tRIP2	6 × tRCIP/7-0.4	6 × tRCIP/7	6 × tRCIP/7+0.4	nsec	



* Vdiff = (RXz+)-(RXz-),..., (RXCLK+)-(RXCLK-)



京东方
BOE

PRODUCT GROUP

REV

ISSUE DATE

TFT-LCD PRODUCT

0

2011.06.30

SPEC. NUMBER

SPEC. TITLE

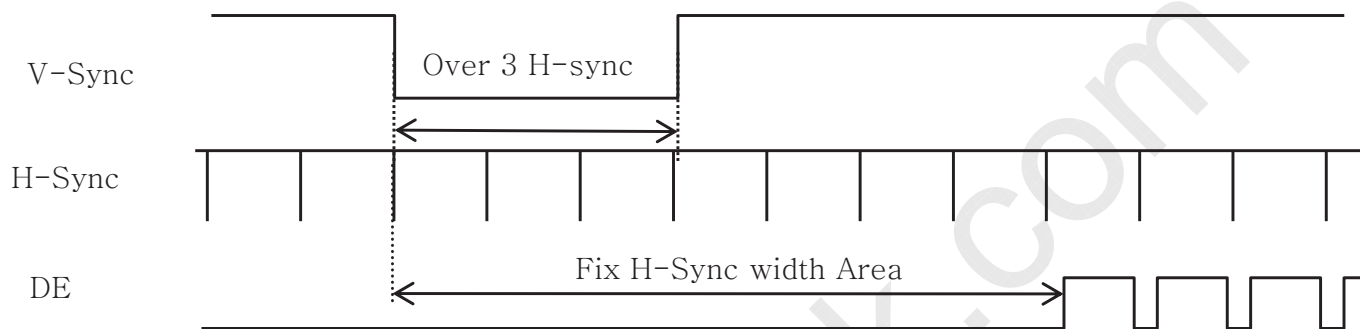
PAGE

B3 HM215WU3-500 Product Specification Rev. 0

16 OF 28

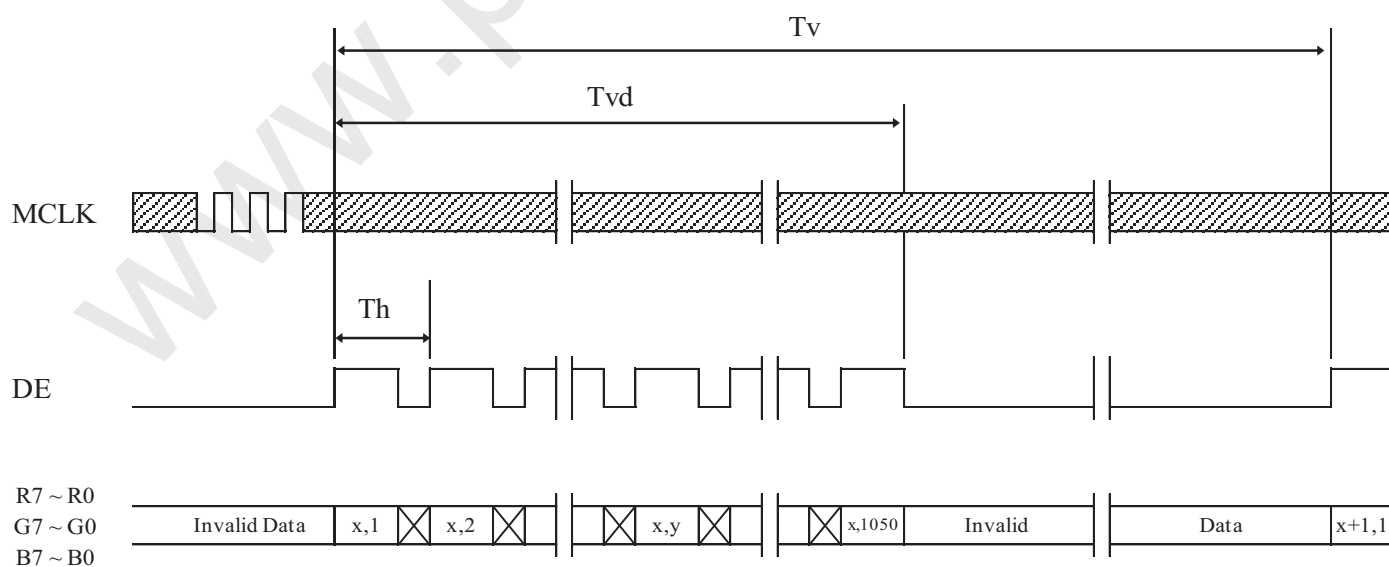
7.0 SIGNAL TIMING WAVEFORMS OF INTERFACE SIGNAL

7.1 Sync Timing Waveforms



- 1) Need over 3 H-sync during V-Sync Low
- 2) Fix H-Sync width from V-Sync falling edge to first rising edge

7.2 Vertical Timing Waveforms





PRODUCT GROUP

REV

ISSUE DATE

TFT-LCD PRODUCT

0

2011.06.30

SPEC. NUMBER

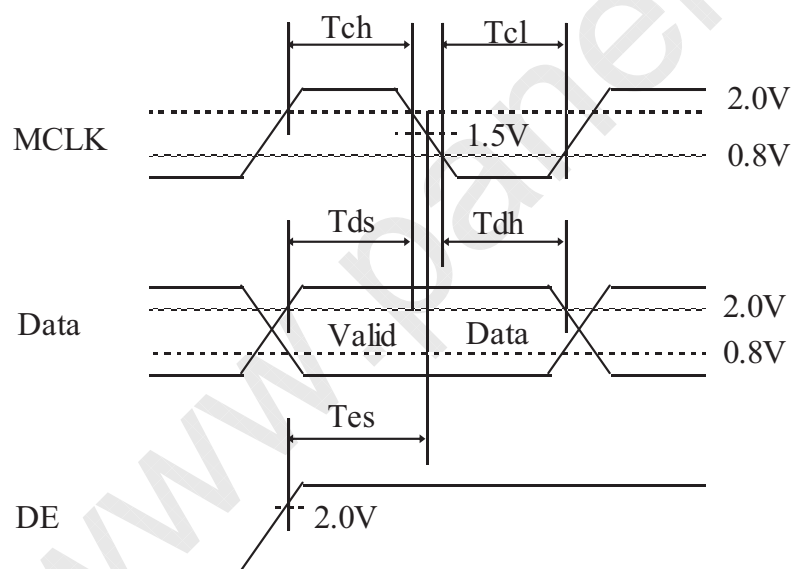
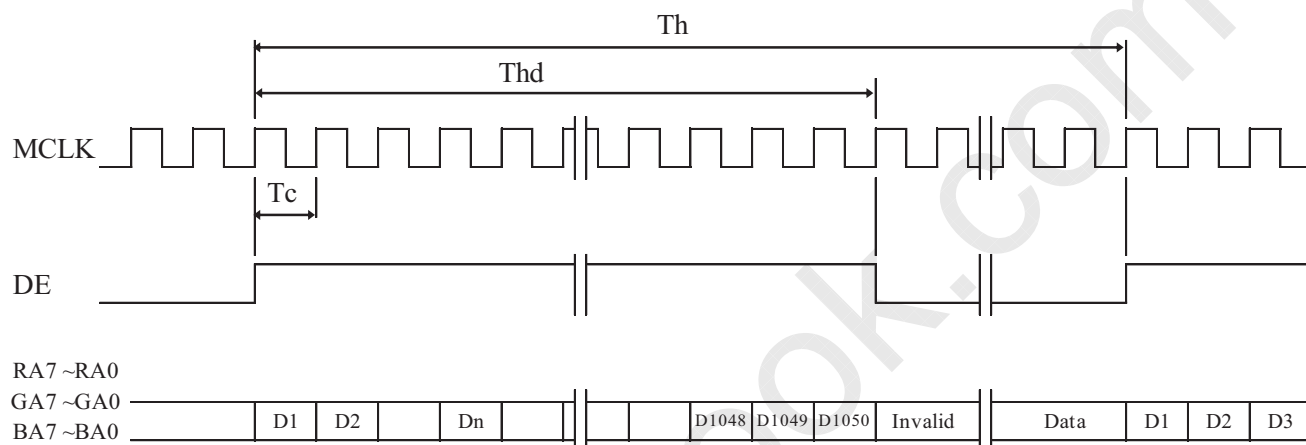
SPEC. TITLE

PAGE

B3 HM215WU3-500 Product Specification Rev. 0

17 OF 28

7.3 Horizontal Timing Waveforms





PRODUCT GROUP

REV

ISSUE DATE

TFT- LCD PRODUCT

0

2011.06.30

SPEC. NUMBER

SPEC. TITLE

PAGE

B3 HM215WU3-500 Product Specification Rev. 0

18 OF 28

8.0 INPUT SIGNALS, BASIC DISPLAY COLORS & GRAY SCALE OF COLORS

Color & Gray Scale		RED DATA								GREEN DATA								BLUE DATA							
		R7	R6	R5	R4	R3	R2	R1	R0	G7	G6	G5	G4	G3	G2	G1	G0	B7	B6	B5	B4	B3	B2	B1	B0
Basic Colors	Black	0	0	0	0	0	0	0	0	0	0	0	0	0	0	0	0	0	0	0	0	0	0	0	0
	Blue	0	0	0	0	0	0	0	0	0	0	0	0	0	0	0	0	1	1	1	1	1	1	1	1
	Green	0	0	0	0	0	0	0	0	1	1	1	1	1	1	1	1	0	0	0	0	0	0	0	0
	Cyan	0	0	0	0	0	0	0	0	1	1	1	1	1	1	1	1	1	1	1	1	1	1	1	1
	Red	1	1	1	1	1	1	1	1	0	0	0	0	0	0	0	0	0	0	0	0	0	0	0	0
	Magenta	1	1	1	1	1	1	1	1	0	0	0	0	0	0	0	0	1	1	1	1	1	1	1	1
	Yellow	1	1	1	1	1	1	1	1	1	1	1	1	1	1	1	1	0	0	0	0	0	0	0	0
	White	1	1	1	1	1	1	1	1	1	1	1	1	1	1	1	1	1	1	1	1	1	1	1	1
Gray Scale of RED	Black	0	0	0	0	0	0	0	0	0	0	0	0	0	0	0	0	0	0	0	0	0	0	0	0
	△	0	0	0	0	0	0	0	1	0	0	0	0	0	0	0	0	0	0	0	0	0	0	0	0
	Darker	0	0	0	0	0	0	1	0	0	0	0	0	0	0	0	0	0	0	0	0	0	0	0	0
	△	↑								↑								↑							
	▽	↓								↓								↓							
	Brighter	1	1	1	1	1	1	0	1	0	0	0	0	0	0	0	0	0	0	0	0	0	0	0	0
	▽	1	1	1	1	1	1	0	0	0	0	0	0	0	0	0	0	0	0	0	0	0	0	0	0
	Red	1	1	1	1	1	1	1	1	0	0	0	0	0	0	0	0	0	0	0	0	0	0	0	0
Gray Scale of GREEN	Black	0	0	0	0	0	0	0	0	0	0	0	0	0	0	0	0	0	0	0	0	0	0	0	0
	△	0	0	0	0	0	0	0	0	0	0	0	0	0	0	0	1	0	0	0	0	0	0	0	0
	Darker	0	0	0	0	0	0	0	0	0	0	0	0	0	0	1	0	0	0	0	0	0	0	0	0
	△	↑								↑								↑							
	▽	↓								↓								↓							
	Brighter	0	0	0	0	0	0	0	0	1	1	1	1	1	1	0	1	0	0	0	0	0	0	0	0
	▽	0	0	0	0	0	0	0	0	1	1	1	1	1	1	0	0	0	0	0	0	0	0	0	0
	Green	0	0	0	0	0	0	0	0	1	1	1	1	1	1	1	1	0	0	0	0	0	0	0	0
Gray Scale of BLUE	Black	0	0	0	0	0	0	0	0	0	0	0	0	0	0	0	0	0	0	0	0	0	0	0	0
	△	0	0	0	0	0	0	0	0	0	0	0	0	0	0	0	0	0	0	0	0	0	0	0	1
	Darker	0	0	0	0	0	0	0	0	0	0	0	0	0	0	0	0	0	0	0	0	0	0	1	0
	△	↑								↑								↑							
	▽	↓								↓								↓							
	Brighter	0	0	0	0	0	0	0	0	0	0	0	0	0	0	0	0	1	1	1	1	1	1	0	1
	▽	0	0	0	0	0	0	0	0	0	0	0	0	0	0	0	0	1	1	1	1	1	1	1	0
	Blue	0	0	0	0	0	0	0	0	0	0	0	0	0	0	0	0	1	1	1	1	1	1	1	1
Gray Scale of WHITE	Black	0	0	0	0	0	0	0	0	0	0	0	0	0	0	0	0	0	0	0	0	0	0	0	0
	△	0	0	0	0	0	0	0	1	0	0	0	0	0	0	0	1	0	0	0	0	0	0	0	1
	Darker	0	0	0	0	0	0	1	0	0	0	0	0	0	0	1	0	0	0	0	0	0	0	1	0
	△	↑								↑								↑							
	▽	↓								↓								↓							
	Brighter	1	1	1	1	1	1	0	1	1	1	1	1	1	1	0	1	1	1	1	1	1	1	0	1
	▽	1	1	1	1	1	1	0	1	1	1	1	1	1	1	0	1	1	1	1	1	1	1	1	0
	White	1	1	1	1	1	1	1	1	1	1	1	1	1	1	1	1	1	1	1	1	1	1	1	1



PRODUCT GROUP

REV

ISSUE DATE

TFT- LCD PRODUCT

0

2011.06.30

SPEC. NUMBER

SPEC. TITLE

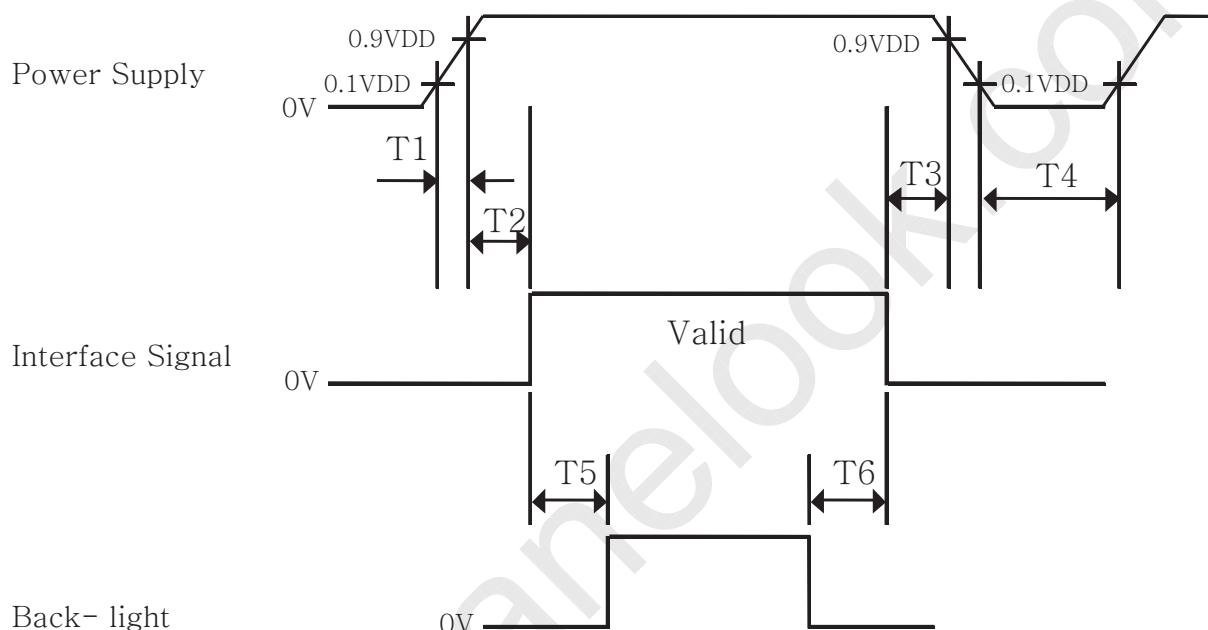
PAGE

B3 HM215WU3-500 Product Specification Rev. 0

19 OF 28

9.0 POWER SEQUENCE

To prevent a latch-up or DC operation of the LCD Open Cell, the power on/off sequence shall be as shown in below



- $0.5 \text{ ms} \leq T1 \leq 10 \text{ ms}$
- $0 \leq T2 \leq 50 \text{ ms}$
- $0 \leq T3 \leq 50 \text{ ms}$
- $1 \text{ sec} \leq T4$
- $200 \text{ ms} \leq T5$
- $200 \text{ ms} \leq T6$

Notes:

1. When the power supply VDD is 0V, keep the level of input signals on the low or keep high impedance.
2. Do not keep the interface signal high impedance when power is on.
3. Back Light must be turn on after power for logic and interface signal are valid.

京东方
BOE

PRODUCT GROUP

REV

ISSUE DATE

TFT- LCD PRODUCT

0

2011.06.30

SPEC. NUMBER

SPEC. TITLE

PAGE

B3 HM215WU3-500 Product Specification Rev. 0

20 OF 28

10.0 MECHANICAL CHARACTERISTICS**10.1 Dimensional Requirements**

FIGURE 6 (located in Appendix) shows mechanical outlines for the model HM215WU3-500. Other parameters are shown in Table 5.

<Table 5. Dimensional Parameters>

Parameter	Specification	Unit
Weight	(555) (max.)	gram
Active area	476.64(H) × 268.11 (V)	mm
Pixel pitch	0.24825(H) × 0.24825(V)	mm
Number of pixels	1920(H) × 1080(V) (1 pixel = R + G + B dots)	pixels

10.2 Anti-Glare and Polarizer Hardness.

The surface of the LCD has an anti-glare coating to minimize reflection and a coating to reduce scratching.



PRODUCT GROUP

REV

ISSUE DATE

TFT- LCD PRODUCT

0

2011.06.30

SPEC. NUMBER

SPEC. TITLE

PAGE

B3 HM215WU3-500 Product Specification Rev. 0

21 OF 28

11.0 RELIABILITY TEST

The Reliability test items and its conditions are shown in below.

<Table 6. Reliability Test Parameters >

No	Test Items	Conditions		
1	High temperature storage test	Ta = 60 °C, 240 hrs		Note 1
2	Low temperature storage test	Ta = -20 °C, 240 hrs		
3	High temperature & high humidity (operation test)	Ta = 50 °C, 80%RH, 240hrs		
4	High temperature operation test	Ta = 50 °C, 240hrs		
5	Low temperature operation test	Ta = 0 °C, 240hrs		
6	Thermal shock	Ta = -20 °C ↔ 60 °C (0.5 hr), 100 cycle		
7	Electro-static discharge test (non-operating)	Air: 150 pF, 330Ω, 15 KV		
		Contact: 150 pF, 330Ω, 8 KV		
8	Vibration test (non-operating)	Frequency	10 ~ 300 Hz, Sweep rate 30 min	
		Gravity / AMP	1.5 G	
		Period	±X, ±Y, ±Z 30 min	
9	Packing Vibration Test	1.47Grms, 1~200Hz, Random +Z 1hr		Note 2
10	Drop Test	1Face Height: JIS-Z-0200 Level 1		

Notes:

1. The tests are done with LCD modules. (Use BOEHF BLU)
2. The test is done with a package (21pcs open cell / 1 Box) shown in section 14.



京东方
BOE

PRODUCT GROUP

REV

ISSUE DATE

TFT- LCD PRODUCT

0

2011.06.30

SPEC. NUMBER

SPEC. TITLE

PAGE

B3 HM215WU3-500 Product Specification Rev. 0

22 OF 28

12.0 HANDLING & CAUTIONS

- (1) Cautions when taking out the open cell
 - Pick the pouch only, when taking out open cell from a shipping package.
- (2) Cautions for handling the open cell
 - As the electrostatic discharges may break the LCD open cell, handle the LCD open cell with care. Peel a protection sheet off from the LCD panel surface as slowly as possible.
 - As the LCD panel is made from fragile glass material, impulse and pressure to the LCD module should be avoided.
 - As the surface of the polarizer is very soft and easily scratched, use a soft dry cloth without chemicals for cleaning.
 - Do not pull the interface connector in or out while the LCD open cell is operating.
 - Handle connectors and cables with care.
- (3) Cautions for the operation
 - When the open cell is operating, do not lose CLK, ENAB signals. If any one of these signals is lost, the LCD panel would be damaged.
 - Obey the supply voltage sequence. If wrong sequence is applied, the open cell would be damaged.
- (4) Cautions for the atmosphere
 - Dew drop atmosphere should be avoided.
 - Do not store and/or operate the LCD open cell in a high temperature and/or humidity atmosphere. Storage in an electro-conductive polymer packing pouch and under relatively low temperature atmosphere is recommended.
- (5) Cautions for the open cell characteristics
 - Do not apply fixed pattern data signal to the LCD open cell at product aging.
 - Applying fixed pattern for a long time may cause image sticking.
- (6) Other cautions
 - Do not re-adjust variable resistor or switch etc.
 - When returning the open cell for repair or etc., Please pack the open cell not to be broken. We recommend to use the original shipping packages.

 京东方 BOE	PRODUCT GROUP	REV	ISSUE DATE
	TFT- LCD PRODUCT	0	2011.06.30
SPEC. NUMBER	SPEC. TITLE B3 HM215WU3-500 Product Specification Rev. 0		PAGE 23 OF 28

13.0 PRODUCT SERIAL NUMBER



Label Size: 80mm (L) x 40 mm (W)



Digit Code	1	2	3	4	5	6	7	8	9	10	11	12	13	14	15	16	17
Code	S	L	S	3	0	9	3	5	9	4	2	0	0	0	1	D	B
Description	Model Code /GBN		Grade	Line	Year	Month	Model Extension Code (Last 4 Digits Of FG COD)				Serial No Hex-Decimal 00000-FFFFFF						

Line	
Code	Description
3	BOEHF

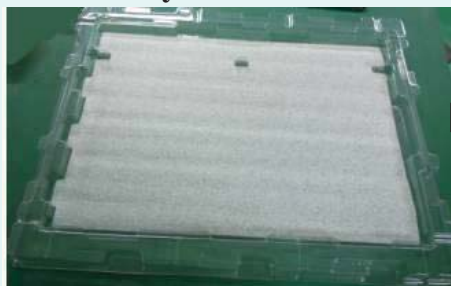
Month	
Code	Description
1	1月
2	2月
...	...
A	10月
B	11月
C	12月

 京东方 BOE	PRODUCT GROUP	REV	ISSUE DATE
	TFT- LCD PRODUCT	0	2011.06.30
SPEC. NUMBER	SPEC. TITLE	PAGE	
	B3 HM215WU3-500 Product Specification Rev. 0	24 OF 28	

14.0 Packing

14.1 Packing Order

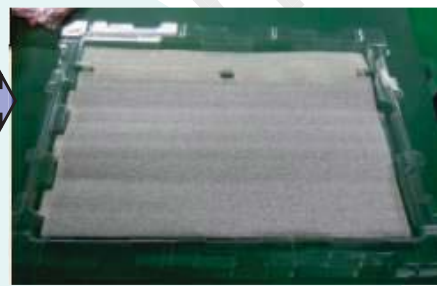
- First put one PE cushion in the tray



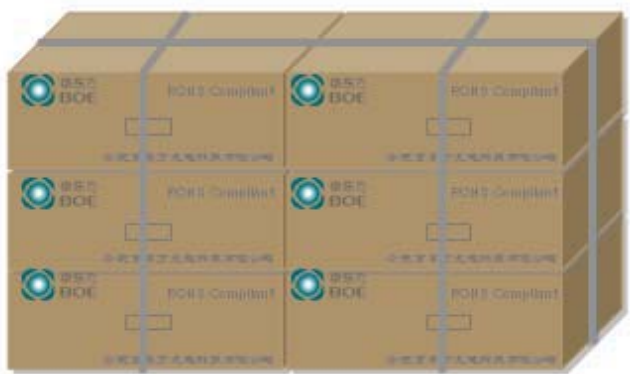
- Then put one open cell on PE cushion



- One PE cushion again, ... ,
Totally 3 pcs open cell and 4 pcs PE cushion in one tray



- One pallet contains 12 boxes, that is 252 pcs open cell



- Totally 8 tray (one empty tray on the top, 21pcs open cell) in PE bag



- Tape sealing (21 pcs open cell in one box)



- Top cover



Attention:

1. Open cell packing in clean room;
2. Operators should take open cell carefully, especially COF;
3. 21pcs open cell must be filled in one paper box;
4. Packing flow should be strictly followed;
5. Open cell is fragile materials, please pay attention both in packing and transportation;



PRODUCT GROUP

REV

ISSUE DATE

TFT- LCD PRODUCT

0

2011.06.30

SPEC. NUMBER

SPEC. TITLE

PAGE

B3 HM215WU3-500 Product Specification Rev. 0

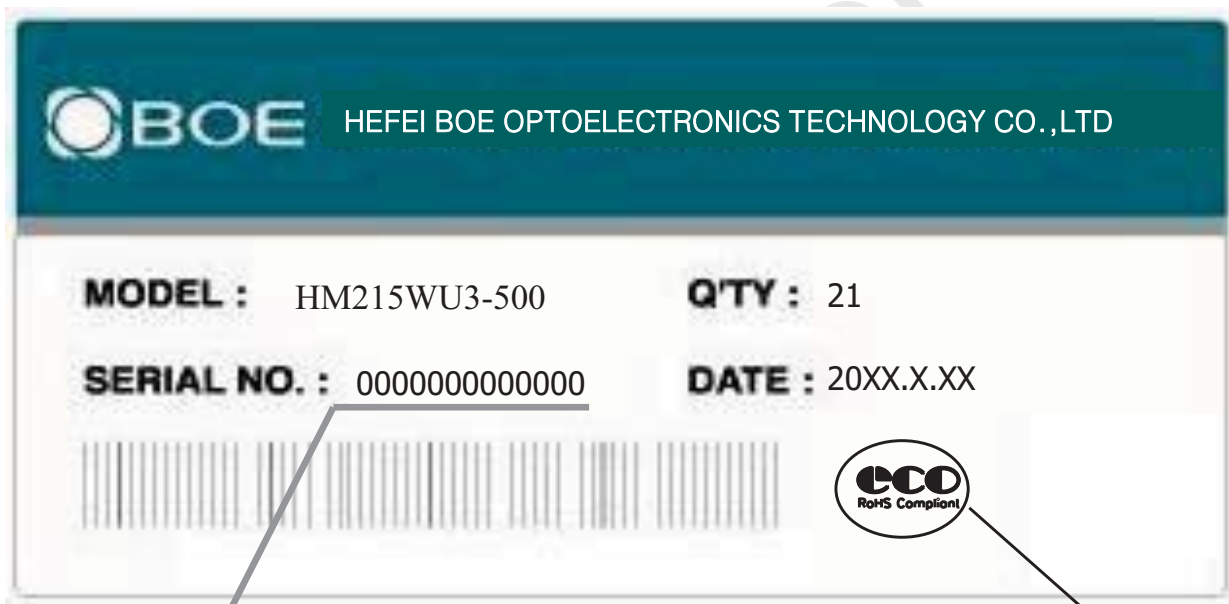
25 OF 28

14.2 Packing Note

- Box Dimension : 628mm(W) × 492mm(L) × 230mm(H)
- Package Quantity in one Box : 21pcs

14.3 Box label

- Label Size : 108 mm (L) × 56 mm (W)
- Contents
Open cell : HM215WU3-500
Q`ty : 21
Serial No. : Box Serial No. See following picture for detail description.
Date : Packing Date
FG Code : FG Code of Product



RoHS Mark

Digit	1	2	3	4	5	6	7	8	9	10	11	12	13
Code	S	L	S	3	0	9	3	D	0	0	0	6	8
Description	Products GBN		Grade	Line	Year		Month	Revision Code					

 京东方 BOE	PRODUCT GROUP	REV	ISSUE DATE
	TFT-LCD PRODUCT	0	2011.06.30
SPEC. NUMBER	SPEC. TITLE B3 HM215WU3-500 Product Specification Rev. 0		PAGE 26 OF 28

15.0 APPENDIX

Figure 1. Measurement Set Up

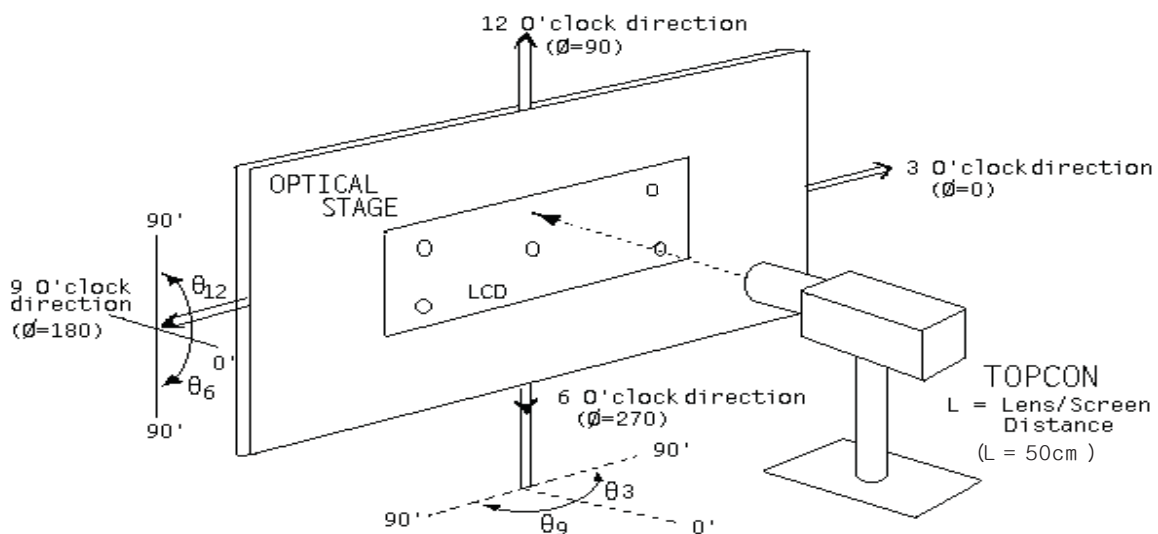
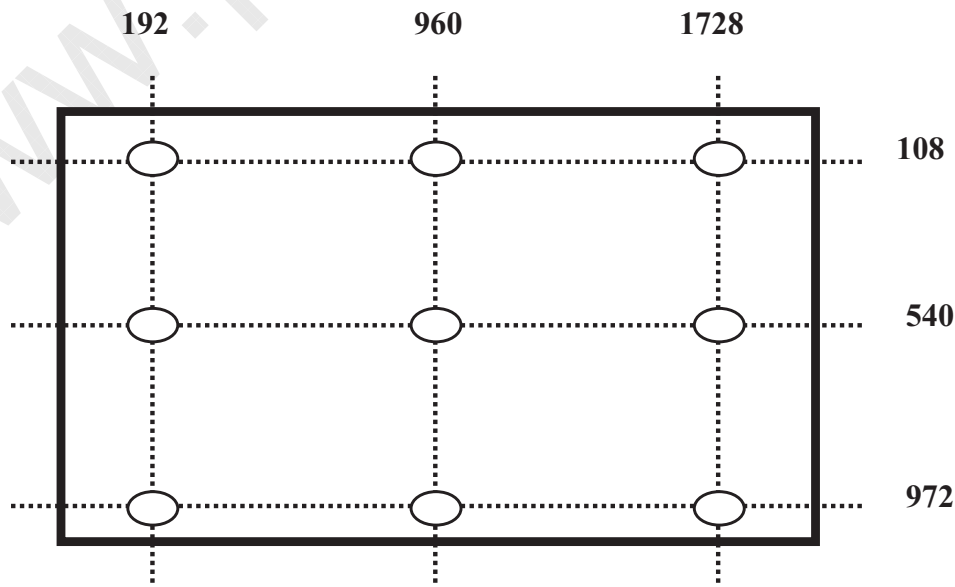


Figure 2. White Luminance and Uniformity Measurement Locations (9 points)



京东方 BOE	PRODUCT GROUP	REV	ISSUE DATE
	TFT-LCD PRODUCT	0	2011.06.30
SPEC. NUMBER	SPEC. TITLE B3 HM215WU3-500 Product Specification Rev. 0	PAGE 27 OF 28	

Figure 3. Response Time Testing

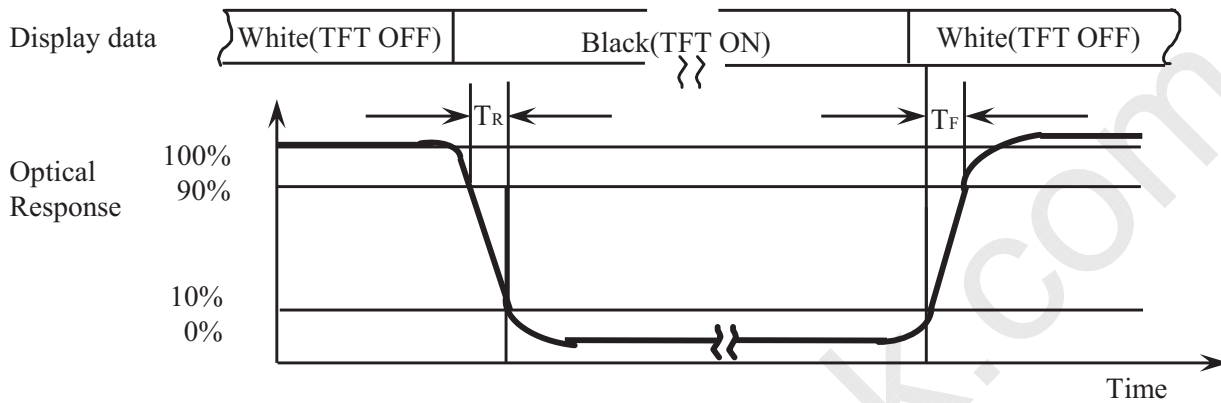
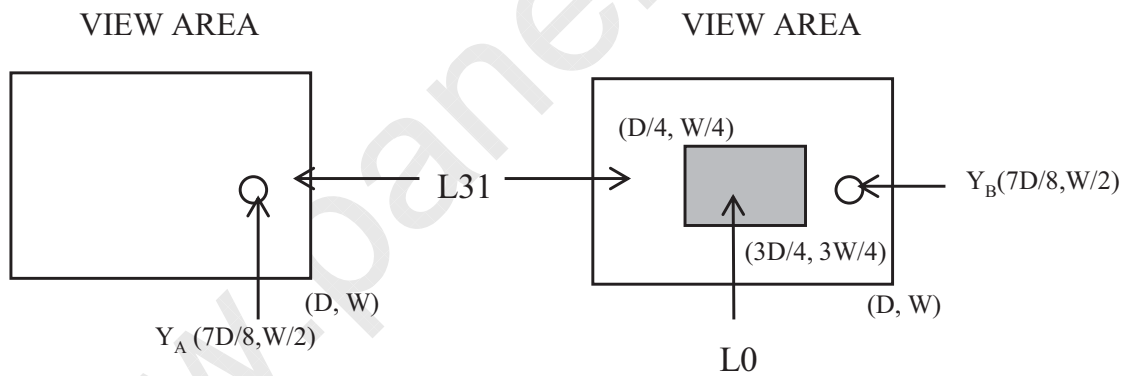


Figure 4. Cross Modulation Test Description



$$\text{Cross-Talk (\%)} = \left| \frac{Y_B - Y_A}{Y_A} \right| \times 100$$

Where: Y_A = Initial luminance of measured area (cd/m^2)

Y_B = Subsequent luminance of measured area (cd/m^2)

The location measured will be exactly the same in both patterns



PRODUCT GROUP

REV

ISSUE DATE

TFT- LCD PRODUCT

0

2011.06.30

SPEC. NUMBER

SPEC. TITLE

PAGE

B3 HM215WU3-500 Product Specification Rev. 0

28 OF 28

Figure 5. Open Cell Outline Dimensions

