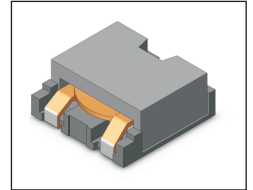


# SMT Power Inductor

## HMU1342 Type

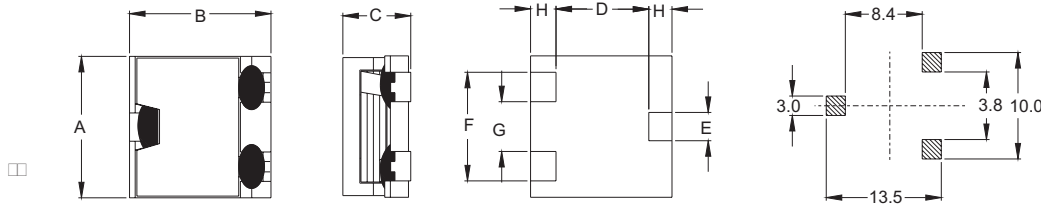
### Features

- RoHS compliant.
- Low profile, SMD type.
- High current.
- Magnetic shielded.
- High energy storage and low DCR.
- Provided with embossed carrier tape packing.
- Ideal for power source circuits, DC-DC converter, DC-AC inverters inductor applications.
- In addition to the standard versions shown here, customized inductors are available to meet your exact requirements.



### Mechanical Dimension :

#### RECOMMENDED PAD PATTERNS



UNIT : mm/inch  
 A = 12.60±0.4 / 0.496±0.016  
 B = 12.70±0.3 / 0.500±0.012  
 C = 4.20 / 0.165 Max.  
 D = 8.95 / 0.352  
 E = 2.50 / 0.098  
 F = 9.50 / 0.374  
 G = 4.30 / 0.169  
 H = 1.90 / 0.075

### Electrical Characteristics : 25°C, 100KHz, 1V

PART NO.	L <sup>1</sup> (uH)	DCR (mΩ) MAX	I <sub>sat</sub> <sup>2</sup> (A dc)	I <sub>rms</sub> <sup>3</sup> (A dc)
HMU1342-R35	0.35	1.5	32.0	24.0
HMU1342-0R5	0.50	1.5	24.0	24.0
HMU1342-0R8	0.80	4.5	22.0	18.0
HMU1342-1R1	1.10	4.5	15.0	18.0
HMU1342-1R4	1.40	4.5	12.8	18.0
HMU1342-1R9	1.90	4.5	9.0	18.0
HMU1342-2R2	2.20	11.0	12.3	10.0
HMU1342-3R0	3.00	11.0	9.8	10.0
HMU1342-4R7	4.70	21.0	8.2	7.0
HMU1342-5R6	5.60	21.0	7.6	7.0
HMU1342-6R8	6.80	21.0	5.8	7.0
HMU1342-7R7	7.70	21.0	4.8	7.0

1. Tolerance of inductance is ± 20%.
2. I<sub>sat</sub> is the DC current which cause the inductance drop approximately 20% of is nominal inductance without current.
3. I<sub>rms</sub> is the DC current which cause the surface temperature of the part increase less than 45°C.
4. Operating temperature : -20°C to 105°C ( including self-temperature rise ).



**DELTA ELECTRONICS, INC.**

(TAOYUAN PLANT CPBG) 252, SAN YING ROAD, KUEISAN INDUSTRIAL ZONE, TAOYUAN SHIEN, 333, TAIWAN, R.O.C.

TEL: 886-3-3591968; FAX: 886-3-3591991

<http://www.deltaww.com>