

HP - 304

The HP - 304 is a high - output, high - speed silicon photodiode mounted in a clear side - viewing package.

FEATURES

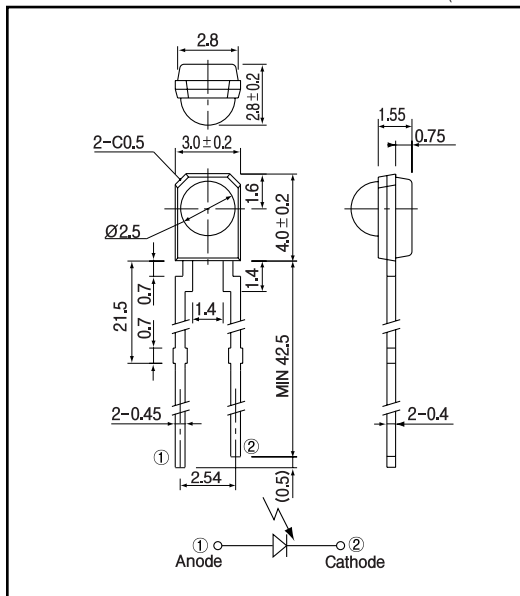
- Visible ray cut off mold type
- Long leads

APPLICATIONS

- Optical Switches

DIMENSIONS

(Unit : mm)



MAXIMUM RATINGS

(Ta=25)

Item	Symbol	Rating	Unit
Reverse voltage	V _r	20	V
Operating temp.	T _{opr.}	- 20 +70	
Storage temp.	T _{stg.}	- 30 +80	
Soldering temp. *1	T _{sol.}	240	

*1. For MAX.5 seconds at the position of 2 mm from the package

ELECTRO-OPTICAL CHARACTERISTICS

(Ta=25)

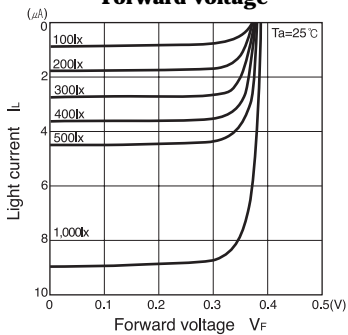
Item	Symbol	Conditions	Min.	Typ.	Max.	Unit.
Open circuit voltage	V _{oc}	E _v = 1,000lx ⁻²		0.4		V
Short circuit current	I _{sc}	E _v = 1,000lx ⁻²		9.0		μA
Curve factor	C.F.			—		—
Dark current	I _d	V _r = 5V			0.5	μA
Capacitance	C _t	V = 0V, f = 1MHz		7		pF
Temperature coefficient of V _{oc}	t			—		mV/
Temperature coefficient of I _{sc}	t			—		%/
Spectral sensitivity				450 1050		nm
Peak wavelength	ρ			900		nm
Half angle				± 40		deg.

*2. Color temp. = 2856K standard Tungsten lamp

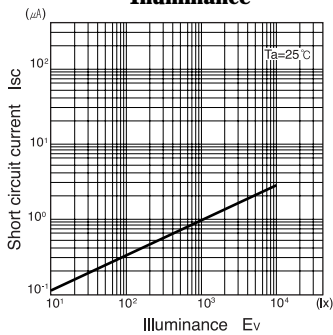
Photo diodes

HP - 304

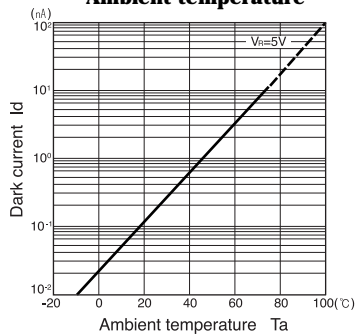
Light current Vs. Forward voltage



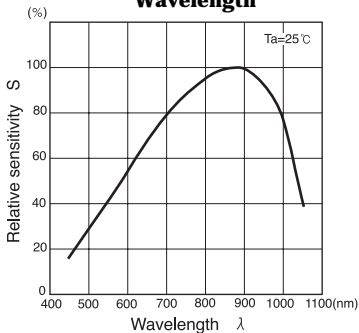
Short circuit current Vs. Illuminance



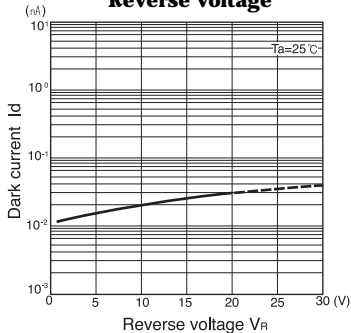
Dark current Vs. Ambient temperature



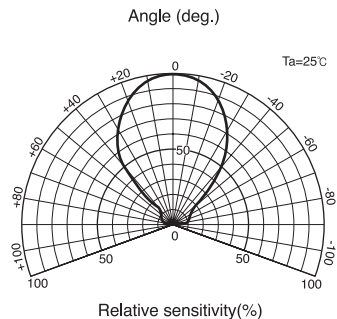
Relative sensitivity Vs. Wavelength



Dark current Vs. Reverse voltage



Radiant Pattern



Capacitance between terminals Vs. Reverse voltage

