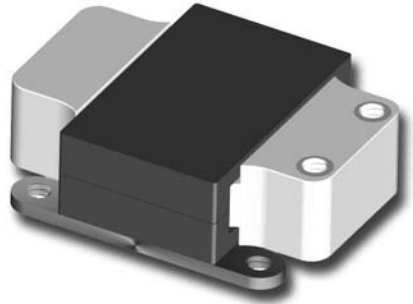


HPC SERIES

www.DataSheet4U.com

Features

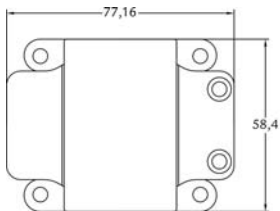
- High power planar chokes for HV applications
- According AEC-Q200.
- High power management.
- Very good inductance stability vs temperature
- Operating frequencies up to 150kHz.
- Skin and proximity effects reduced.
- Storage temperature from -50°C to 175°C
- Operating temperature from -40°C to 90°C with heat sink dissipation (effective temperature up to 125°C)
- Power module-like assembly.
- Threaded output terminals.
- Very low profile.
- Improved room area less than 80 sq cm.



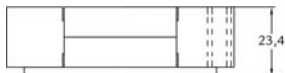
Electrical specifications

Part Number	Inductance ±25%	I _{rms} (A)	I _{peak} (A)	Ripple (App)	Ripple freq (kHz)	Losses (W)
HPC-001	4μH	120	132	24	80	18
HPC-002	2,5μH	165	180	30	200	9

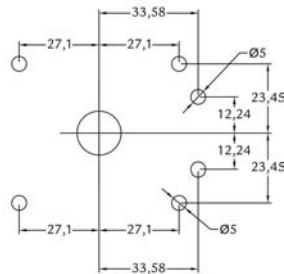
Dimensions



TOP VIEW



SIDE VIEW



TOP VIEW / SCREW POSITION

Electrical Schematics

