



Document Title	HSD250MUW3-A Formal Specification	Page No.	1 / 27
Document No.		Revision	

Date : Mar. 25, 2010

Formal Specification

Model : **HSD250MUW3 - A***

- Note: 1. Please contact HannStar Display Corp. before designing your product based on this module specification.
2. The information contained herein is presented merely to indicate the characteristics and performance of our products. No responsibility is assumed by HannStar for any intellectual property claims or other problems that may result from application based on the module described herein.



Document Title	HSD250MUW3-A Formal Specification	Page No.	2 / 27
Document No.		Revision	

Record of Revisions

Rev.	Date	Sub-Model	Description of change
1.0	Jan 27,2010	A**	HSD 250MUW3-A Formal Specification was 1 st issued
1.1	Mar 25,2010	A**	P4 Update the description of 1.1 Introduction. P4 Update size description of 1.2 Features. P4 Add screen diagonal in 1.3 General Information. P25 Update lot mark



Document Title	HSD250MUW3-A Formal Specification	Page No.	3 / 27
Document No.		Revision	

Contents

1.0	General Descriptions	p.4
2.0	Absolute Maximum Ratings	p.5
3.0	Optical Characteristics	p.6
4.0	Block Diagram	p.11
5.0	I/O Connection Pin Assignment	p.14
6.0	Electrical Characteristics	p.16
7.0	Outline Dimension	p.21
8.0	Lot Mark	p.23
9.0	Package Specification	p.24
10.0	General Precaution	p.25

Document Title	HSD250MUW3-A Formal Specification	Page No.	4 / 27
Document No.		Revision	

1.0 GENERAL DESCRIPTIONS

1.1 Introduction

HannStar Display model **HSD250MUW3-A** is a color active matrix thin film transistor (TFT) liquid crystal display (LCD) that uses amorphous silicon TFT as a switching device. This model is composed of a **FHD resolution (1920 vertical by 1080 horizontal pixel array)** TFT LCD panel, the voltage reference, common voltage, DC-DC converter, column, and row driver circuit..

1.2 Features

- **25"(24.55") FHD** TFT LCD Panel
- LED Backlight System
- Supported Full HD (V:1080 lines, H:1920 pixels) Resolution
- Supported to 75Hz Refresh Rate
- LCD Timing Controller
- RoHS Compliance
- VESA Compatible
- Halogen Free

1.3 Applications

- Desktop Monitors
- Display terminals for AV applications
- Monitors for industrial applications

1.4 General information

Item	Specification		Unit
Outline dimension	568 x 330 x 9.8(Typ)		mm
Display area	543.46 (H) x305.69 (V) (25.0" diagonal)		mm
Screen Diagonal	24.55		inch
Number of Pixel	1920(H) x 1080(V)		Pixels
Pixel pitch	0.283(H) x 0.283(V)		mm
Pixel arrangement	RGB Vertical Stripe		
Color Gamut	68%		NTSC
Display color	16.7M (6-bits+Hi FRC)		
Display mode	Normally white		
Surface treatment	Antiglare, Hard-Coating (3H)		
Weight	1750		g
Back-light	White LED		
Input signal	2-ch LVDS		
Power consumption	System	4.0(Typ.)	W
	B/L	16.13(Typ.)	

Document Title	HSD250MUW3-A Formal Specification	Page No.	5 / 27
Document No.		Revision	

Remark(1): There are two functions, brightness and contrast tuning, to let luminance to 125cd/m2 in OSD. OSD shouldn't restrict the panel's G-T curve for brightness to be 125cd/m2. The higher contrast, the higher angular uniformity. That is to say, if OSD want to tune the panel's luminance to 125 cd/m2, the suitable way is to only tune the brightness function. And if tuning the brightness function to 125 cd/m2, it would be better only to tuning the inverter, not the gray level.

1.5 Mechanical Information

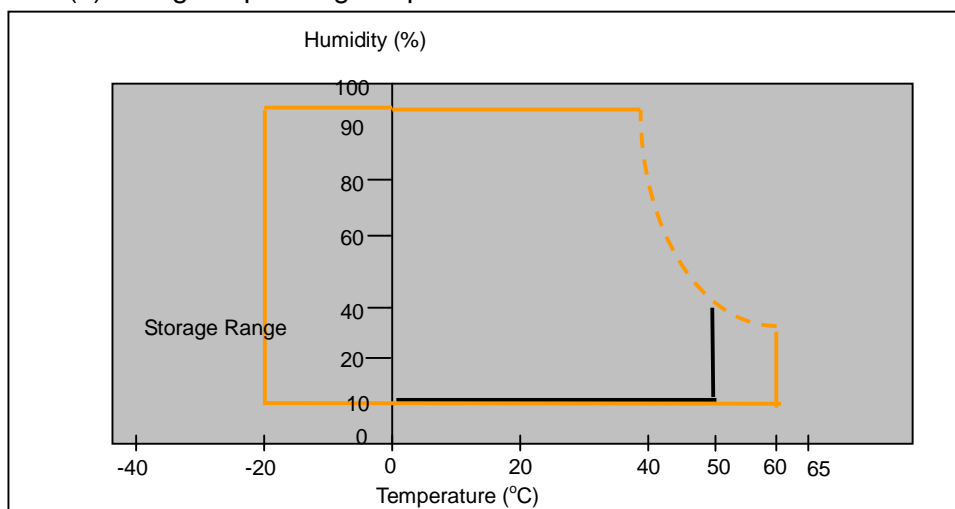
Item		Min.	Typ.	Max.	Unit
Module Size	Horizontal(H)	567.5	568.0	568.5	mm
	Vertical(V)	329.5	330.0	330.5	mm
	Depth(D)	--	9.8	--	mm
Weight (without inverter)		--	1750	--	g
Torque of customer screw hole		--	--	3.0	Kgf*Cm

2.0 ABSOLUTE MAXIMUM RATINGS

2.1 Absolute Rating of Environment

Item	Symbol	Min.	Max.	Unit	Note
Storage temperature	T _{STG}	-20	60	°C	
Operating temperature	T _{OPR}	0	50	°C	(1)
Vibration (non-operating)	V _{NOP}	--	1.5	G	(2)
Shock (non-operating)	S _{NOP}	--	70	G	(3)
Storage humidity	H _{STG}	10	90	%RH	(3)
Operating humidity	H _{OP}	10	90	%RH	(4)
Low pressure (operating)	P _{LOP}	697	--	HPa	(5)
Low pressure (non-operating)	P _{LNOP}	116	--	HPa	(6)

Note (1)Storage /Operating temperature



Document Title	HSD250MUW3-A Formal Specification	Page No.	6 / 27
Document No.		Revision	

(2) 5-500-5Hz sine wave, X, Y, Z each directions, 30 min/cycle.

(3) 11ms, $\pm X$, $\pm Y$, $\pm Z$ direction, one time each. For this shock test,

It is necessary to fill the silicon rubber between the shock jig as buffer.

(4) Max wet bulb temp. $\approx 39^{\circ}\text{C}$

(5) 2 hrs. (10000 feet)

(6) 24hrs. (50000 feet)

2.2 Electrical Absolute Rating:

2.2.1 TFT LCD Module:

Item	Symbol	Min.	Max.	Unit.	Note
Power supply Voltage	VDD	-0.3	6.0	V(DC)	(1)(2)

2.2.2 Back Light Unit:

Item	Symbol	Min.	Max.	Unit	Note
LED current	I_F	--	20.6	mA	(1)(2)(3)
LED Voltage	V_F	2.95	3.4	Volt	(1)(2)(3)

Note: (1) Permanent damage may occur to the LCD module if beyond this specification.

Functional operation should be restricted to the conditions described under Normal Operating Conditions.

(2) To exceed 20.6mA, life time accelerate drop down.

(3) Within $T_a = 25 \pm 2^{\circ}\text{C}$

Document Title	HSD250MUW3-A Formal Specification	Page No.	7 / 27
Document No.		Revision	

3.0 OPTICAL CHARACTERISTICS

3.1 Optical specification

Item		Symbol	Condition	Min.	Typ.	Max.	Unit	Note
Contrast		CR	$\Theta=0^{\circ}$ $\phi=0^{\circ}$ Normal viewing angle	640	800	--		(1)(2)
Response time	Rising	TR +TF		--	4	8	msec	(1)(3)
	Falling							
White luminance (center of screen)		Y_L		200	250	--	cd/m ²	(1)(4)
Color chromaticity (CIE1931)	Red	R _x		-0.03	0.637	+0.03		(1)(4)
		R _y			0.350			
	Green	G _x			0.343			
		G _y			0.615			
	Blue	B _x			0.143			
		B _y			0.061			
	White	W _x	0.313					
		W _y	0.329					
Viewing angle	Hor.	Θ_L	CR>10	75	85	--		
		Θ_R		75	85	--		
	Ver.	Θ_H		65	75	--		
		Θ_L		75	85	--		
Brightness uniformity		B _{UNI}	$\Theta=0^{\circ}$ $\phi=0^{\circ}$	70	--	--	%	(6)

3.2 Measuring Condition

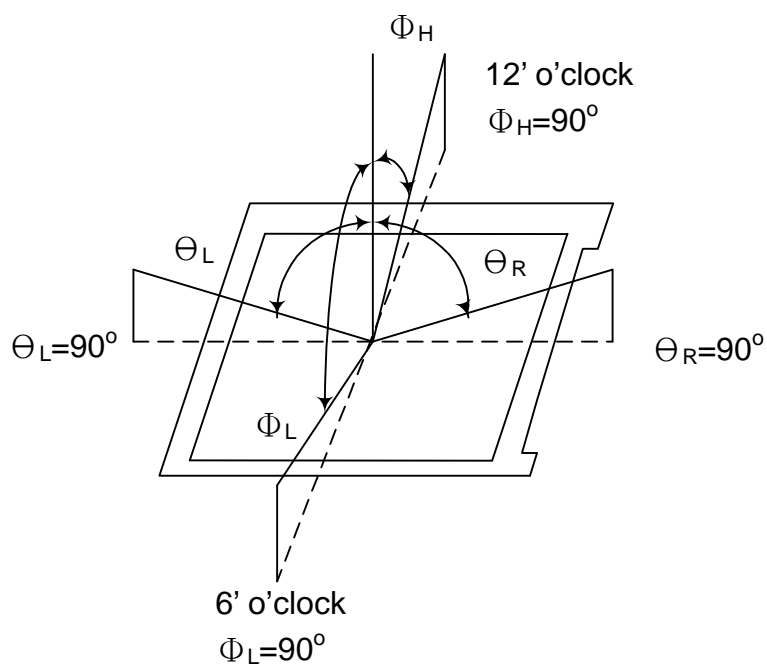
- Measuring surrounding: dark room
- Each LED current is 20 mA
- V_{DD1}=5.0V, f_V=60Hz, f_{DCLK}=66.28MHz
- Surrounding temperature: 25±2°C
- 20min. Warm-up time.

Document Title	HSD250MUW3-A Formal Specification	Page No.	8 / 27
Document No.		Revision	

3.3 Measuring Equipment

- FPM520 of Westar Display technologies, INC., which utilized SR-3 for Chromaticity and BM-5A for other optical characteristics.
- Measuring spot size: 20~21mm

Note (1) Definition of Viewing Angle:

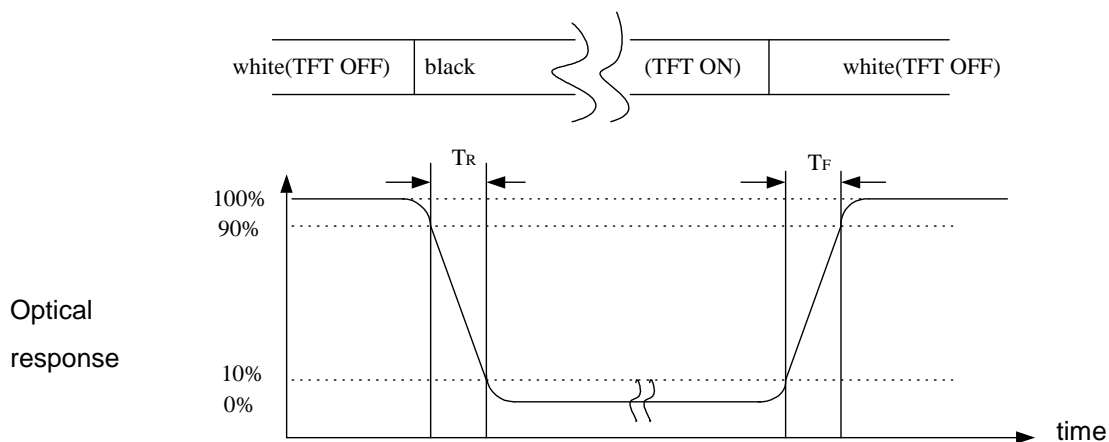


Note (2) Definition of Contrast Ratio(CR) :
measured at the center point of panel

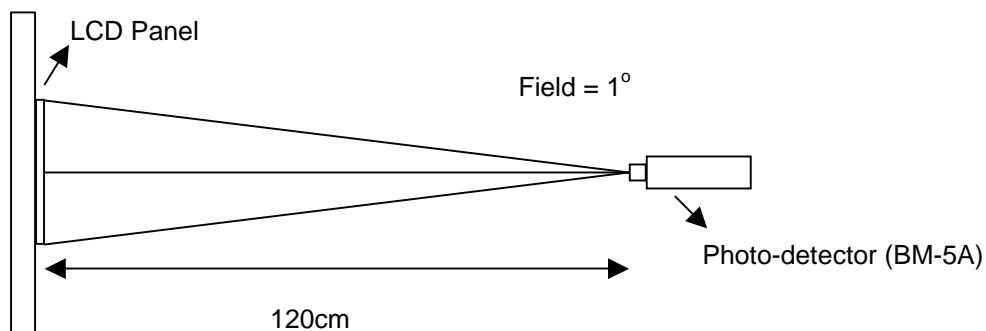
$$CR = \frac{\text{Luminance with all pixels white (L255)}}{\text{Luminance with all pixels black (L0)}}$$

Document Title	HSD250MUW3-A Formal Specification	Page No.	9 / 27
Document No.		Revision	

Note (3) Definition of Response Time: Sum of T_R and T_F



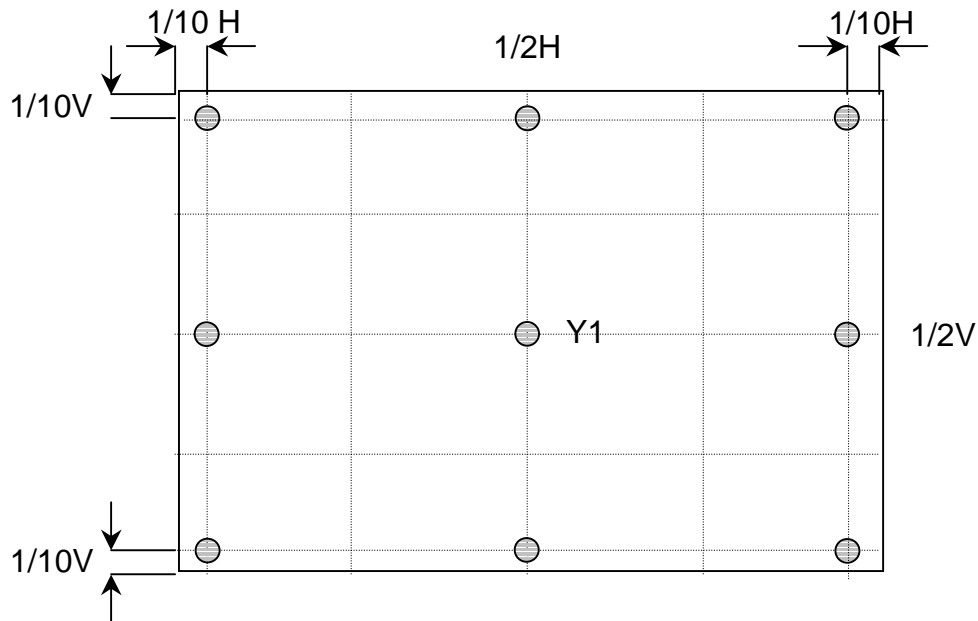
Note (4) Optical characteristic measurement setup



Document Title	HSD250MUW3-A Formal Specification	Page No.	10 / 27
Document No.		Revision	

Note (5) Definition of Center Luminance of White (center)

Center Luminance= Y1



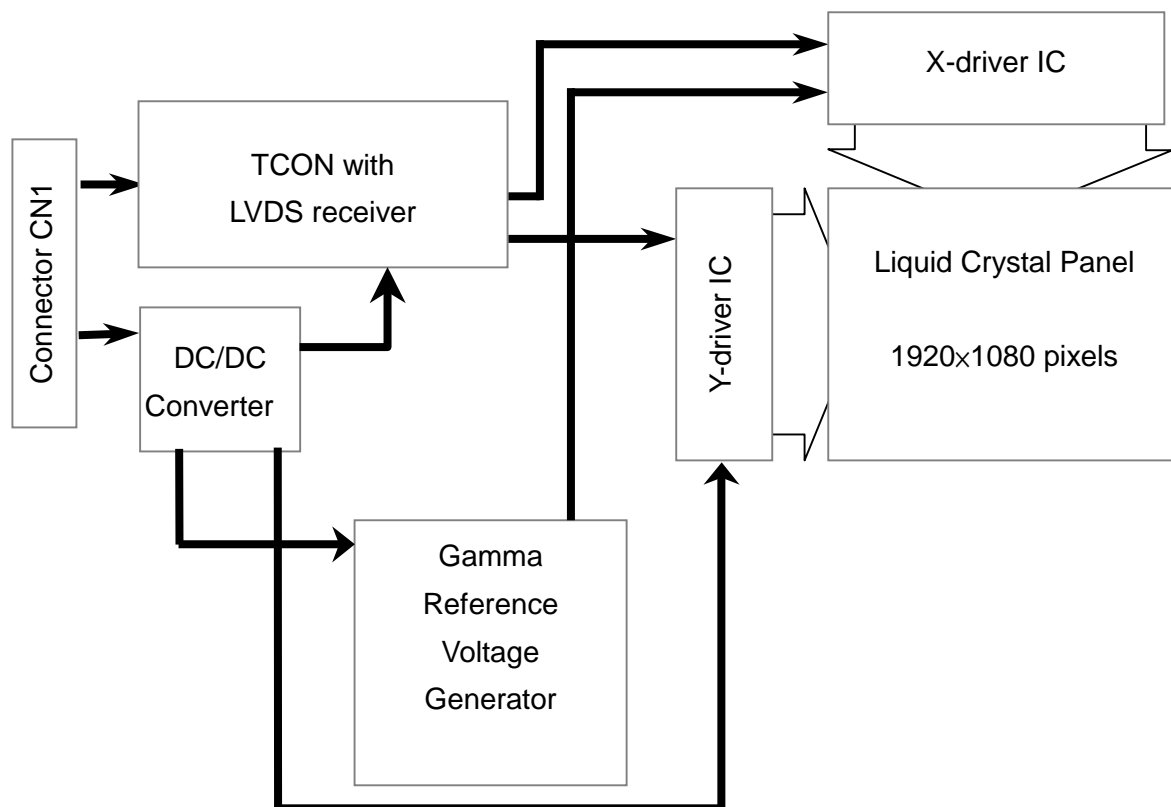
Note (6) Definition of brightness uniformity

$$\text{Luminance uniformity} = \frac{(\text{Min Luminance of 9 points})}{(\text{Max Luminance of 9 points})} \times 100\%$$

Document Title	HSD250MUW3-A Formal Specification	Page No.	11 / 27
Document No.		Revision	

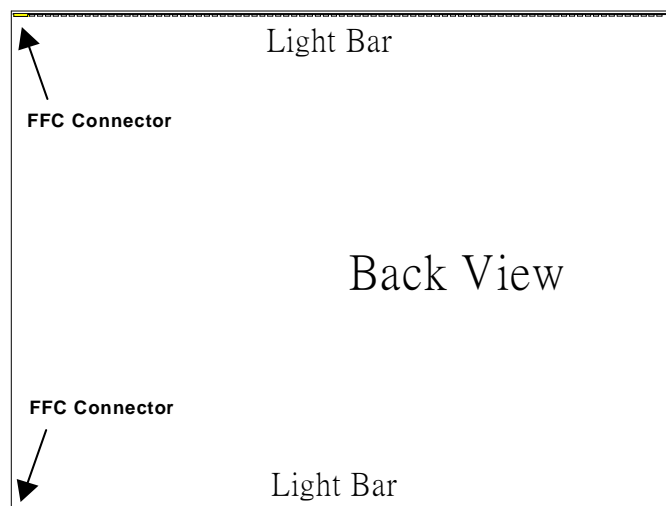
4.0 BLOCK DIAGRAM

4.1 LCD Module Block Diagram:

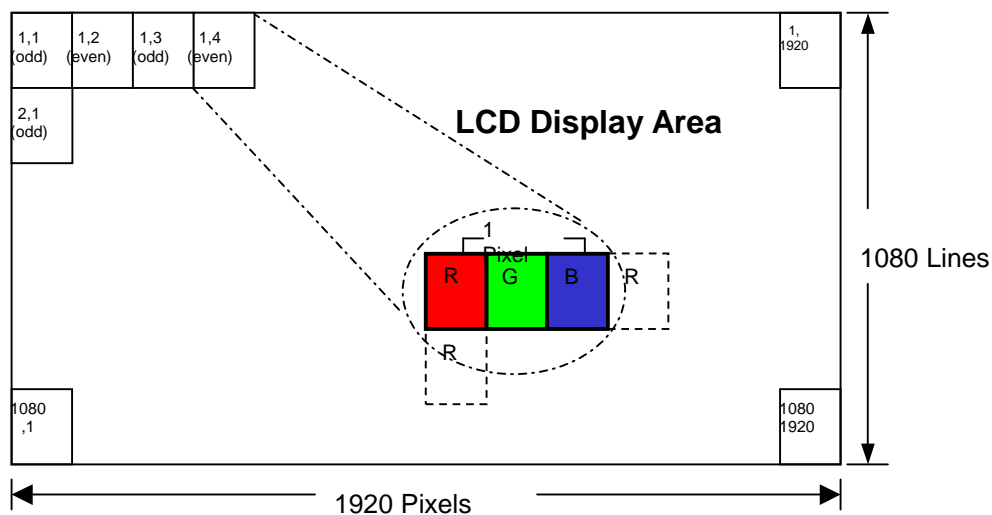


Document Title	HSD250MUW3-A Formal Specification	Page No.	12 / 27
Document No.		Revision	

4.2 Back Light Unit



4.3 Pixel Format



Document Title	HSD250MUW3-A Formal Specification	Page No.	13 / 27
Document No.		Revision	

4.4 Relationship Between Displayed Color and Input

[illegible]

The information contained in this document is the exclusive property of HannStar Display Corporation. It shall not be disclosed, distributed or reproduced in whole or in part without written permission of HannStar Display Corporation.

Document Title	HSD250MUW3-A Formal Specification	Page No.	14 / 27
Document No.		Revision	

5.0 I/F CONNECTION PIN ASSIGNMENT

5.1 Interface Connector (30-pins, STM MSCK240730B or equivalent)

Pin No.	Signal	Description
1	RinO0-	Receiver Signal (-)
2	RinO0+	Receiver Signal (+)
3	RinO1-	Receiver Signal (-)
4	RinO1+	Receiver Signal (+)
5	RinO2-	Receiver Signal (-)
6	RinO2+	Receiver Signal (+)
7	VSS	Ground
8	RinOC-	Clock Signal (-)
9	RinOC+	Clock Signal (+)
10	RinO3-	Receiver Signal (-)
11	RinO3+	Receiver Signal (+)
12	RinE0-	Receiver Signal (-)
13	RinE0+	Receiver Signal (+)
14	VSS	Ground
15	RinE1-	Receiver Signal (-)
16	RinE1+	Receiver Signal (+)
17	VSS	Ground
18	RinE2-	Receiver Signal (-)
19	RinE2+	Receiver Signal (+)
20	RinEC-	Clock Signal (-)
21	RinEC+	Clock Signal (+)
22	RinE3-	Receiver Signal (-)
23	RinE3+	Receiver Signal (+)
24	VSS	Ground
25	NC	SDA
26	NC	SCL
27	NC	NC
28	VDD+5V	Power Supply, 5V (Typical)
29	VDD+5V	Power Supply, 5V (Typical)
30	VDD+5V	Power Supply, 5V (Typical)

Document Title	HSD250MUW3-A Formal Specification	Page No.	15 / 27
Document No.		Revision	

5.2 LED Board Pin Assignment:

CN: LED Power Source Connector (ACES 91500-01001-H01 or equivalent)

Pin No	Symbol	Description
1	RT1-1	Upper LED Bar Return Signal
2	RT1-1	Upper LED Bar Return Signal
3	RT1-2	Upper LED Bar Return Signal
4	VIN-1	Upper LED Power
5	VIN-1	Upper LED Power
6	VIN-1	Upper LED Power
7	VIN-1	Upper LED Power
8	RT1-2	Upper LED Bar Return Signal
9	RT1-3	Upper LED Bar Return Signal
10	RT1-3	Upper LED Bar Return Signal

Pin No	Symbol	Description
1	RT2-1	Lower LED Bar Return Signal
2	RT2-1	Lower LED Bar Return Signal
3	RT2-2	Lower LED Bar Return Signal
4	VIN-2	Lower LED Power
5	VIN-2	Lower LED Power
6	VIN-2	Lower LED Power
7	VIN-2	Lower LED Power
8	RT2-2	Lower LED Bar Return Signal
9	RT2-3	Lower LED Bar Return Signal
10	RT2-3	Lower LED Bar Return Signal

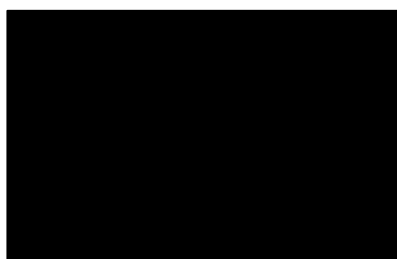
Document Title	HSD250MUW3-A Formal Specification	Page No.	16 / 27
Document No.		Revision	

6.0 ELECTRICAL CHARACTERISTICS

6.1 TFT LCD Module:

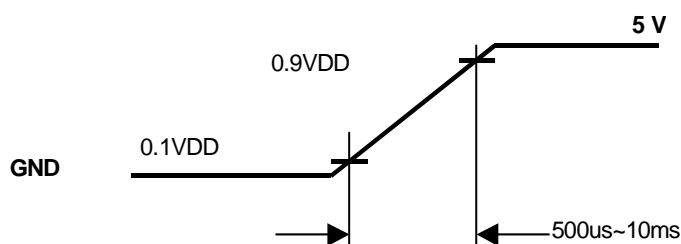
Item	Symbol	Min.	Typ.	Max.	Unit	Note
Voltage of power supply	V_{DD}	4.5	5.0	5.5	V	
Current of power supply	I_{DD0}	800	1000	1200	mA	(1)
Vsync frequency	f_V	48	60	75	Hz	(2)
Hsync frequency	f_H	52.61	65.76	82.2	KHz	
Frequency	f_{DCLK}	53.02	66.28	85	MHz	
Input rush current	I_{RUSH}	---	---	4.5	A	(3)

Note (1) $V_{DD} = 5.0V$, Black pattern (L0)



Note (2) When f_v is too low, a flicker may be occurred on the display.

Note (3) Input Rush Current condition



Document Title	HSD250MUW3-A Formal Specification	Page No.	17 / 27
Document No.		Revision	

6.2 Back-Light Unit

Parameter	Symbol	Min	Typ	Max	Units	Condition
Light Bar Input Current	I_F	---	360	---	mA	Ta=25°C
Light Bar Input Voltage	V_F	---	44.8	---	Volt	Ta=25°C
Power consumption	P_{LED}	---	16.13	---	Watt	Ta=25°C Note (1)
LED Life-Time	N/A	--	30,000	--	Hour	Ta=25°C $I_F=360mA$ Note (2)

Note (1): Calculator value for reference $P=I_F \times V_F$

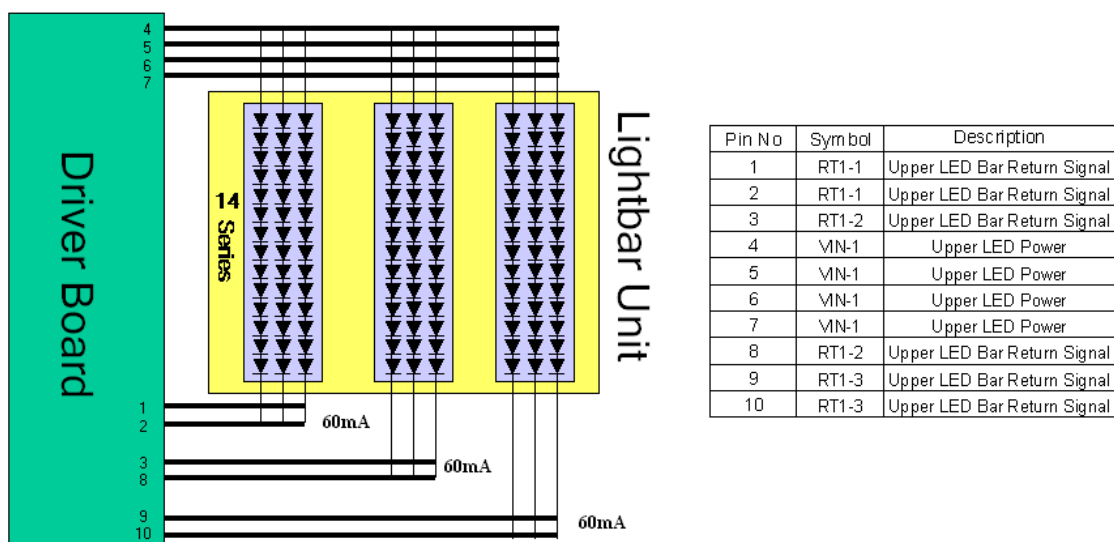
Note (2): The LED lifetime defines as the estimated time to 50% degradation of Original luminous.

Note (3): For better LED light bar driving quality. It is recommended to utilize the adaptive boost converter with current balancing function to drive LED light-bar.

Note (4): Two Light bar Input current 360mA, One Light bar Input current 180mA.

Note (5): LED light bar configuration is shown as below. (Light bar 1 same as Light bar 2)

Light Bar 1 configuration drawing

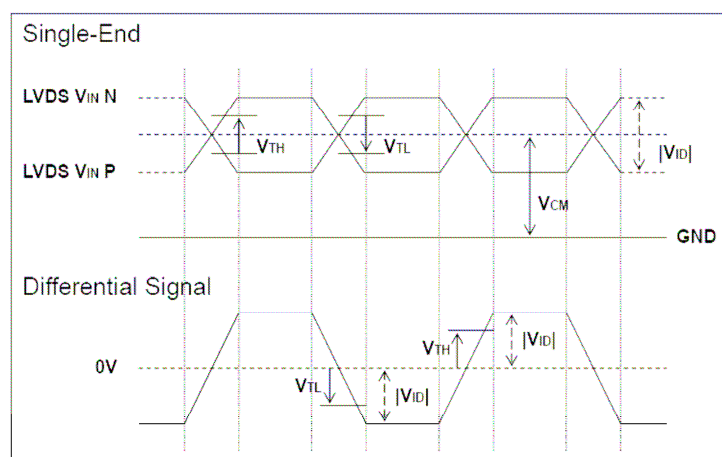


Document Title	HSD250MUW3-A Formal Specification	Page No.	18 / 27
Document No.		Revision	

6.3 Switching Characteristics for LVDS Receiver

Item	Symbol	Min.	Typ.	Max.	Unit	Conditions
Differential Input High Threshold	V_{th}	—	—	+100	mV	$V_{CMLVDS}=1.25V$
Differential Input Low Threshold	V_{tl}	-100	—	—	mV	
Input Current	I_{IN}	-10	—	+10	μA	$V_{IN}=2.4V/0V$, $V_{DD}=3.6V$
Differential input Voltage	$ V_{ID} $	0.1	—	0.6	V	
Common Mode Voltage Offset	V_{CM}	1.15	—	1.35	V	
Clock Frequency	fc	50	54	67.5	MHz	

Differential Signal Diagram



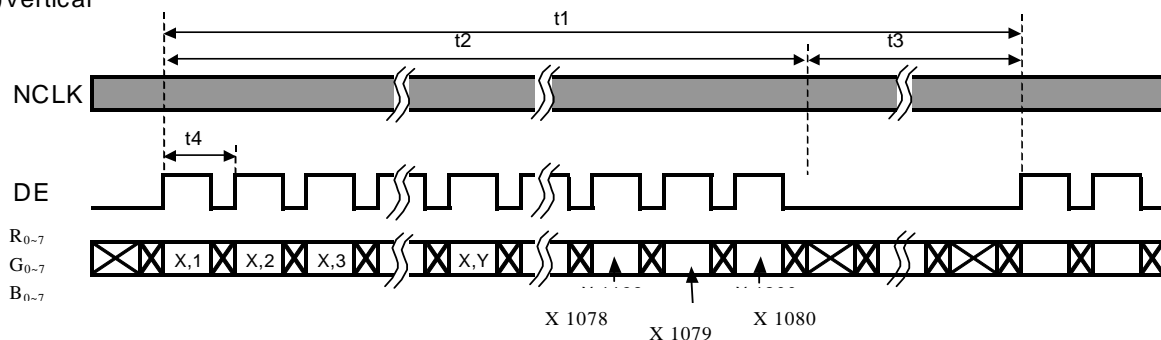
Document Title	HSD250MUW3-A Formal Specification	Page No.	19 / 27
Document No.		Revision	

6.4 Interface Timing (DE mode)

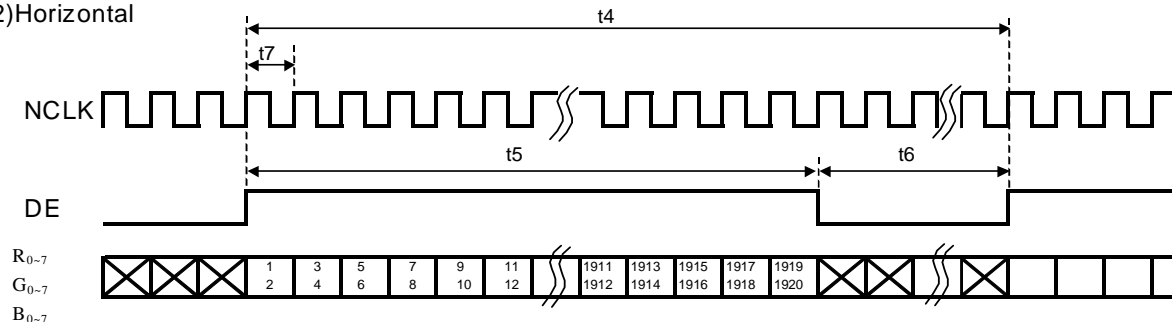
Item	Symbol	Min.	Typ.	Max.	Unit
Frame Rate	--	48	60	75	Hz
Frame Period	t1	1088	1096	1104	line
Vertical Display Time	t2	1080	1080	1080	line
Vertical Blanking Time	t3	8	16	24	line
1 Line Scanning Time	t4	992	1008	1276	clock
Horizontal Display Time	t5	960	960	960	clock
Horizontal Blanking Time	t6	32	48	316	clock
Clock Rate	t7	53.02	66.28	85	MHz

Timing Diagram of Interface Signal (DE mode)

(1)Vertical

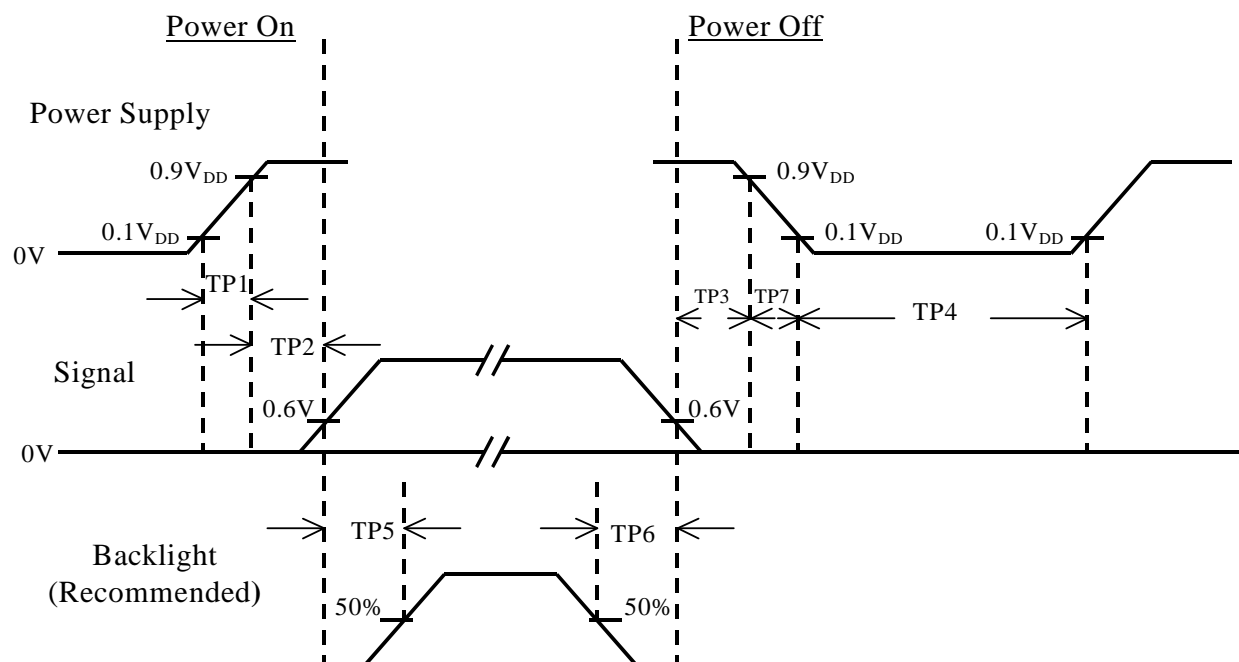


(2)Horizontal



Document Title	HSD250MUW3-A Formal Specification	Page No.	20 / 27
Document No.		Revision	

6.5 Power On / Off Sequence :



Item	Min.	Typ.	Max.	Unit	Remark
TP1	0.5	--	10	msec	
TP2	0.01	--	50	msec	
TP3	20	35	50	msec	
TP4	1000	--	--	msec	
TP5	200	--	--	msec	
TP6	200	--	--	msec	
TP7	1	--	10	msec	

Note : (1) The supply voltage of the external system for the module input should be the same as the definition of V_{DD}.

(2) Apply the lamp voltage within the LCD operation range. When the back-light turns on before the LCD operation or the LCD turns off before the back-light turns off, the display may momentarily become white.

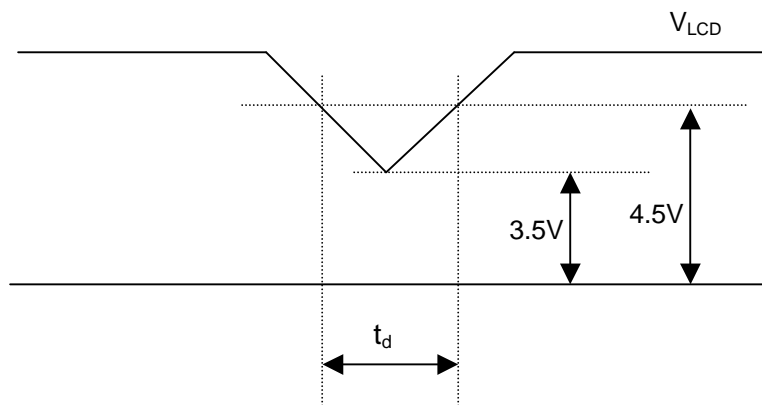
(3) In case of V_{DD} = off level, please keep the level of input signal on the low or keep a high impedance.

(4) TP4 should be measured after the module has been fully discharged between power off and on period.

(5) Interface signal shall not be kept at high impedance when the power is on.

Document Title	HSD250MUW3-A Formal Specification	Page No.	21 / 27
Document No.		Revision	

6.6 V_{LCD} Power Dip Condition :



Note : (1) Dip condition

$$3.5V \leq V_{LCD} \leq 4.5V, t_d \leq 20ms$$

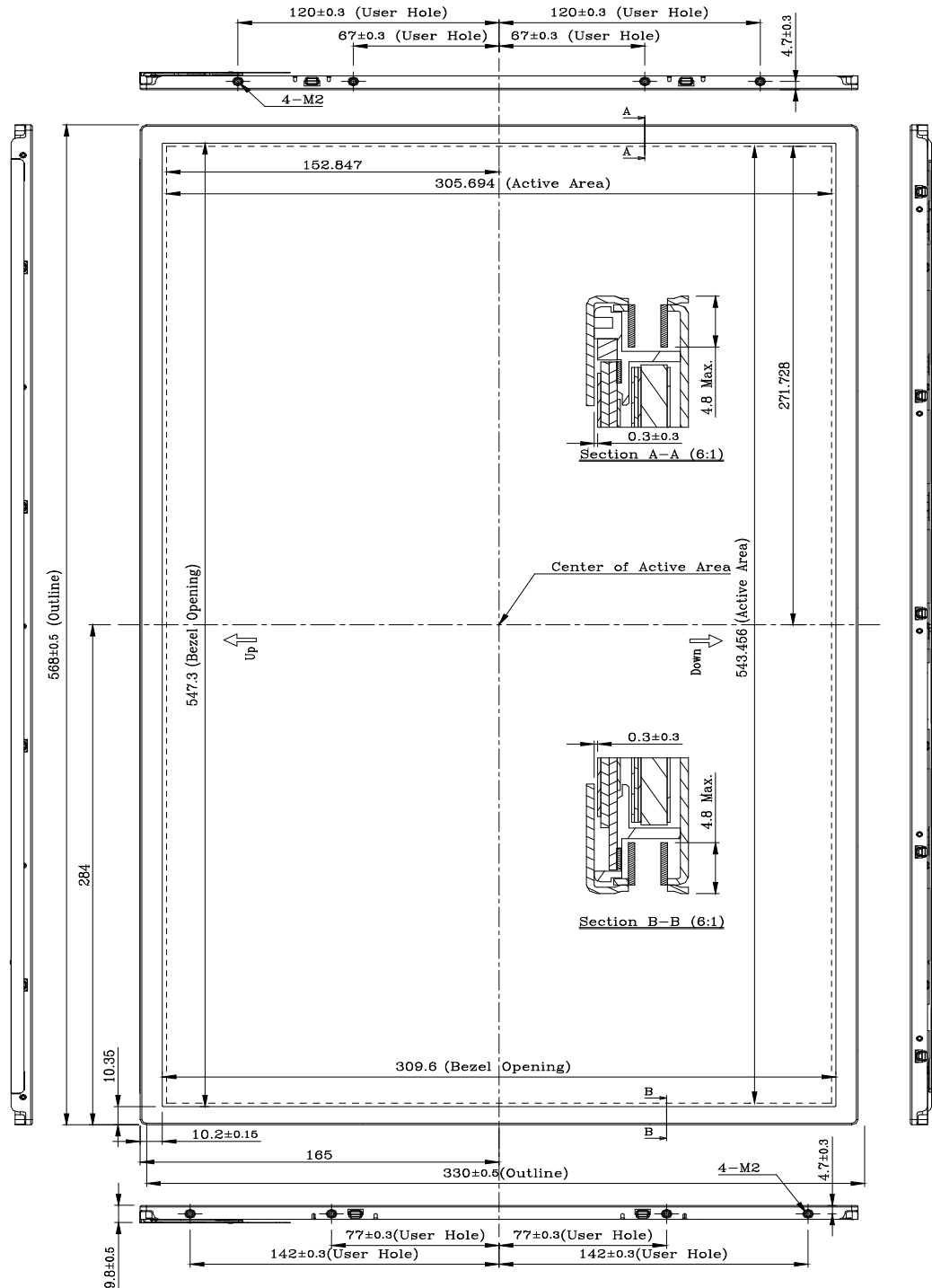
(2) $V_{LCD} < 3.5V$

V_{LCD} - dip conditions should also follow the power On/Off conditions for supply voltage.

Document Title	HSD250MUW3-A Formal Specification	Page No.	22 / 27
Document No.		Revision	

7.0 OUTLINE DIMENSION

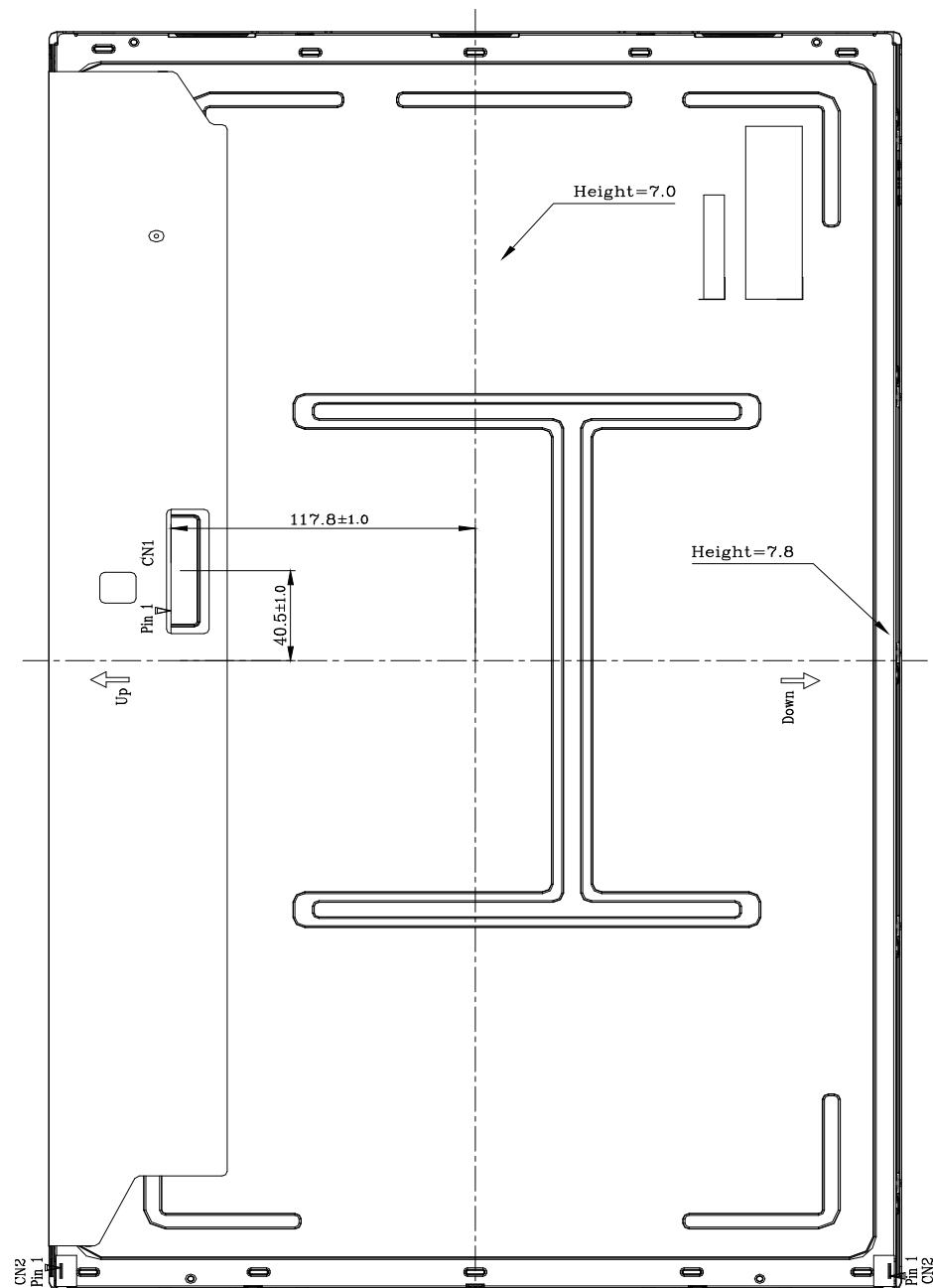
7.1 250MUW3-A00 Front View:



The information contained in this document is the exclusive property of HannStar Display Corporation. It shall not be disclosed, distributed or reproduced in whole or in part without written permission of HannStar Display Corporation.

Document Title	HSD250MUW3-A Formal Specification	Page No.	23 / 27
Document No.		Revision	

7.2 250MUW3-A00 Back View:



1. Backlight: LED Light Source
2. I/F Connector (CN1) Specification:
STM MSCK2407P30 or Equivalent
3. LED Light Bar FFC Connector (CN2~CN3) Specification:
ACBS 91500-01001-H01 or Equivalent
4. User Mounting Torque Spec: 2Kgf-cm Max.
5. Unspecified Tolerance is $\pm 0.5\text{mm}$

Document Title	HSD250MUW3-A Formal Specification	Page No.	24 / 27
Document No.		Revision	

8.0 LOT MARK

8.1 Lot Mark

1	2	3	4	5	6	7	8	9	10	11	12	13	14	15
---	---	---	---	---	---	---	---	---	----	----	----	----	----	----

code 1,2,3,4,5,6: HannStar internal flow control code.

code 7: production location.

code 8: production year.

code 9: production month.

code 10,11,12,13,14,15: serial number.

Note (1) Production Year: Code 8 is defined by the last number of the year. For example:

Year	2001	2002	2003	2004	2005	2006	2007	2008	2009	2010
Mark	1	2	3	4	5	6	7	8	9	0

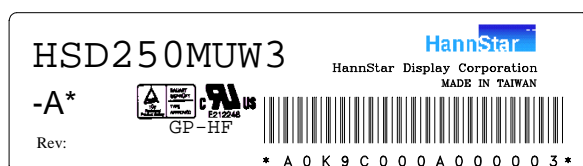
Note (2) Production Month

Month	Jan.	Feb.	Mar.	Apr.	May.	Jun.	Jul.	Aug.	Sep.	Oct.	Nov.	Dec.
Mark	1	2	3	4	5	6	7	8	9	A	B	C

8.2 Location of Lot Mark

(1) The label is attached to the backside of the LCD module.

(2) This is subject to change without prior notice.



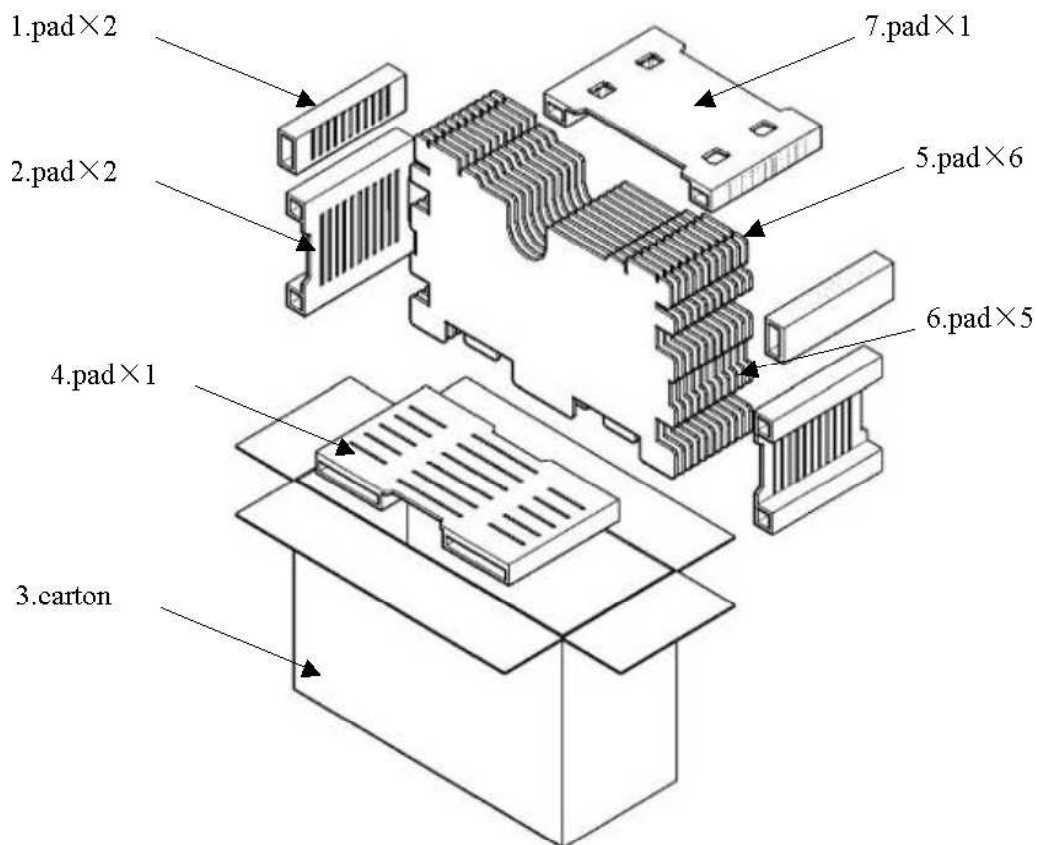
Document Title	HSD250MUW3-A Formal Specification	Page No.	25 / 27
Document No.		Revision	

9.0 PACKAGE SPECIFICATION

9.1 Packing form

- (1) package quantity in one carton: 10 Pcs.
- (2) carton size: 690mm x 304mm x 461mm.
- (3) for domestic transportation only.

9.2 Packing assembly drawings



Document Title	HSD250MUW3-A Formal Specification	Page No.	26 / 27
Document No.		Revision	

10.0 GENERAL PRECAUTION

10.1 Use Restriction

This product is not authorized for use in life supporting systems, aircraft navigation control systems, military systems and any other application where performance failure could be life-threatening or otherwise catastrophic.

10.2 Disassembling or Modification

Do not disassemble or modify the module. It may damage sensitive parts inside LCD module, and may cause scratches or dust on the display. HannStar does not warrant the module, if customers disassemble or modify the module.

10.3 Breakage of LCD Panel

10.3.1 If LCD panel is broken and liquid crystal spills out, do not ingest or inhale liquid crystal, and do not contact liquid crystal with skin.

10.3.2 If liquid crystal contacts mouth or eyes, rinse out with water immediately.

10.3.3 If liquid crystal contacts skin or cloths, wash it off immediately with alcohol and rinse thoroughly with water.

10.3.4 Handle carefully with chips of glass that may cause injury, when the glass is broken.

10.4 Electric Shock

10.4.1 Disconnect power supply before handling LCD module.

10.4.2 Do not pull or fold the CCFL cable.

10.4.3 Do not touch the parts inside LCD modules and the fluorescent lamp's connector or cables in order to prevent electric shock.

10.5 Absolute Maximum Ratings and Power Protection Circuit

10.5.1 Do not exceed the absolute maximum rating values, such as the supply voltage variation, input voltage variation, variation in parts' parameters, environmental temperature, etc., otherwise LCD module may be damaged.

10.5.2 Please do not leave LCD module in the environment of high humidity and high temperature for a long time.

10.5.3 It's recommended employing protection circuit for power supply.

10.6 Operation

10.6.1 Do not touch, push or rub the polarizer with anything harder than HB pencil lead.

Use fingerstalls of soft gloves in order to keep clean display quality, when persons handle the LCD module for incoming inspection or assembly.

10.6.2 When the surface is dusty, please wipe gently with absorbent cotton or other soft material.

10.6.3 Wipe off saliva or water drops as soon as possible. If saliva or water drops contact with polarizer for a long time, they may causes deformation or color fading.

11.6.4 When cleaning the adhesives, please use absorbent cotton wetted with a little petroleum benzene or other adequate solvent.

Document Title	HSD250MUW3-A Formal Specification	Page No.	27 / 27
Document No.		Revision	

10.7 Mechanism

Please mount LCD module by using mounting holes arranged in four corners tightly.

10.8 Static Electricity

10.8.1 Protection film must remove very slowly from the surface of LCD module to prevent from electrostatic occurrence.

10.8.2 Because LCD module uses CMOS-IC on circuit board and TFT-LCD panel, it is very weak to electrostatic discharge. Please be careful with electrostatic discharge.

10.8.3 Persons who handle the module should be grounded through adequate methods.

10.9 Strong Light Exposure

The module shall not be exposed under strong light such as direct sunlight. Otherwise, display characteristics may be changed.

10.10 Disposal

When disposing LCD module, obey the local environmental regulations.