

**PROPRIETARY NOTE**

THIS SPECIFICATION IS THE PROPERTY OF BOE HF AND SHALL NOT BE REPRODUCED OR COPIED WITHOUT THE WRITTEN PERMISSION OF BOE HF AND MUST BE RETURNED TO BOE HF UPON ITS REQUEST

TITLE : HT185WX1-501 For B3**Product Specification****Rev. 0**

HEFEI BOE OPTOELECTRONICS TECHNOLOGY

SPEC. NUMBER
S864-6003

PRODUCT GROUP
TFT-LCD
TFT MODULE

Rev. 0

ISSUE DATE
2011.1. 13

PAGE
1 OF 28

R2010-6053-O(1/3)

A4(210 X 297)

京东方
BOE

PRODUCT GROUP

REV

ISSUE DATE

TFT MODULE

0

2011.1.13

REVISION HISTORY

REV.	ECN No.	DESCRIPTION OF CHANGES	DATE	PREPARED
0		Initial Release	2011.1.11	李恒滨

SPEC. NUMBER

S864-6003

SPEC. TITLE

HT185WX1-501 For B3 Product Specification_ Rev.0

PAGE

2 OF 28

R2010-6053-O(2/3)

A4(210 X 297)



PRODUCT GROUP

REV

ISSUE DATE

TFT MODULE

0

2011.1.13

Contents

No.	Item	Page
1.0	General Description	4
2.0	Absolute Maximum Ratings	6
3.0	Electrical Specifications	7
4.0	Optical Specifications	8
5.0	Interface Connection	10
6.0	Signal Timing Specifications	13
7.0	Signal Timing Waveforms of Interface Signal	15
8.0	Input Signals, Display Colors & Gray Scale of Colors	17
9.0	Power Sequence	18
10.0	Mechanical Characteristics	19
11.0	Reliability Test	20
12.0	Handling& Cautions	21
13.0	Product Serial Number	22
14.0	Packing	23
15.0	Appendix	25

SPEC. NUMBER

SPEC. TITLE

PAGE


S864-6003

HT185WX1-501 For B3 Product Specification _Rev.0

3 OF 28

R2010-6053-O(3/3)

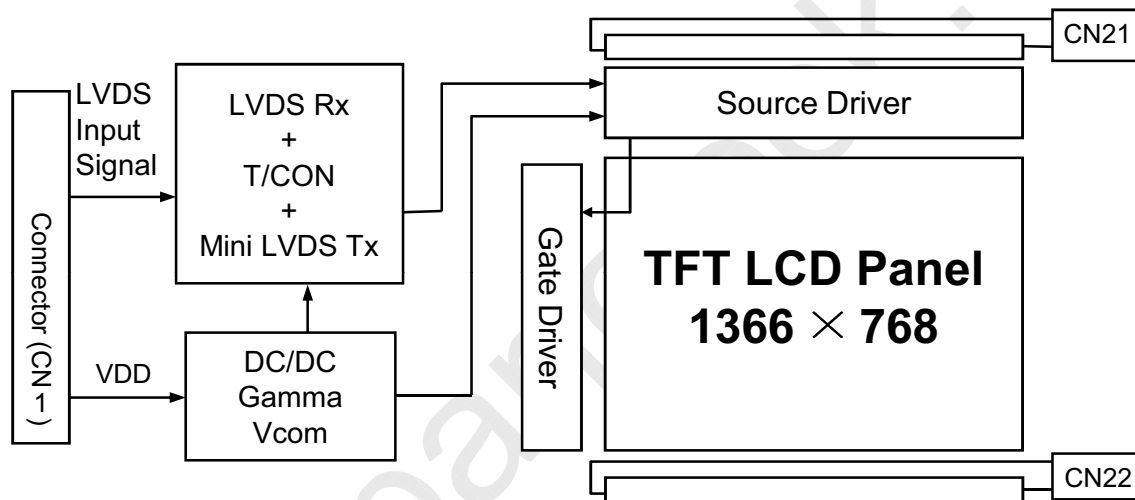
A4(210 X 297)

 京东方 BOE	PRODUCT GROUP	REV	ISSUE DATE
	TFT MODULE	0	2011.1.13

1.0 GENERAL DESCRIPTION

1.1 Introduction

HT185WX1-501 is a color active matrix TFT LCD module using amorphous silicon TFT's (Thin Film Transistors) as an active switching devices. This module has a 18.5 inch diagonally measured active area with WXGA resolutions (1366 horizontal by 768 vertical pixel array). Each pixel is divided into RED, GREEN, BLUE dots which are arranged in vertical stripe and this module can display 16.7M colors. The TFT-LCD panel used for this module is adapted for a low reflection and higher color type.



1.2 Features

- LVDS Interface with 1 pixel / clock
- High-speed response
- Low power consumption
- 6-bit (Hi-FRC) color depth, display 16.7M colors
- Incorporated edge type back-light (Two lamps)
- High luminance and contrast ratio, low reflection and normal viewing angle
- DE (Data Enable) only
- RoHS /TCO 5.0 Compliant

SPEC. NUMBER	SPEC. TITLE	PAGE
S864-6003	HT185WX1-501 For B3 Product Specification _Rev.0	4 OF 28



PRODUCT GROUP

REV

ISSUE DATE

TFT MODULE

0

2011.1.13

1.3 Application

- Desktop Type of PC & Workstation Use
- Slim-Size Display for Stand-alone Monitor
- Display Terminals for Control System
- Monitors for Process Controller

1.4 General Specification

The followings are general specifications at the model HT185WX1-501.

<Table 1. General Specifications>

Parameter	Specification	Unit	Remarks
Active area	409.8(H) × 230.4(V)	mm	
Number of pixels	1366(H) × 768(V)	pixels	
Pixel pitch	0.3(H) × 0.3(V)	mm	
Pixel arrangement	RGB Vertical stripe		
Display colors	16.7M	colors	
Display mode	Normally White		
Dimensional outline	430.4(H) × 254.6(V) × 12.6(D) typ.	mm	
Weight	1700 (max.)	g	
Surface Treatment	Haze 25%, 3H		
Back-light	Top/Bottom edge side, 2-CCFL type		

SPEC. NUMBER

S864-6003

SPEC. TITLE

HT185WX1-501 For B3 Product Specification _Rev.0

PAGE

5 OF 28

R2010-6053-O(3/3)

A4(210 X 297)



PRODUCT GROUP

REV

ISSUE DATE

TFT MODULE

0

2011.1.13

2.0 ABSOLUTE MAXIMUM RATINGS

The followings are maximum values which, if exceed, may cause faulty operation or damage to the unit. The operational and non-operational maximum voltage and current values are listed in Table 2.

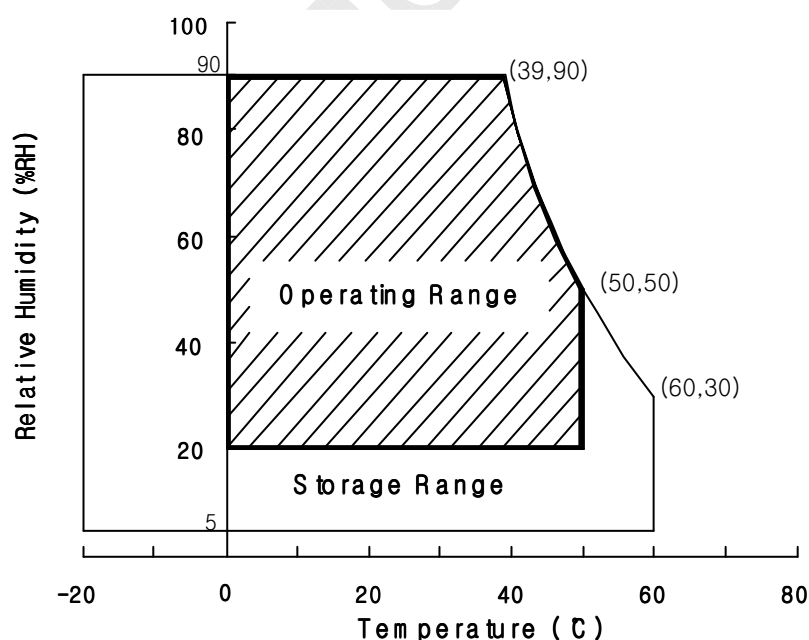
< Table 2. Absolute Maximum Ratings >

[VSS=GND=0V]

Parameter	Symbol	Min.	Max.	Unit	Remarks
Power Supply Voltage	V_{DD}	-0.5	5.5	V	Ta = 25 °C
Logic Supply Voltage	V_{IN}	VSS-0.3	$V_{DD}+0.3$	V	
Back-light Lamp Current	I_{BL}	3	8.0	mA	
Back-light Lamp frequency	F_L	40	80	kHz	
Operating Temperature	T_{OP}	0	+50	°C	1)
Storage Temperature	T_{ST}	-20	+60	°C	1)

Note : 1) Temperature and relative humidity range are shown in the figure below.

Wet bulb temperature should be 39 °C max. and no condensation of water.



SPEC. NUMBER
S864-6003

SPEC. TITLE
HT185WX1-501 For B3 Product Specification _Rev.0

PAGE
6 OF 28

R2010-6053-O(3/3)

A4(210 X 297)



PRODUCT GROUP

REV

ISSUE DATE

TFT MODULE

0

2011.1.13

3.0 ELECTRICAL SPECIFICATIONS

3.1 Electrical Specifications

< Table 3. Electrical specifications >

[Ta = 25 ± 2 °C]

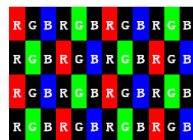
Parameter		Min.	Typ.	Max.	Unit	Remarks
Power Supply Voltage	V _{DD}	4.5	5.0	5.5	V	Note 1
Power Supply Current	I _{DD}	-	600	1000	mA	
In-Rush Current	I _{RUSH}	-	2.0	3.0	A	Note 2
Permissible Input Ripple Voltage	V _{RF}	-	-	100	mV	V _{DD} = 5.0V
High Level Differential Input Threshold Voltage	V _{IH}	-	-	+100	mV	
Low Level Differential Input Threshold Voltage	V _{IL}	-100	-	-	mV	
Differential input voltage	V _{ID}	200	-	600	mV	
Differential input common mode voltage	V _{cm}	1.0	1.2	1.5		V _{IH} =100mV, V _{IL} =-100mV
Back-light Lamp Voltage	V _{BL}	-	730	880	V _{rms}	
Back-light Lamp Current	I _{BL}	3.0	7.5	8.0	mA _{rms}	
Back-light Lamp operating Frequency	F _L	40	-	80	KHz	Note 3
Lamp Start Voltage		-	-	1400	V _{rms}	25°C, Note 4
		-	-	1800	V _{rms}	0°C, Note 4
Lamp Life		50,000	-	-	Hrs	I _{BL} = 7.5 mA
Power Consumption	P _D	-	3	4.5	W	
	P _{BL}	-	10.68	12.0	W	I _{BL} = 7.5 mA, Note 5
	P _{total}	-	13.68	16.5	W	

Notes : 1. The supply voltage is measured and specified at the interface connector of LCM.

The current draw and power consumption specified is for VDD=5.0V, Frame rate=75Hz and Clock frequency = 95MHz. Test Pattern of power supply current

a) Typ : Color Bar pattern

b) Max : Skip Sub Pixel Pattern



2. Duration of rush current is about 2 ms and rising time of VDD is 520 μs ± 20 %

3. The lamp frequency should be selected as different as possible from the horizontal synchronous frequency and its harmonics to avoid interference, which may cause line flow on the display

4. The voltage above this value should be applied to the lamps for more than 1 second to start-up. Otherwise the lamps may not be turned on.

5. Calculated value for reference (V_{BL} × I_{BL}) × 2 excluding inverter loss.

SPEC. NUMBER

SPEC. TITLE

PAGE

S864-6003

HT185WX1-501 For B3 Product Specification _Rev.0

7 OF 28

R2010-6053-O(3/3)

A4(210 X 297)



PRODUCT GROUP

REV

ISSUE DATE

TFT MODULE

0

2011.1.13

4.0 OPTICAL SPECIFICATION

4.1 Overview

The test of Optical specifications shall be measured in a dark room (ambient luminance ≤ 1 lux and temperature = $25 \pm 2^\circ\text{C}$) with the equipment of Luminance meter system (Goniometer system and TOPCONE BM-5) and test unit shall be located at an approximate distance 50cm from the LCD surface at a viewing angle of θ and Φ equal to 0° . We refer to $\theta_{0=0}$ ($=\theta_3$) as the 3 o'clock direction (the "right"), $\theta_{0=90}$ ($=\theta_{12}$) as the 12 o'clock direction ("upward"), $\theta_{0=180}$ ($=\theta_9$) as the 9 o'clock direction ("left") and $\theta_{0=270}$ ($=\theta_6$) as the 6 o'clock direction ("bottom"). While scanning θ and/or Φ , the center of the measuring spot on the Display surface shall stay fixed. The measurement shall be executed after 30 minutes warm-up period. VDD shall be 5.0V +/-10% at 25°C . Optimum viewing angle direction is 6 'clock.

4.2 Optical Specifications

[VDD = 5.0V, Frame rate = 60Hz, Clock = 78MHz, $I_{BL} = 7.5\text{mA}$, $T_a = 25 \pm 2^\circ\text{C}$]

Parameter		Symbol	Condition	Min.	Typ.	Max.	Unit	Remark
Viewing Angle range	Horizontal	θ_3	CR > 10	35	45	-	Deg.	Note 1
		θ_9		35	45	-	Deg.	
	Vertical	θ_{12}		20	25	-	Deg.	
		θ_6		35	40	-	Deg.	
Viewing Angle range	Horizontal	θ_3	CR > 5	50	-	-	Deg.	
		θ_9		50	-	-	Deg.	
	Vertical	θ_{12}		30	-	-	Deg.	
		θ_6		45	-	-	Deg.	
Luminance Contrast ratio		CR		450	600	-		Note 2
Luminance of White		Y_w		160	200	-	cd/m ²	Note 3
White luminance uniformity		ΔY		75	80	-	%	Note 4
Reproduction of color	White	W_x	$\theta = 0^\circ$ (Center) Normal Viewing Angle	0.283	0.313	0.343		Note 5
		W_y		0.299	0.329	0.359		
	Red	R_x		0.616	0.646	0.676		
		R_y		0.304	0.334	0.364		
	Green	G_x		0.266	0.296	0.326		
		G_y		0.572	0.602	0.632		
	Blue	B_x		0.114	0.144	0.174		
		B_y		0.038	0.068	0.098		
Response Time	Rising	T_r		-	1.5	2.5	ms	Note 6
	Falling	T_f		-	3.5	5.5	ms	
Cross Talk		CT		-	-	2.0	%	Note 7

SPEC. NUMBER

S864-6003

SPEC. TITLE


HT185WX1-501 For B3 Product Specification _Rev.0

PAGE

8 OF 28

R2010-6053-O(3/3)

A4(210 X 297)

 京东方 BOE	PRODUCT GROUP	REV	ISSUE DATE
	TFT MODULE	0	2011.1.13

Note :

- Viewing angle is the angle at which the contrast ratio is greater than 10. The viewing are determined for the horizontal or 3, 9 o'clock direction and the vertical or 6, 12 o'clock direction with respect to the optical axis which is normal to the LCD surface.
- Contrast measurements shall be made at viewing angle of $\theta = 0^\circ$ and at the center of the LCD surface. Luminance shall be measured with all pixels in the view field set first to white, then to the dark (black) state. (See FIGURE 1 shown in Appendix) Luminance Contrast Ratio (CR) is defined mathematically.

$$CR = \frac{\text{Luminance when displaying a white raster}}{\text{Luminance when displaying a black raster}}$$

- Center Luminance of white is defined as the LCD surface. Luminance shall be measured with all pixels in the view field set first to white. This measurement shall be taken at the locations shown in FIGURE 2 for a total of the measurements per display.
- The White luminance uniformity on LCD surface is then expressed as :
 $\Delta Y = (\text{Minimum Luminance of 9points} / \text{Maximum Luminance of 9points}) * 100$
 (See FIGURE 2 shown in Appendix).
- The color chromaticity coordinates specified in Table 4. shall be calculated from the spectral data measured with all pixels first in red, green, blue and white. Measurements shall be made at the center of the panel.
- The electro-optical response time measurements shall be made as FIGURE 3 shown in Appendix by switching the "data" input signal ON and OFF. The times needed for the luminance to change from 10% to 90% is Td, and 90% to 10% is Tr.
- Cross-Talk of one area of the LCD surface by another shall be measured by comparing the luminance (Y_A) of a 25mm diameter area, with all display pixels set to a gray level, to the luminance (Y_B) of that same area when any adjacent area is driven dark. (See FIGURE 4 shown in Appendix).

SPEC. NUMBER S864-6003	SPEC. TITLE HT185WX1-501 For B3 Product Specification _Rev.0	PAGE 9 OF 28
---------------------------	---	-----------------



PRODUCT GROUP

REV

ISSUE DATE

TFT MODULE

0

2011.1.13

5.0 INTERFACE CONNECTION.

5.1 Electrical Interface Connection

- CN11 Module Side Connector : UJU IS100-300-C23 or Equivalent
User Side Connector : JAE FI-X30H or Equivalent

Pin No	Symbol	Function	Remark
1	NC	No connection	
2	CE	No connection	internal use
3	CTL	No connection	internal use
4	GND	GND Ground	
5	RX0-	Negative LVDS differential data input. Channel 0	
6	RX0+	Positive LVDS differential data input. Channel 0	
7	GND	Ground	
8	RX1-	Negative LVDS differential data input. Channel 1	
9	RX1+	Positive LVDS differential data input. Channel 1	
10	GND	Ground	
11	RX2-	Negative LVDS differential data input. Channel 2	
12	RX2+	Positive LVDS differential data input. Channel 2	
13	GND	Ground	
14	RXCLK-	Negative LVDS differential clock input.	
15	RXCLK+	Positive LVDS differential clock input.	
16	GND	Ground	
17	RX3-	Negative LVDS differential data input. Channel 3	
18	RX3+	Positive LVDS differential data input. Channel 3	
19	GND	Ground	
20	NC	Not connection, this pin should be open.	
21	NC	Not connection, this pin should be open.	
22	NC	Not connection, this pin should be open.	
23	GND	Ground	
24	GND	Ground	
25	GND	Ground	
26	VCC	5V Power supply	
27	VCC		
28	VCC		
29	VCC		
30	VCC		

SPEC. NUMBER

SPEC. TITLE

PAGE

S864-6003

HT185WX1-501 For B3 Product Specification _Rev.0

10 OF 28

R2010-6053-O(3/3)

A4(210 X 297)



PRODUCT GROUP

REV

ISSUE DATE

TFT MODULE

0

2011.1.13

5.2 LVDS Interface (Tx; THC63LVDF83A or Equivalent)

5.2.1 LVDS Interface

	Input Signal	Transmitter		Interface		HT185WX1-501 (CN11)	Remark
		Pin No.	Pin No.	System (Tx)	TFT-LCD (Rx)	Pin No.	
L V D S	OR0	51	48 47	OUT0- OUT0+	RX00- RX00+	1 2	
	OR1	52					
	OR2	54					
	OR3	55					
	OR4	56					
	OR5	3	46 45	OUT1- OUT1+	RX01- RX01+	3 4	
	OG0	4					
	OG1	6					
	OG2	7					
	OG3	11					
	OG4	12	42 41	OUT2- OUT2+	RX02- RX02+	5 6	
	OG5	14					
	OB0	15					
	OB1	19					
	OB2	20					
	OB3	22	40 39	CLK OUT- CLK OUT+	RX0 CLK- RX0 CLK+	8 9	
	OB4	23					
	OB5	24	38 37	OUT3- OUT3+	RX03- RX03+	10 11	
	Hsync	27					
	Vsync	28					
DE	30						
MCLK	31						
OR6	50						
OR7	2						
OG6	8						
OG7	10						
OB6	16	25					
OB7	18						
RSVD	25						

SPEC. NUMBER

S864-6003

SPEC. TITLE


HT185WX1-501 For B3 Product Specification _Rev.0

PAGE

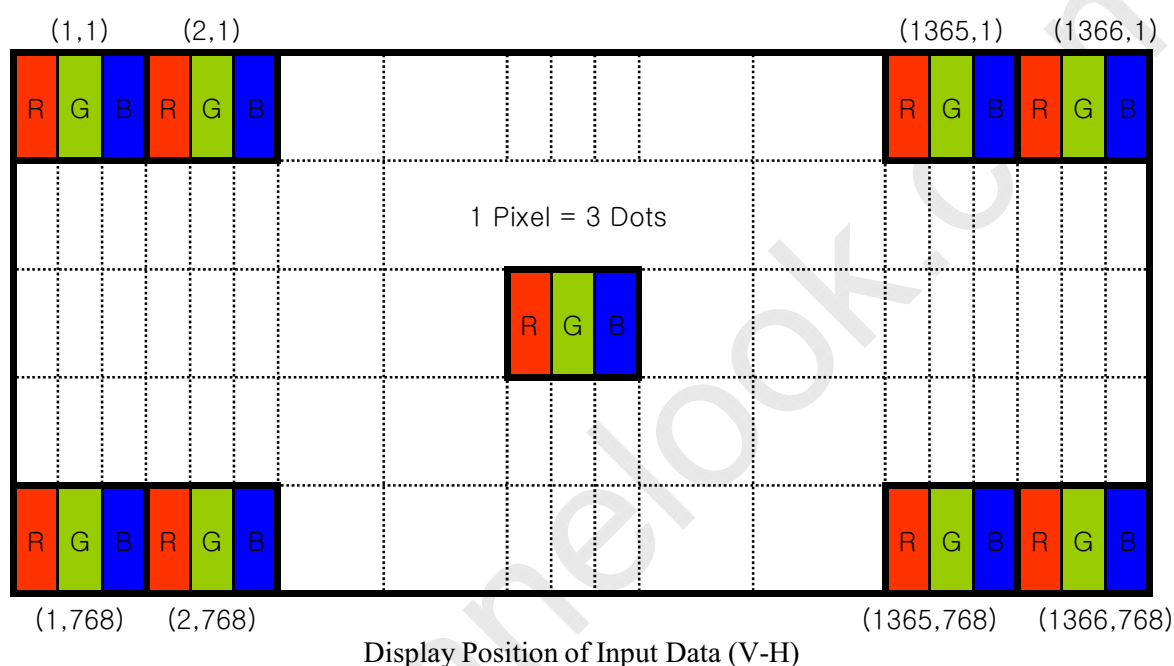
11 OF 28

R2010-6053-O(3/3)

A4(210 X 297)

 京东方 BOE	PRODUCT GROUP	REV	ISSUE DATE
	TFT MODULE	0	2011.1.13

5.3 Data Input Format



5.4 Back-light Interface Connection

- CN 21,22 Module Side Connector :35001HS-02L (Yeon Ho) or Equivalent
User Side Connector :35001HS-02L(Yeon Ho) or Equivalent

PIN NO.	INPUT	COLOR	FUNCTION
1	HOT	Pink or Blue	High Voltage
2	COLD	White or Black	Ground

SPEC. NUMBER S864-6003	SPEC. TITLE HT185WX1-501 For B3 Product Specification _Rev.0	PAGE 12 OF 28
R2010-6053-O(3/3)		A4(210 X 297)



PRODUCT GROUP

REV

ISSUE DATE

TFT MODULE

0

2011.1.13

6.0 SIGNAL TIMING SPECIFICATION

6.1 The HT185WX1-501 is operated by the DE only.

Item		Symbols	Min	Typ	Max	Unit
Clock	Frequency	1/Tc	50	78	95	MHz
	High Time	Tch	-	4/7Tc	-	
	Low Time	Tcl	-	4/7Tc	-	
Frame Period		Tv	778	806	888	lines
			50	60	75	Hz
			20	16.7	13.3	ms
Vertical Display Period		Tvd	-	768	-	lines
One line Scanning Period		Th	1446	1560	1936	clocks
Horizontal Display Period		Thd	-	1366	-	clocks

SPEC. NUMBER

S864-6003

SPEC. TITLE

HT185WX1-501 For B3 Product Specification _Rev.0

PAGE

13 OF 28

R2010-6053-O(3/3)

A4(210 X 297)



PRODUCT GROUP

REV

ISSUE DATE

TFT MODULE

0

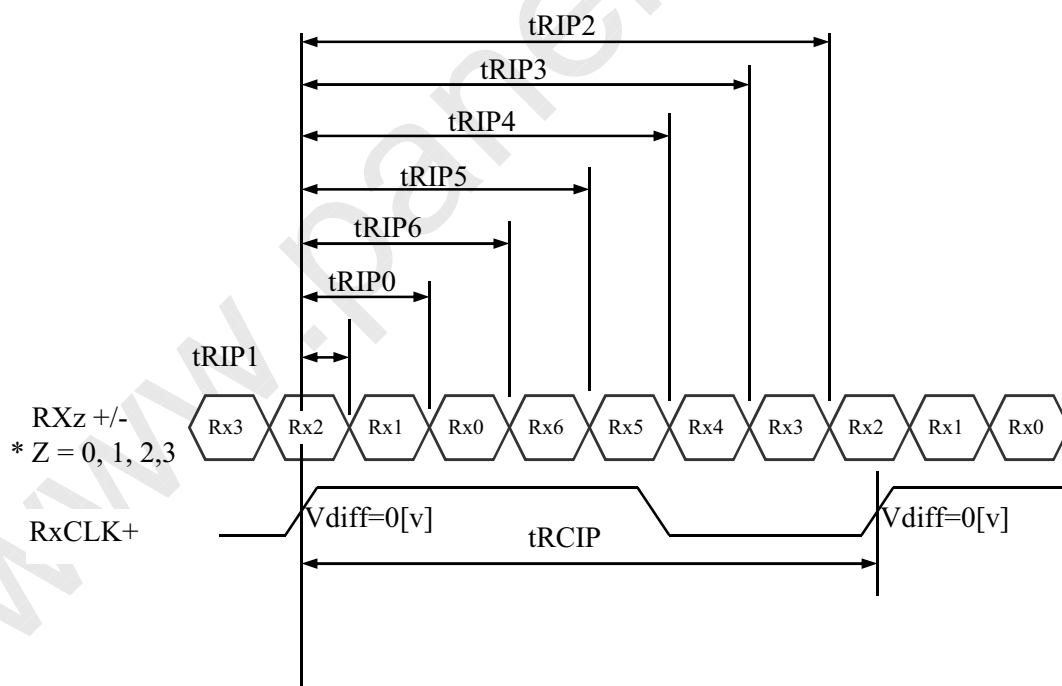
2011.1.13

6.2 LVDS Rx Interface Timing Parameter

The specification of the LVDS Rx interface timing parameter is shown in Table 4.

<Table 4. LVDS Rx Interface Timing Specification>

Item	Symbol	Min	Typ	Max	Unit	Remark
CLKIN Period	tRCIP	10.60	13.25	20.00	nsec	
Input Data 0	tRIP1	-0.4	0.0	+0.4	nsec	
Input Data 1	tRIP0	tRCIP/7-0.4	tRCIP/7	tRCIP/7+0.4	nsec	
Input Data 2	tRIP6	2 × tRCIP/7-0.4	2 × tRCIP/7	2 × tRCIP/7+0.4	nsec	
Input Data 3	tRIP5	3 × tRCIP/7-0.4	3 × tRCIP/7	3 × tRCIP/7+0.4	nsec	
Input Data 4	tRIP4	4 × tRCIP/7-0.4	4 × tRCIP/7	4 × tRCIP/7+0.4	nsec	
Input Data 5	tRIP3	5 × tRCIP/7-0.4	5 × tRCIP/7	5 × tRCIP/7+0.4	nsec	
Input Data 6	tRIP2	6 × tRCIP/7-0.4	6 × tRCIP/7	6 × tRCIP/7+0.4	nsec	



$$* V_{diff} = (RXz+) - (RXz-), \dots, (RXCLK+) - (RXCLK-)$$


SPEC. NUMBER
S864-6003

SPEC. TITLE
HT185WX1-501 For B3 Product Specification _Rev.0

PAGE
14 OF 28

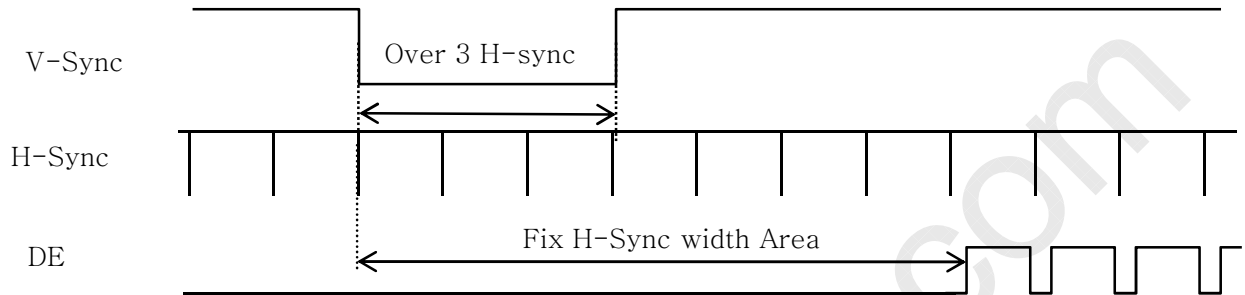
R2010-6053-O(3/3)

A4(210 X 297)

 京东方 BOE	PRODUCT GROUP	REV	ISSUE DATE
	TFT MODULE	0	2011.1.13

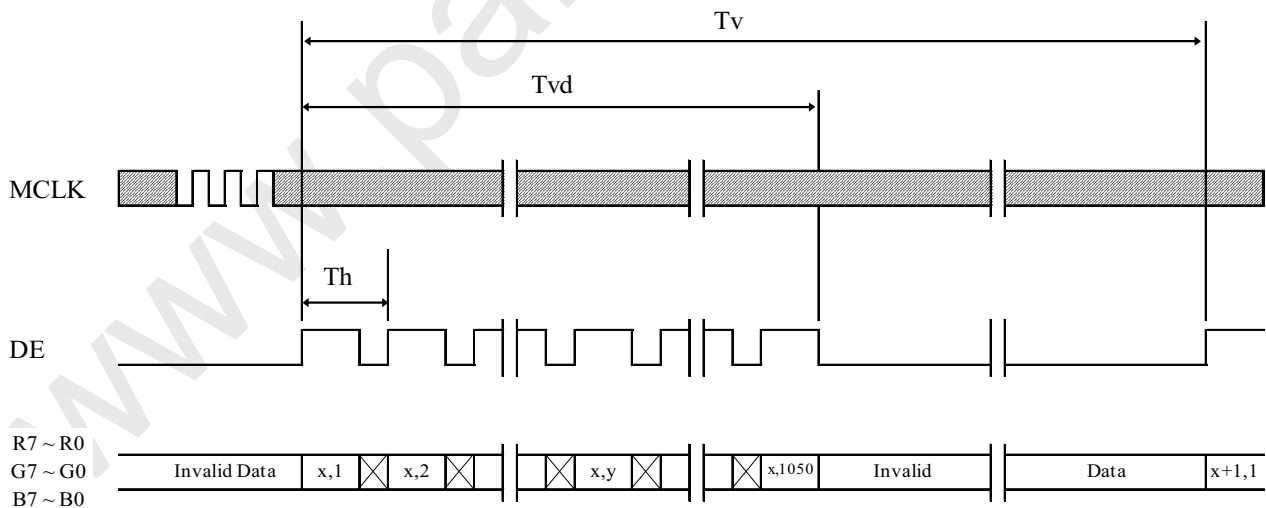
7.0 SIGNAL TIMING WAVEFORMS OF INTERFACE SIGNAL

7.1 Sync Timing Waveforms



- 1) Need over 3 H-sync during V-Sync Low
- 2) Fix H-Sync width from V-Sync falling edge to first rising edge

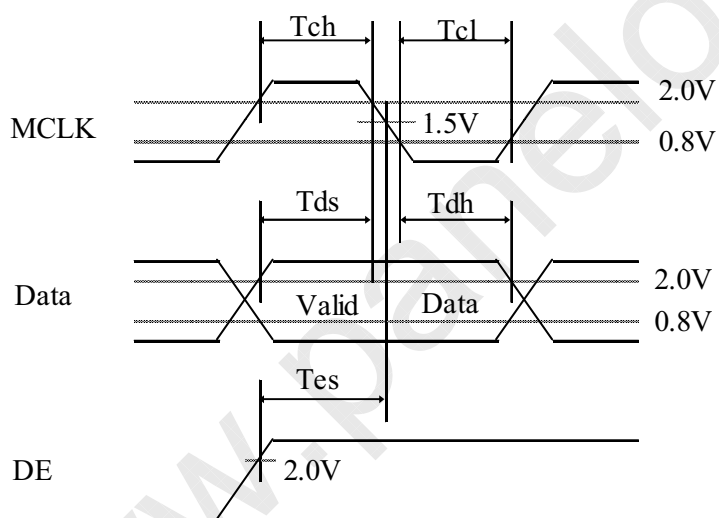
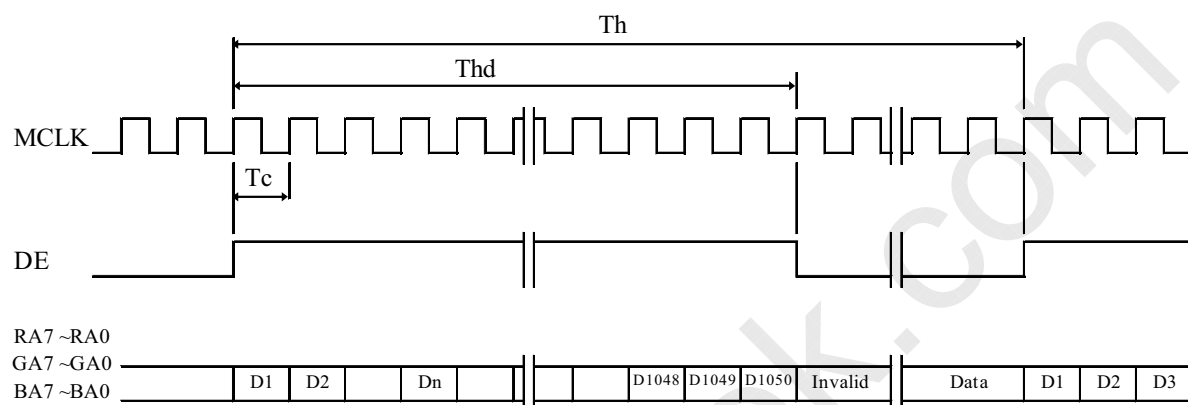
7.2 Vertical Timing Waveforms



SPEC. NUMBER S864-6003	SPEC. TITLE HT185WX1-501 For B3 Product Specification _Rev.0	PAGE 15 OF 28
---------------------------	---	------------------

	PRODUCT GROUP	REV	ISSUE DATE
	TFT MODULE	0	2011.1.13

7.3 Horizontal Timing Waveforms



SPEC. NUMBER S864-6003	SPEC. TITLE HT185WX1-501 For B3 Product Specification _Rev.0	PAGE 16 OF 28
---------------------------	---	------------------



PRODUCT GROUP

REV

ISSUE DATE

TFT MODULE

0

2011.1.13


8.0 INPUT SIGNALS, BASIC DISPLAY COLORS & GRAY SCALE OF COLORS

Color & Gray Scale		RED DATA								GREEN DATA								BLUE DATA							
		R7	R6	R5	R4	R3	R2	R1	R0	G7	G6	G5	G4	G3	G2	G1	G0	B7	B6	B5	B4	B3	B2	B1	B0
Basic Colors	Black	0	0	0	0	0	0	0	0	0	0	0	0	0	0	0	0	0	0	0	0	0	0	0	0
	Blue	0	0	0	0	0	0	0	0	0	0	0	0	0	0	0	0	1	1	1	1	1	1	1	1
	Green	0	0	0	0	0	0	0	0	1	1	1	1	1	1	1	1	0	0	0	0	0	0	0	0
	Cyan	0	0	0	0	0	0	0	0	1	1	1	1	1	1	1	1	1	1	1	1	1	1	1	1
	Red	1	1	1	1	1	1	1	1	0	0	0	0	0	0	0	0	0	0	0	0	0	0	0	0
	Magenta	1	1	1	1	1	1	1	1	0	0	0	0	0	0	0	0	1	1	1	1	1	1	1	1
	Yellow	1	1	1	1	1	1	1	1	1	1	1	1	1	1	1	1	0	0	0	0	0	0	0	0
	White	1	1	1	1	1	1	1	1	1	1	1	1	1	1	1	1	1	1	1	1	1	1	1	1
Gray Scale of RED	Black	0	0	0	0	0	0	0	0	0	0	0	0	0	0	0	0	0	0	0	0	0	0	0	
	△	0	0	0	0	0	0	1	0	0	0	0	0	0	0	0	0	0	0	0	0	0	0	0	
	Darker	0	0	0	0	0	0	1	0	0	0	0	0	0	0	0	0	0	0	0	0	0	0	0	
	△	↑								↑								↑							
	▽	↓								↓								↓							
	Brighter	1	1	1	1	1	1	0	1	0	0	0	0	0	0	0	0	0	0	0	0	0	0	0	0
	▽	1	1	1	1	1	1	1	0	0	0	0	0	0	0	0	0	0	0	0	0	0	0	0	0
	Red	1	1	1	1	1	1	1	1	0	0	0	0	0	0	0	0	0	0	0	0	0	0	0	0
Gray Scale of GREEN	Black	0	0	0	0	0	0	0	0	0	0	0	0	0	0	0	0	0	0	0	0	0	0	0	
	△	0	0	0	0	0	0	0	0	0	0	0	0	0	0	1	0	0	0	0	0	0	0	0	
	Darker	0	0	0	0	0	0	0	0	0	0	0	0	0	1	0	0	0	0	0	0	0	0	0	
	△	↑								↑								↑							
	▽	↓								↓								↓							
	Brighter	0	0	0	0	0	0	0	0	1	1	1	1	1	1	0	1	0	0	0	0	0	0	0	0
	▽	0	0	0	0	0	0	0	0	1	1	1	1	1	1	1	0	0	0	0	0	0	0	0	0
	Green	0	0	0	0	0	0	0	0	1	1	1	1	1	1	1	1	0	0	0	0	0	0	0	0
Gray Scale of BLUE	Black	0	0	0	0	0	0	0	0	0	0	0	0	0	0	0	0	0	0	0	0	0	0	0	
	△	0	0	0	0	0	0	0	0	0	0	0	0	0	0	0	0	0	0	0	0	0	0	1	
	Darker	0	0	0	0	0	0	0	0	0	0	0	0	0	0	0	0	0	0	0	0	0	0	1	
	△	↑								↑								↑							
	▽	↓								↓								↓							
	Brighter	0	0	0	0	0	0	0	0	0	0	0	0	0	0	0	0	1	1	1	1	1	1	0	1
	▽	0	0	0	0	0	0	0	0	0	0	0	0	0	0	0	0	1	1	1	1	1	1	1	0
	Blue	0	0	0	0	0	0	0	0	0	0	0	0	0	0	0	0	1	1	1	1	1	1	1	1
Gray Scale of WHITE	Black	0	0	0	0	0	0	0	0	0	0	0	0	0	0	0	0	0	0	0	0	0	0	0	
	△	0	0	0	0	0	0	1	0	0	0	0	0	0	0	1	0	0	0	0	0	0	0	1	
	Darker	0	0	0	0	0	0	1	0	0	0	0	0	0	1	0	0	0	0	0	0	0	1	0	
	△	↑								↑								↑							
	▽	↓								↓								↓							
	Brighter	1	1	1	1	1	1	0	1	1	1	1	1	1	1	0	1	1	1	1	1	1	1	0	1
	▽	1	1	1	1	1	1	1	0	1	1	1	1	1	1	1	0	1	1	1	1	1	1	1	0
	White	1	1	1	1	1	1	1	1	1	1	1	1	1	1	1	1	1	1	1	1	1	1	1	1

SPEC. NUMBER
S864-6003

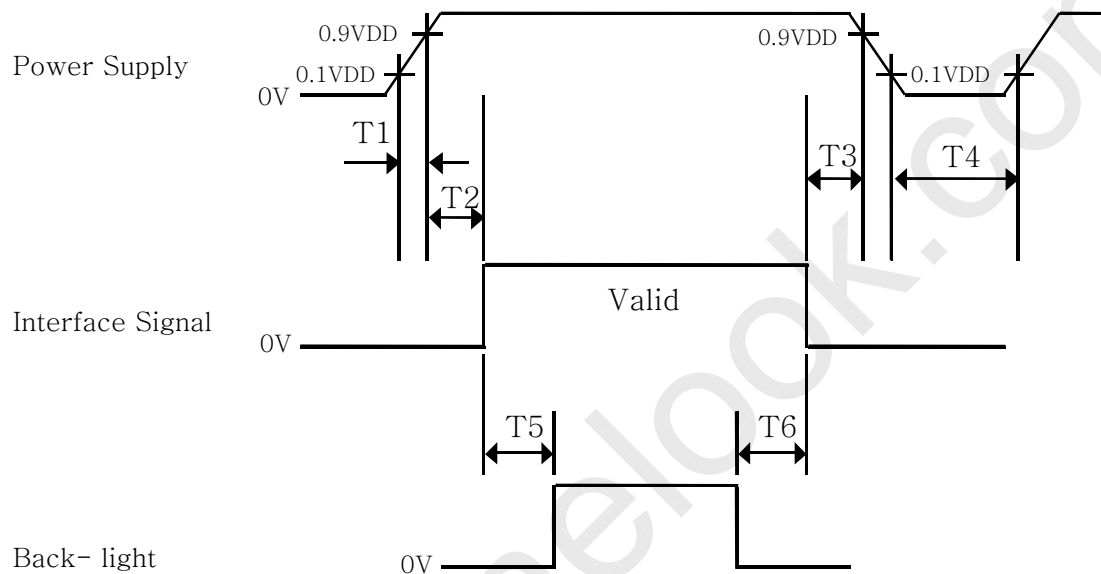
SPEC. TITLE
HT185WX1-501 For B3 Product Specification _Rev.0

PAGE
17 OF 28

 京东方 BOE	PRODUCT GROUP	REV	ISSUE DATE
	TFT MODULE	0	2011.1.13

9.0 POWER SEQUENCE

To prevent a latch-up or DC operation of the LCD module, the power on/off sequence shall be as shown in below




- $0.5 \text{ ms} \leq T1 \leq 10 \text{ ms}$
- $0 \leq T2 \leq 50 \text{ ms}$
- $0 \leq T3 \leq 50 \text{ ms}$
- $1 \text{ sec} \leq T4$
- $200 \text{ ms} \leq T5$
- $200 \text{ ms} \leq T6$

Notes:

1. When the power supply VDD is 0V, keep the level of input signals on the low or keep high impedance.
2. Do not keep the interface signal high impedance when power is on.
3. Back Light must be turn on after power for logic and interface signal are valid.

SPEC. NUMBER S864-6003	SPEC. TITLE HT185WX1-501 For B3 Product Specification _Rev.0	PAGE 18 OF 28
---------------------------	---	------------------

 京东方 BOE	PRODUCT GROUP	REV	ISSUE DATE
	TFT MODULE	0	2011.1.13

10.0 MECHANICAL CHARACTERISTICS

10.1 Dimensional Requirements

FIGURE 6 (located in Appendix) shows mechanical outlines for the model HT185WX1-501. Other parameters are shown in Table 5.

<Table 5. Dimensional Parameters>

Parameter	Specification	Unit
Dimensional outline	430.4 × 254.6 × 12.6	mm
Weight	1700 (max.)	gram
Active area	409.8(H) × 230.4(V)	mm
Pixel pitch	0.3(H) × 0.3(V)	mm
Number of pixels	1366(H) × 768(V) (1 pixel = R + G + B dots)	pixels
Back-light	Top / Bottom edge side 2-CCFL type	

10.2 Mounting

See FIGURE 5. (shown in Appendix)

10.3 Anti-Glare and Polarizer Hardness.

The surface of the LCD has an anti-glare coating to minimize reflection and a coating to reduce scratching.

10.4 Light Leakage

There shall not be visible light from the back-lighting system around the edges of the screen as seen from a distance 50cm from the screen with an overhead light level of 350lux.

SPEC. NUMBER S864-6003	SPEC. TITLE HT185WX1-501 For B3 Product Specification _Rev.0	PAGE 19 OF 28
---------------------------	---	------------------



京东方
BOE

PRODUCT GROUP

REV

ISSUE DATE

TFT MODULE

0

2011.1.13

11.0 RELIABILITY TEST

The Reliability test items and its conditions are shown in below.

<Table 6. Reliability Test Parameters >

No	Test Items	Conditions	
1	High temperature storage test	Ta = 60 °C, 240 hrs	
2	Low temperature storage test	Ta = -20 °C, 240 hrs	
3	High temperature & high humidity operation test	Ta = 50 °C, 80%RH, 240hrs	
4	High temperature operation test	Ta = 50 °C, 240hrs	
5	Low temperature operation test	Ta = 0 °C, 240hrs	
6	Thermal shock	Ta = -20 °C ↔ 60 °C (0.5 hr), 100 cycle	
7	Vibration test (non-operating)	Frequency	10 ~ 300 Hz, Sweep rate 30 min
		Gravity / AMP	1.5 G
		Period	X, Y, Z 30 min
8	Shock test (non-operating)	Gravity	50G
		Pulse width	11msec, sine wave
		Direction	± X, ± Y, ± Z Once for each
9	Electro-static discharge test (non-operating)	Air : 150 pF, 330Ω, 15 KV Contact : 150 pF, 330Ω, 8 KV	
10	Altitude test	Operating: 0 to 16400ft, 0 to 40°	
		Non Operating: 0 to 40000ft, -20 to 40°	

SPEC. NUMBER

S864-6003

SPEC. TITLE


HT185WX1-501 For B3 Product Specification _Rev.0

PAGE

20 OF 28

R2010-6053-O(3/3)

A4(210 X 297)


 京东方 BOE	PRODUCT GROUP	REV	ISSUE DATE
	TFT MODULE	0	2011.1.13

12.0 HANDLING & CAUTIONS

- (1) Cautions when taking out the module
 - Pick the pouch only, when taking out module from a shipping package.
- (2) Cautions for handling the module
 - As the electrostatic discharges may break the LCD module, handle the LCD module with care. Peel a protection sheet off from the LCD panel surface as slowly as possible.
 - As the LCD panel and back - light element are made from fragile glass material, impulse and pressure to the LCD module should be avoided.
 - As the surface of the polarizer is very soft and easily scratched, use a soft dry cloth without chemicals for cleaning.
 - Do not pull the interface connector in or out while the LCD module is operating.
 - Put the module display side down on a flat horizontal plane.
 - Handle connectors and cables with care.
- (3) Cautions for the operation
 - When the module is operating, do not lose CLK, ENAB signals. If any one of these signals is lost, the LCD panel would be damaged.
 - Obey the supply voltage sequence. If wrong sequence is applied, the module would be damaged.
- (4) Cautions for the atmosphere
 - Dew drop atmosphere should be avoided.
 - Do not store and/or operate the LCD module in a high temperature and/or humidity atmosphere. Storage in an electro-conductive polymer packing pouch and under relatively low temperature atmosphere is recommended.
- (5) Cautions for the module characteristics
 - Do not apply fixed pattern data signal to the LCD module at product aging.
 - Applying fixed pattern for a long time may cause image sticking.
- (6) Other cautions
 - Do not disassemble and/or re-assemble LCD module.
 - Do not re-adjust variable resistor or switch etc.
 - When returning the module for repair or etc., Please pack the module not to be broken. We recommend to use the original shipping packages.

SPEC. NUMBER S864-6003	SPEC. TITLE HT185WX1-501 For B3 Product Specification _Rev.0	PAGE 21 OF 28
---------------------------	---	------------------



 京东方 BOE	PRODUCT GROUP	REV	ISSUE DATE
	TFT MODULE	0	2011.1.13

13.0 PRODUCT SERIAL NUMBER



HT185WX1-501









B3
XXXXXXXXXXXXXXXXXXXX

MADE IN CHINA



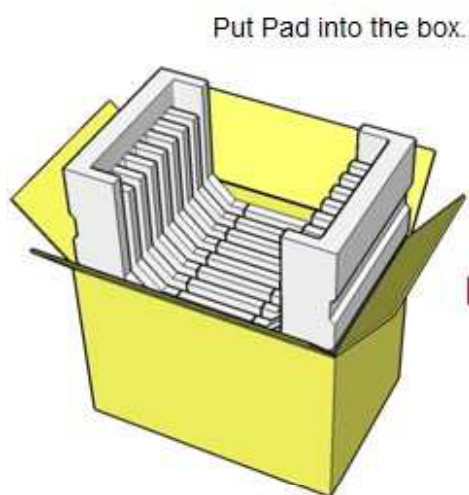
- | | |
|---|---|
| <ul style="list-style-type: none"> 1. Control Number 2. Rank / Grade 3. Line Classification 4. Year (2001 : 01, 2002 : 02, ...) | <ul style="list-style-type: none"> 5. Month (1,2,3, ... , 9, X, Y, Z) 6. Internal Use 7. Serial Number |
|---|---|

SPEC. NUMBER	SPEC. TITLE	PAGE
S864-6003	HT185WX1-501 For B3 Product Specification _Rev.0	22 OF 28

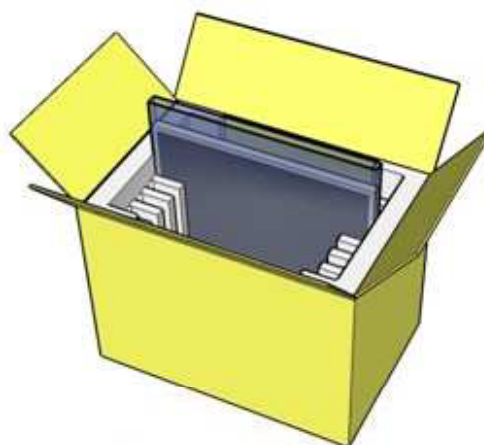
 京东方 BOE	PRODUCT GROUP	REV	ISSUE DATE
	TFT MODULE	0	2011.1.13

14.0 Packing

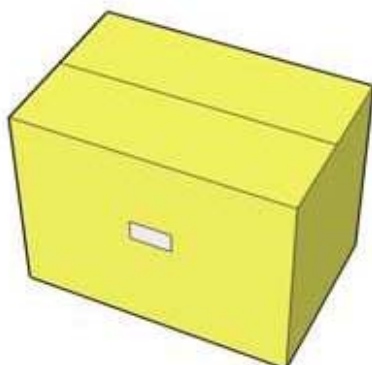
14.1 Packing Order



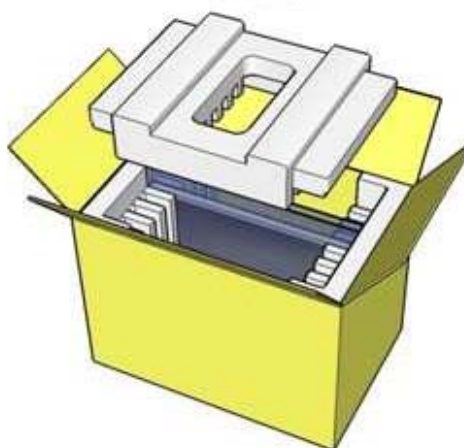
As shown in the figure, place the modules bundled by packing bag in the box.



After sealing the box, attach Packing Label on the attach position sign area of the box.




Place a cover on the top of the box.



SPEC. NUMBER S864-6003	SPEC. TITLE HT185WX1-501 For B3 Product Specification _Rev.0	PAGE 23 OF 28
---------------------------	---	------------------



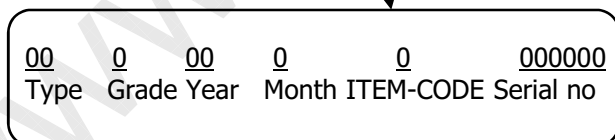
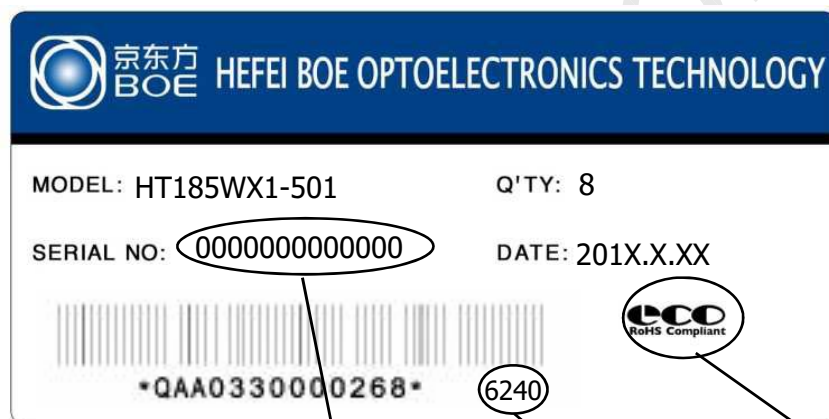
 京东方 BOE	PRODUCT GROUP	REV	ISSUE DATE
	TFT MODULE	0	2011.1.13

14.2 Packing Note

- Box Dimension : 346mm(W) × 521mm(L) × 403mm(H)
- Package Quantity in one Box : 8pcs

14.3 Box label


- Label Size : 108 mm (L) × 56 mm (W)
- Contents
 Model : HT185WX1
 Q`ty : Module Q`ty in one box
 Serial No. : Box Serial No. See next page for detail description.
 Date : Packing Date
 FG Code : FG Code of Product



FG CODE

RoHS Mark

SPEC. NUMBER S864-6003	SPEC. TITLE HT185WX1-501 For B3 Product Specification _Rev.0	PAGE 24 OF 28
---------------------------	---	------------------

 京东方 BOE	PRODUCT GROUP	REV	ISSUE DATE
	TFT MODULE	0	2011.1.13

15.0 APPENDIX

Figure 1. Measurement Set Up

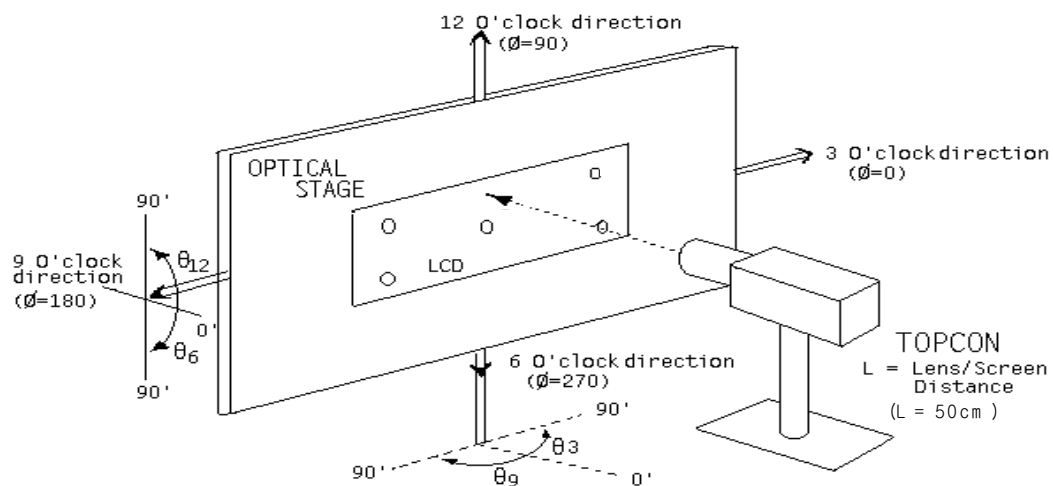
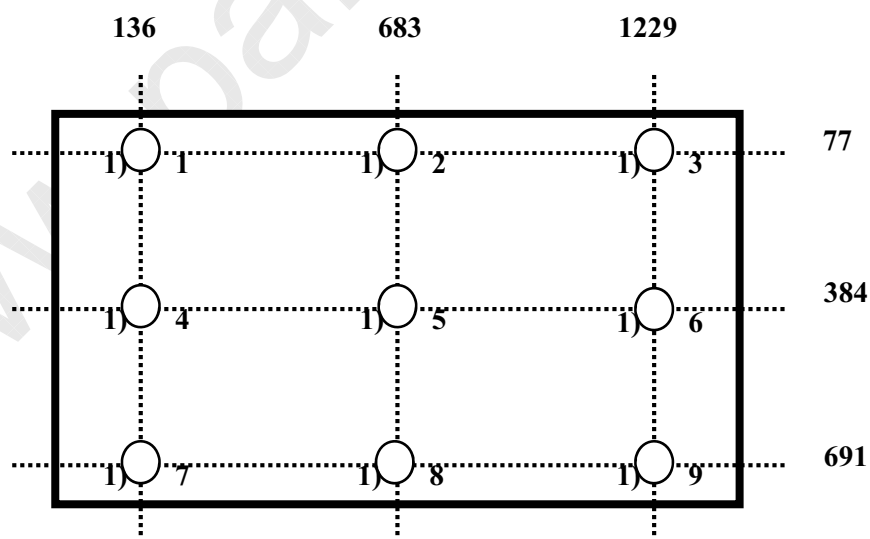


Figure 2. White Luminance and Uniformity Measurement Locations (9 points)



SPEC. NUMBER S864-6003	SPEC. TITLE HT185WX1-501 For B3 Product Specification _Rev.0	PAGE 25 OF 28
---------------------------	---	------------------


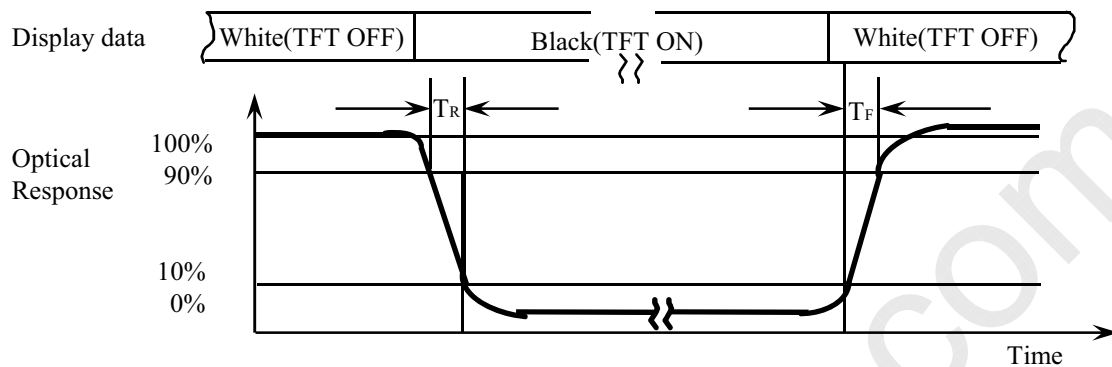
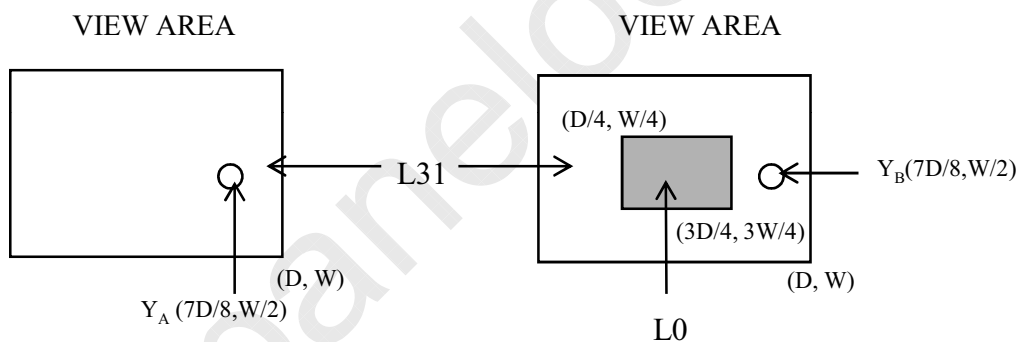
 京东方 BOE	PRODUCT GROUP	REV	ISSUE DATE
	TFT MODULE	0	2011.1.13

Figure 3. Response Time Testing

Figure 4. Cross Modulation Test Description


$$\text{Cross-Talk (\%)} = \left| \frac{Y_B - Y_A}{Y_A} \right| \times 100$$

Where: Y_A = Initial luminance of measured area (cd/m^2)

Y_B = Subsequent luminance of measured area (cd/m^2)

The location measured will be exactly the same in both patterns

SPEC. NUMBER S864-6003	SPEC. TITLE HT185WX1-501 For B3 Product Specification _Rev.0	PAGE 26 OF 28
---------------------------	---	------------------


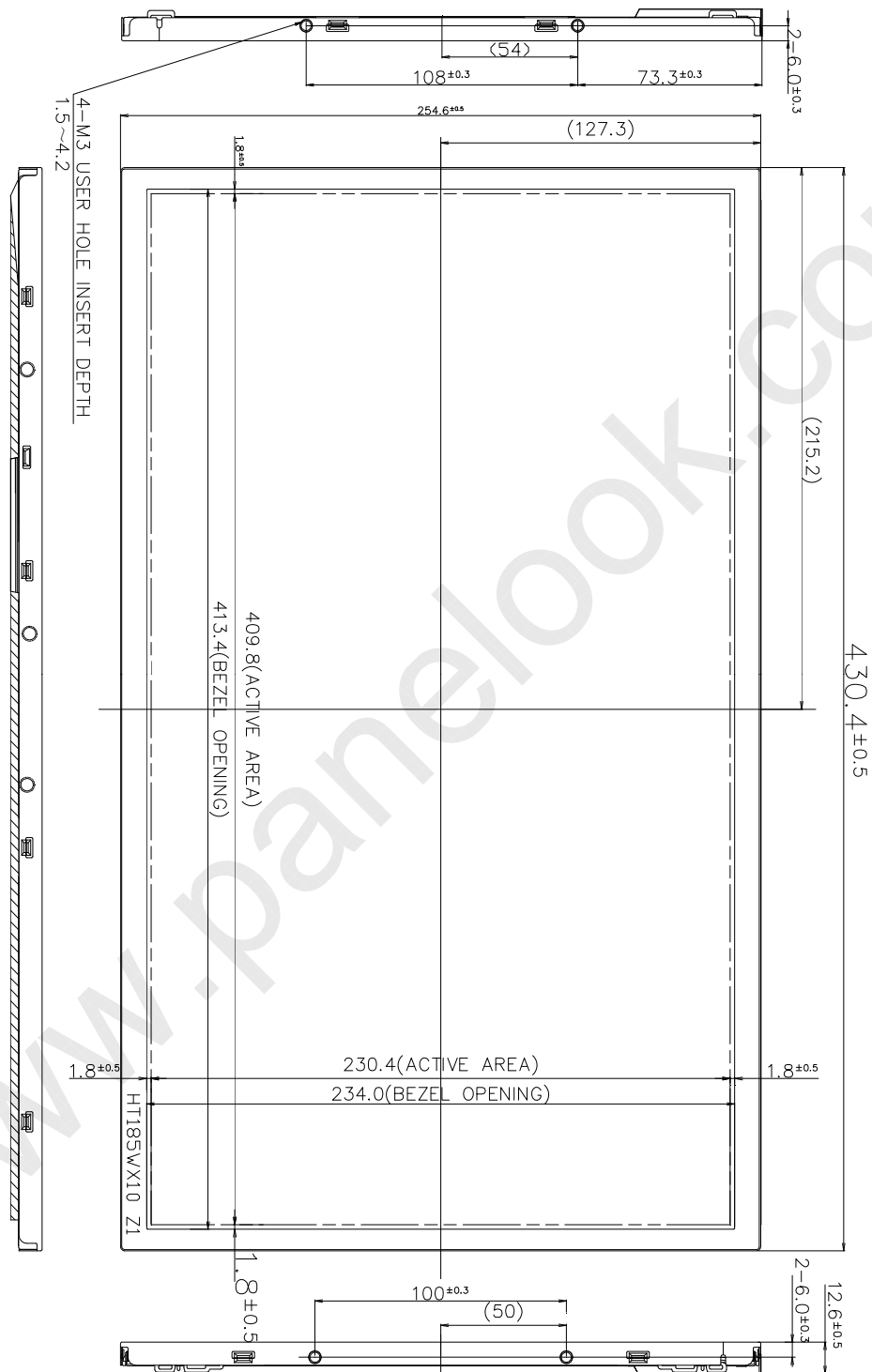
 京东方 BOE	PRODUCT GROUP	REV	ISSUE DATE
	TFT MODULE	0	2011.1.13

Figure 5. TFT-LCD Module Outline Dimensions (Front view)


SPEC. NUMBER S864-6003	SPEC. TITLE HT185WX1-501 For B3 Product Specification _Rev.0	PAGE 27 OF 28
---------------------------	---	------------------


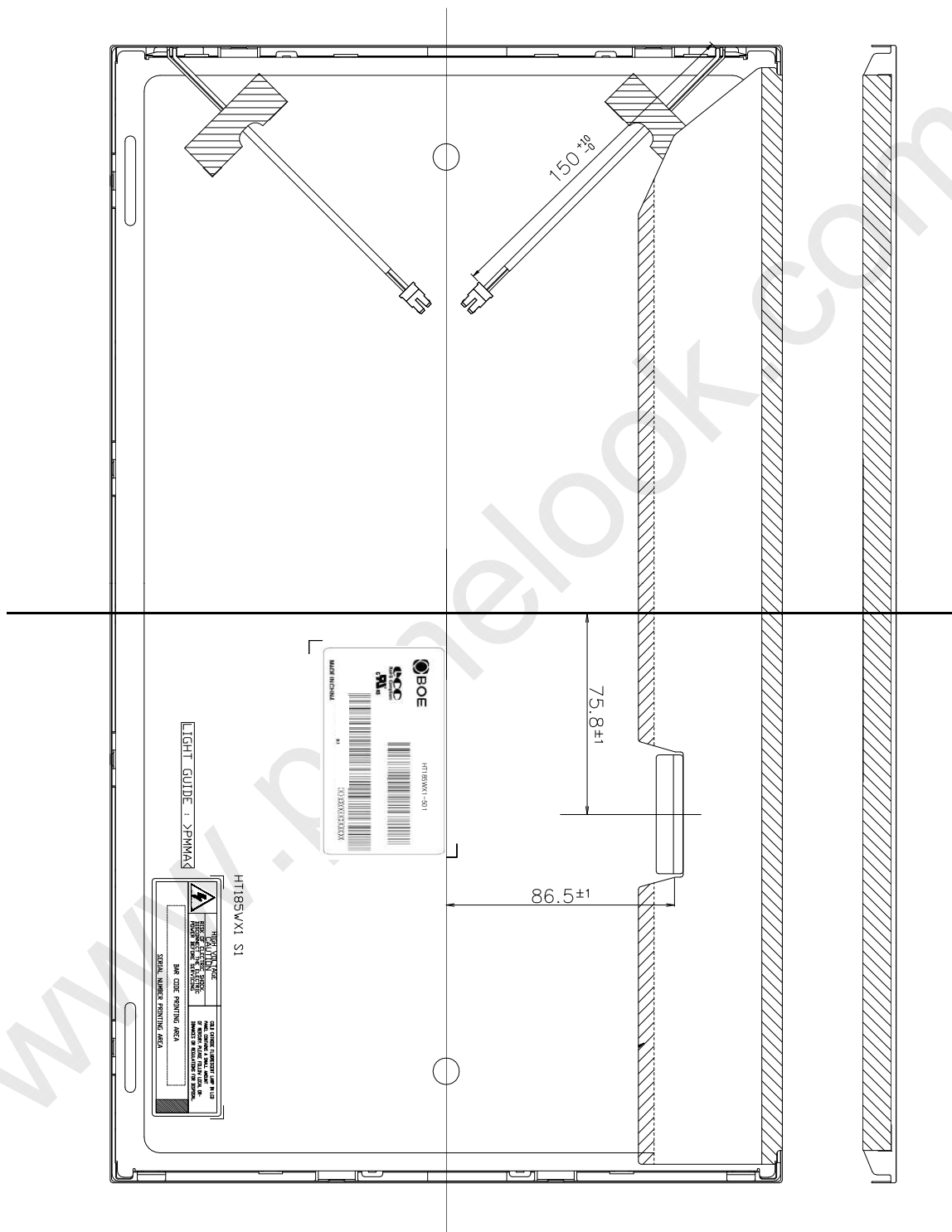
 京东方 BOE	PRODUCT GROUP	REV	ISSUE DATE
	TFT MODULE	0	2011.1.13

Figure 6. TFT-LCD Module Outline Dimensions (Rear view)


SPEC. NUMBER S864-6003	SPEC. TITLE HT185WX1-501 For B3 Product Specification _Rev.0	PAGE 28 OF 28
---------------------------	---	------------------