

TITLE : HV320WHB-N81
Preliminary Product Specification
Rev. P2

Chongqing BOE Optoelectronics Technology Co., Ltd

SPEC. NUMBER
S871-C003

PRODUCT GROUP
TFT-LCD

Rev. P2

ISSUE DATE
2015.06.15

PAGE
1 OF 24

REVISION HISTORY

 preliminary specification Final specification

Revision No.	Page	Description of changes	Date	Prepared
P0	23	Initial Release	2015.04.22	Zhang Zhi
P1	7	Add Flicker Pattern	2015.05.11	Zhang Zhi
	16	miniLVDS Eye Diagram	2015.05.11	Zhang Zhi
	24	CNT location change	2015.05.11	Zhang Zhi
P2	7	Change Voltage & Ripple Spec	2015.06.15	Zhang Zhi
	13	Timing benchmark update	2015.06.15	Zhang Zhi

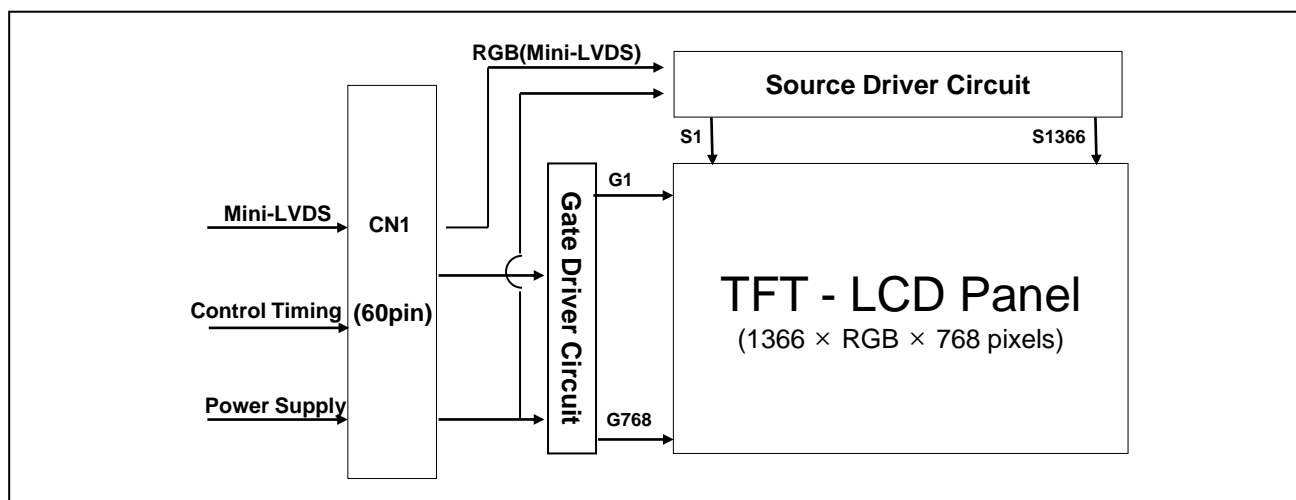
Contents

No.	Item	Page
1.0	General Description	P4
2.0	Absolute Maximum Ratings	P6
3.0	Electrical Specifications	P7
4.0	Optical Specifications	P8
5.0	Interface Connection	P10
6.0	Signal Timing Specifications	P12
7.0	Mechanical Characteristics	P17
8.0	Reliability Test	P18
9.0	Handling& Cautions	P19
10.0	Product Serial Number	P20
11.0	Packing	P21
12.0	Appendix	P23

1.0 GENERAL DESCRIPTION

1.1 Introduction

HV320WHB-N81 is a color active matrix TFT LCD open cell using amorphous silicon TFT's (Thin Film Transistors) as an active switching devices. This open cell has a 31.51 inch diagonally measured active area with HD resolutions (1366 horizontal by 768 vertical pixel array). Each pixel is divided into RED, GREEN, BLUE dots which are arranged in vertical stripe and this open cell can display 16.7M colors. The TFT-LCD panel used for this open cell is adapted for a low reflection and higher color type.



1.2 Features

- High-speed response
- Low color shift image quality
- 8-bit color depth, display 16.7M colors
- High luminance and contrast ratio, low reflection and wide viewing angle
- ADS technology is applied for high display quality
- RoHS compliant

1.3 Application

- Home Alone Multimedia TFT-LCD TV
- Display Terminals for Control System
- High Definition TV(HD TV)
- TV application Products

1.4 General Specification

< Table 1. General Specifications >

Parameter	Specification	Unit	Remark
Active area	697.685(H) × 392.256(V)	mm	
Number of pixels	1366(H) × 768(V)	pixels	
Pixel pitch	510.75(H) × RGB × 510.75(V)	μm	
Pixel arrangement	Pixels RGB Vertical stripe		
Display colors	16.7M(8bits-true)	colors	
Display mode	Transmission mode, Normally Black		
Open Cell Transmittance	6.2 (typ.)	%	At center point with BOE BLU
Weight	867 (typ.)	gram	
Power Consumption	4 (typ.)	Watt	
Surface Treatment	Front Polarizer : Haze 1%, 3H, Semi-glare or Anti-glare treatment Bottom Polarizer : Clear		

2.0 ABSOLUTE MAXIMUM RATINGS

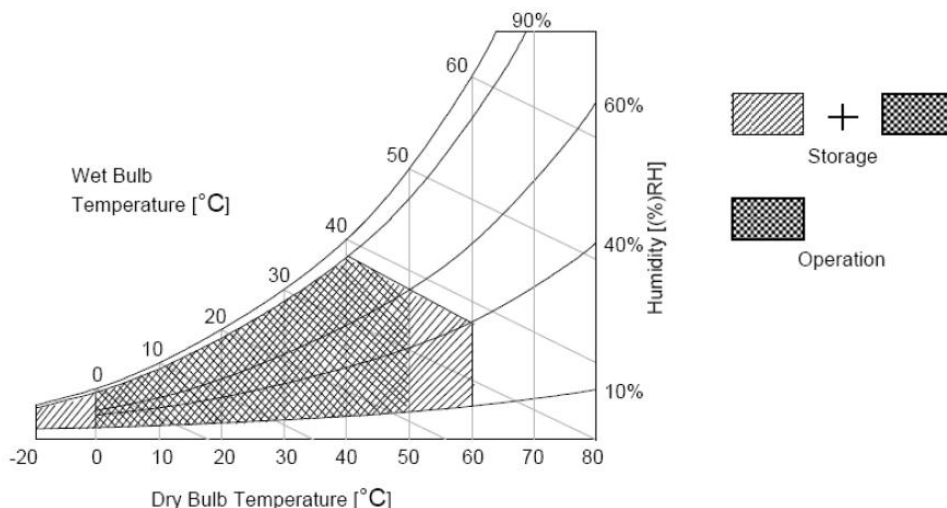
The followings are maximum values which, if exceed, may cause faulty operation or damage to the unit. The operational and non-operational maximum voltage and current values are listed in Table 2.

< Table 2. Open Cell Electrical Specifications >

[VSS=GND=0V]

Parameter	Symbol	Min.	Max.	Unit	Remark
Operating Temperature	T _{OP}	0	+50	°C	Note 1
	T _{SUR}	0	+60	°C	
Storage Temperature	T _{ST}	-20	+60	°C	
Operating Ambient Humidity	Hop	10	90	%RH	
Storage Humidity	Hst	10	90	%RH	

Note 1 : Temperature and relative humidity range are shown in the figure below.
Wet bulb temperature should be 39 °C max. and no condensation of water.



3.0 ELECTRICAL SPECIFICATIONS

< Table 3. Open Cell Electrical Specifications >

[Ta =25 ± 2 °C]

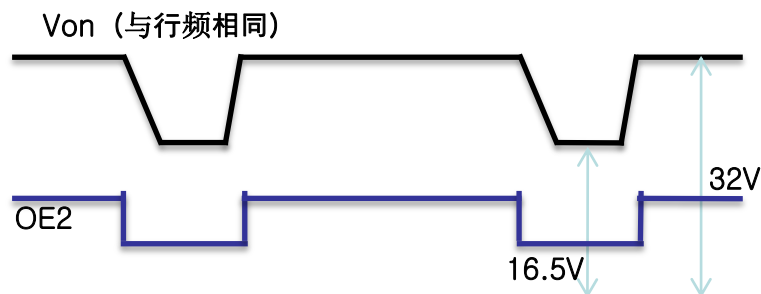
Characteristics	Symbol	Min	Typ	Max	Unit
DC Supply Voltage	VDDD	3.0	3.3	3.6	V
DC Supply Voltage	Voff	-8.5	-8.0	-7.5	V
DC Supply Voltage	Von	25	27	29	V
DC Supply Voltage	VREF	15.8	16.1	16.4	V
DC Supply Voltage	VCOM	7	7.5	8	V
DC Supply Voltage	VMID	7.6	7.8	8.0	V
DC Supply Voltage	AVDD	16	16.4	16.8	V

Characteristics	Symbol	Min	Typ	Max	Unit
DC Supply Voltage	DVDD	80			mA
DC Supply Voltage	Voff	10			mA
DC Supply Voltage	Von	15			mA
DC Supply Voltage	VREF	25			μA
DC Supply Voltage	VCOM	60			mA
DC Supply Voltage	VMID	50			mA
DC Supply Voltage	AVDD	250			mA

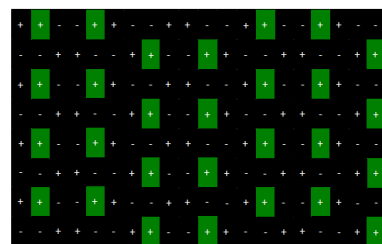
Note: Vcom short-circuit current 400mA

Max Noise

Characteristics	Symbol	Max	Unit
DC Supply Voltage	DVDD	50	mV
DC Supply Voltage	Voff	150	mV
DC Supply Voltage	Von	100	mV
DC Supply Voltage	VREF	100	mV
DC Supply Voltage	VCOM	50	mV
DC Supply Voltage	VMID	100	mV
DC Supply Voltage	AVDD	200	mV



Flicker Test Pattern



4.0 OPTICAL SPECIFICATION

The test of optical specifications shall be measured in a dark room (ambient luminance \leq 1 lux and temperature $=25\pm 2^{\circ}\text{C}$) with the equipment of Luminance meter system (Goniometer system and PR730) and test unit shall be located at an approximate distance 50cm from the LCD surface at a viewing angle of θ and Φ equal to 0° . We refer to $\theta_{\Phi=0}$ ($=\theta_3$) as the 3 o'clock direction (the "right"), $\theta_{\Phi=90}$ ($=\theta_{12}$) as the 12 o'clock direction ("upward"), $\theta_{\Phi=180}$ ($=\theta_9$) as the 9 o'clock direction ("left") and $\theta_{\Phi=270}$ ($=\theta_6$) as the 6 o'clock direction ("bottom"). While scanning θ and/or Φ , the center of the measuring spot on the Display surface shall stay fixed. The measurement shall be executed after 30 minutes warm-up period. VDD shall be 12.0V \pm 10% at 25°C . Optimum viewing angle direction is 6 'clock.

< Table 4. Optical Table >

[VDD = 12.0V, Frame rate = 60Hz, Ta = $25\pm 2^{\circ}\text{C}$]

Parameter		Symbol	Condition	Min	Typ	Max	Unit	Remark
Viewing Angle	Horizontal	Θ_3	CR > 10		89		Deg.	Note 1
		Θ_9			89		Deg.	
	Vertical	Θ_{12}			89		Deg.	
		Θ_6			89		Deg.	
Contrast ratio		CR		900:1	1200:1	-		Note 2
Reproduction of color	White	W_x	$\Theta = 0^{\circ}$ (Center) Normal Viewing Angle With BOE Module	TYP. - 0.03	0.290	TYP. + 0.03		Note 3 (O/C在C 光下模拟 值)
		W_y			0.328			
	Red	R_x			0.655			
		R_y			0.325			
	Green	G_x			0.265			
		G_y			0.584			
	Blue	B_x			0.141			
		B_y			0.132			
Response Time	G to G	T_g		-	8	10	ms	Note 4
Gamma Scale				2.0	2.2	2.4		
Cell Transmittance					6.2		%	Note 5

Note :

1. Viewing angle is the angle at which the contrast ratio is greater than 10. The viewing are determined for the horizontal or 3, 9 o'clock direction and the vertical or 6, 12 o'clock direction with respect to the optical axis which is normal to the LCD surface.
2. Contrast measurements shall be made at viewing angle of $\theta = 0^\circ$ and at the center of the LCD surface. Luminance shall be measured with all pixels in the view field set first to white, then to the dark (black) state. (See Figure 1 shown in Appendix) Luminance Contrast Ratio (CR) is defined mathematically.

$$CR = \frac{\text{Luminance when displaying a white raster}}{\text{Luminance when displaying a black raster}}$$

3. The color chromaticity coordinates specified in Table 9. shall be calculated from the spectral data measured with all pixels first in red, green, blue and white. Measurements shall be made at the center of the panel.
4. Response time T_g is the average time required for display transition by switching the input signal as below table and is based on Frame rate $f_V = 60\text{Hz}$ to optimize. Each time in below table is defined as Figure 2 and shall be measured by switching the input signal for "any level of gray(bright)" and "any level of gray(dark)".

Measured Response Time	Target																
	0	15	31	47	63	79	95	111	127	143	159	175	191	207	223	239	255
0																	
15																	
31																	
47																	
63																	
79																	
95																	
111																	
127																	
143																	
159																	
175																	
191																	
207																	
223																	
239																	
255																	

5. Definition of Transmittance (T%) :

Module is with white(L255) signal input

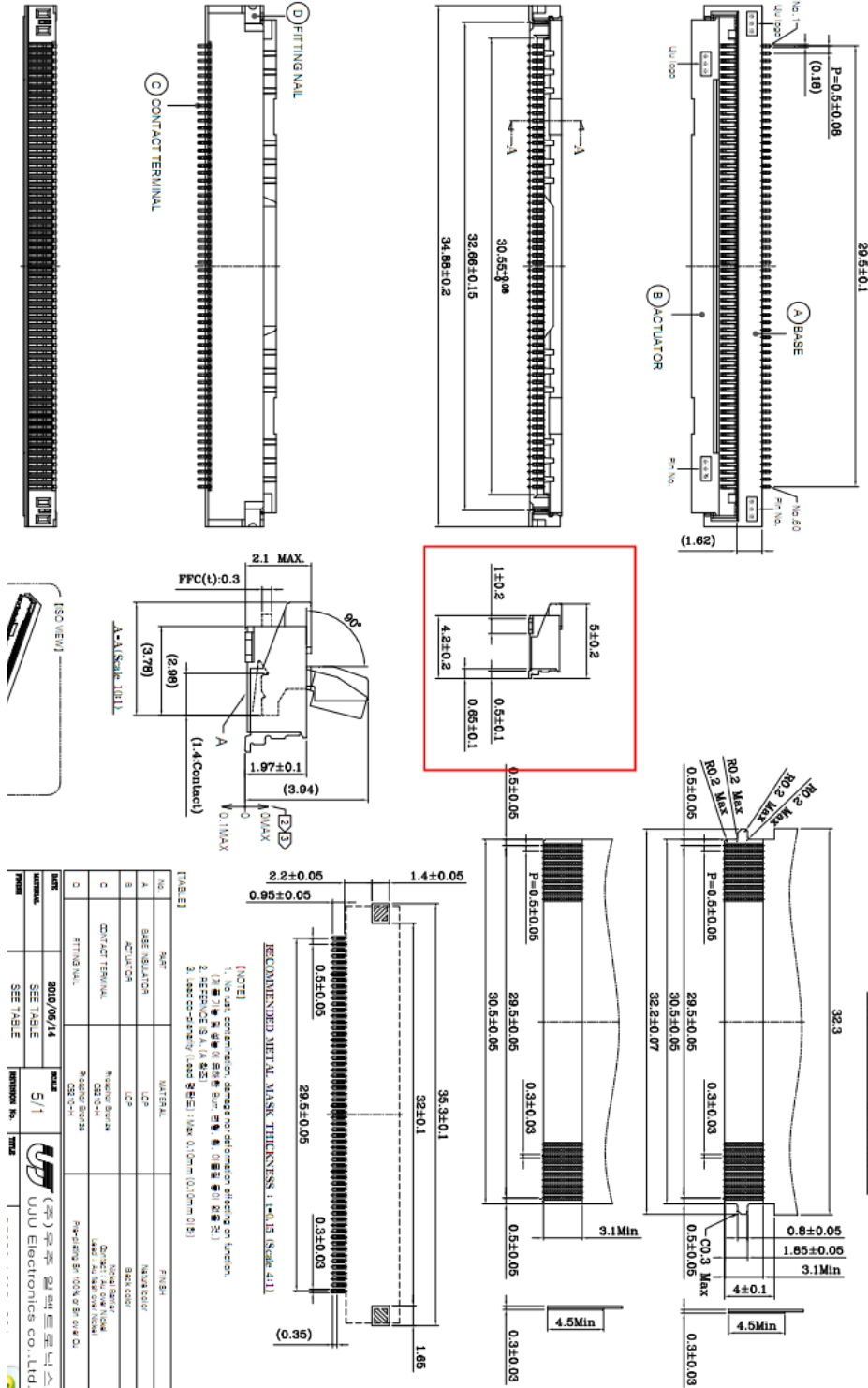
$$\text{Transmittance} = \frac{\text{Luminance of LCD Module}}{\text{Luminance of BLU}} \times 100 \%$$

5.0 INTERFACE CONNECTION.

5.1 Connector

NO.	BOE PINMAP	Description
1	CPV	Gate driver clock input
2	NC	NC
3	STV	Gate driver vertical start pulse
4	OE1	Gate driver output enable signal
5	XAO	When XAO_L/R goes low, all outputs are fixed to VON. XAO_L/R signal has priority over OE_L/R
6	NC	NC
7	GND	GND
8 , 9	DVDD	Power supply for digital circuit.
10	GND	GND
11	VOFF	Negative power supply for gate
12	GND	GND
13 , 14	VON	Positive power supply for gate
15	GREF	Power supply for GAMMA reference
16,17	VCOM	common electrode for LCD
18	NC	NC
19	TP	Source driver latch signal
20	POL	Source driver polarity inversion signal
21	PAIRMODE	Selects mini-LVDS input mode : H:6-Pair Mode. (default) L:3-Pair Mode(Suggest "H" for 6 pair).
22	VMID	Power supply for analog circuit VMID=1/2AVDD
23	VMID	Power supply for analog circuit VMID=1/2AVDD
24~26	AVDD	Power supply for analog circuit
27	GND	GND
28~41	NC	NC
42	GND	GND
43	GND	GND
44	mLV5N	Differential inputs (mini-LVDS) for 8-bit RGB data and control signal
45	mLV5P	Differential inputs (mini-LVDS) for 8-bit RGB data and control signal
46	mLV4N	Differential inputs (mini-LVDS) for 8-bit RGB data and control signal
47	mLV4P	Differential inputs (mini-LVDS) for 8-bit RGB data and control signal
48	mLV3N	Differential inputs (mini-LVDS) for 8-bit RGB data and control signal
49	mLV3P	Differential inputs (mini-LVDS) for 8-bit RGB data and control signal
50	GND	GND
51	mLVCLKN	Differential inputs (mini-LVDS) for 8-bit RGB data and control signal
52	mLVCLKP	Differential inputs (mini-LVDS) for 8-bit RGB data and control signal
53	GND	GND
54	mLV2N	Differential inputs (mini-LVDS) for 8-bit RGB data and control signal
55	mLV2P	Differential inputs (mini-LVDS) for 8-bit RGB data and control signal
56	mLV1N	Differential inputs (mini-LVDS) for 8-bit RGB data and control signal
57	mLV1P	Differential inputs (mini-LVDS) for 8-bit RGB data and control signal
58	mLV0N	Differential inputs (mini-LVDS) for 8-bit RGB data and control signal
59	mLV0P	Differential inputs (mini-LVDS) for 8-bit RGB data and control signal
60	GND	GND

5.0 INTERFACE CONNECTION.



6.0 SIGNAL TIMING SPECIFICATION

6.1 Timing Parameters (DE only mode)

< Table 7. Timing Table >

ITEM	Symbol		Min	Typ	Max	Unit	Note
CLK	Period	t_{CLK}	11.8	13.3	17.9	ns	
	Frequency	-	56	75.4	85.0	MHz	
Hsync	Period	t_{HP}	1450	1560	2000	t_{CLK}	
	Frequency	f_H	39.4	48.4	55	KHz	
Vsync	Period	t_{VP}	778	806	1200	t_{HP}	
	Frequency	f_V	47	60	65	Hz	
Horizontal Active Display Term	Valid	t_{HV}	-	1366	-	t_{CLK}	
	Total	t_{HP}	1450	1560	2000	t_{CLK}	
Vertical Active Display Term	Valid	t_{VV}	-	768	-	t_{HP}	
	Total	t_{VP}	778	806	1200	t_{HP}	

Notes: This product is DE only mode. The input of Hsync & Vsync signal does not have an effect on normal operation.

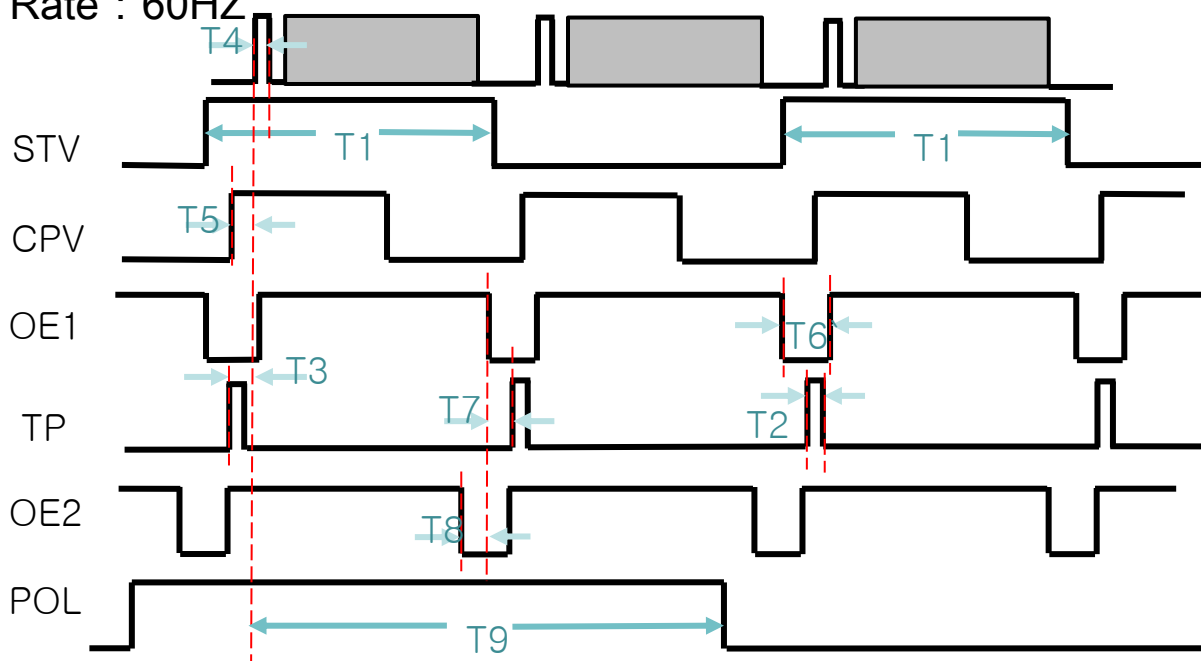
6.0 SIGNAL TIMING SPECIFICATION

6.2 Signal Timing Waveform

H total : 1560

V total : 806

Frame Rate : 60HZ



$T1=1550T_{mini-CLK}$	10.34us	STV Width(1H)
$T2=105T_{mini-CLK}$	0.7us	TP Width
$T3=30T_{mini-CLK}$	200ns	TP Rising to Reset Rising
$T4=14T_{mini-CLK}$	0.092us	Reset Width
$T5=74T_{mini-CLK}$	0.494us	CPV Rising to Reset Rising
$T6=426T_{mini-CLK}$	2.84us	OE1 Width
$T7=225T_{mini-CLK}$	1.5us	GOE
$T8=135T_{mini-CLK}$	0.9us	MLG Width
$T9=2123T_{mini-CLK}$	14.16us	Reset Rising to POL Falling

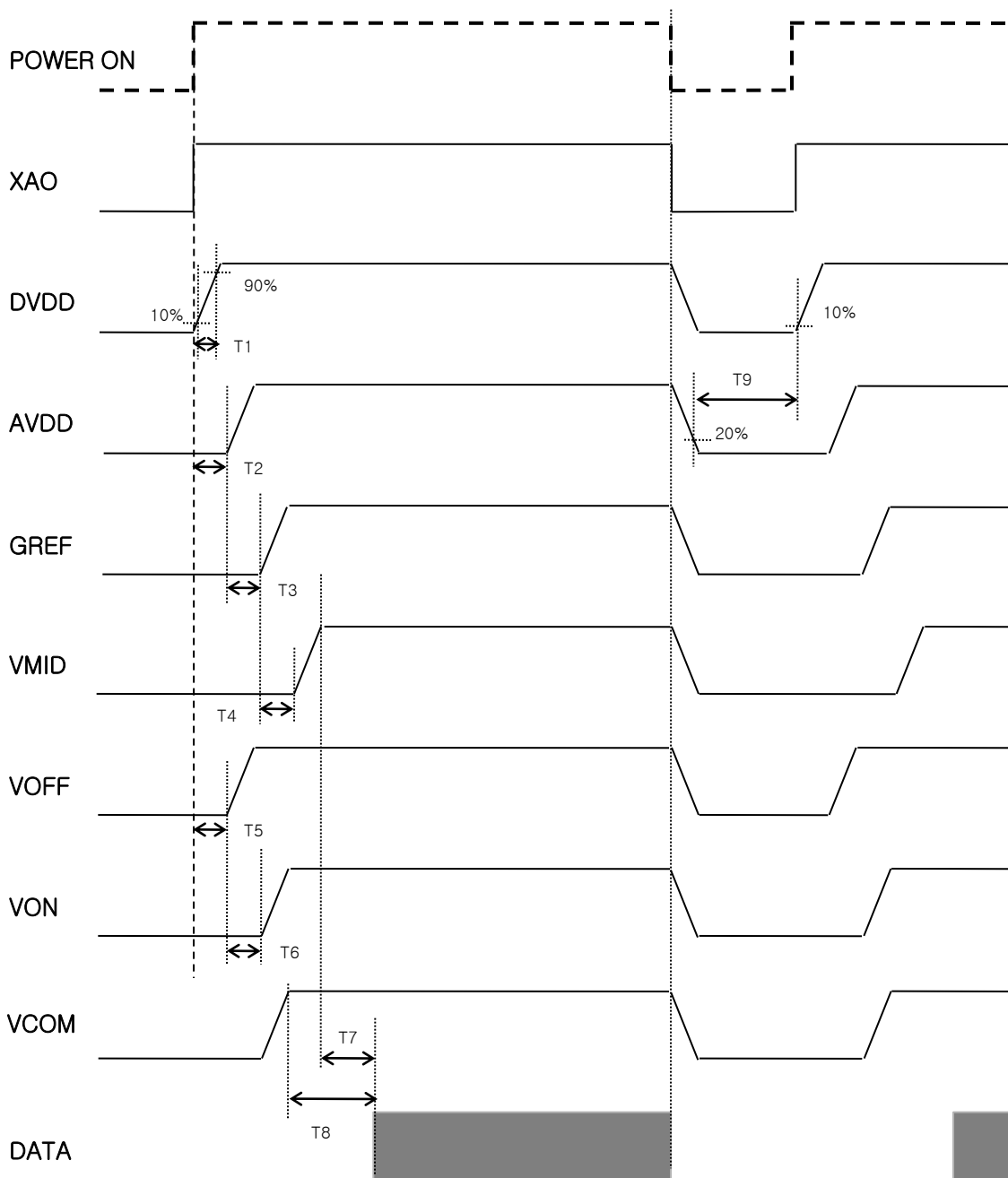
$F_{mini-CLK} = 150MHz$

$T_{mini-CLK} = 6.67ns$

6.0 SIGNAL TIMING SPECIFICATION

6.3 Power Sequence

Power sequence

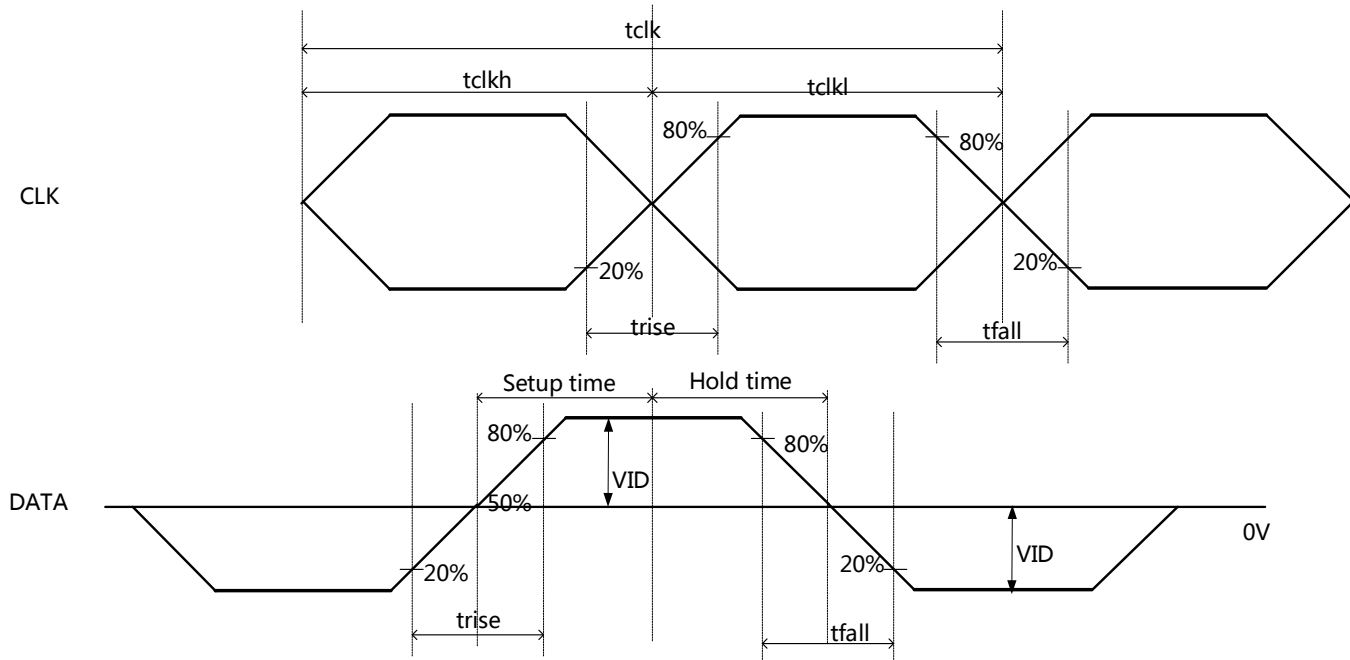


6.0 SIGNAL TIMING SPECIFICATION**6.3 Power Sequence**

T	Min	Type	Max	Unit	Note
T1	0		10	ms	
T2	0			ms	
T3	0			ms	AVDD must be higher than VMID and GREF all the time
T4	0			ms	AVDD must be higher than VMID and GREF all the time
T5	0			ms	
T6	0			ms	
T7	0			ms	
T8	0			ms	
T9	0			ms	

6.0 SIGNAL TIMING SPECIFICATION

6.4 miniLVDS Eye Diagram



< Table 10. Eye Diagram information >

Parameter	Symbol	Spec			Unit
		Min	Typ	Max	
Clock Period	t_{clk}	4	-	-	ns
Clock low pulse width	t_{clkl}	$0.4t_{clk}$	-	$0.6t_{clk}$	ns
Clock high pulse width	t_{clkh}	$0.4t_{clk}$	-	$0.6t_{clk}$	ns
Data setup time	t_{setup}	0.8	-	-	ns
Data hold time	t_{hold}	0.8	-	-	ns
CLK,Data rising time	t_{rise}	-	-	0.8	ns
CLK,Data falling time	t_{fall}	-	-	0.8	ns
mini-LVDS different voltage	VID	150	-	-	mv

Condition:Mini-LVDS CLK MAX Frequency \leq 250Mhz

The Eye Diagram is the source driver received information.

7.0 MECHANICAL CHARACTERISTICS

Figure 3 (located in Appendix) shows mechanical outlines for the model HV320WHB-N80. Other parameters are shown in Table 10.

< Table 11. Dimensional Parameters >

Parameter	Specification	Unit
Active area	697.685 (H) × 392.256(V)	mm
Pixel pitch	0.51(H) × 0.51(V)	mm
Number of pixels	1366(H) × 768(V) (1 pixel = R + G + B dots)	pixels
Weight	895(typ.)	gram

The surface of the LCD has an anti-glare coating to minimize reflection and a coating to reduce scratching.

8.0 RELIABILITY TEST

< Table 12. Reliability Test Condition >

Item	Test Condition
High-Temp/STG	Ta = 60 °C, 240 hrs
Low-Temp/STG	Ta = -20 °C, 240 hrs
Temp-Humi/OP	Ta = 50 °C, 80%RH, 240hrs
High-Temp/OP	Ta = 50 °C, 240hrs
Low-Temp/OP	Ta = -5 °C, 240hrs
TST	Ta = -20 °C ↔ 60 °C (0.5 hr), 100 cycle

This test condition is based on BOE module.

9.0 HANDLING & CAUTIONS

(1) Cautions when taking out the Panel

- Pick the pouch only, when taking out panel from a shipping package.

(2) Cautions for handling the panel

- As the electrostatic discharges may break the LCD panel, handle the LCD panel with care. Peel a protection sheet off from the LCD panel surface as slowly as possible.
- As the LCD panel and back - light element are made from fragile glass material, impulse and pressure to the LCD panel should be avoided.
- As the surface of the polarizer is very soft and easily scratched, use a soft dry cloth without chemicals for cleaning.
- Do not pull the interface connector in or out while the LCD panel is operating.
- Put the panel display side down on a flat horizontal plane.
- Handle connectors and cables with care.

(3) Cautions for the operation

- When the panel is operating, do not lose CLK, ENAB signals. If any one of these signals is lost, the LCD panel would be damaged.
- Obey the supply voltage sequence. If wrong sequence is applied, the panel would be damaged.

(4) Cautions for the atmosphere

- Dew drop atmosphere should be avoided.
- Do not store and/or operate the LCD panel in a high temperature and/or humidity atmosphere. Storage in an electro-conductive polymer packing pouch and under relatively low temperature atmosphere is recommended.

(5) Cautions for the panel characteristics

- Do not apply fixed pattern data signal to the LCD panel at product aging.
- Applying fixed pattern for a long time may cause image sticking.

(6) Other cautions

- Do not disassemble and/or re-assemble LCD panel.
- Do not re-adjust variable resistor or switch etc.
- When returning the panel for repair or etc., Please pack the panel not to be broken. We recommend to use the original shipping packages.

10.0 PRODUCT SERIAL NUMBER



MDL ID Naming Rule:

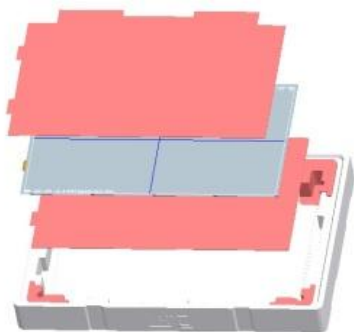
Digit Code	1	2	3	4	5	6	7	8	9	10	11	12	13
Code	S	L	S	F	1	2	3	5	9	0	0	0	0
Description	Model Code /GBN		Grade	Line	Year		Month	Model Extension Code		Serial No 0001-ZZZZ			

11.0 Packing

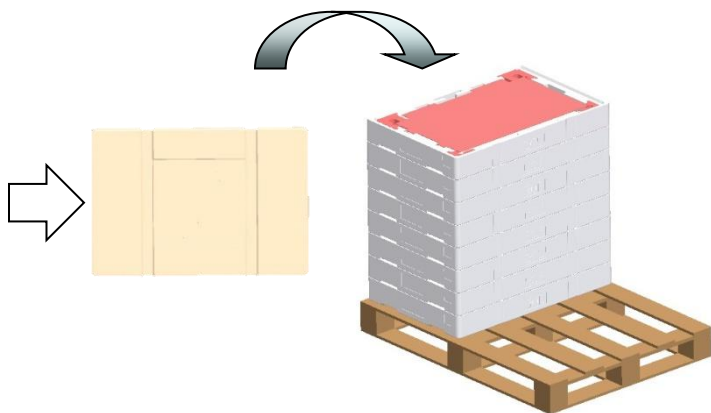
BOE provides the standard shipping container for customers, unless customer specifies their packing information. The standard packing method and Barcode information are shown in below.

11.1 Packing Order

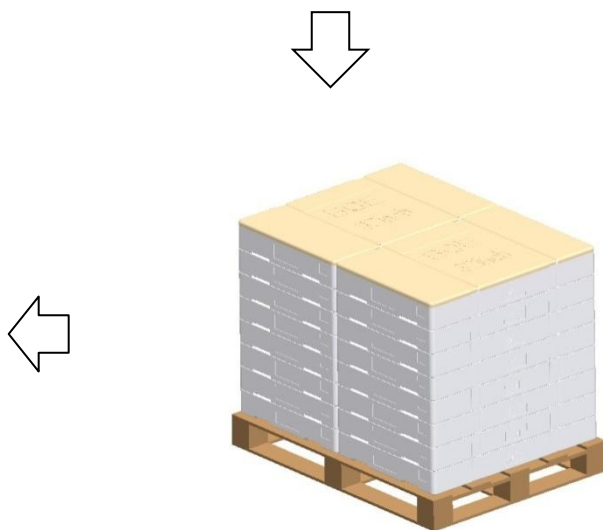
Put EPE pad and panels into the box, 15pcs panels per box



Put the box on the pallet, 8ea boxes per quarter pallet, a cover on the top of the boxes



Use wrapping film to bind up them



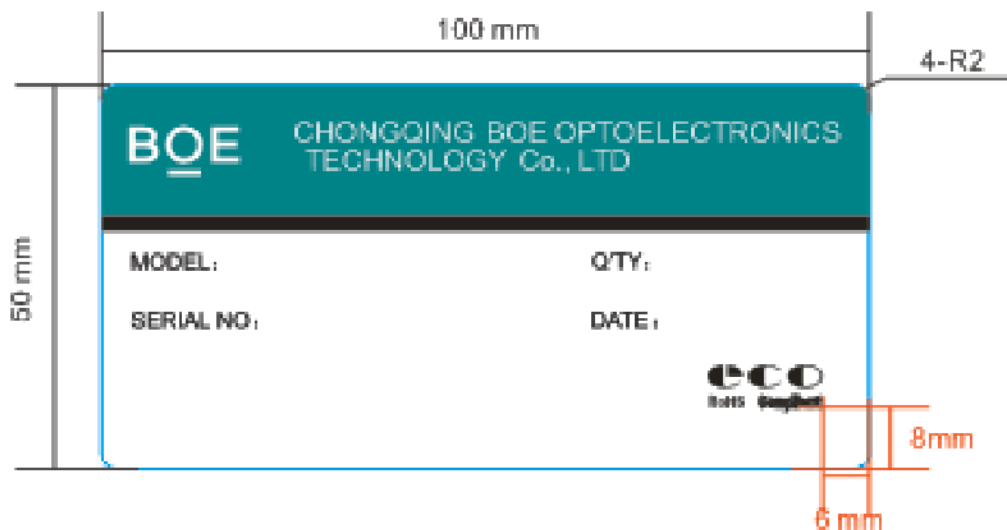
16ea boxes and 2covers per pallet

11.2 Packing Note

- Box Dimension : 857mm(L)×558mm(W)×142mm(G)
- Package Quantity in one Box : 15pcs

11.3 Box Label

- Label Size : 100 mm (L) × 50 mm (W)
- Contents
 - Model : HV320WHB-N81
 - Q`ty : 15pcs Open Cell in one box.
 - Serial No. : Box Serial No.
 - Date : Packing Date

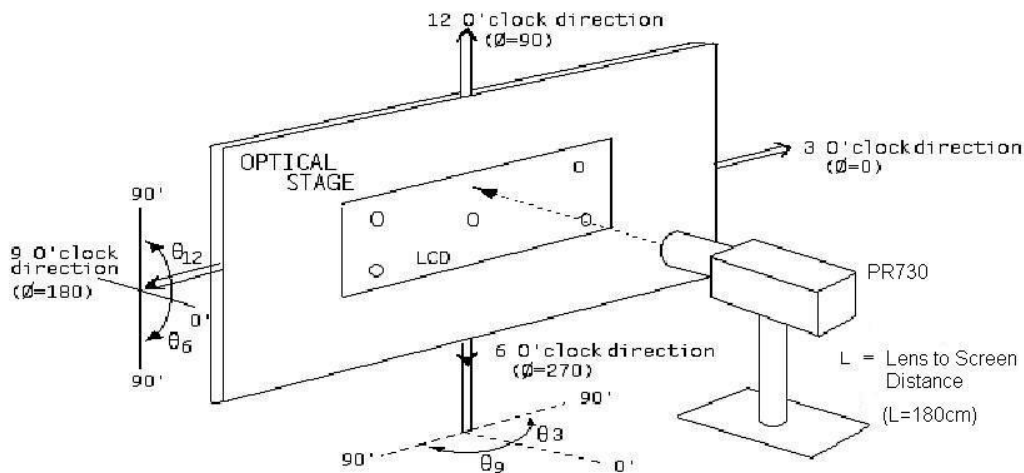


Box ID Naming Rule:

Digit	1	2	3	4	5	6	7	8	9	10	11	12	13
Code	S	L	S	F	1	2	3	D	0	0	0	6	8
Description	Products GBN		Grade	Line	Year		Month	Revision Code	Serial No				

12.0 APPENDIX

< Figure 1. Measurement Set Up >

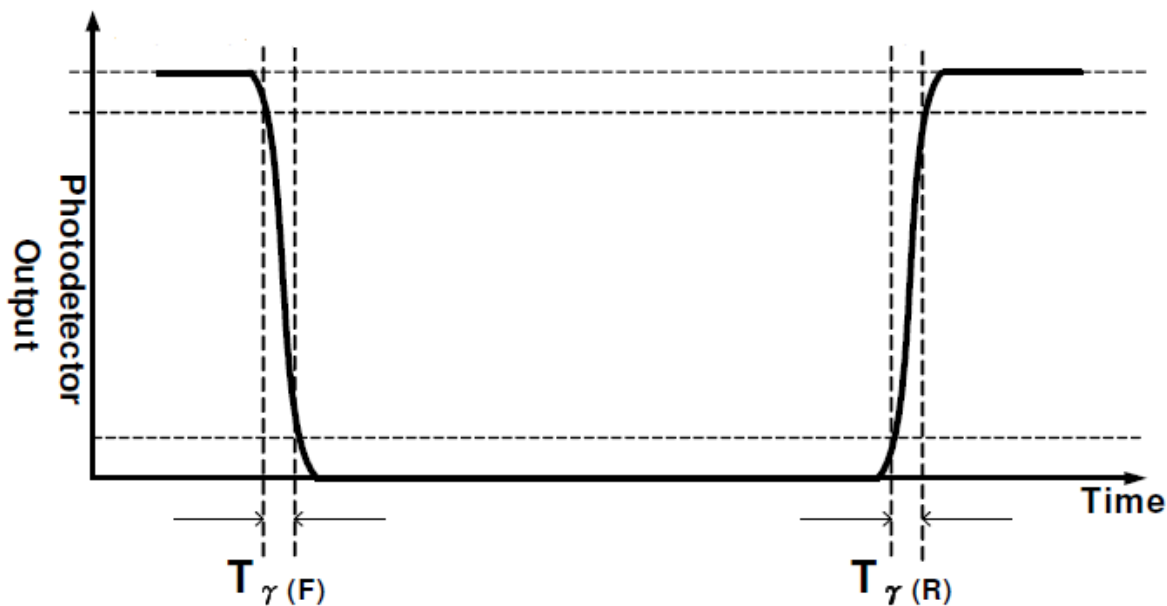


< Figure 2. Response Time Testing >

Any level of gray (Bright)

Any level of gray (Dark)

Any level of gray (Bright)



< Figure 3. TFT-LCD Open Cell Outline Dimensions (Front View) >

