

**PROPRIETARY NOTE**

THIS SPECIFICATION IS THE PROPERTY OF BOE TFT-LCD SBU AND SHALL NOT BE REPRODUCED OR COPIED WITHOUT THE WRITTEN PERMISSION OF BOE TFT-LCD SBU AND MUST BE RETURNED TO BOE TFT-LCD SBU UPON ITS REQUEST

TITLE : HV320WXC-300
Preliminary Product Specification
Rev. P1

BOE HF TFT-LCD

Hefei BOE OPTOELECTRONICS TECHNOLOGY

SPEC. NUMBER	PRODUCT GROUP	REV.	ISSUE DATE	PAGE
B2005-C001-O(1/3)	TFT-LCD	P1	2011.03.11	1 OF 27

A4(210 X 297)

京东方
BOE

PRODUCT GROUP

REV

ISSUE DATE

TFT- LCD PRODUCT

P1

2011.3.11

REVISION HISTORY

REV.	ECN NO.	DESCRIPTION OF CHANGES	DATE	PREPARED
P0		Initial Release	10.12.22	朴求铉
P1		Green Color Coordinate, Response time	11.03.11	朴求铉
SPEC. NUMBER	SPEC. TITLE			PAGE
B2005-C001-O(2/3)	HV320WXC-300 Preliminary Product Specification			2 OF 27

B2005-C001-O(2/3)

A4(210 X 297)



京东方
BOE

PRODUCT GROUP

REV

ISSUE DATE

TFT- LCD PRODUCT

P1

2011.03.11

Contents

No	ITEM	Page
	REVISIONS HISTORY	2
	CONTENTS	3
1	GENERAL DESCRIPTION	4
	1.1 Introduction	
	1.2 Features	
	1.3 Applications	
	1.4 General Specification	
2	ABSOLUTE MAXIMUM RATINGS	6
3	ELECTRICAL SPECIFICATIONS	
	3.1 TFT LCD Module	
	3.2 LED Converter	
4	INTERFACE CONNECTION	9
	4.1 Module Input Signal & power	
	4.2 LVDS Interface	
	4.3 LED Converter Input Signal & Power	
5	SIGNAL TIMING SPECIFICATIONS	12
	5.1 Timing Parameter	
	5.2 Signal Timing Waveform	
	5.3 Input Signals, Basic Display Colors & Cray Scale Of Colors	
	5.4 Power Sequence	
6	OPTICAL SPECIFICATIONS	16
7	MECHANICAL CHARACTERISTICS	18
8	RELIABLITY	19
9	PRODUCT SERIAL NUMBER	20
10	PACKING INFORMATION	21
11	HANDING & CAUTIONS	23
12	APPENDIX	24

SPEC. NUMBER

SPEC. TITLE

HV320WXC-300 Preliminary Product Specification

PAGE

3 OF 27

B2005-C001-O(3/3)

A4(210 X 297)



PRODUCT GROUP

REV

ISSUE DATE

TFT- LCD PRODUCT

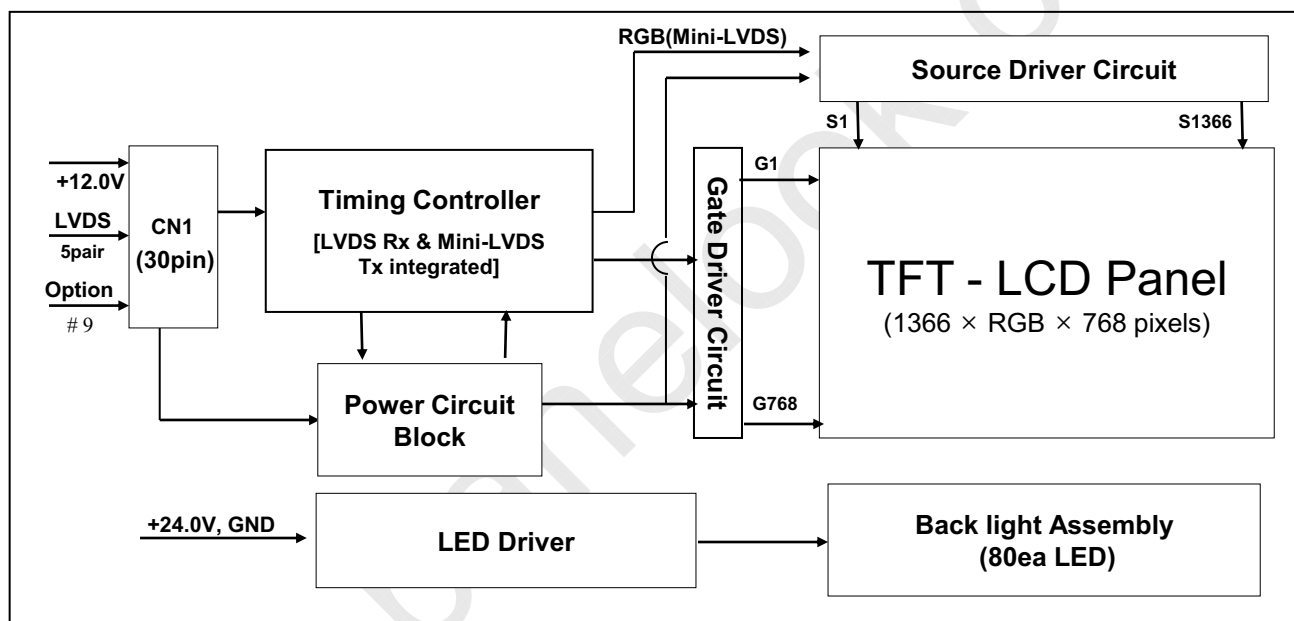
P1

2011.03.11

1.0 GENERAL DESCRIPTION

1.1 Introduction

HV320WXC-300 is a color active matrix TFT LCD module using amorphous silicon TFT's (Thin Film Transistors) as an active switching devices. This module has a 31.51 inch diagonally measured active area with WXGA resolutions (1366 horizontal by 768 vertical pixel array). Each pixel is divided into RED, GREEN, BLUE dots which are arranged in vertical stripe and this module can display 16.7M colors. The TFT-LCD panel used for this module is adapted for a low reflection and higher color type.



1.2 Features

- LVDS Interface with 1 pixel / clock
- High-speed response
- Lower Color shift Image Quality
- 8-bit color depth, display 16.7M colors
- High luminance and contrast ratio, low reflection and wide viewing angle
- DE (Data Enable) only mode
- AFFS technology is applied for high display quality
- RoHS Compliant

SPEC. NUMBER

SPEC. TITLE

PAGE

HV320WXC-300 Preliminary Product Specification

4 OF 27

B2005-C001-O(3/3)

A4(210 X 297)



PRODUCT GROUP

REV

ISSUE DATE

TFT- LCD PRODUCT

P1

2011.03.11

1.3 Application

- Home Alone Multimedia TFT-LCD TV
- Display Terminals for Control System
- High Definition TV(HD TV)
- AV application Products

1.4 General Specification

< Table 1. General Specifications >

Parameter	Specification	Unit	Remarks
Active area	697.685(H) × 392.256(V)	mm	
Number of pixels	1366(H) × 768(V)	pixels	
Pixel pitch	170.25(H) × 510.75(V) × RGB	μm	
Pixel arrangement	Pixels RGB stripe arrangement		
Display colors	16.7M(8bits-true)	colors	
Display mode	Transmission mode, Normally Black		
Outline Dimension	741.4(H) × 435.8(V) × 16.8(D) typ.	mm	
Weight	5900 (typ.)	gram	
Power Consumption	Total <44Watt (Typ.) (Logic= 3.6W, Lamp<40W)	Watt	
Surface Treatment	Haze 10%, 3H, Semi-glare treatment (Front Polarizer)		

SPEC. NUMBER

SPEC. TITLE

HV320WXC-300 Preliminary Product Specification

PAGE

5 OF 27

B2005-C001-O(3/3)

A4(210 X 297)



PRODUCT GROUP

REV

ISSUE DATE

TFT- LCD PRODUCT

P1

2011.03.11

2.0 ABSOLUTE MAXIMUM RATINGS

The followings are maximum values which, if exceed, may cause faulty operation or damage to the unit. The operational and non-operational maximum voltage and current values are listed in Table 2.

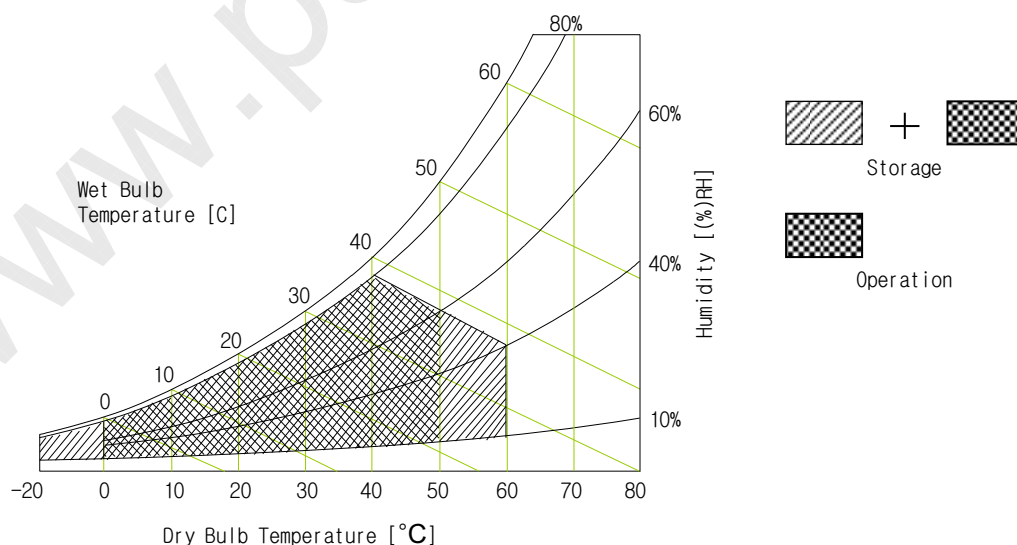
< Table 2. LCD Module Electrical Specifications >

[VSS=GND=0V]

Parameter		Symbol	Min.	Max.	Unit	Remarks
Power Supply Voltage	LCD Module	V_{DD}	VSS-0.3	13.2	V	Ta = 25 °C
	Converter	V_{BL}	VSS-0.3	26.4	V	
Operating Temperature		T_{OP}	0	+50	°C	1)
		T_{SUR}	0	+60	°C	
Storage Temperature		T_{ST}	-20	+60	°C	
Operating Ambient Humidity		Hop	10	80	%RH	
Storage Humidity		Hst	10	80	%RH	

Note : 1) Temperature and relative humidity range are shown in the figure below.

Wet bulb temperature should be 39 °C max. and no condensation of water.



SPEC. NUMBER

SPEC. TITLE

PAGE

HV320WXC-300 Preliminary Product Specification

6 OF 27

B2005-C001-O(3/3)

A4(210 X 297)

 京东方 BOE	PRODUCT GROUP	REV	ISSUE DATE
	TFT- LCD PRODUCT	P1	2011.03.11

3.0 ELECTRICAL SPECIFICATIONS

3.1 TFT LCD Module

< Table 3. LCD Module Electrical Specifications >

[Ta =25 ±2 °C]

Parameter	Symbol	Values			Unit	Notes
		Min	Typ	Max		
Power Supply Input Voltage	VDD	10.8	12	13.2	Vdc	
Power Supply Current	IDD	200	250	350	mA	
Power Consumption	PLCD	2	3	5	Watt	
Vsync Frequency	f _V	47	60	63	Hz	
Hsync Frequency	f _H	39.4	47.4	53	KHz	
Main Clock Frequency	PLCD	-	80.4	85	MHz	
Rush current	IRUSH	-	-	2.0	A	2

Notes : 1. The supply voltage is measured and specified at the interface connector of LCM.

The current draw and power consumption specified is for VDD=12.0V, Frame rate=60Hz and Clock frequency = 80MHz. Test Pattern of power supply current

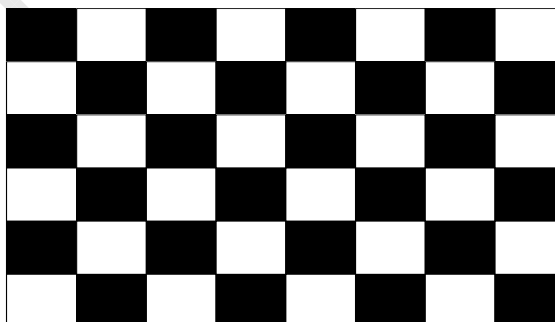
a) Typ : Black Pattern

b) Max : Sub Dot Pattern

2. The duration of rush current is about 2ms and rising time of Power Input is 1ms(min)

White : 255Gray
Black : 0Gray

Mosaic Pattern(8 x 6)



SPEC. NUMBER	SPEC. TITLE	PAGE
B2005-C001-O(3/3)	HV320WXC-300 Preliminary Product Specification	7 OF 27

B2005-C001-O(3/3)

A4(210 X 297)



PRODUCT GROUP

REV

ISSUE DATE

TFT- LCD PRODUCT

P1

2011.03.11

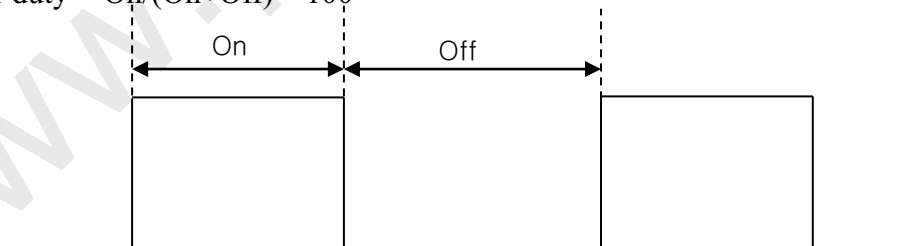
3.2 LED Converter

< Table 4. LED Converter Electrical Specifications >

Parameter	Symbol	Condition	Values			Unit	Notes
			Min.	Typ.	Max.		
Input Voltage	V_{BL}		22.8	24.0	25.2	V	
Input Current	I_{BL}	V _{dim} =3.3V	-	1.5	1.7	A	1
Rush current	IRUSH	$V_{BL} = 24V$	-	-	3	A	
Power Consumption	P_{BL}	Typ Luminance	-	36	40	Watt	
B/L on/off control	$V_{ON/OFF}$	Lamp ON = High	2	3.3	5	V	
		Lamp OFF =Low	0	-	0.8	V	
Analog Dimming	A_{DIM}	Min. Luminance	0			V	
		Max. Luminance	3.3				
PWM Frequency	F_{PWM}		140	190	240	Hz	
PWM Duty	D_{PWM}		3.5	-	100	%	2
Life Time			30,000	-	-	Hrs	3

Notes: 1. The specified current and power consumption are under the typical supply Input voltage, 24V. It is total power consumption.

2. High-duty = $\text{On}/(\text{On}+\text{Off}) * 100$



3. The life time of a LED, 30,000Hrs, is determined as the time at which luminance of the lamp is 50% compared to that of initial value at the typical LED current on condition of continuous operating at $25 \pm 2^\circ\text{C}$.

SPEC. NUMBER

SPEC. TITLE

HV320WXC-300 Preliminary Product Specification

PAGE

8 OF 27

B2005-C001-O(3/3)

A4(210 X 297)



PRODUCT GROUP

REV
ISSUE DATE

TFT- LCD PRODUCT

P1

2011.03.11

4.0 INTERFACE CONNECTION

4.1 Module Input Signal & Power

- Connector : IS100-L30B-C23(Manufactured by UJU) or Equivalent.

< Table 5. LCM Module Input Connector Pin Configuration >

Pin No	Symbol	Description	Pin No	Symbol	Description
1	VDD	Power Supply +12.0V	16	RX1+	LVDS Receiver Signal(+)
2	VDD	Power Supply +12.0V	17	GND	Ground
3	VDD	Power Supply +12.0V	18	RX2-	LVDS Receiver Signal(-)
4	VDD	Power Supply +12.0V	19	RX2+	LVDS Receiver Signal(+)
5	GND	Ground	20	GND	Ground
6	GND	Ground	21	RCLK-	LVDS Receiver Clock Signal(-)
7	GND	Ground	22	RCLK+	LVDS Receiver Clock Signal(+)
8	GND	Ground	23	GND	Ground
9	LVDS_SEL	'H'=JEIDA , 'L' or NC= VESA	24	RX3-	LVDS Receiver Signal(-)
10	NC	No Connection	25	RX3+	LVDS Receiver Signal(+)
11	GND	Ground	26	GND	Ground
12	RX0-	LVDS Receiver Signal(-)	27	NC	No Connection
13	RX0+	LVDS Receiver Signal(+)	28	NC	No Connection
14	GND	Ground	29	GND	Ground
15	RX1-	LVDS Receiver Signal(-)	30	GND	Ground

Notes : 1. NC(Not Connected) : This pins are only used for BOE internal operations.

2. Input Level of LVDS signal is based on the IEA 664 Standard.

3. LVDS_SEL : This pin is used for selecting LVDS signal data format.

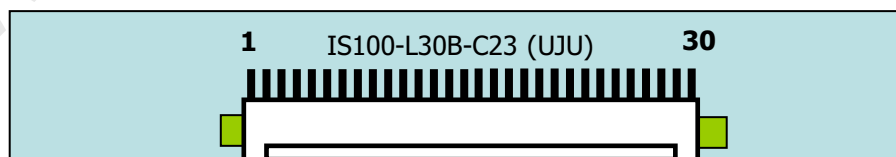
If this Pin : Low (GND) or Open (NC) → Normal NS LVDS format

Otherwise : High (3.3V) → JEIDA LVDS format

Sequence : On = Vdd ≥ LVDS Option ≥ Interface signal

Off = Interface signal ≥ LVDS Option ≥ Vdd

Rear view of LCM


SPEC. NUMBER
SPEC. TITLE
PAGE

HV320WXC-300 Preliminary Product Specification

9 OF 27

B2005-C001-O(3/3)

A4(210 X 297)



PRODUCT GROUP

REV

ISSUE DATE

TFT- LCD PRODUCT

P1

2011.03.11

4.2 LVDS Interface

- LVDS Receiver : Timing Controller (LVDS Rx merged)

- LVDS Data : Pixel Data

< Table 6. LCM Module Input Connector Pin Configuration >

	LVDS Pin	Vesa Data format	JEIDA Data format	Remark
TxOUT/RxIN0	TxIN/RxOUT0	Red0 [LSB]	R2	
	TxIN/RxOUT1	Red1	R3	
	TxIN/RxOUT2	Red2	R4	
	TxIN/RxOUT3	Red3	R5	
	TxIN/RxOUT4	Red4	R6	
	TxIN/RxOUT6	Red5	R7 [MSB]	
	TxIN/RxOUT7	Green0 [LSB]	G2	
TxOUT/RxIN1	TxIN/RxOUT8	Green1	G3	
	TxIN/RxOUT9	Green2	G4	
	TxIN/RxOUT12	Green3	G5	
	TxIN/RxOUT13	Green4	G6	
	TxIN/RxOUT14	Green5	G7 [MSB]	
	TxIN/RxOUT15	Blue0 [LSB]	B2	
	TxIN/RxOUT18	Blue1	B3	
TxOUT/RxIN2	TxIN/RxOUT19	Blue2	B4	
	TxIN/RxOUT20	Blue3	B5	
	TxIN/RxOUT21	Blue4	B6	
	TxIN/RxOUT22	Blue5	B7 [MSB]	
	TxIN/RxOUT24	HSYNC	HSYNC	
	TxIN/RxOUT25	VSYNC	VSYNC	
	TxIN/RxOUT26	DEN	DEN	
TxOUT/RxIN3	TxIN/RxOUT27	Red6	R0 [LSB]	
	TxIN/RxOUT5	Red7 [MSB]	R1	
	TxIN/RxOUT10	Green6	G0 [LSB]	
	TxIN/RxOUT11	Green7 [MSB]	G1	
	TxIN/RxOUT16	Blue6	B0 [LSB]	
	TxIN/RxOUT17	Blue7 [MSB]	B1	
	TxIN/RxOUT23	Reserved	Reserved	

SPEC. NUMBER

SPEC. TITLE

HV320WXC-300 Preliminary Product Specification

PAGE

10 OF 27

B2005-C001-O(3/3)

A4(210 X 297)



PRODUCT GROUP

REV

ISSUE DATE

TFT- LCD PRODUCT

P1

2011.03.11

4.3 LED Converter Input Signal & Power

- Connector : 20022WR_14AML(Yeonho) or equivalent

< Table 7. Converter Input Connector Pin Configuration >

Pin No	Symbol	Description	Remarks
1	VBL	Power Supply +24V	
2	VBL	Power Supply +24V	
3	VBL	Power Supply +24V	
4	VBL	Power Supply +24V	
5	VBL	Power Supply +24V	
6	GND	Ground	
7	GND	Ground	
8	GND	Ground	
9	GND	Ground	
10	GND	Ground	
11	ERR	Normal (GND) / Abnormal (Open Collector)	
12	VON/OFF	Backlight ON/OFF control	(On :2.0V~5.0V/Off :0.0~0.8V)
13	I_PWM	Internal PWM control signal	(Max :3.3V / Min : 0.0V)
14	E_PWM	External PWM control signal	

Notice: 1. PIN 13:Internal PWM Control (Use Pin 13): Pin 14 must open.

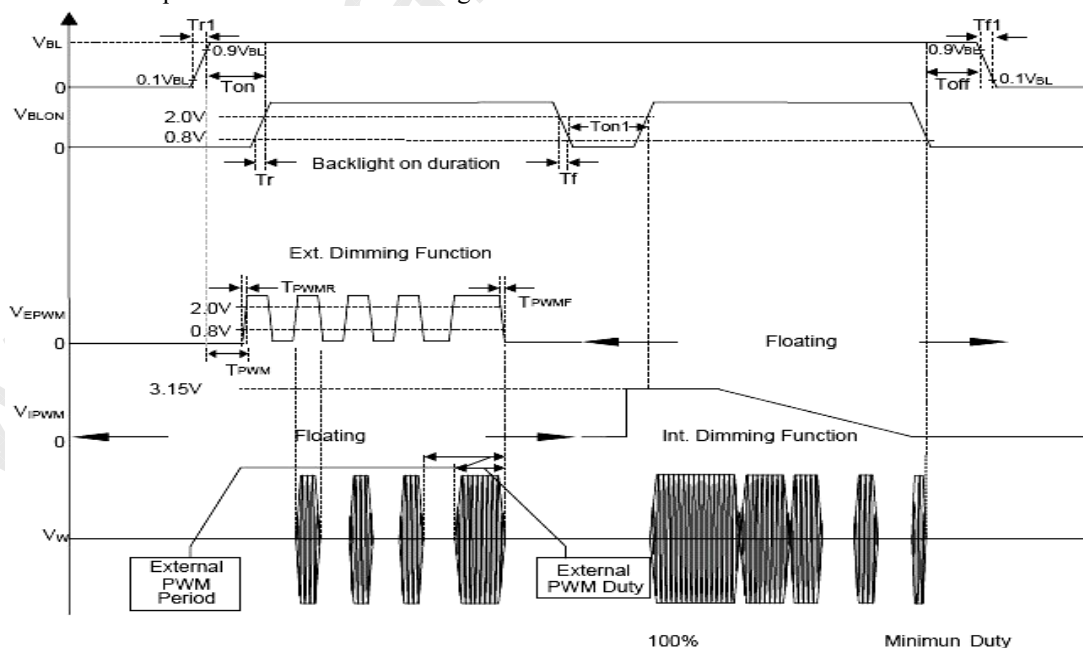
PIN 14:External PWM Control (Use Pin 14): Pin 13 must open.

Pin 13(I_PWM) and Pin 14(E_PWM) can't open in same period.

2. While system is turned ON or OFF, the power sequences must follow as below descriptions:

Turn ON sequence: VBL → PWM signal → BLON

Turn OFF sequence: BLOFF → PWM signal → VBL



SPEC. NUMBER

SPEC. TITLE

PAGE

HV320WXC-300 Preliminary Product Specification

11 OF 27

B2005-C001-O(3/3)

A4(210 X 297)



PRODUCT GROUP

REV

ISSUE DATE

TFT- LCD PRODUCT

P1

2011.03.11

5.0 SIGNAL TIMING SPECIFICATION

5.1 Timing Parameters (DE only mode)

< Table 8. Timing Table >

ITEM	Symbol		Min	Typ	Max	Unit	Note
CLK	Period	t_{CLK}	11.5	12.8	15.0	ns	
	Frequency	-	70.5	78.4	90.0	MHz	
Hsync	Period	t_{HP}	1416	1560	1776	t_{CLK}	
	Frequency	f_H	39.4	47.4	53	KHz	
Vsync	Period	t_{VP}	775	790	1063	t_{HP}	
	Frequency	f_V	47	60	63	Hz	
Horizontal Active Display Term	Valid	t_{HV}	-	1366	-	t_{CLK}	
	Total	t_{HP}	1440	1560	2000	t_{CLK}	
Vertical Active Display Term	Valid	t_{VV}	-	768	-	t_{HP}	
	Total	t_{VP}	773	838	1200	t_{HP}	

Notes: This product is DE only mode. The input of Hsync & Vsync signal does not have an effect on normal operation.

SPEC. NUMBER

SPEC. TITLE

HV320WXC-300 Preliminary Product Specification

PAGE

12 OF 27

B2005-C001-O(3/3)

A4(210 X 297)



PRODUCT GROUP

REV

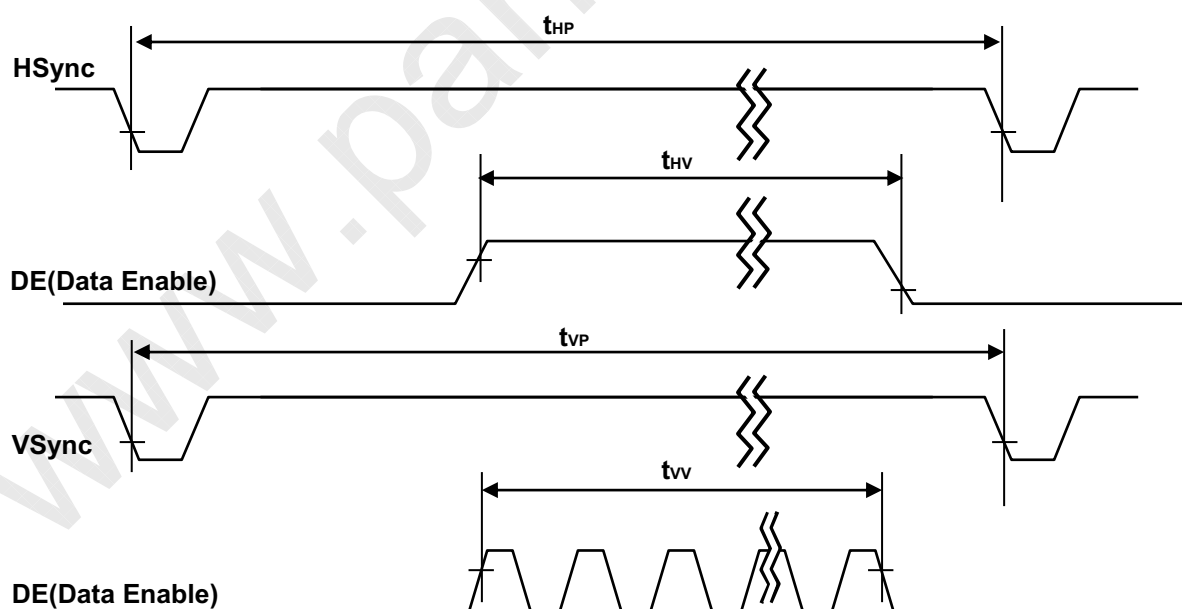
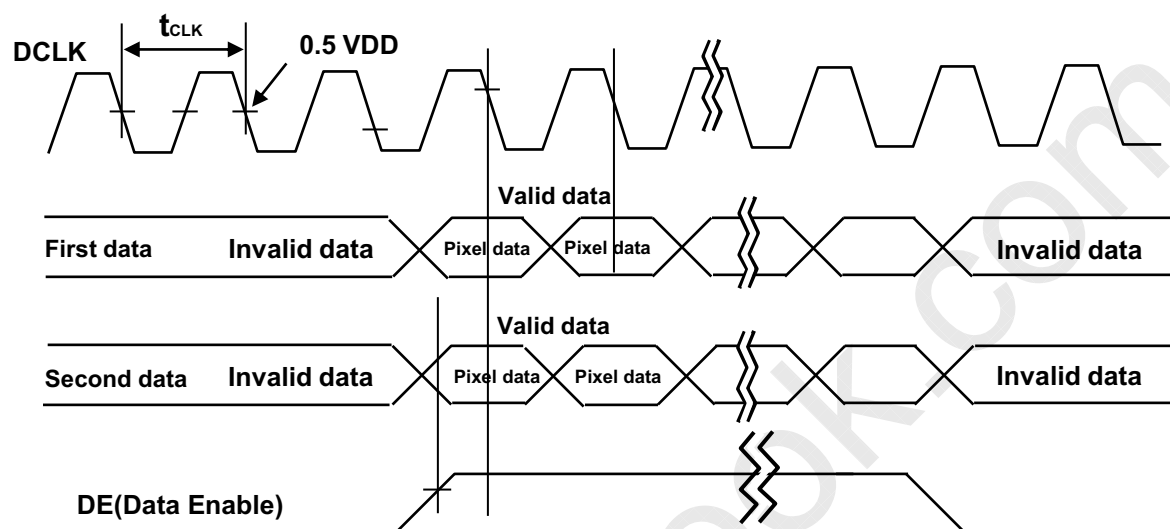
ISSUE DATE

TFT-LCD PRODUCT

P1

2011.03.11

5.2 Signal Timing Waveform



SPEC. NUMBER

SPEC. TITLE

PAGE

HV320WXC-300 Preliminary Product Specification

13 OF 27

B2005-C001-O(3/3)

A4(210 X 297)



PRODUCT GROUP

REV

ISSUE DATE

TFT- LCD PRODUCT

P1

2011.03.11

5.3 Input Signals, Basic Display Colors & Gray Scale Of Colors

Color & Gray Scale		Input Data Signal																							
		Red Data								Green Data				Blue Data											
		R7	R6	R5	R4	R3	R2	R1	R0	G7	G6	G5	G4	G3	G2	G1	G0	B7	B6	B5	B4	B3	B2	B1	B0
Basic Colors	Black	0	0	0	0	0	0	0	0	0	0	0	0	0	0	0	0	0	0	0	0	0	0	0	0
	Blue	0	0	0	0	0	0	0	0	0	0	0	0	0	0	0	0	1	1	1	1	1	1	1	1
	Green	0	0	0	0	0	0	0	0	1	1	1	1	1	1	1	1	0	0	0	0	0	0	0	0
	Cyan	0	0	0	0	0	0	0	0	1	1	1	1	1	1	1	1	1	1	1	1	1	1	1	1
	Red	1	1	1	1	1	1	1	1	0	0	0	0	0	0	0	0	0	0	0	0	0	0	0	0
	Magenta	1	1	1	1	1	1	1	1	0	0	0	0	0	0	0	0	1	1	1	1	1	1	1	1
	Yellow	1	1	1	1	1	1	1	1	1	1	1	1	1	1	1	1	0	0	0	0	0	0	0	0
	White	1	1	1	1	1	1	1	1	1	1	1	1	1	1	1	1	1	1	1	1	1	1	1	1
Gray Scale of Red	Black	0	0	0	0	0	0	0	0	0	0	0	0	0	0	0	0	0	0	0	0	0	0	0	
	△	0	0	0	0	0	0	0	1	0	0	0	0	0	0	0	0	0	0	0	0	0	0	0	
	Darker	0	0	0	0	0	0	0	1	0	0	0	0	0	0	0	0	0	0	0	0	0	0	0	
	△	↑								↑				↑											
	▽	↓								↓				↓											
	Brighter	1	1	1	1	1	1	0	1	0	0	0	0	0	0	0	0	0	0	0	0	0	0	0	0
	▽	1	1	1	1	1	1	0	0	0	0	0	0	0	0	0	0	0	0	0	0	0	0	0	0
	Red	1	1	1	1	1	1	1	1	0	0	0	0	0	0	0	0	0	0	0	0	0	0	0	0
Gray Scale of Green	Black	0	0	0	0	0	0	0	0	0	0	0	0	0	0	0	0	0	0	0	0	0	0	0	
	△	0	0	0	0	0	0	0	0	0	0	0	0	0	0	0	1	0	0	0	0	0	0	0	
	Darker	0	0	0	0	0	0	0	0	0	0	0	0	0	0	1	0	0	0	0	0	0	0	0	
	△	↑								↑				↑											
	▽	↓								↓				↓											
	Brighter	0	0	0	0	0	0	0	0	1	1	1	1	1	1	0	1	0	0	0	0	0	0	0	
	▽	0	0	0	0	0	0	0	0	1	1	1	1	1	1	0	0	0	0	0	0	0	0	0	
	Green	0	0	0	0	0	0	0	0	1	1	1	1	1	1	1	0	0	0	0	0	0	0	0	0
Gray Scale of Blue	Black	0	0	0	0	0	0	0	0	0	0	0	0	0	0	0	0	0	0	0	0	0	0	0	
	△	0	0	0	0	0	0	0	0	0	0	0	0	0	0	0	0	0	0	0	0	0	0	1	
	Darker	0	0	0	0	0	0	0	0	0	0	0	0	0	0	0	0	0	0	0	0	0	0	1	
	△	↑								↑				↑											
	▽	↓								↓				↓											
	Brighter	0	0	0	0	0	0	0	0	0	0	0	0	0	0	0	1	1	1	1	1	1	1	0	
	▽	0	0	0	0	0	0	0	0	0	0	0	0	0	0	0	1	1	1	1	1	1	1	0	
	Blue	0	0	0	0	0	0	0	0	0	0	0	0	0	0	0	1	1	1	1	1	1	1	1	
Gray Scale of White	Black	0	0	0	0	0	0	0	0	0	0	0	0	0	0	0	0	0	0	0	0	0	0	0	
	△	0	0	0	0	0	0	0	1	0	0	0	0	0	0	0	1	0	0	0	0	0	0	1	
	Darker	0	0	0	0	0	0	0	1	0	0	0	0	0	0	1	0	0	0	0	0	0	1	0	
	△	↑								↑				↑											
	▽	↓								↓				↓											
	Brighter	1	1	1	1	1	1	0	1	1	1	1	1	1	1	0	1	1	1	1	1	1	1	0	
	▽	1	1	1	1	1	1	0	1	1	1	1	1	1	1	0	1	1	1	1	1	1	1	0	
	White	1	1	1	1	1	1	1	1	1	1	1	1	1	1	1	1	1	1	1	1	1	1	1	

SPEC. NUMBER

SPEC. TITLE

PAGE

HV320WXC-300 Preliminary Product Specification

14 OF 27

B2005-C001-O(3/3)

A4(210 X 297)



PRODUCT GROUP

REV

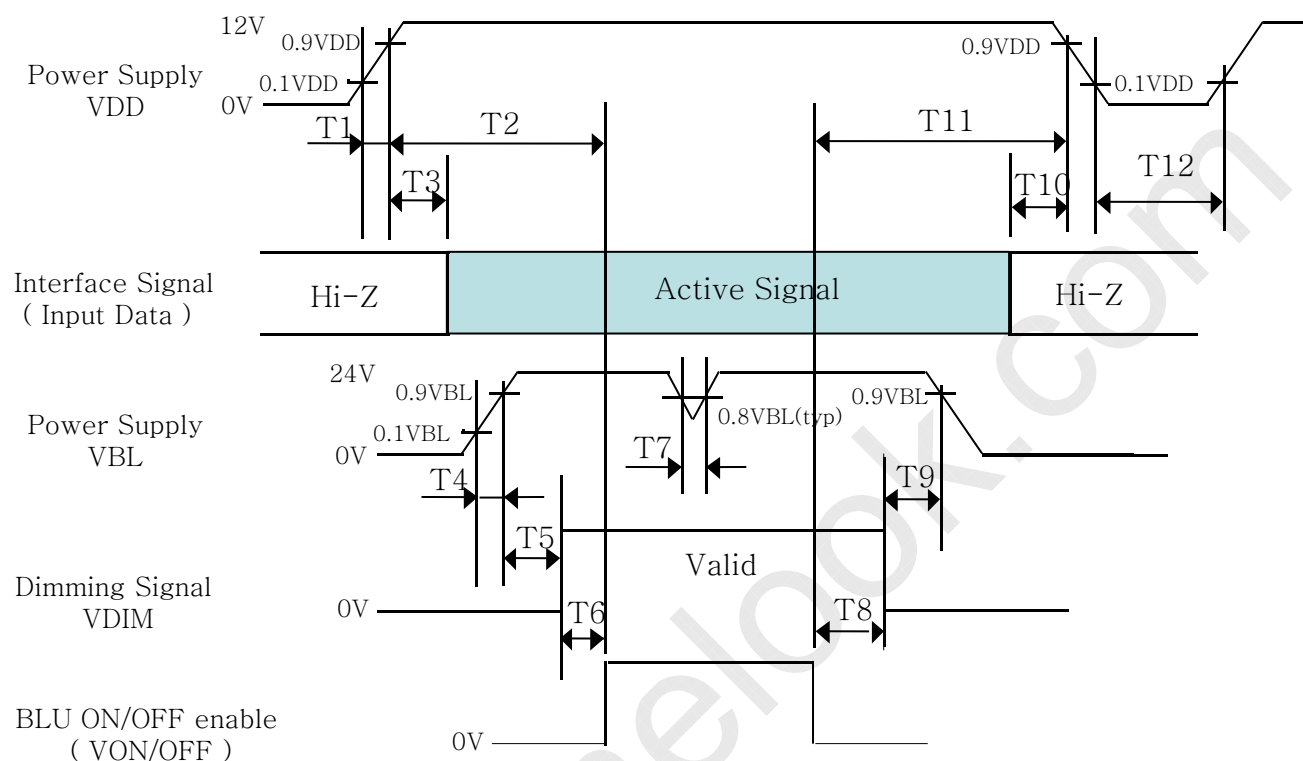
ISSUE DATE

TFT- LCD PRODUCT

P1

2011.03.11

5.4 Power Sequence



Parameter	Values			Units
	Min	Typ	Max	
T1	0.5	-	20	ms
T2	350	-	-	ms
T3	10	-	150	ms
T4	20	-	-	ms
T5	200	-	-	ms
T6	200	-	-	ms
T7	-	-	10	ms
T8	0	-	-	ms
T9	0	-	-	ms
T10	0	-	-	ms
T11	0	-	-	ms
T12	1	-	-	s

Notes:

1. When the power supply VDD is 0V, Keep the level of input signals on the low or keep high impedance.
2. Do not keep the interface signal high impedance when power is on.
3. Back Light must be turn on after power for logic and interface signal are valid.

SPEC. NUMBER

SPEC. TITLE

PAGE

HV320WXC-300 Preliminary Product Specification

15 OF 27

B2005-C001-O(3/3)

A4(210 X 297)



PRODUCT GROUP

REV

ISSUE DATE

TFT- LCD PRODUCT

P1

2011.03.11

6.0 OPTICAL SPECIFICATION

The test of Optical specifications shall be measured in a dark room (ambient luminance ≤ 1 lux and temperature = $25 \pm 2^\circ\text{C}$) with the equipment of Luminance meter system (Goniometer system and TOPCON BM-5) and test unit shall be located at an approximate distance 50cm from the LCD surface at a viewing angle of θ and Φ equal to 0° . We refer to $\theta_{\theta=0}$ ($=\theta_3$) as the 3 o'clock direction (the "right"), $\theta_{\theta=90}$ ($=\theta_{12}$) as the 12 o'clock direction ("upward"), $\theta_{\theta=180}$ ($=\theta_9$) as the 9 o'clock direction ("left") and $\theta_{\theta=270}$ ($=\theta_6$) as the 6 o'clock direction ("bottom"). While scanning θ and/or Φ , the center of the measuring spot on the Display surface shall stay fixed. The measurement shall be executed after 30 minutes warm-up period. VDD shall be 12.0V $\pm 10\%$ at 25°C . Optimum viewing angle direction is 6 'clock.

[VDD = 12.0V, Frame rate = 60Hz, Ta = $25 \pm 2^\circ\text{C}$]

Parameter		Symbol	Condition	Min	Typ	Max	Unit	Remark
Viewing Angle	Horizontal	θ_3	CR > 10		89		Deg.	Note 1
		θ_9			89		Deg.	
	Vertical	θ_{12}			89		Deg.	
		θ_6			89		Deg.	
Color Temperature				-	10,000		K	
Color Gamut				-	72		%	
Contrast ratio		CR		900:1	1200:1	-		Note 2
Luminance of White		Y_w		330	380	-	cd/m ²	Note 3
White luminance uniformity		ΔY		75	-		%	Note 4
Reproduction of color	White	W_x	$\theta = 0^\circ$ (Center) Normal Viewing Angle	TYP. - 0.03	0.279	TYP. + 0.03		Note 5
		W_y			0.292			
	Red	R_x			0.636			
		R_y			0.335			
	Green	G_x			0.312			
		G_y			0.640			
	Blue	B_x			0.146			
		B_y			0.061			
Response Time	G to G	T_g		-	8	(10)	ms	Note 6
Gamma Scale				2.0	2.2	2.4		

SPEC. NUMBER

SPEC. TITLE

HV320WXC-300 Preliminary Product Specification

PAGE

16 OF 27

B2005-C001-O(3/3)

A4(210 X 297)

 京东方 BOE	PRODUCT GROUP	REV	ISSUE DATE
	TFT- LCD PRODUCT	P1	2011.03.11

Note :

1. Viewing angle is the angle at which the contrast ratio is greater than 10. The viewing are determined for the horizontal or 3, 9 o'clock direction and the vertical or 6, 12 o'clock direction with respect to the optical axis which is normal to the LCD surface.
2. Contrast measurements shall be made at viewing angle of $\theta = 0^\circ$ and at the center of the LCD surface. Luminance shall be measured with all pixels in the view field set first to white, then to the dark (black) state. (See FIGURE 1 shown in Appendix) Luminance Contrast Ratio (CR) is defined mathematically.

$$CR = \frac{\text{Luminance when displaying a white raster}}{\text{Luminance when displaying a black raster}}$$

3. Center Luminance of white is defined as the LCD surface. Luminance shall be measured with all pixels in the view field set first to white. This measurement shall be taken at the locations shown in FIGURE 2 for a total of the measurements per display.
4. The White luminance uniformity on LCD surface is then expressed as :
 $\Delta Y = (\text{Minimum Luminance of 5points} / \text{Maximum Luminance of 5points}) * 100$
 (See FIGURE 2 shown in Appendix).
5. The color chromaticity coordinates specified in Table 4. shall be calculated from the spectral data measured with all pixels first in red, green, blue and white. Measurements shall be made at the center of the panel.
6. The electro-optical response time measurements shall be made as FIGURE 3 shown in Appendix by switching the "data" input signal ON and OFF. The times needed for the luminance to change from 10% to 90% is Td, and 90% to 10% is Tr.

SPEC. NUMBER	SPEC. TITLE	PAGE
B2005-C001-O(3/3)	HV320WXC-300 Preliminary Product Specification	17 OF 27

B2005-C001-O(3/3)

A4(210 X 297)



PRODUCT GROUP

REV
ISSUE DATE

TFT- LCD PRODUCT

P1

2011.03.11

7.0 MECHANICAL CHARACTERISTICS

7.1 Dimensional Requirements

FIGURE 4 (located in Appendix) shows mechanical outlines for the model HV320WXC-100. Other parameters are shown in Table 12.

<Table 12. Dimensional Parameters>

Parameter	Specification	Unit
Dimensional outline	741.4(H) × 435.8 (V) × 16.8 (D)	mm
Weight	5900 (typ)	gram
Active area	697.685 (H) × 392.256(V)	mm
Pixel pitch	0.51(H) × 0.51(V)	mm
Number of pixels	1366(H) × 768(V) (1 pixel = R + G + B dots)	pixels
Back-light	LED Backlight (80ea)	

7.2 Mounting

See FIGURE 5. (shown in Appendix)

7.3 Semi-Glare and Polarizer Hardness.

The surface of the LCD has an semi-glare coating to minimize reflection and a coating to reduce scratching.

SPEC. NUMBER
SPEC. TITLE
PAGE

HV320WXC-300 Preliminary Product Specification

18 OF 27

B2005-C001-O(3/3)

A4(210 X 297)



PRODUCT GROUP

REV

ISSUE DATE

TFT- LCD PRODUCT

P1

2011.03.11

8.0 RELIABILITY TEST

The Reliability test items and its conditions are shown in below.

<Table 13. Reliability Test Parameters >

No	Test Items	Conditions
1	High temperature storage test	Ta = 60 °C, 240 hrs
2	Low temperature storage test	Ta = -20 °C, 240 hrs
3	High temperature & high humidity operation test	Ta = 50 °C, 80%RH, 240hrs
4	High temperature operation test	Ta = 50 °C, 240hrs
5	Low temperature operation test	Ta = 0 °C, 240hrs
6	Thermal shock	Ta = -20 °C ↔ 60 °C (0.5 hr), 100 cycle
7	Vibration test (non-operating)	Frequency : 10 ~ 300 Hz, Sweep rate 10 min Gravity / AMP : 1.5 G Sine Period : X, Y, Z 30 min
8	Shock test (non-operating)	Gravity : 50G Pulse width : 11msec, Sine wave ± X, ± Y, ± Z Once for each direction
9	Electro-static discharge test	Air : ± 15kV , 50pF/330Ω ,100Point ,1time/Point Contact : ± 8kV , 150pF/330Ω ,100Point , 1time/Point

SPEC. NUMBER

SPEC. TITLE

PAGE

HV320WXC-300 Preliminary Product Specification

19 OF 27

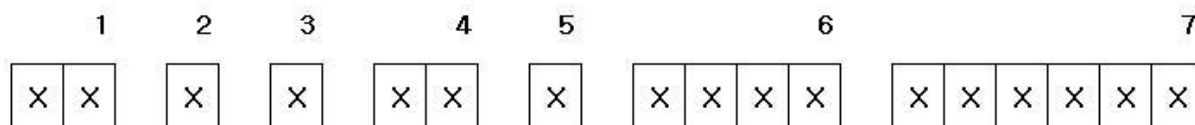
B2005-C001-O(3/3)

A4(210 X 297)



 京东方 BOE	PRODUCT GROUP	REV	ISSUE DATE
	TFT- LCD PRODUCT	P1	2011.03.11

9.0 Product Serial Number



Type

- No 1. Control
- No 2. Rank
- No 3. Line Classification(BOE HYDIS : H, LCM : L, BOE OT : A/B/C)
- No 4. Year(2001 : 01, 2002 : 02, ...)
- No 5. Month(1, 2, 3, ...,9 X, Y, Z)
- No 6. FG Code
- No 7. Serial No.

SPEC. NUMBER	SPEC. TITLE	PAGE
B2005-C001-O(3/3)	HV320WXC-300 Preliminary Product Specification	20 OF 27

B2005-C001-O(3/3)

A4(210 X 297)

 京东方 BOE	PRODUCT GROUP	REV	ISSUE DATE
	TFT- LCD PRODUCT	P1	2011.03.11

10.0 PACKING INFORMATION

BOE provides the standard shipping container for customers, unless customer specifies their packing information. The standard packing method and Barcode information are shown in below.

10.1 Packing Order

Put pads into the box



Put modules bundled with PE Bag into the box



Seal the box and stick label to the assigned area



Put cover pad on top of the box

SPEC. NUMBER	SPEC. TITLE	PAGE
B2005-C001-O(3/3)	HV320WXC-300 Preliminary Product Specification	21 OF 27

B2005-C001-O(3/3)

A4(210 X 297)



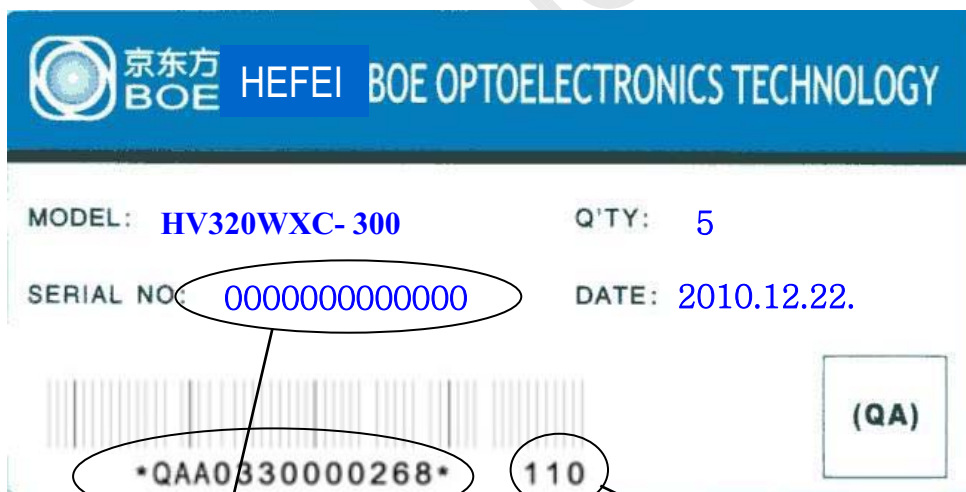
 京东方 BOE	PRODUCT GROUP	REV	ISSUE DATE
	TFT- LCD PRODUCT	P1	2011.03.11

10.2 Packing Note

- Box Dimension : 874 × 284 × 545 mm
- Package Quantity in one Box : 4pcs

10.3 Box label

- Label Size : 108 mm (L) 56 mm (W)
- Contents
 Model : HV320WXC
 Q`ty : Module Q`ty in one box
 Serial No. : Box Serial No. See next page for detail description.
 Date : Packing Date
 FG Code : FG Code of Product



<u>00</u>	<u>0</u>	<u>0</u>	<u>00</u>	<u>0</u>	<u>0</u>	<u>00000</u>
Type	Grade	Line	Year	Month	ITEM-CODE	Serial_no

FG CODE

SPEC. NUMBER	SPEC. TITLE	PAGE
B2005-C001-O(3/3)	HV320WXC-300 Preliminary Product Specification	22 OF 27

B2005-C001-O(3/3)

A4(210 X 297)



PRODUCT GROUP

REV

ISSUE DATE

TFT- LCD PRODUCT

P1

2011.03.11

11.0 HANDLING & CAUTIONS

- (1) Cautions when taking out the module
 - Pick the pouch only, when taking out module from a shipping package.
- (2) Cautions for handling the module
 - As the electrostatic discharges may break the LCD module, handle the LCD module with care. Peel a protection sheet off from the LCD panel surface as slowly as possible.
 - As the LCD panel and back - light element are made from fragile glass material, impulse and pressure to the LCD module should be avoided.
 - As the surface of the polarizer is very soft and easily scratched, use a soft dry cloth without chemicals for cleaning.
 - Do not pull the interface connector in or out while the LCD module is operating.
 - Put the module display side down on a flat horizontal plane.
 - Handle connectors and cables with care.
- (3) Cautions for the operation
 - When the module is operating, do not lose CLK, ENAB signals. If any one of these signals is lost, the LCD panel would be damaged.
 - Obey the supply voltage sequence. If wrong sequence is applied, the module would be damaged.
- (4) Cautions for the atmosphere
 - Dew drop atmosphere should be avoided.
 - Do not store and/or operate the LCD module in a high temperature and/or humidity atmosphere. Storage in an electro-conductive polymer packing pouch and under relatively low temperature atmosphere is recommended.
- (5) Cautions for the module characteristics
 - Do not apply fixed pattern data signal to the LCD module at product aging.
 - Applying fixed pattern for a long time may cause image sticking.
- (6) Other cautions
 - Do not disassemble and/or re-assemble LCD module.
 - Do not re-adjust variable resistor or switch etc.
 - When returning the module for repair or etc., Please pack the module not to be broken. We recommend to use the original shipping packages.

SPEC. NUMBER

SPEC. TITLE

PAGE

HV320WXC-300 Preliminary Product Specification

23 OF 27

B2005-C001-O(3/3)

A4(210 X 297)



PRODUCT GROUP

REV

ISSUE DATE

TFT- LCD PRODUCT

P1

2011.03.11

12.0 APPENDIX

Figure 1. Measurement Set Up

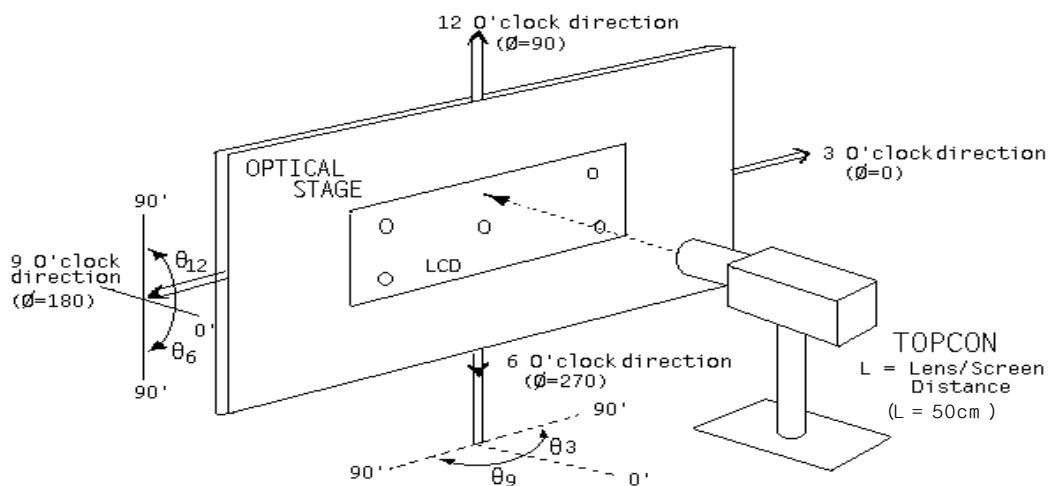
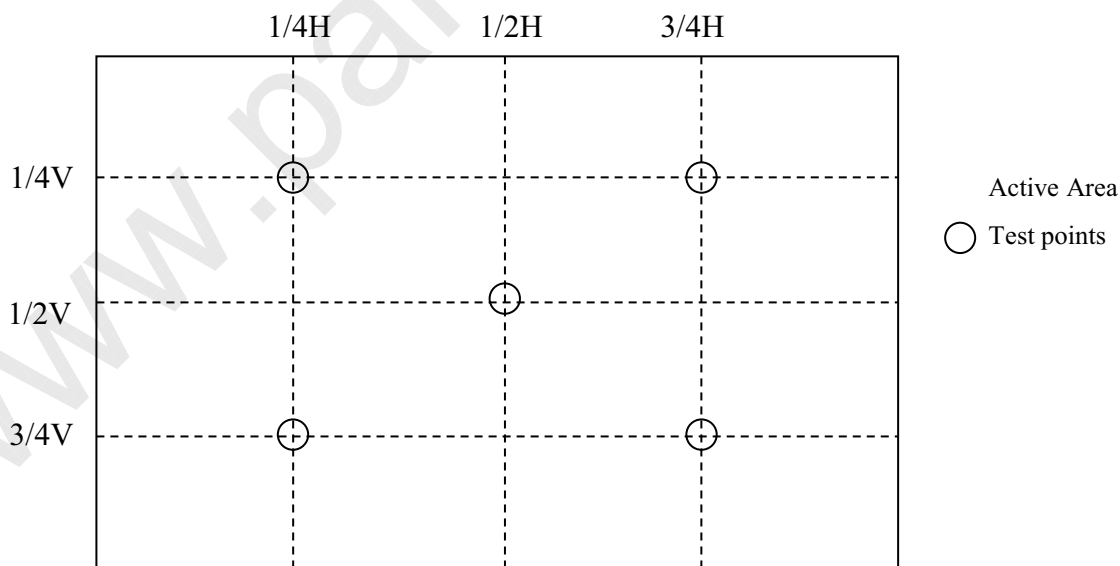


Figure 2. White Luminance and Uniformity Measurement Locations



SPEC. NUMBER

SPEC. TITLE

PAGE

HV320WXC-300 Preliminary Product Specification

24 OF 27

B2005-C001-O(3/3)

A4(210 X 297)



京东方
BOE

PRODUCT GROUP

TFT- LCD PRODUCT

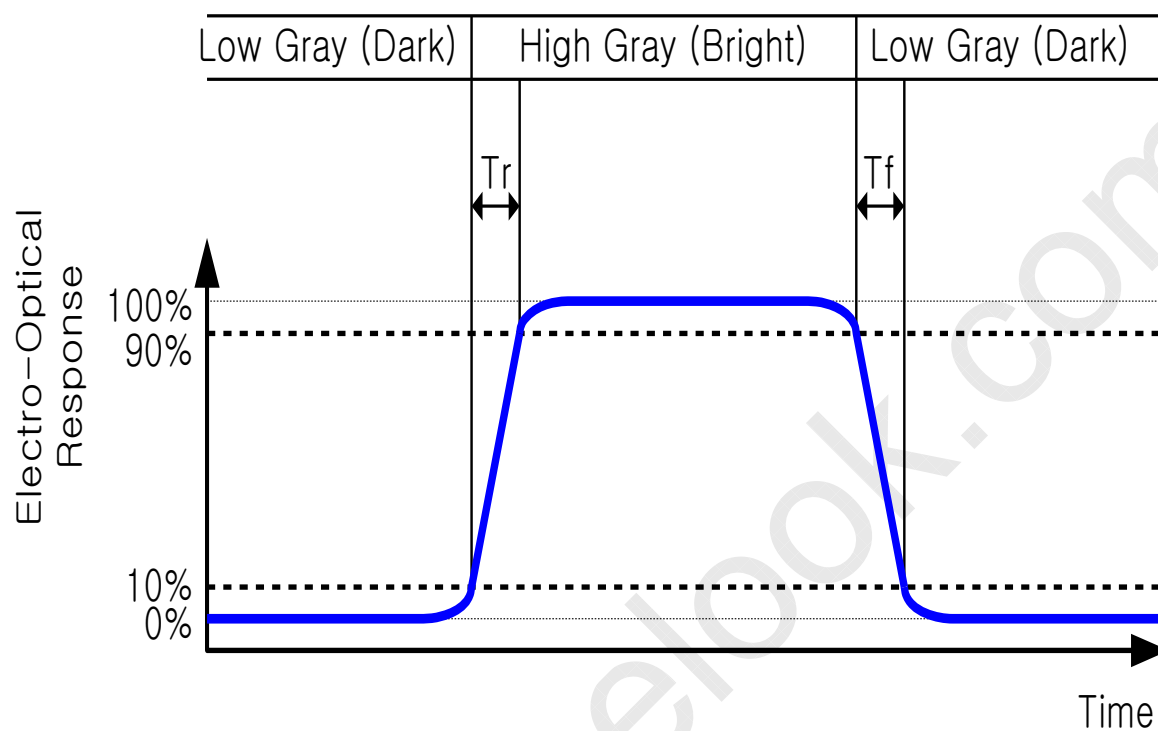
REV

P1

ISSUE DATE

2011.03.11

Figure 3. Response Time Testing



SPEC. NUMBER

SPEC. TITLE

HV320WXC-300 Preliminary Product Specification

PAGE

25 OF 27

B2005-C001-O(3/3)

A4(210 X 297)



PRODUCT GROUP

REV

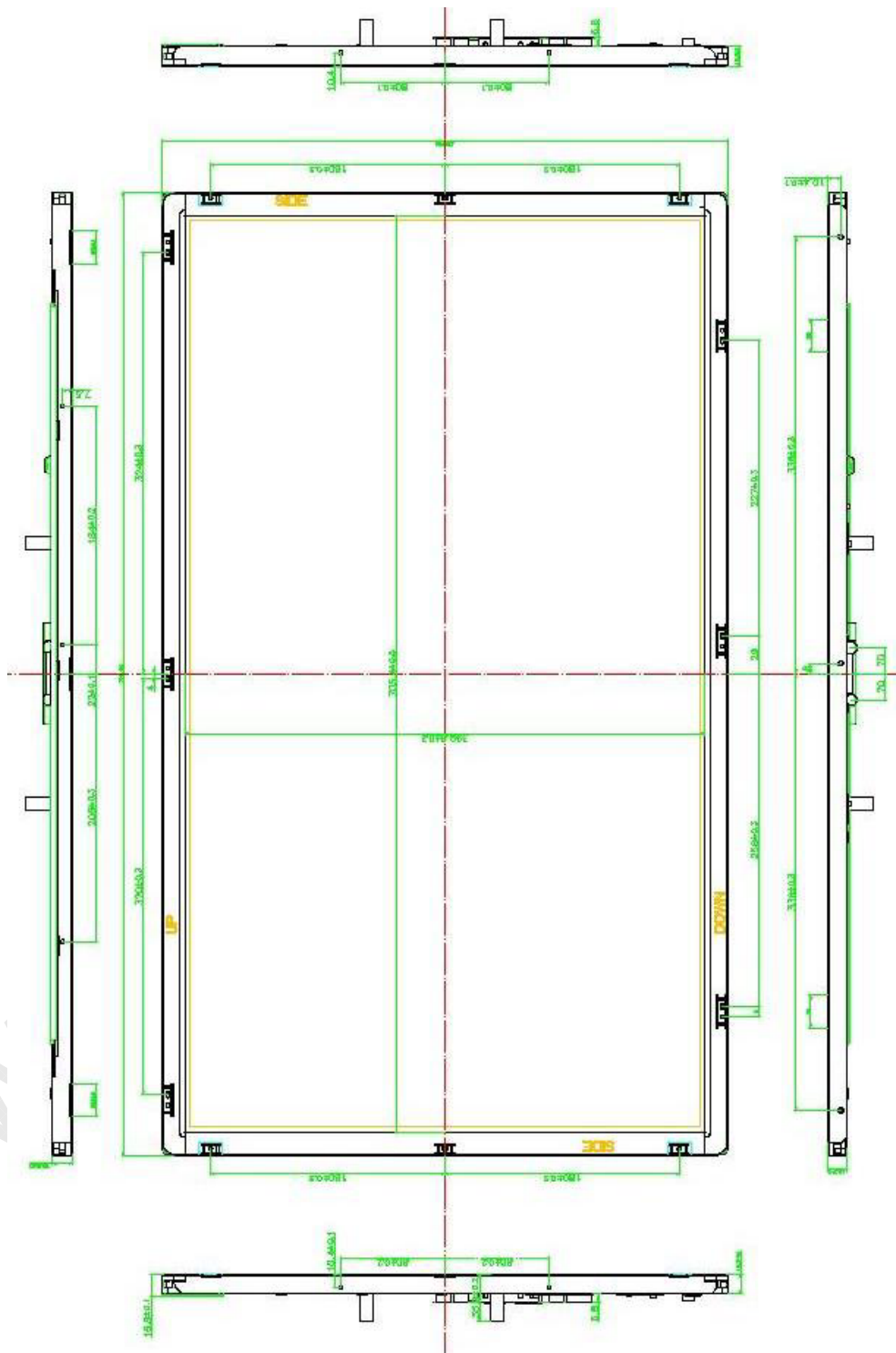
ISSUE DATE

TFT- LCD PRODUCT

P1

2011.03.11

Figure 4. TFT-LCD Module Outline Dimensions (Front view)



NOTE

- 1. Unspecified tolerances are to be ±1.0mm.
- 2. I/F CONNECTOR SPECIFICATION IS100-L30B-C23 or equivalent
- 3. INVERTER CONNECTOR SPECIFICATION Cvilux C10114M1HRL-LF or equivalent
- 4. USER MOUNTING TORQUE SPEC: 4~5kgf.cm

SPEC. NUMBER

SPEC. TITLE

PAGE

HV320WXC-300 Preliminary Product Specification

26 OF 27

B2005-C001-O(3/3)

A4(210 X 297)



PRODUCT GROUP

REV

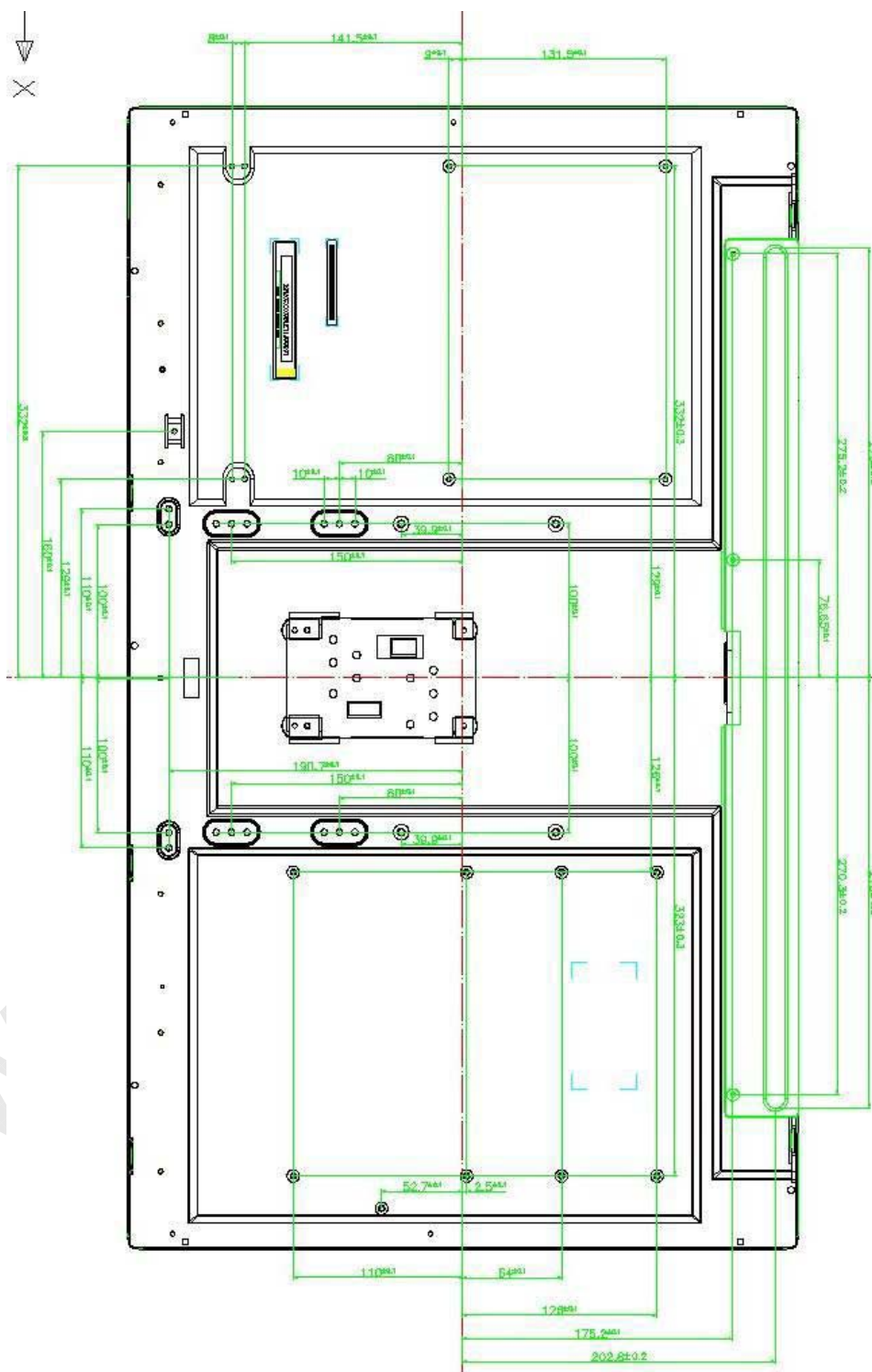
ISSUE DATE

TFT-LCD PRODUCT

P1

2011.03.11

Figure 5. TFT-LCD Module Outline Dimensions (Rear view)



SPEC. NUMBER

SPEC. TITLE

PAGE

HV320WXC-300 Preliminary Product Specification

27 OF 27

B2005-C001-O(3/3)

A4(210 X 297)