

HVC SERIES

UPGRADE

Low ESL, Rectangular Type

◆ **FEATURES**

- For Industrial equipment and in-vehicle inverter. (Module type)
- Direct mount on the semiconductor module.
- Low ESL design.
- Custom design is available.
- Quick delivery and low-cost in comparison with full-custom products.
- RoHS compliance.

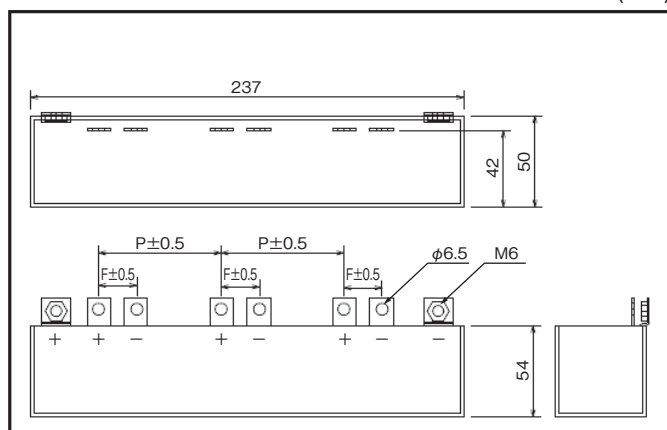


◆ **SPECIFICATIONS**

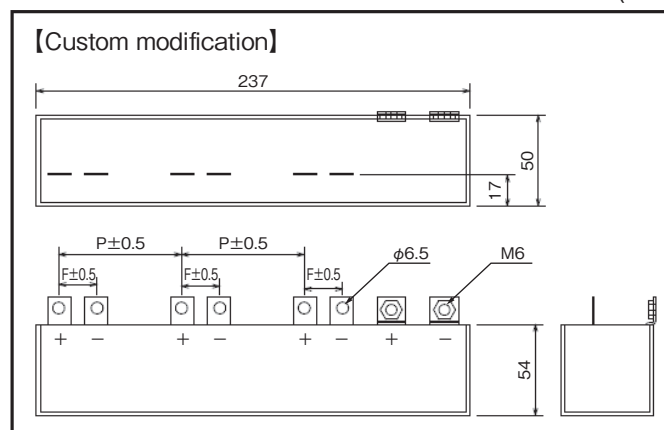
Category Temperature Range	-40°C~+105°C
Rated Voltage	450Vdc
Capacitance	500µF (1kHz)
Capacitance Tolerance	±10%(K)
tanδ	0.005Max (1KHz 25°C±5°C)
Permissible Current	150Arms (10kHz)
ESL	15nH Max
Voltage Proof	Between the terminals : Rated Voltage×1.5 10s
	Between the terminal and case : 2000Vdc 10s
Insulation Resistance	3000 Ω·F (20°C 120s 100Vdc)
Case	PPS Resin
Filling Resin	Epoxy Resin
Reference Standard	JIS C 5101-16 IEC 61071

◆ **OUTLINE**

(mm)



(mm)



◆ **PART NUMBER**

450
Rated Voltage
HVC
Series
507
Capacitance
K
Capacitance Tolerance
□□□
Option
L
Terminal Code

◆ **STANDARD SIZE**

Type	F dimension	P dimension	Part No.
Type-M	17.0mm	64.5mm	450HVC507KR80L
Type-I	21.0mm	67.1mm	450HVC507KR81L
Type-F	22.0mm	50.0mm	450HVC507KR82L
Type-R	28.0mm	50.0mm	450HVC507KR83L

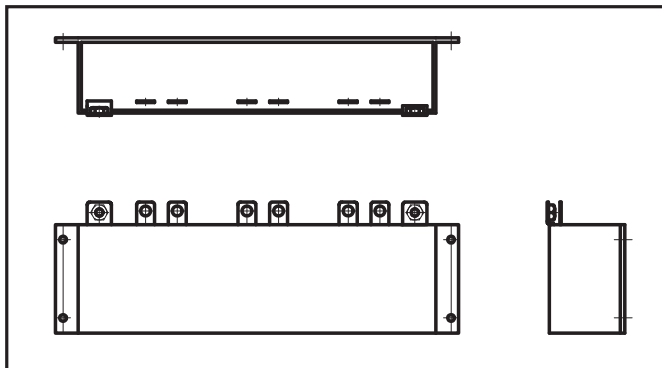
Full custom design / production other than in-vehicle inverter applications is available. Accommodating requests from a small number of samples to mass production. For details, please consult our sales offices.

【Full custom modifications】

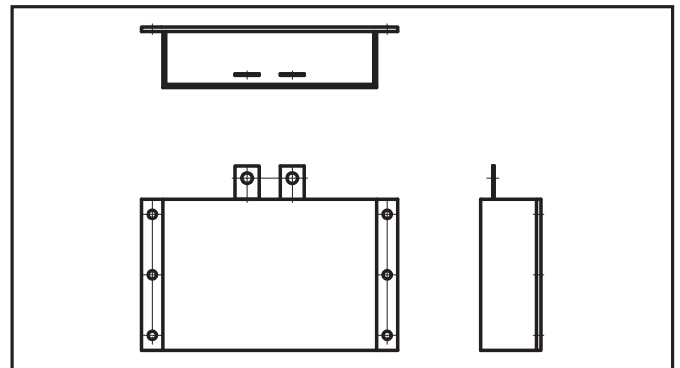
- Customize specifications
- Layout terminals on multiple surface
- Built-in resistance, Y capacitors etc.
- Built-in heatsink, shield plate etc.
- Add fixtures for mounting
- Built-in thermocouple, thermistor etc.
- Add stand etc. for the board mounting

◆ **CUSTOM OUTLINE EXAMPLES**

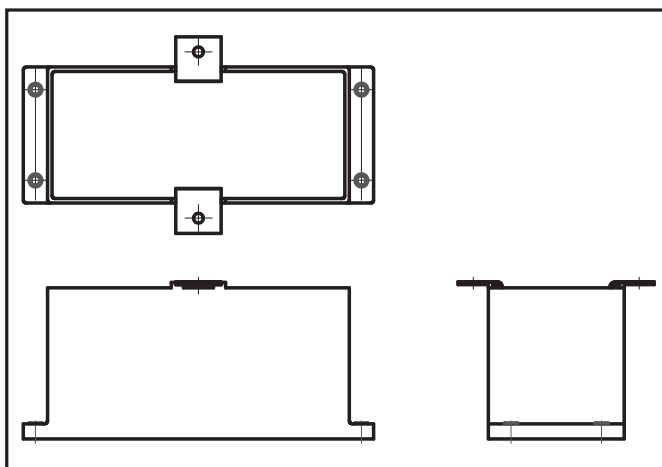
DC link



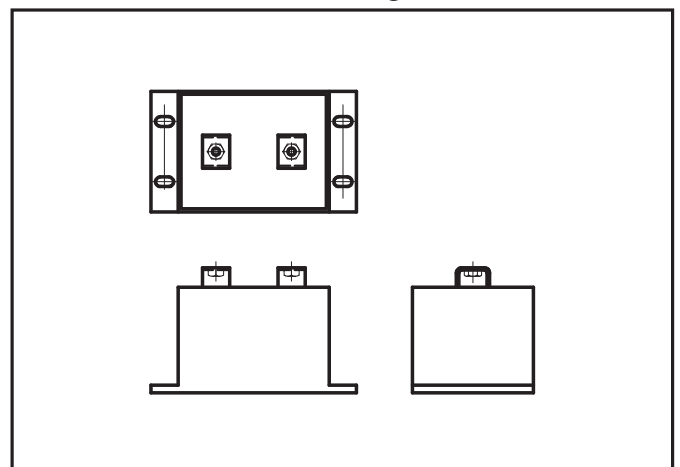
DC link



Filter



Smoothing



•Other custom examples

