

## GENERAL INFORMATION

Item	Contents	Unit
Driver element	a-Si 4.3 TFT active matrix	--
Viewing direction	IPS	--
TP V/A (W × H)	-----	mm
Active area (W×H)	56.16* 93.6 MM	mm
Number of Dots	480(RGB)×800	Pixel
Driver IC	HX8369B	--
Colors	16.7M	--
Weight	TBD	g
Backlight Type	LED	--
Interface Type	RGB16bit	--
Input voltage	2.8	V

## ABSOLUTE MAXIMUM RATINGS

Parameter	Symbol	Min	Max	Unit
Supply voltage for analog	VDD	-0.3	+6.0	V
Input voltage	VIN	-0.3	VDD+0.3	V
Operating temperature	TOP	-20	70	°C
Storage temperature	TST	-30	80	°C
Humidity	RH		90% (Max60°C)	RH

## ELECTRICAL CHARACTERISTICS

### DC CHARACTERISTICS

Parameter	Symbol	Min	Typ	Max	Unit
Supply voltage for analog	VDD	2.3	2.8/3.7	4.8	V
Input Current	I <sub>dd</sub>	—	—	—	mA
Supply voltage for I/O circuit	IOVCC	1.65	1.8	3.3	V
Input voltage 'H' level	V <sub>IH</sub>	0.7 IOVCC	—	—	V
Input voltage 'L' level	V <sub>IL</sub>	—	—	0.3 IOVCC	V
Output voltage 'H' level	V <sub>OH</sub>	0.8 IOVCC	—	—	V
Output voltage 'L' level	V <sub>OL</sub>	—	—	0.2 IOVCC	V

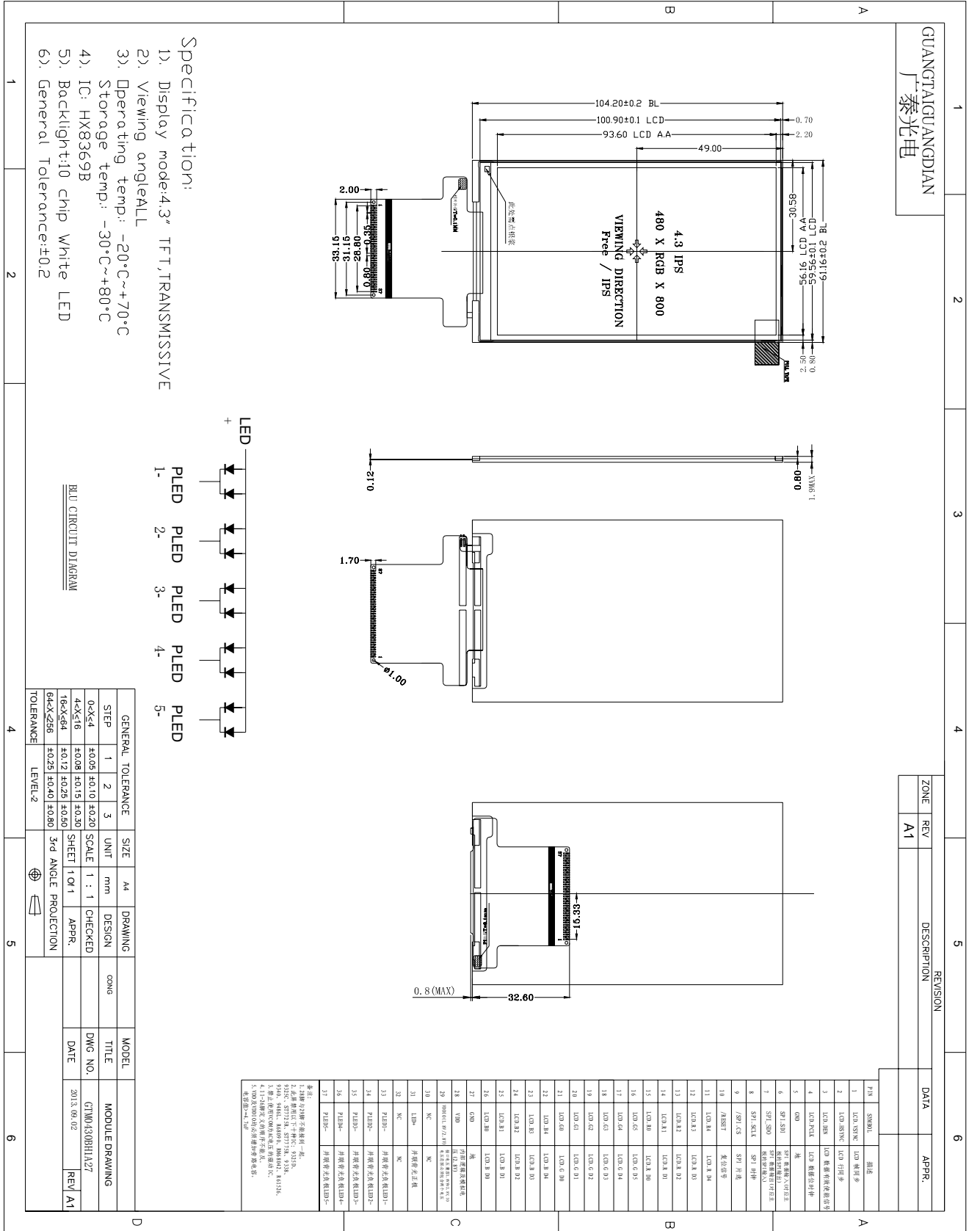
## TIMING OF POWER SUPPLY

PLEASE REFER TO THE DRIVER IC SPECIFICATION.

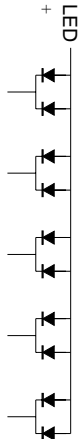
## BACKLIGHT CHARACTERISTICS

Item	Symbol	Min	Typ	Max	Unit	Condition
Forward voltage	V <sub>f</sub>	2.9	3.0	3.2	V	If=200mA
Luminance	L <sub>v</sub>	4000	—	—	cd/m <sup>2</sup>	
Number of LED	—	10			Piece	—
Connection mode	p	Parallel			—	—

# EXTERNAL DIMENSION



Specifications:  
 1). Display mode: 4.3" TFT, TRANSMISSIVE  
 2). Viewing angle: ALL  
 3). Operating temp.: -20°C~+70°C  
 Storage temp.: -30°C~+80°C  
 4). IC: HX8369B  
 5). Backlight: 10 Chip White LED  
 6). General Tolerance: ±0.2



GENERAL TOLERANCE		SIZE		DRAWING	CONG	MODEL
STEP	1	2	3			
0-X<4	±0.05	±0.10	±0.20	SCALE 1 : 1	CHECKED	
4-X<16	±0.08	±0.15	±0.30	SHEET 1 OF 1	APPR.	
16-X<64	±0.12	±0.25	±0.50	3rd ANGLE PROJECTION		
64-X<256	±0.25	±0.40	±0.80			

备注:  
 1. 请核对零件名称与物料表一致。  
 2. 零件名称与物料表不一致者, 请务必与物料表核对。  
 3. 零件名称与物料表不一致者, 请务必与物料表核对。  
 4. 1:1比例放大或缩小, 请务必与物料表核对。  
 5. 所有尺寸均以物料表为准, 请务必与物料表核对。  
 6. 所有尺寸均以物料表为准, 请务必与物料表核对。

ZONE		REV		DESCRIPTION	REVISION	
A1		A1			DATA	APPR.

PIN	SYMBOL	描述
1	I/O:SNV	I/O:帧同步
2	I/O:SNV	I/O:行同步
3	I/O:DBN	I/O:背光使能/背光管
4	I/O:VCC	I/O:帧输出使能
5	I/O:NC	NC
6	SP1:SD0	SP1:数据线/SP1:行
7	SP1:SD0	SP1:数据线/SP1:行
8	SP1:SD0	SP1:行/SP1:列
9	/SP1:CS	SP1:片选
10	/RST	复位信号
11	I/O:RST	I/O:RST
12	I/O:RST	I/O:RST
13	I/O:RST	I/O:RST
14	I/O:RST	I/O:RST
15	I/O:RST	I/O:RST
16	I/O:RST	I/O:RST
17	I/O:RST	I/O:RST
18	I/O:RST	I/O:RST
19	I/O:RST	I/O:RST
20	I/O:RST	I/O:RST
21	I/O:RST	I/O:RST
22	I/O:RST	I/O:RST
23	I/O:RST	I/O:RST
24	I/O:RST	I/O:RST
25	I/O:RST	I/O:RST
26	I/O:RST	I/O:RST
27	I/O:RST	I/O:RST
28	I/O:RST	I/O:RST
29	I/O:RST	I/O:RST
30	I/O:RST	I/O:RST
31	I/O:RST	I/O:RST
32	I/O:RST	I/O:RST
33	I/O:RST	I/O:RST
34	I/O:RST	I/O:RST
35	I/O:RST	I/O:RST
36	I/O:RST	I/O:RST
37	I/O:RST	I/O:RST

## Interface Signals

Pin No.	Symbol	Description
1	LCD-VSYNC	Vertical sync.signal in RGB interface mode
2	LCD-HSYNC	Horizontal sync. Signal in RGB interface mode
3	LCD-DEN	Data enable signal in RGB interface mode
4	LCD-PCLK	Pixel clock signal RGB interface mode
5	GND	Ground
6	SPI-SDI	Serial data input pin in serial interface operation.
7	SPI-SDO	Serial data output pin in serial interface operation.
8	SPI-SCLK	Serial data input pin in serial interface operation.
9	/SPI-CS	Chip select input pin
10	/RESET	Reset pin
11	LCD-R4	Red Data
12	LCD-R3	Red Data
13	LCD-R2	Red Data
14	LCD-R1	Red Data
15	LCD-R0	Red Data
16	LCD-G5	Green Data
17	LCD-G4	Green Data
18	LCD-G3	Green Data
19	LCD-G2	Green Data
20	LCD-G1	Green Data
21	LCD-G0	Green Data
22	LCD-B4	Blue Data
23	LCD-B3	Blue Data
24	LCD-B2	Blue Data
25	LCD-B1	Blue Data
26	LCD-B0	Blue Data
27	GND	Ground
28	VDD	Power supply (2.8V)
29	VDDIO	Power supply for interface(compatible 1.8V and 2.8V)
30	NC	NO connection
31	LED+	LED Positive
32	NC	NO connection
33-37	PLED1-~PLED5-	LED Negative