

# HY-3205

## Deuterium Triode Thyatron



### Description

The HY-3205 is a deuterium-filled, triode thyatron designed for grounded grid operation. The grounded grid configuration (Note 1) allows the tube to be operated at a higher peak current compared to a similar grounded cathode thyatron. The deuterium fill gas facilitates operation at a higher voltage and low to moderate pulse repetition rates as compared to similar thyatrons having a hydrogen fill gas. The relatively high pulse current is achieved while employing only free or forced air convection cooling. The tube is mounted by its grid mounting flange in any position.

### Specifications

#### Absolute Ratings

(Maximum)(Non-Simultaneous)

epy, Peak Forward Anode Voltage, kv (Notes 2, 3, 4).....	32 kv
ib, Peak Forward Anode Current, a (Notes 5, 6).....	20,000a
ibx, Peak Reverse Anode Current .....	Note 7
epx, Peak Reverse Anode Voltage, kv (Note 8).....	20 kv
Ib, Peak Average Anode Current, Adc .....	5 Adc
Ib, RMS Average Current , Aac (Note 9).....	47.5 Aac
Anode temperature, °C (Note 10).....	450 °C
Charge transfer per shot, (Note 11).....	10 Coulombs

## HY-3205

# Deuterium Triode Thyatron

### General Electrical Data

Ef, Cathode Heater Voltage, Vac .....	6.3±8%
If, Cathode Heater Current @ Ef=6.3 Vac, Aac .....	14.4 - 17.6
Er, Reservoir Heater Voltage, Vac ( <i>Note 12</i> ).....	6.3±8%
Ir, Reservoir Heater Current @ Er=6.3 Vac, Aac .....	2.4 - 3.3
Tk, Minimum Tube Warm-up Time, Minutes .....	10

### Trigger Driver Requirements

	MIN	TYP	MAX.
Egy, Peak Open Circuit Driver Voltage, Negative Going Applied to The Cathode, v.....	500	750	1500
Zg, Driver Circuit Output Impedance, Ohms.....	--	100	250
Driver Pulse Rise Time, ns.....	--	100	150
Driver Pulse Width, $\mu$ s.....	1	2	--
Peak Reverse Driver Voltage, v .....	--	--	--
Bias Voltage, Positive, V .....	--	--	300

### Triggering Characteristics

	MIN	TYP	MAX.
Anode Delay Time, $\mu$ s ( <i>Notes 13, 14</i> ).....	--	--	500
Anode Delay Time Drift, ns ( <i>Note 14</i> ).....	--	--	150
Time jitter, ns ( <i>Note 14</i> ).....	--	--	5
Current Rise Time, ns ( <i>Note 15</i> ).....	--	7	--

### Notes

1. This thyatron is designed to operate with the grid at chassis ground potential. The tube is driven into conduction by applying the triggering pulse to the cathode lead. Therefore, the limits shown for egy are negative while the bias voltage is positive (i.e., the opposite polarity of what would be the case for triggering a standard grounded cathode thyatron).
2. The dwell time at the peak anode voltage should be minimized in order to minimize pre-firing. For operation at the rated egy, the dwell time must not exceed 1 millisecond.
3. After thyatron anode current stops flowing and before voltage is reapplied to the anode, the anode voltage must stay between 0 and -500 volts for at least 100  $\mu$ s to allow the gas to deionize.
4. This tube may be operated in air at up to 32 kv. Some of the more important derating factors that determine the safe operating voltage in air are the cleanliness of the tube's ceramic insulators, the rate of rise of anode voltage, the dwell time at the operating peak anode voltage, the pulse repetition rate, and ambient pressure, temperature, humidity and contaminant level. This tube may also be operated while immersed in an insulating gas or liquid.
5. The peak current capability of 20,000 amperes applies to low duty, short discharge duration (shorter than 150 nanoseconds) applications without significant reverse current.
6. For anode current discharges longer than 150 nanoseconds or for discharge waveforms which exhibit significant current reversals use the charge transfer per shot limitation for determination of the allowable peak current capability.
7. This tube is recommended for applications where the discharge current waveform has reversals. Each time the current reverses, the magnitude of the current on that reversal must not exceed 60% of the magnitude of the current on the half cycle immediately preceding it.
8. The reverse anode voltage shown applies for a previously nonconducting tube. Exclusive only of a spike not longer than 25 nanoseconds, the peak reverse anode voltage must not exceed 5kv during the first 50 microseconds after conduction.

## Deuterium Triode Thyatron

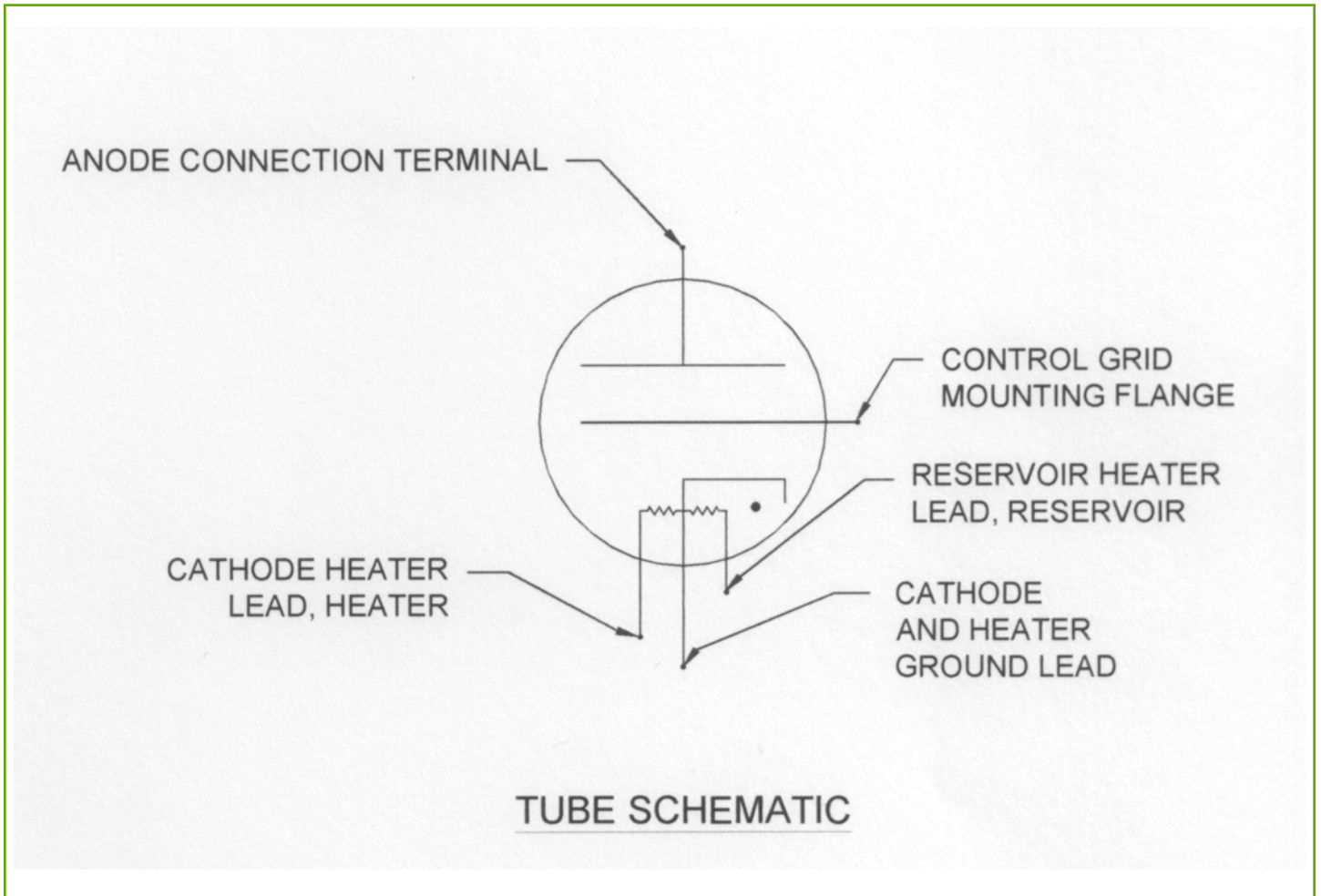
### Notes (cont.)

9. The root mean square anode current shall be computed as the square root of the product of the peak current and the absolute average current when the reverse current is negligible. For cases where the reverse current is significant (i.e., where it exceeds 10% of forward current), this simple relationship for calculation of the RMS current does not apply.
10. Forced air liquid immersion cooling should always be used in any situation where cooling by natural convection is insufficient to keep the temperature of the tube's envelope below 200°C. The anode temperature, measured on the external anode surface, should not be allowed to exceed the value shown.
11. The charge transfer per shot includes the total charge conducted through the thyatron on that shot regardless of the direction of the flow of the charge. In other words it is the time integral of the magnitude of the current over the duration of the discharge.
12. The optimum reservoir heater voltage is that which provides the best overall compromise among anode heating, anode voltage holdoff and holdoff recovery, anode current rise rate, and the tube's overall triggering characteristics. For the most applications, the optimum reservoir heater voltage lies between 90% and 110% of the nominal value. Operation at voltages below 90% of nominal can result in permanent damage from anode overheating; operation at high reservoir heater voltages degrades anode holdoff and holdoff recovery, and can permanently damage the reservoir itself.
13. The anode delay time is measured from the 25% point on the rise of the unloaded grid voltage pulse to the 10% point on the rise of the anode current pulse.
14. Delay time, delay time drift and time jitter may be simultaneously minimized by applying the maximum driver voltage (egy) from a source of low impedance ( $Z_g$ ).
15. The current rise time is a function of the discharge circuit impedance. If care is exercised to reduce the inductance in the circuit, a typical rise time on the order of that shown may be expected when using this thyatron.
16. All data and specifications are subject to change without notice.
17. Data sheet origination date is shown on the front page. This data sheet becomes obsolete when more recent revisions are published.

HY-3205

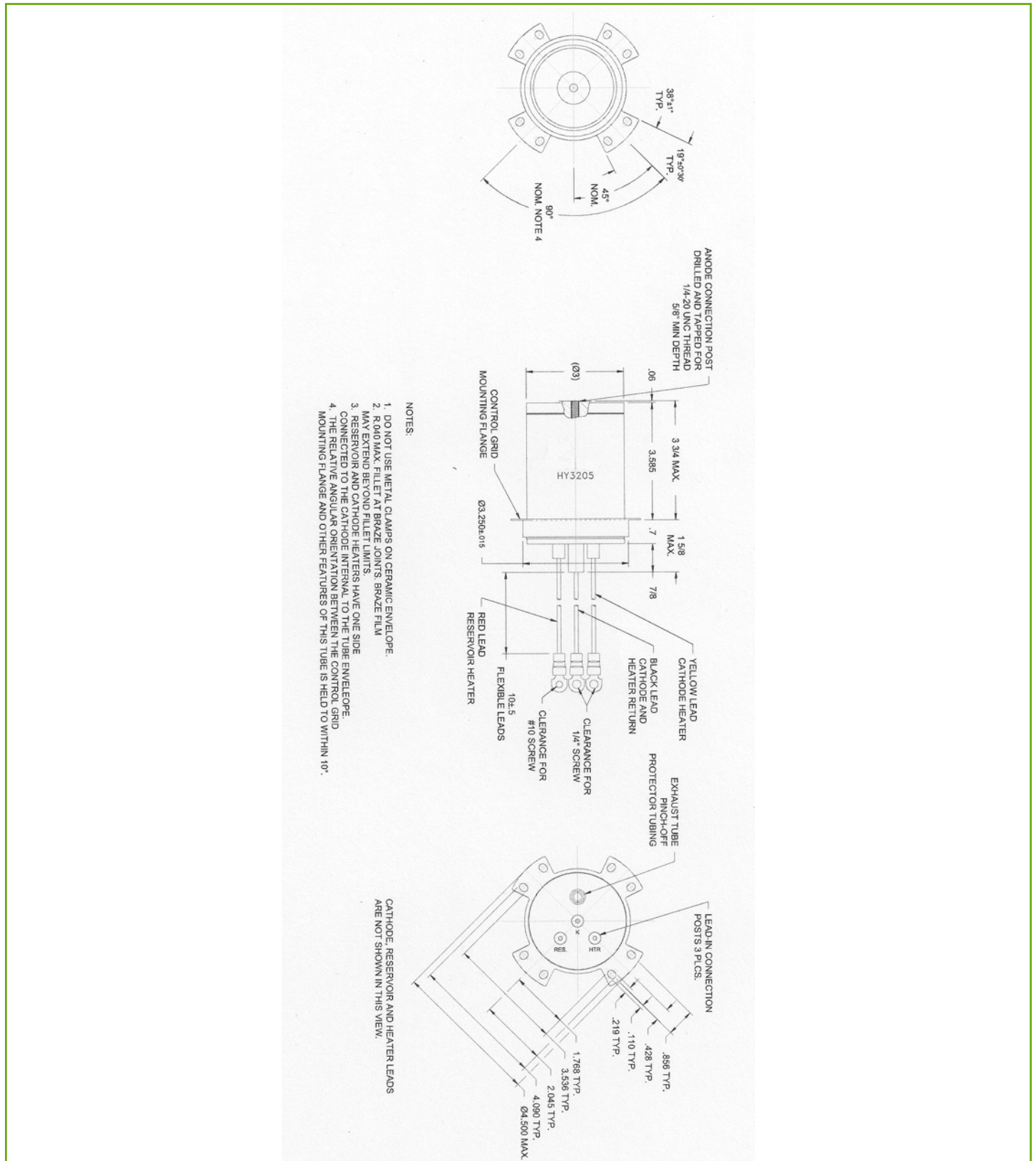
## Deuterium Triode Thyatron

FIGURE 1 Schematic



# HY-3205 Deuterium Triode Thyatron

FIGURE 2 Schematic



HY-3205

## Deuterium Triode Thyatron

### About Excelitas Technologies

Excelitas Technologies is a global technology leader focused on delivering innovative, customized solutions to meet the lighting, detection, energetic, frequency standards and high-reliability power needs of OEM customers.

From aerospace and defense applications to industrial, safety and security, medical lighting, analytical instrumentation, and clinical diagnostics, Excelitas Technologies is committed to enabling our customers' success in their specialty end-markets. Excelitas Technologies has approximately 3,000 employees in North America, Europe and Asia, serving customers across the world.

[AES@excelitas.com](mailto:AES@excelitas.com)  
[www.excelitas.com](http://www.excelitas.com)

**Excelitas Technologies**  
Energetic Systems  
1100 Vanguard Blvd.  
Miamisburg, Ohio 45432  
USA  
Telephone: (+1) 937.865.3800  
Toll Free: (+1) 866.539.5916  
Fax: (+1) 937.865.5170

**Excelitas Technologies**  
Power Supplies  
1330 East Cypress Street  
Covina, California 91724 USA  
Telephone: (+1) 626.967.6021  
Toll Free: (+1) 800.363.2095  
Fax: (+1) 626.967.3151

**Excelitas Technologies**  
Frequency Standards  
& Switching  
35 Congress Street  
Salem Massachusetts 01970  
USA  
Telephone: (+1) 978.745.3200  
Toll Free: (+1) 800.950.3441  
Fax: (+1) 978.745.0894

**Excelitas Technologies**  
Lighting & Radiant Sources  
44370 Christy Street  
Fremont, California 94538-3180  
USA  
Telephone: (+1) 510.979.6500  
Toll Free: (+1) 800.775.6786  
Fax: (+1) 510.687.1140

**Excelitas Technologies**  
Sensors  
22001 Dumberry Road  
Vaudreuil-Dorion, Quebec  
Canada J7V 8P7  
Telephone: (+1) 450.424.3300  
Toll Free: (+1) 800.775.6786  
Fax: (+1) 450.424.3345

**Excelitas Technologies**  
International Sales Office  
Bat HTDS BP 246, 91882  
Massy Cedex, France  
Telephone: +33 (1) 6486 2824

For a complete listing of our global offices, visit [www.excelitas.com/ContactUs](http://www.excelitas.com/ContactUs)

©2011, Excelitas Technologies Corp. All rights reserved. The Excelitas logo and design are registered trademarks of Excelitas Technologies Corp. All other trademarks not owned by Excelitas Technologies or its subsidiaries that are depicted herein are the property of their respective owners. Excelitas reserves the right to change this document at any time without notice and disclaims liability for editorial, pictorial or typographical errors.

**EXCELITAS**  
TECHNOLOGIES

HY-3205 Deuterium Triode Thyatron, Page 6 of 6