

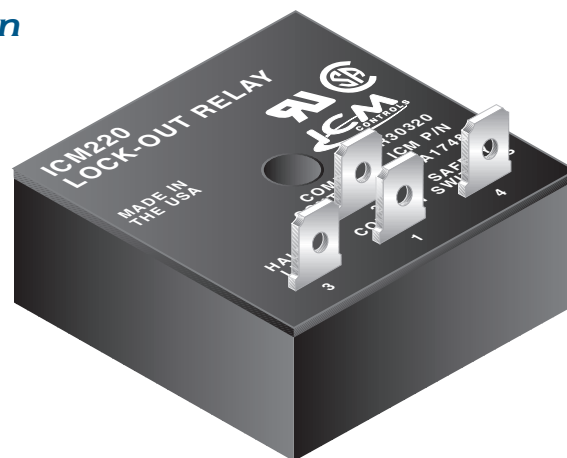
ICM220 LOCKOUT PROTECTION RELAY



The ICM220 is a low cost lockout protection module that helps eliminate nuisance lockouts due to impedance relay failure.

Features

- Low cost lockout relay
- Safety switch monitoring
- Alarm output during lockout
- Helps eliminate nuisance lockouts
- Replaces impedance relays 83 and 93



Mode Of Operation

Upon application of power with the safety switches closed, the load will energize. If any of the safety switches open for longer than 600 ms, the fault light will come on and the load will stay de-energized regardless of the state of the safety switches. Power must then be removed for 100 ms and safety switches must be closed in order to reenergize the load, upon which the fault light will be off.

Specifications

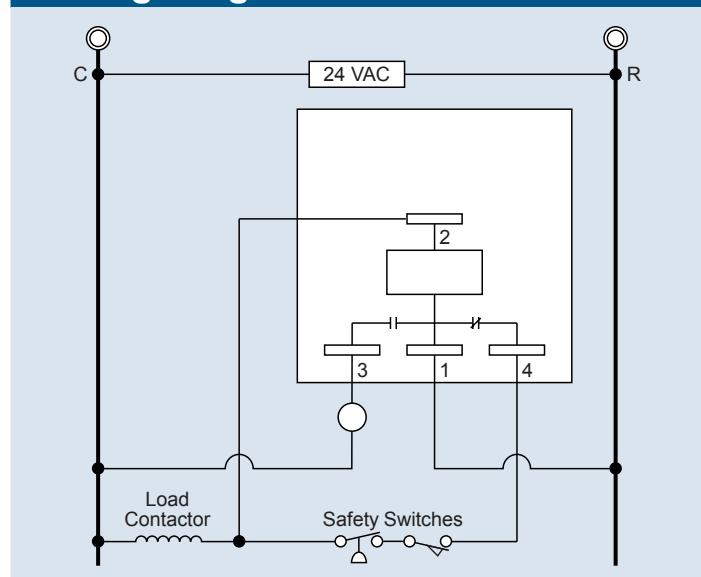
Input

- **Voltage:** 18 to 30 VAC
- **Frequency:** 50 to 60 Hz

Output

- **Relay:** SPDT
- **Relay Contacts:** 2 amps maximum @ 30 VAC resistive
- **Power Consumption:** 2 watts maximum during lockout

Wiring Diagram



Dimensions

