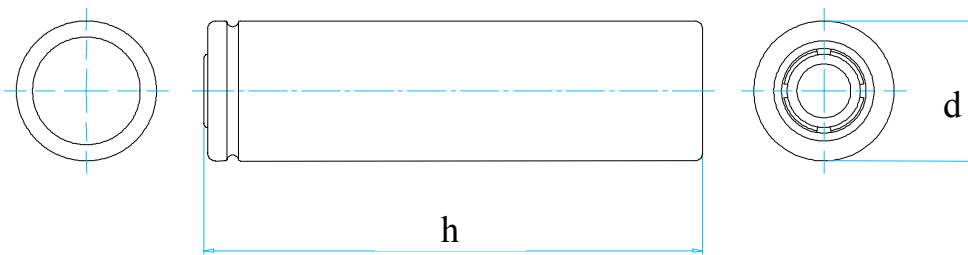


Preliminary Data Sheet



Nominal Voltage:	3.7 V	Height	h. 65.0	mm
Rated Capacity (0.2C / 2.75 V):	2150 mAh	Diameter	d. 18.3	-0.6 mm
Typical Capacity (0.2C / 2.75 V):	2200 mAh			-0.4

www.DataSheet4U.com

Max Charge Voltage:	4.20 V	Volume:	16.83 cm ³
Max Charge Current:	2200 mA	Weight, approx:	46 g
Max Discharge Current:	4000 mA	Energy Density:	484 Wh/l
Impedance AC at 1kHz, fully charged:	100 mOhm	Specific Energy:	177 Wh/kg

Charge Conditions at:

Standard Charge:	1100mA 3h
Fast Charge:	2200mA 2.5h

Life Expectancy at Cycling:

>300 cycles (0.5C/0.5C): >70% of rated capacity

Temperatures:

Storage: -20 up to +60°C	1 month
Storage: -20 up to +45°C	3 month
Storage: -20 up to +20°C	1 year
Charge:	0°C ... 45°C
Discharge:	-20°C ... 60°C

All data contained herein is for single cells.

For battery applications, performance data may vary from single cell data, depending on specific battery configuration.