

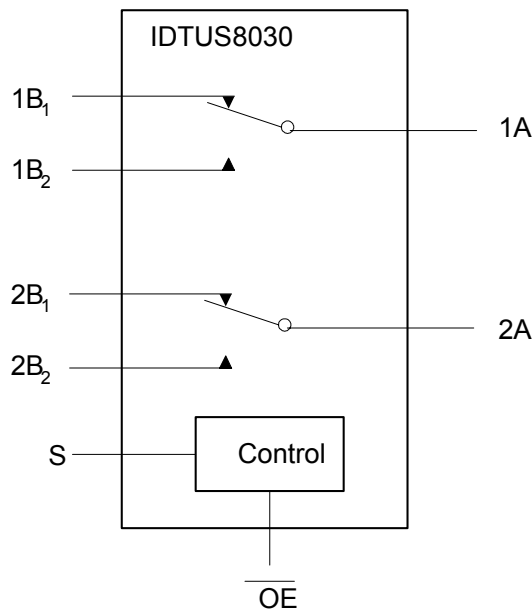
**Description**

The IDTUS8030 is a low power, dual SPDT 2-port hi-speed USB 2.0 switch. This part is configured as a single pole, double throw switch and is optimized for switching or isolating a hi-speed (480 Mbps) source or a hi-speed and full-speed (12 Mbps) source. The IDTUS8030 is compatible with the requirements of USB2.0 and features an extremely low ON capacitance ( $C_{ON}$ ) of 3.7 pF. The wide bandwidth of this device (>720 MHz) exceeds the bandwidth needed to pass the 3rd harmonic, resulting in signals with minimum edge and phase distortion. Superior channel-to-channel crosstalk also minimizes interference.

**Applications**

- Notebooks, PDAs
- Cellular phones, Digital cameras
- LCD monitors, TVs, Set-top Boxes

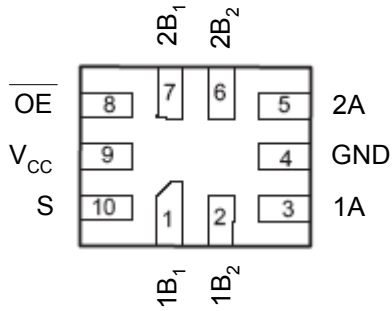
**Block Diagram**



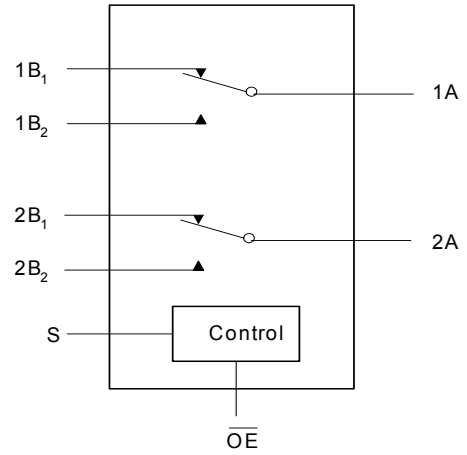
**Features**

- Low On capacitance, 3.7 pF (typical)
- Low On resistance, 6.5Ω (typical)
- Low power consumption (1 μA maximum)
  - 10 μA maximum ICCT over an expanded control voltage range ( $V_{IN}=2.6\text{ V}$ ,  $V_{CC}=4.3\text{ V}$ )
- Wide -3dB bandwidth, > 850 MHz
- Bi-directional operation
- 8 kV ESD protection
- Packaged in RoHS compliant 10-lead μMLP (1.4 x1.8mm)
- Industrial temperature range (-40 to +85°C)

### Pin Assignment (10 μMLP)



### Analog Symbol



### Truth Table

S	$\overline{OE}$	Function
X	H	Disconnect
L	L	A = B <sub>1</sub>
H	L	A = B <sub>2</sub>

### Pin Descriptions

Pin Name	Pin Description
$\overline{OE}$	Bus switch enable
S	Select Input
A	Bus A
B <sub>1</sub> , B <sub>2</sub>	Bus B

## Absolute Maximum Ratings

Stresses above the ratings listed below can cause permanent damage to the IDTUS8030. These ratings, which are standard values for IDT commercially rated parts, are stress ratings only. Functional operation of the device at these or any other conditions above those indicated in the operational sections of the specifications is not implied. Exposure to absolute maximum rating conditions for extended periods can affect product reliability. Electrical parameters are guaranteed only over the recommended operating temperature range. All voltages referenced to ground.

Symbol	Parameter	Rating
$V_{CC}$	Supply Voltage	-0.5 V to 4.6 V
$V_{CNTRL}$	DC Input Voltage <sup>1</sup>	-0.5 V to 4.6 V
$V_{SW}$	DC Switch Voltage <sup>1</sup>	-0.5 V to $V_{CC} + 0.3$ V -0.5 V to 5.25 V
$I_{IK}$	DC Input Diode Current	-50 mA
$I_{OUT}$	DC Output Current	50 mA
$T_{STG}$	Storage Temperature	-65°C to 150°C
ESD	ESD (Human Body Mode) All Pins I/O to GND	8.0 kV 8.0 kV

## Recommended Operating Conditions <sup>2</sup>

Symbol	Parameter	Rating
$V_{CC}$	Supply Voltage	3.0 V to 4.3 V
$V_{SW}$	Switch Voltage	0V to $V_{CC}$
$V_{IN}$	Control Input Voltage	0V to $V_{CC}$
$T_A$	Operating Temperature	-40°C to +85°C

Note 1: The input and output negative voltage ratings may be exceeded if the input and output diode current ratings are observed. DC switch voltage may never exceed 4.6V

Note 2: Control input must be held HIGH or LOW and it must not float.

## DC Electrical Characteristics

Unless stated otherwise, typical values are at 25°C

Symbol	Parameter	Conditions	V <sub>CC</sub> (V)	T <sub>A</sub> = -40°C to +85°C			Units
				Min.	Typ.	Max.	
V <sub>IK</sub>	Clamp Diode Voltage	I <sub>IN</sub> = -18 mA	3.0			-1.2	V
V <sub>IH</sub>	Input Voltage HIGH		3.0 to 3.6	1.3			V
			4.3	1.7			
V <sub>IL</sub>	Input Voltage LOW		3.0 to 3.6			0.5	V
			4.3			0.7	
I <sub>IN</sub>	Control Input Leakage	V <sub>SW</sub> = 0V to V <sub>CC</sub>	4.3	-1.0		1.0	μA
I <sub>OZ</sub>	OFF State Leakage	0 ≤ D <sub>n</sub> , HSD1 <sub>n</sub> , HSD2 <sub>n</sub> ≤ V <sub>CC</sub>	4.3	-2.0		2.0	μA
I <sub>OFF</sub>	Power OFF Leakage Current (D+, D-)	V <sub>SW</sub> = 0V to 4.3 V V <sub>CC</sub> = 0V	0	-2.0		2.0	μA
R <sub>ON</sub>	Switch On Resistance <sup>1</sup>	V <sub>SW</sub> = 0.4 V, I <sub>ON</sub> = -8 mA	3.0		6.5	10.0	Ω
		V <sub>SW</sub> = 0V, I <sub>O</sub> = 30 mA @ 25°C	3.6			7.0	
ΔR <sub>ON</sub>	Delta R <sub>ON</sub> <sup>2</sup>	V <sub>SW</sub> = 0.4 V, I <sub>ON</sub> = -8 mA	3.0		0.35	1	Ω
R <sub>ON</sub> Flatness	R <sub>ON</sub> Flatness <sup>1</sup>	V <sub>SW</sub> = 0V to 1.0 V, I <sub>ON</sub> = -8 mA	3.0		2.0		Ω
I <sub>CC</sub>	Quiescent Supply Current	V <sub>CNTRL</sub> = 0V or V <sub>CC</sub> , I <sub>OUT</sub> = 0	4.3		1.0		μA
I <sub>CCT</sub>	Increase in I <sub>CC</sub> Current per Control voltage and V <sub>CC</sub> levels	V <sub>CNTRL</sub> (Control Input) = 2.6 V	4.3			10.0	μA

### Notes:

- Measured by the voltage drop between A and B pins at the indicated current through the switch. On Resistance is determined by the lower of the voltage on the two pins.
- Guaranteed by design.

## AC Electrical Characteristics

Unless stated otherwise, typical values are for V<sub>CC</sub> = 3.3 V at 25°C

Symbol	Parameter	Conditions	V <sub>CC</sub> (V)	T <sub>A</sub> = -40°C to +85°C			Units
				Min.	Typ.	Max.	
t <sub>ON</sub>	Turn ON Time S, $\overline{OE}$ to output	V <sub>IN</sub> = 0.8 V, R <sub>L</sub> = 50Ω, C <sub>L</sub> = 5 pF	3.0 to 3.6		13.0	30.0	ns
t <sub>OFF</sub>	Turn OFF Time S, $\overline{OE}$ to output	V <sub>IN</sub> = 0.8 V, R <sub>L</sub> = 50Ω, C <sub>L</sub> = 5 pF	3.0 to 3.6		12.0	25.0	ns
t <sub>PD</sub>	Propagation Delay <sup>1</sup>	R <sub>L</sub> = 50Ω, C <sub>L</sub> = 5 pF	3.3		0.25		ns
T <sub>BMM</sub>	Break-Before-Make	V <sub>IN</sub> = 0.8 V, R <sub>L</sub> = 50Ω, C <sub>L</sub> = 5 pF	3.0 to 3.6	2.0		6.5	ns
O <sub>IRR</sub>	OFF Isolation (non-adjacent)	R <sub>T</sub> = 50Ω, f = 240 MHz	3.0 to 3.6		-30.0		dB
Xtalk	Non-adjacent Channel Crosstalk	R <sub>T</sub> = 50Ω, f = 240 MHz	3.0 to 3.6		-45.0		dB
BW	-3dB Bandwidth	R <sub>T</sub> = 50Ω, C <sub>L</sub> = 0 pF	3.0 to 3.6		850		MHz
		R <sub>T</sub> = 50Ω, C <sub>L</sub> = 5 pF			650		

**Note 1:** Guaranteed by design.

## USB Hi-Speed Related AC Electrical Characteristics

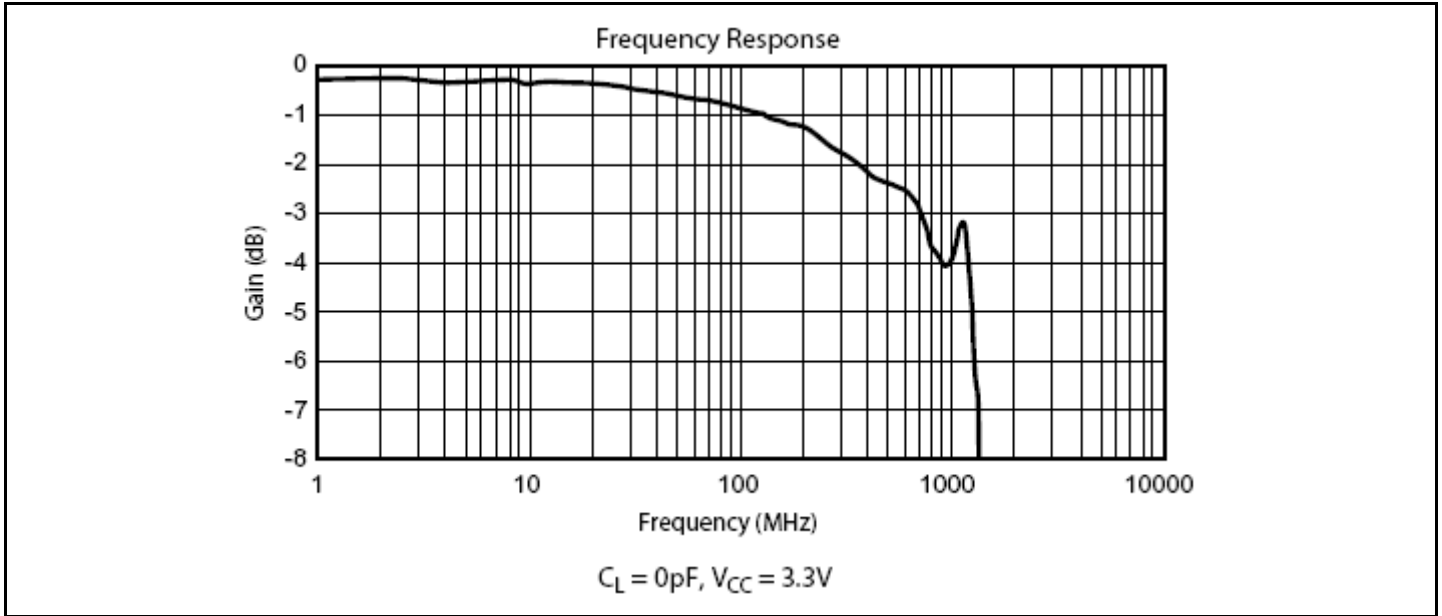
Symbol	Parameter	Conditions	V <sub>CC</sub> (V)	T <sub>A</sub> = -40°C to +85°C			Units
				Min.	Typ.	Max.	
t <sub>SK(O)</sub>	Channel-to-channel Skew <sup>1</sup>	C <sub>L</sub> = 5 pF, R <sub>L</sub> = 50Ω	3.0 to 3.6		50.0		ps
t <sub>SK(P)</sub>	Skew of the Opposite Transitions of the Same Output <sup>1</sup>	C <sub>L</sub> = 5 pF, R <sub>L</sub> = 50Ω	3.0 to 3.6		20.0		ps
t <sub>J</sub>	Total Jitter <sup>1</sup>	R <sub>L</sub> = 50Ω, C <sub>L</sub> = 5 pF, t <sub>R</sub> = t <sub>F</sub> = 500 ps at 480 Mbps (PRBS = 2 <sup>15</sup> - 1)	3.0 to 3.6		200		ps

**Note 1:** Guaranteed by design.

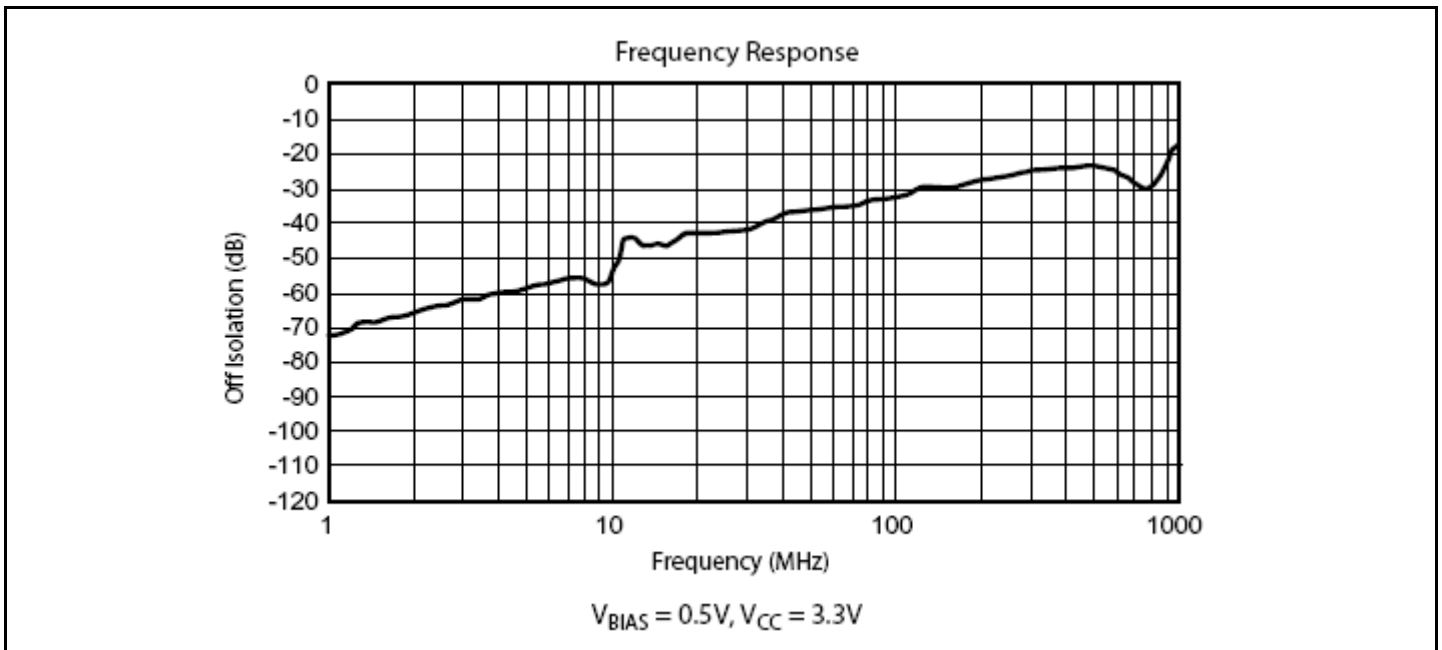
## Capacitance

Symbol	Parameter	Conditions	T <sub>A</sub> = -40°C to +85°C			Units
			Min.	Typ.	Max.	
C <sub>IN</sub>	Control Pin Input Capacitance	V <sub>CC</sub> = 0V		1.5		pF
C <sub>ON</sub>	A and B ON Capacitance	V <sub>CC</sub> = 3.3, $\overline{OE}$ = 0V		3.7		pF
C <sub>OFF</sub>	Port B OFF Capacitance	V <sub>CC</sub> and $\overline{OE}$ = 3.3		2.5		pF

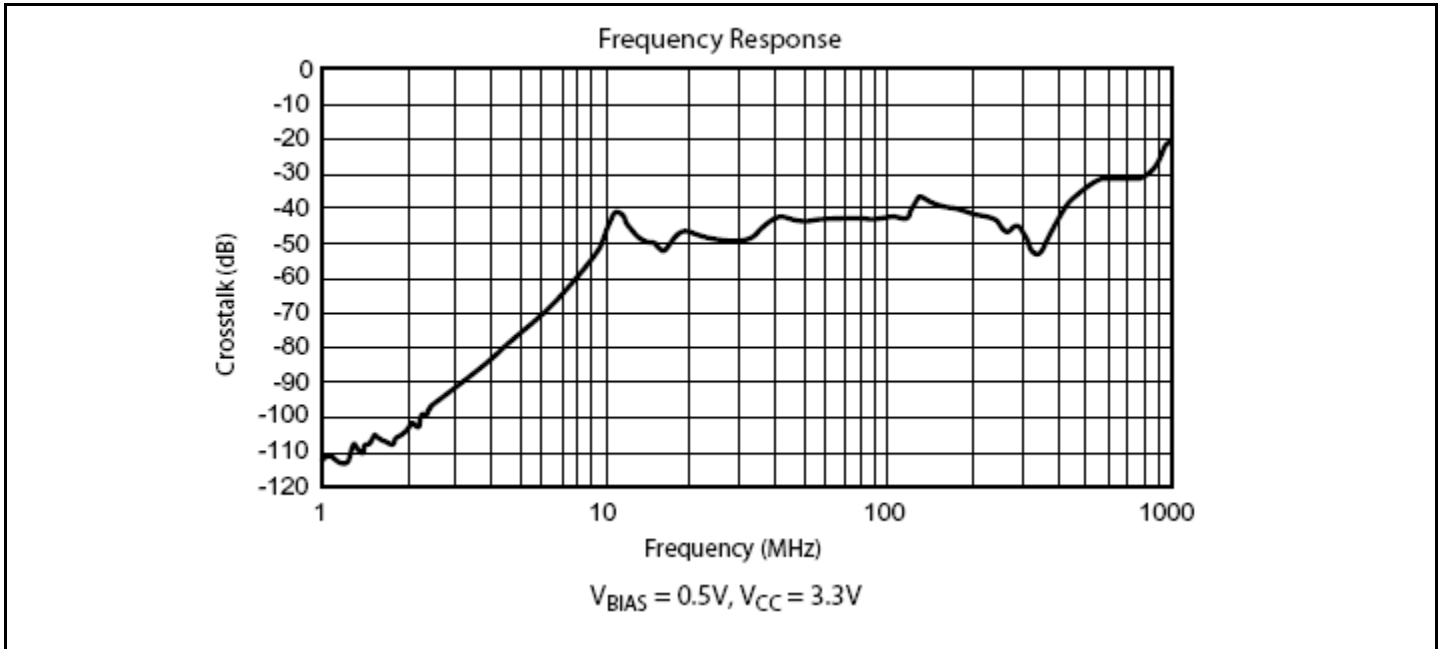
### Test Circuits and Timing Diagrams



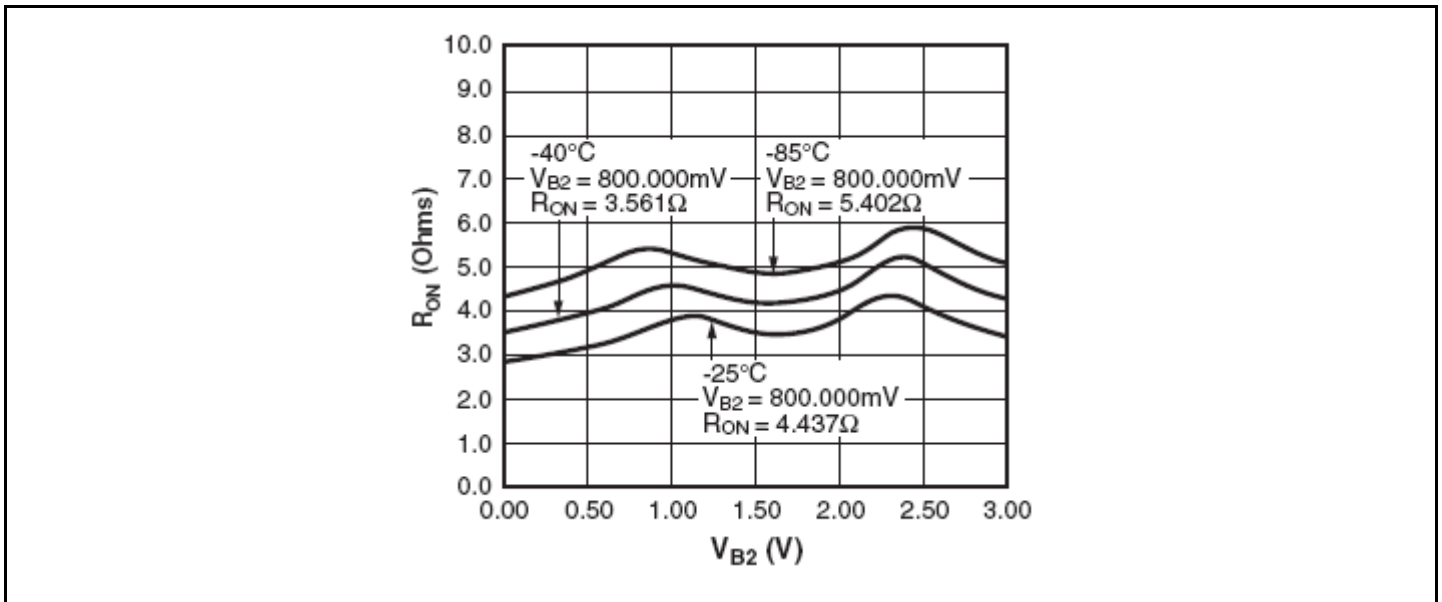
**Gain vs. Frequency**



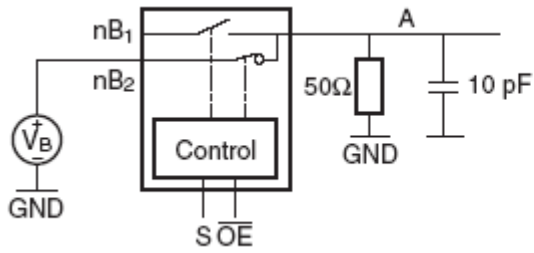
**OFF Isolation**



**Crosstalk**



**On Resistance**

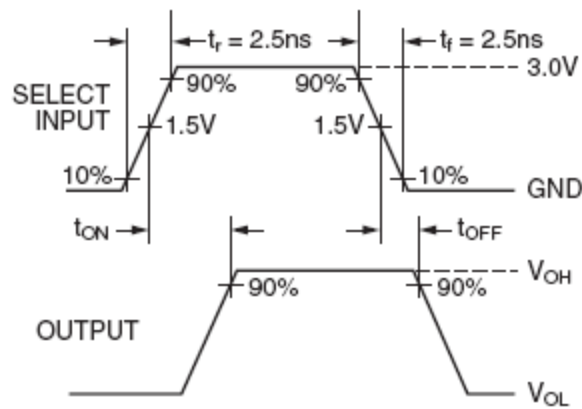


**Note:** Input driven by 50Ω source terminated in 50Ω

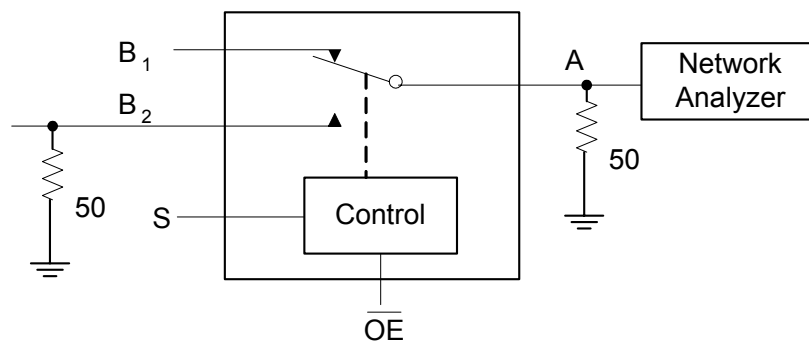
**Note:**  $C_L$  includes load and stray capacitance

**Note:** Input PRR = 1.0 MHz,  $t_W$  = 500ns

AC Test Circuit

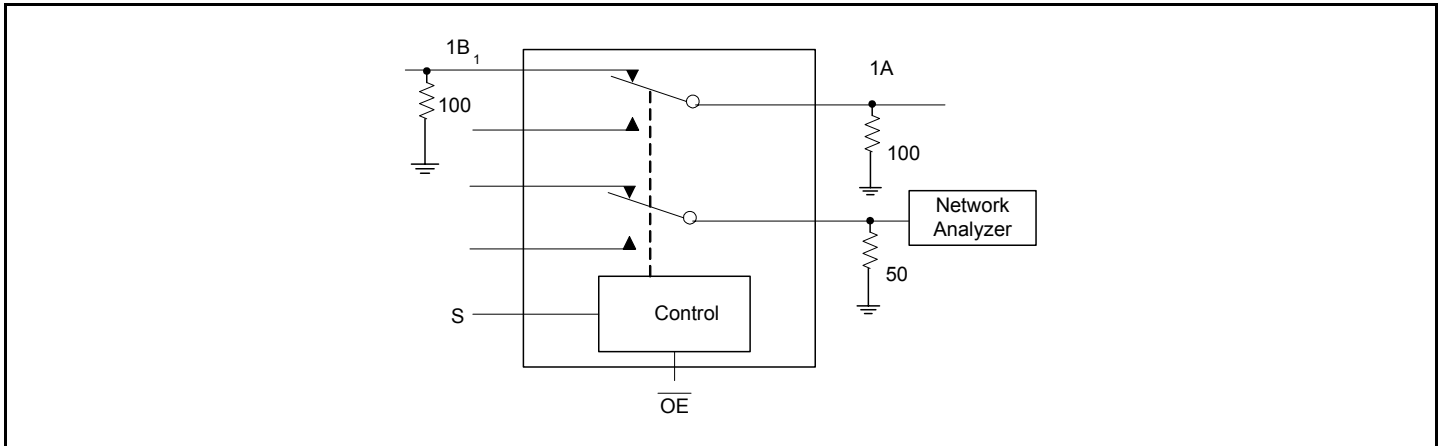


AC Waveforms

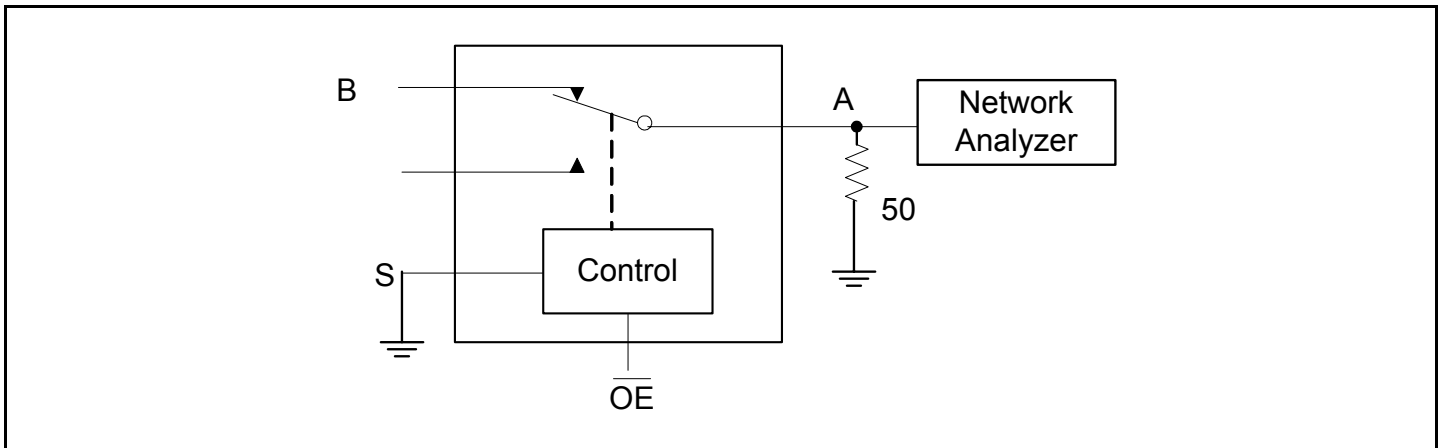


OFF Isolation Test

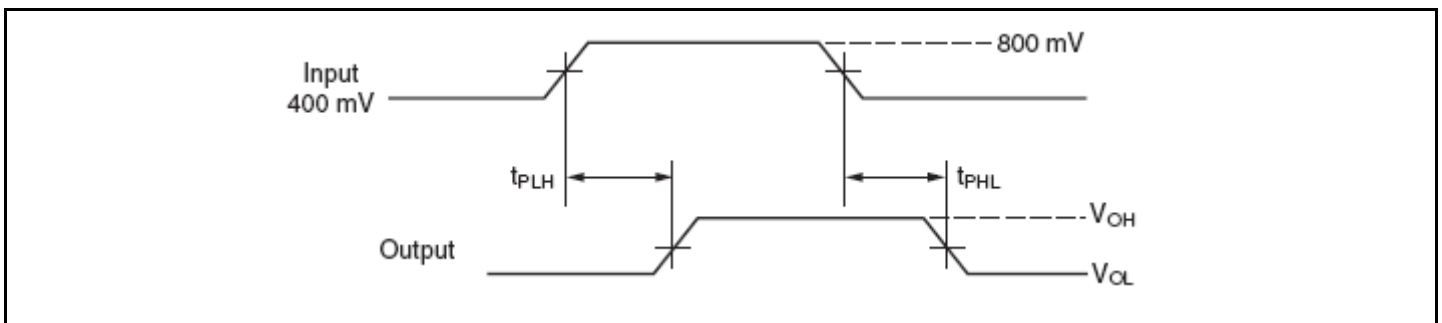




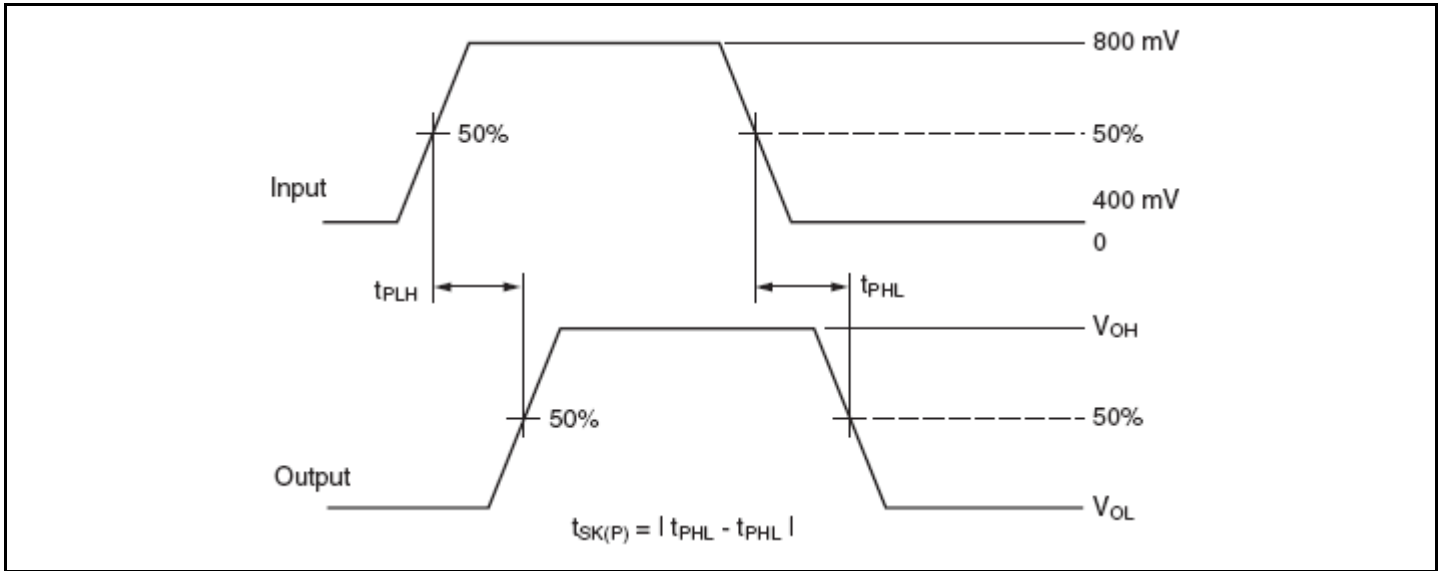
Crosstalk Test



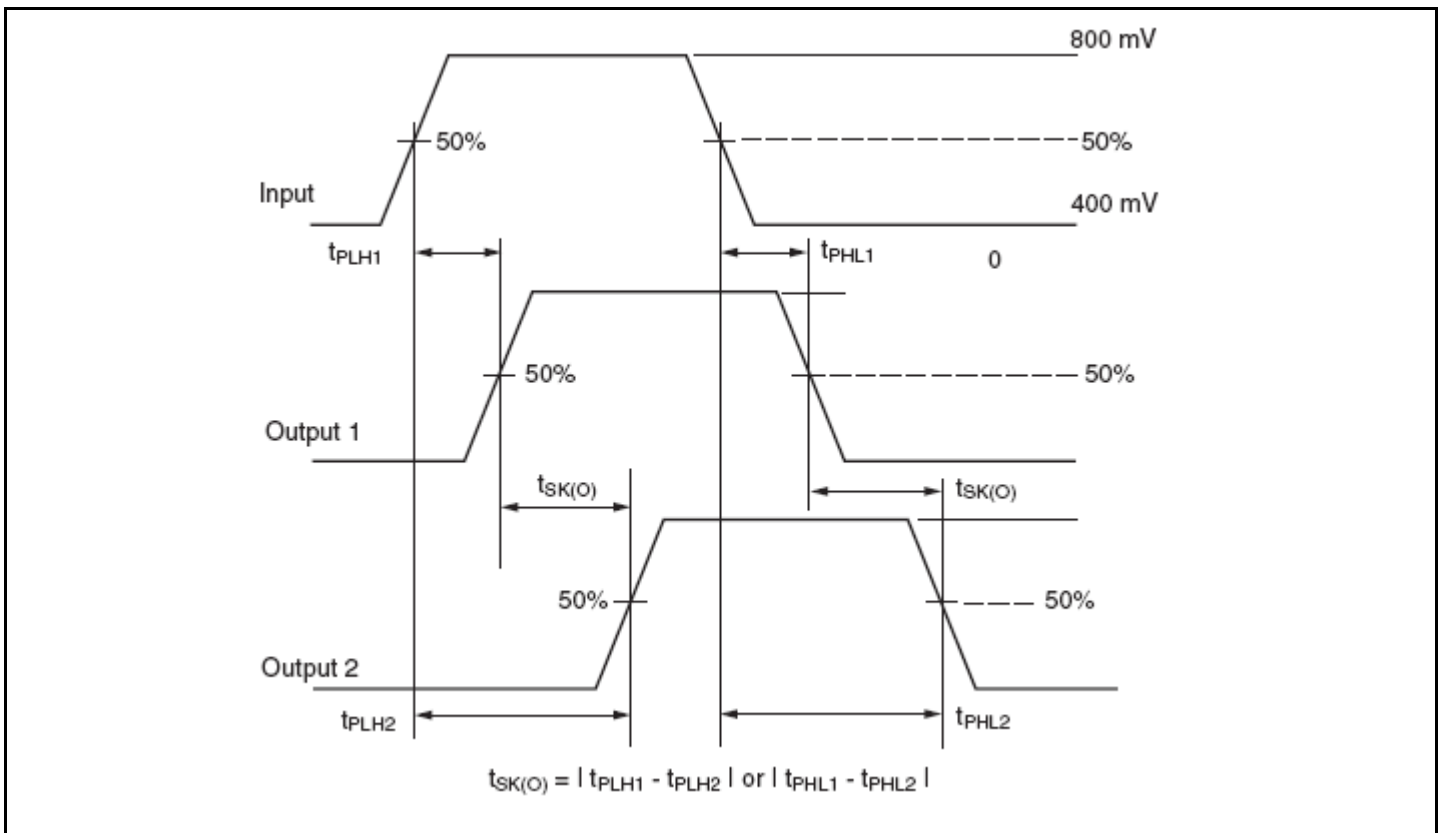
Bandwidth Test



Propagation Delay

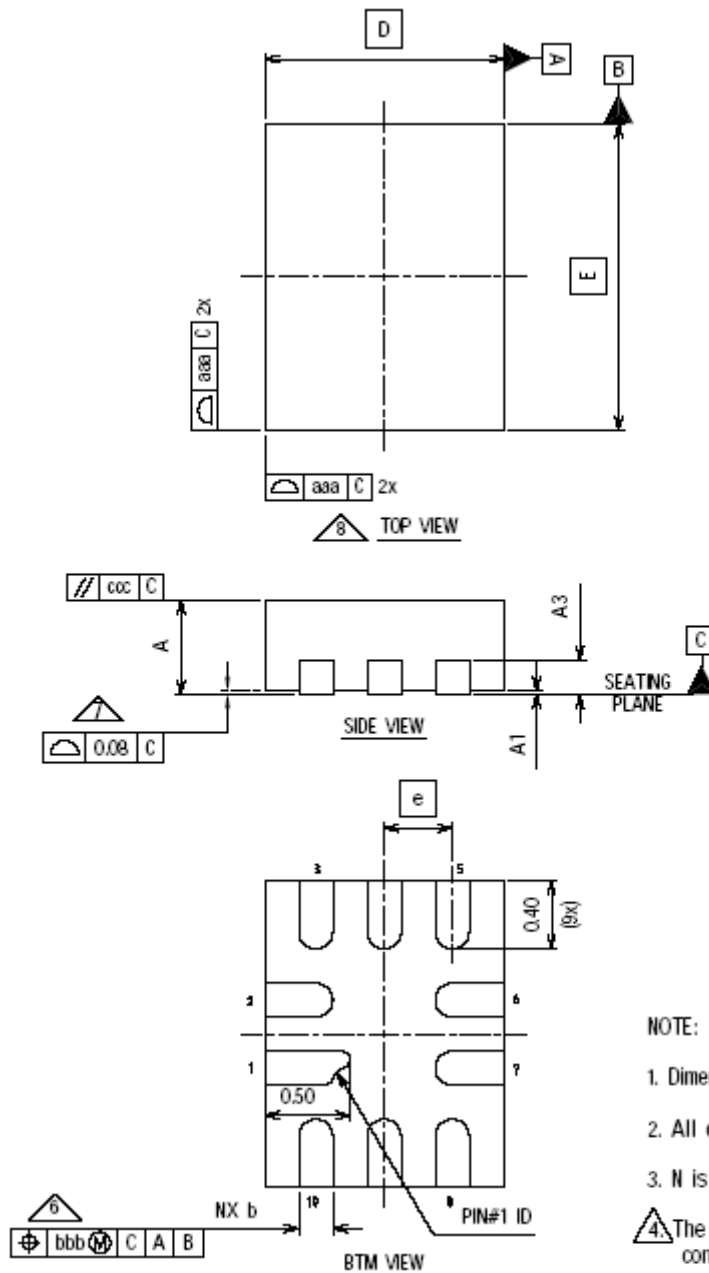


Pulse Skew  $t_{SK(P)}$



Output Skew  $t_{SK(O)}$

### Package Outline and Package Dimensions (10-pin $\mu$ MLP)



SYMBOL	Millimeters			Notes
	MIN	NOM	MAX	
A	0.51	0.55	0.60	1, 2
A1	0.00	0.02	0.05	1, 2
A3		0.15 ref		1, 2
b	0.15	0.20	0.25	
c	0.09		0.20	
D	1.40 BASIC			
E	1.80 BASIC			
E1	6.00		6.20	
N	10			3
ND	3			5
NE	2			5
e	0.40			
aaa	0.15			
bbb	0.10			
ccc	0.10			

**NOTE:**

1. Dimensioning and tolerancing conform to ASME Y14.5M-1994.
2. All dimensions are in millimeters, angles are in degrees( $^{\circ}$ ).
3. N is the total number of terminals.
4. The location of the terminal #1 identifier and terminal numbering convention conforms to JEDEC publication 95 SPP-002.
5. ND and NE refer to the number of terminals on each D and E side respectively.
6. Dimension b applies to metallized terminal and is measured between 0.15mm and 0.30mm from the terminal tip. If the terminal has the optional radius on the other end of the terminal, the dimension b should not be measured in that radius area.
7. Coplanarity applies to the terminals and all other bottom surface metallization.
8. Drawing shown are for illustration only.

## Ordering Information

Part / Order Number	Marking	Shipping Packaging	Package	Temperature
US8030NDGI	TBD	Tubes	10-pin $\mu$ MLP	-40 to +85° C
US8030NDGI8		Tape and Reel	10-pin $\mu$ MLP	-40 to +85° C

**Parts that are ordered with a “G” after the two-letter package code are the Pb-Free configuration and are RoHS compliant.**

While the information presented herein has been checked for both accuracy and reliability, Integrated Device Technology (IDT) assumes no responsibility for either its use or for the infringement of any patents or other rights of third parties, which would result from its use. No other circuits, patents, or licenses are implied. This product is intended for use in normal commercial applications. Any other applications such as those requiring extended temperature range, high reliability, or other extraordinary environmental requirements are not recommended without additional processing by IDT. IDT reserves the right to change any circuitry or specifications without notice. IDT does not authorize or warrant any IDT product for use in life support devices or critical medical instruments.

**IDTUS8030**

**LOW POWER DUAL SPDT HI-SPEED USB 2.0 (480MBPS) SWITCH**

**USB SWITCH**

## IMPORTANT NOTICE AND DISCLAIMER

RENESAS ELECTRONICS CORPORATION AND ITS SUBSIDIARIES (“RENESAS”) PROVIDES TECHNICAL SPECIFICATIONS AND RELIABILITY DATA (INCLUDING DATASHEETS), DESIGN RESOURCES (INCLUDING REFERENCE DESIGNS), APPLICATION OR OTHER DESIGN ADVICE, WEB TOOLS, SAFETY INFORMATION, AND OTHER RESOURCES “AS IS” AND WITH ALL FAULTS, AND DISCLAIMS ALL WARRANTIES, EXPRESS OR IMPLIED, INCLUDING, WITHOUT LIMITATION, ANY IMPLIED WARRANTIES OF MERCHANTABILITY, FITNESS FOR A PARTICULAR PURPOSE, OR NON-INFRINGEMENT OF THIRD PARTY INTELLECTUAL PROPERTY RIGHTS.

These resources are intended for developers skilled in the art designing with Renesas products. You are solely responsible for (1) selecting the appropriate products for your application, (2) designing, validating, and testing your application, and (3) ensuring your application meets applicable standards, and any other safety, security, or other requirements. These resources are subject to change without notice. Renesas grants you permission to use these resources only for development of an application that uses Renesas products. Other reproduction or use of these resources is strictly prohibited. No license is granted to any other Renesas intellectual property or to any third party intellectual property. Renesas disclaims responsibility for, and you will fully indemnify Renesas and its representatives against, any claims, damages, costs, losses, or liabilities arising out of your use of these resources. Renesas' products are provided only subject to Renesas' Terms and Conditions of Sale or other applicable terms agreed to in writing. No use of any Renesas resources expands or otherwise alters any applicable warranties or warranty disclaimers for these products.

(Rev.1.0 Mar 2020)

### Corporate Headquarters

TOYOSU FORESIA, 3-2-24 Toyosu,  
Koto-ku, Tokyo 135-0061, Japan  
[www.renesas.com](http://www.renesas.com)

### Contact Information

For further information on a product, technology, the most up-to-date version of a document, or your nearest sales office, please visit:  
[www.renesas.com/contact/](http://www.renesas.com/contact/)

### Trademarks

Renesas and the Renesas logo are trademarks of Renesas Electronics Corporation. All trademarks and registered trademarks are the property of their respective owners.