

7-Unit 120mA Transistor Array

IR2C38/IR2C38N

# IR2C38/IR2C38N

## 7-Unit 120mA Transistor Array

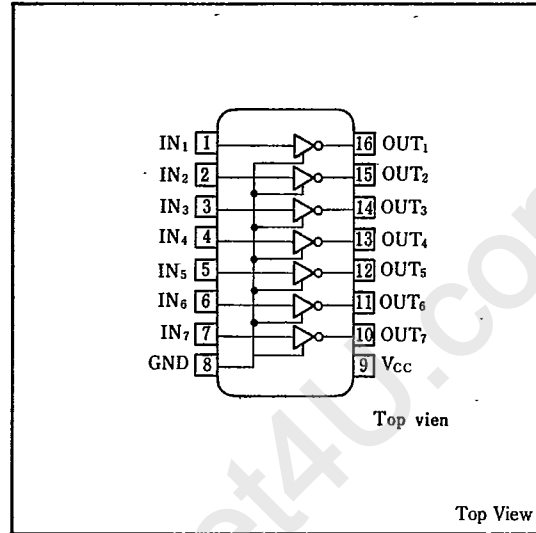
### Description

The IR2C38/IR2C38N is a 7-circuit high sensitive current driver IC which can drive the maximum load of 120mA. It can be driven by a CMOS low power.

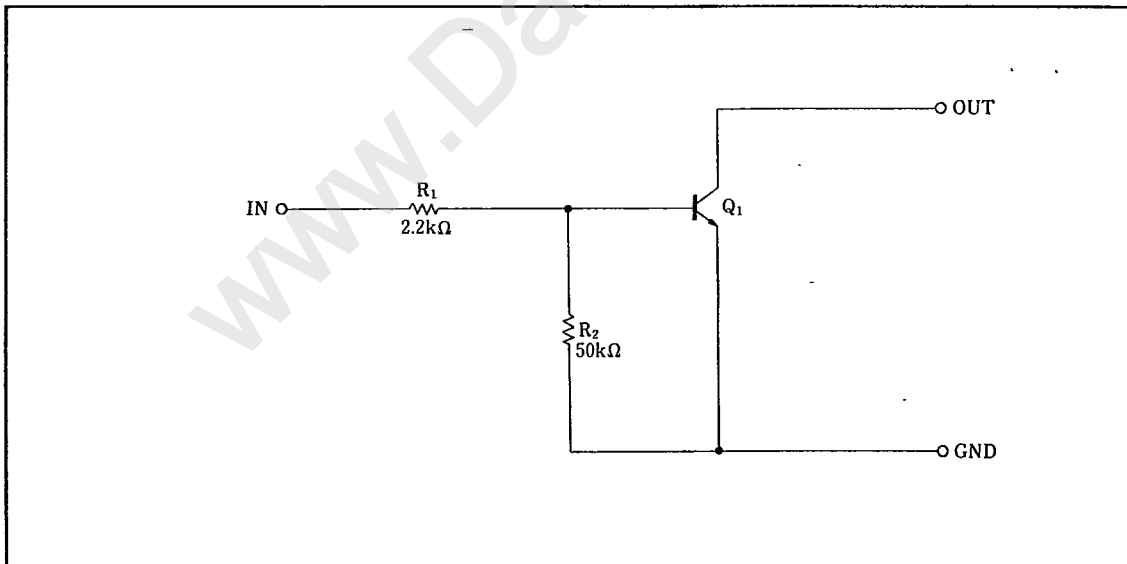
### Features

1. Output breakdown voltage  $BV_{CEO}=15V$  (MAX.)
2. Output current  $I_{OUT}=120mA$  (MAX.)
3. Allows for direct drive with CMOS power output ( $V_{DD}=2.7V$ , output resistance:  $1.25k\Omega$  or less)
4. 16-pin dual-in-line package (IR2C38), 16-pin small outline package (IR2C38N)

### Pin Connections



### Equivalent Circuit



SHARP

## 7-Unit 120mA Transistor Array

IR2C38/IR2C38N

(Ta=25°C)

## Absolute Maximum Ratings

Parameter	Symbol	Condition	Rating	Unit	
Breakdown voltage between collector and emitter	$BV_{CEO}$		15	V	
Output current	$I_{OUT}$		120	mA	
Input voltage	$V_{IN}$		0~10	V	
Power dissipation	$P_D$	$T_a \leq 25^\circ\text{C}$	IR2C38	910	mW
			IR2C38N	405	
$P_D$ derating ratio	$\Delta P_D/^\circ\text{C}$	$T_a > 25^\circ\text{C}$	IR2C38	9.2	mW/°C
			IR2C38N	4.1	
Operating temperature	$T_{opr}$		-20~+85	°C	
Storage temperature	$T_{stg}$		-55~+150	°C	



## Electrical Characteristics

(Ta=-20°C~+85°C)

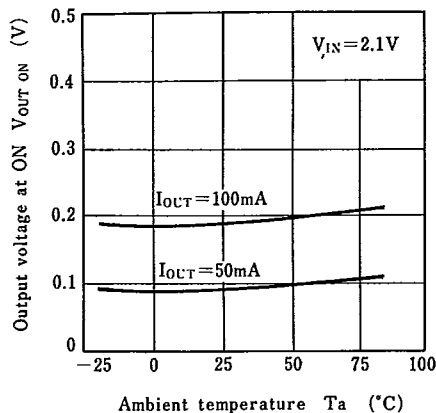
Parameter	Symbol	Condition	MIN.	TYP.	MAX.	Unit
Output current at OFF	$I_{OUT\ OFF}$	$V_{OUT}=15\text{V}, V_{IN}=0.2\text{V}$			10	$\mu\text{A}$
Output voltage at ON	$V_{OUT\ ON}$	$V_{IN}=2.1\text{V}, I_{OUT}=100\text{mA}$		0.3	0.5	V
Input "High" voltage	$V_{IH}$	$I_{OUT}=100\text{mA}, V_{OUT\ ON}=0.5\text{V}$	2.1*			V
Input current	$I_{IN}$	$V_{IN}=3.0\text{V}$	630	900	1700	$\mu\text{A}$

\*The IR2C38 can be switched ON by a CMOS output circuit with  $V_{DD}=2.7\text{V}$  and output resistance being  $1.25\text{k}\Omega$  or less. The output is switched ON by applying  $V_{IN}=2.1\text{V}$ , or  $I_{IN}=0.45\text{mA}$  or more to the input pin.

## Electrical Characteristic Curves

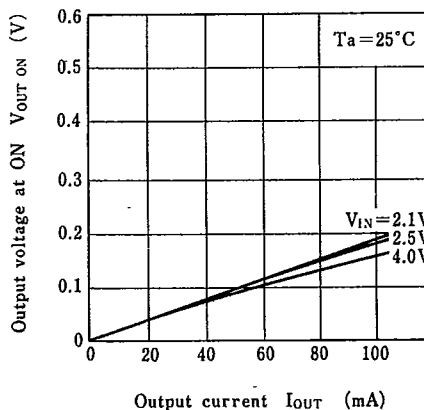
## Output voltage at ON

## - Ambient temperature Characteristics



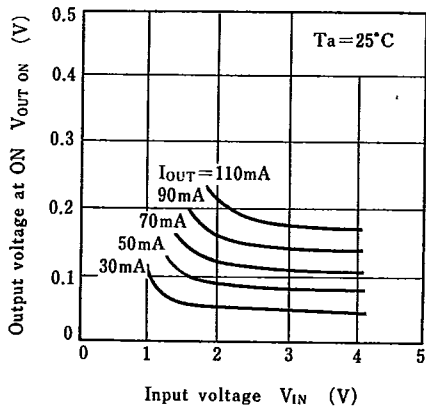
## Output voltage at ON

## - Output current Characteristics



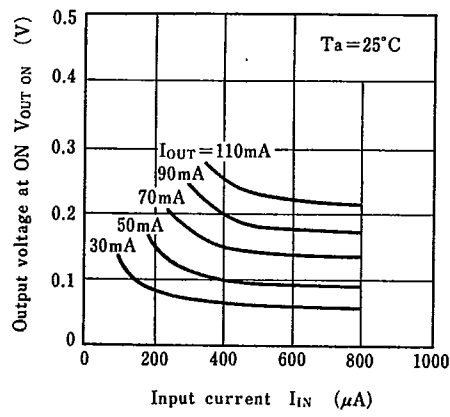
Output voltage at ON

— Input voltage Characteristics



Output voltage at ON

— Input current Characteristics



Input current

— Input voltage Characteristics

