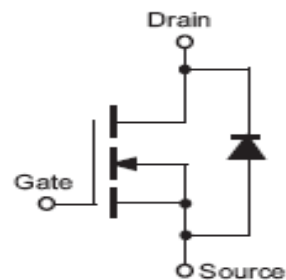


IRF840

N CHANNEL ENHANCEMENT MODE POWER MOS TRANSISTORS

FEATURE

N channel in a plastic TO220 package.
They are intended for use in off-line switched mode power supplies, T.V. and computer monitor power supplies.
DC-DC converters, motor control circuits and general purpose switching applications
Compliance to RoHS.



ABSOLUTE MAXIMUM RATINGS

| Symbol | Ratings | Value | Unit |
|--------------|---|-------------|------------------|
| V_{DS} | Drain-Source Voltage | 500 | V |
| I_{DS} | Continuous Drain Current $T_C= 37^\circ\text{C}$ | 8 | A |
| I_{DM} | Pulsed Drain Current $T_C= 25^\circ\text{C}$ | 32 | |
| I_{AR} | Avalanche Current, Limited by T_{imax} | 8 | |
| E_{AS} | Avalanche Energy, Single pulse | 510 | mJ |
| E_{AR} | Avalanche Energy, Periodic Limited by T_{imax} | 13 | |
| V_{GS} | Gate-Source Voltage | 20 | V |
| $R_{DS(on)}$ | Drain-Source on Resistance | 0.85 | Ω |
| P_T | Power Dissipation at Case Temperature $T_C= 25^\circ\text{C}$ | 125 | W |
| t_J | Operating Temperature | 150 | $^\circ\text{C}$ |
| t_{stg} | Storage Temperature range | -55 to +150 | |

THERMAL CHARACTERISTICS

| Symbol | Ratings | Value | Unit |
|------------|--------------------------------------|-------|---------------------------|
| R_{thJC} | Thermal Resistance, junction-case | 1 | $^\circ\text{C}/\text{W}$ |
| R_{thJA} | Thermal Resistance, junction-ambient | 62.5 | |

IRF840

ELECTRICAL CHARACTERISTICS

TC=25°C unless otherwise noted

| Symbol | Ratings | Test Condition(s) | Min | Typ | Max | Unit |
|--------------|---------------------------------|---|-----|-----|------|----------|
| V_{DSS} | Drain-Source Breakdown Voltage | $I_D = 250 \mu A, V_{GS} = 0 V$ | 500 | - | - | V |
| $V_{GS(th)}$ | Gate-threshold Voltage | $I_D = 250 \mu A, V_{GS} = V_{DS}$ | 2 | 3 | 4 | V |
| I_{DSS} | Zero Gate Voltage Drain Current | $V_{DS} = 500 V, V_{GS} = 0 V$ $T_j = 25^\circ C$ | - | - | 25 | μA |
| | | $V_{DS} = 500 V, V_{GS} = 0 V$ $T_j = 125^\circ C$ | - | - | 250 | |
| I_{GSS} | Gate-Source leakage Current | $V_{GS} = 20 V, V_{DS} = 0 V$ | - | - | 500 | nA |
| $R_{DS(on)}$ | Drain-Source on Resistance | $I_D = 4 A, V_{GS} = 10 V$ | - | - | 0.85 | Ω |

DYNAMIC CHARACTERISTICS

| Symbol | Ratings | Test Condition(s) | Min | Typ | Max | Unit |
|--------------|------------------------------|---|-----|-----|------|---------|
| g_{fs} | Transconductance | $V_{DS} > I_{D(on)} * R_{DS(on)max}$ $I_D = 4.4 A$ | 4.9 | - | - | S |
| C_{ISS} | Input Capacitance | $V_{GS} = 0 V, V_{DS} = 25 V$ $f = 1 MHz$ | - | - | 1600 | μF |
| C_{OSS} | Output Capacitance | | - | - | 350 | |
| C_{RSS} | Reverse transfer Capacitance | | - | - | 150 | |
| $t_{d(on)}$ | Turn-on Delay Time | $V_{DD} = 200 V,$ $I_D = 4 A, R_{GS} = 4.7 \Omega$ | - | - | 35 | ns |
| t_r | Rise time | | - | - | 15 | |
| $t_{d(off)}$ | Turn-off Delay Time | | - | - | 90 | |
| t_f | Fall Time | | - | - | 30 | |

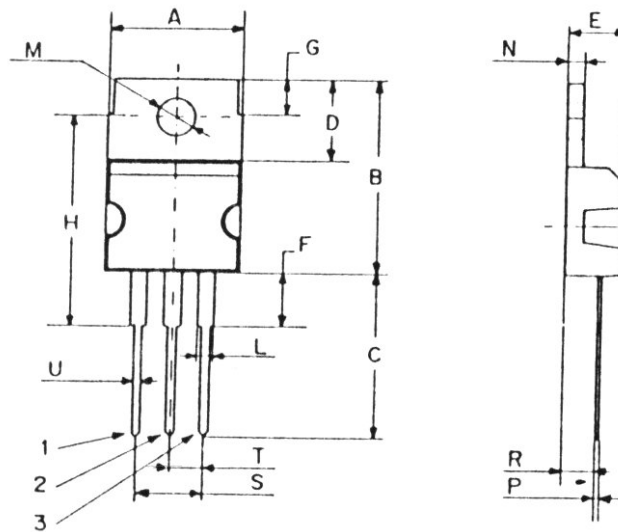
REVERSE DIODE

| Symbol | Ratings | Test Condition(s) | Min | Typ | Max | Unit |
|----------|---|---------------------------|-----|-----|-----|---------|
| I_S | Inverse Diode Continuous Forward Current. | $T_C = 25^\circ C$ | - | - | 8 | A |
| I_{SM} | Inverse diode direct current, pulsed. | $T_C = 25^\circ C$ | - | - | 32 | |
| V_{SD} | Inverse Diode Forward voltage | $V_{GS} = 0 V, I_F = 8 A$ | - | - | 2 | V |
| T_{rr} | Reverse Recovery Time | $I_F = 8 A$ | - | 460 | 970 | ns |
| Q_{rr} | Reverse Recovery Charge | $di/dt = 100 A/\mu s$ | - | 4.2 | 8.9 | μC |

IRF840

MECHANICAL DATA CASE TO-220

| DIMENSIONS (mm) | | |
|-----------------|-------|-------|
| | Min. | Max. |
| A | 9,90 | 10,30 |
| B | 15,65 | 15,90 |
| C | 13,20 | 13,40 |
| D | 6,45 | 6,65 |
| E | 4,30 | 4,50 |
| F | 2,70 | 3,15 |
| G | 2,60 | 3,00 |
| H | 15,75 | 17,15 |
| L | 1,15 | 1,40 |
| M | 3,50 | 3,70 |
| N | - | 1,37 |
| P | 0,46 | 0,55 |
| R | 2,50 | 2,70 |
| S | 4,98 | 5,08 |
| T | 2,49 | 2,54 |
| U | 0,70 | 0,90 |



| | |
|---------|--------|
| Pin 1 : | Gate |
| Pin 2 : | Drain |
| Pin 3 : | Source |

Revised August 2012

Information furnished is believed to be accurate and reliable. However, Comset Semiconductors assumes no responsibility for the consequences of use of such information nor for any infringement of patents or other rights of third parties which may result from its use. Data are subject to change without notice. Comset Semiconductors makes no warranty, representation or guarantee regarding the suitability of its products for any particular purpose, nor does Comset Semiconductors assume any liability arising out of the application or use of any product and specifically disclaims any and all liability, including without limitation consequential or incidental damages. Comset Semiconductors' products are not authorized for use as critical components in life support devices or systems.