

Engineering Specification

**Type 18.1 SXGA Monochrome TFT/LCD Module
Model Name:ITSX88E4**

Document Control Number : OEM I-88E4-01

Note:Specification is subject to change without notice. Consequently it is better to contact to International Display Technology before proceeding with the design of your product incorporating this module.

**Sales Support
International Display Technology**

i Contents

- i Contents
- ii Record of Revision
- 1.0 Handling Precautions**
- 2.0 General Description**
 - 2.1 Characteristics
 - 2.2 Functional Block Diagram
- 3.0 Absolute Maximum Ratings**
- 4.0 Optical Characteristics**
- 5.0 Signal Interface**
 - 5.1 Connectors
 - 5.2 Interface Signal Connector
 - 5.3 Interface Signal Description
 - 5.4 Interface Signal Electrical Characteristics
 - 5.5 Backlight Connector Signal Description
 - 5.6 Backlight Input Signal Electrical Characteristics
- 6.0 Pixel format image**
- 7.0 Interface Timings**
 - 7.1 Timing Characteristics
 - 7.2 Timing Definition
- 8.0 Power Consumption**
- 9.0 Power ON/OFF Sequence**
- 10.0 Mechanical Characteristics**
- 11.0 National Test Lab Requirement**

ii Record of Revision

Date	Document Revision	Page	Summary
July 4,2002	OEM I-88E4-01	All	First Edition for customer.

1.0 Handling Precautions

- Damage to the panel or the panel electronics may result from any deviation from the recommended power on/off sequencing. The panel should not be hot plugged. Refer to the Power On/Off Sequence section in this Specification.
- Handle the panel with care. The LCD panel and CCFL (Cold Cathode Fluorescent Lamp)s are made of glass and may crack or break if dropped or subjected to excessive force.
- The CCFLs contain a small amount of Mercury so should not be disposed of to landfill. Dispose of as required by local ordinances or regulations.
- The LCD module contains small amounts of material having no flammability grade. The exemption conditions of the flammability requirements (4.7.3.4, IEC60950 3rd.Ed. or UL60950 3rd.Ed.) should be applied.
- The panel may be damaged by the application of twisting or bending forces to the module assembly. Care should be taken in the design of the monitor housing and the assembly procedure to prevent stress damage to the panel especially the lamp cable and the lamp connector..
- Use standard earthing/grounding procedures to prevent damage to the CMOS LSI while handling the module.
- Use earthing/grounding procedures, an ionic shower, or similar to prevent static damage while removing the protective front sheet.
- The front polarizer can be easily damaged. Take care not to scratch the front surface with any hard or abrasive material. Dust, finger marks, grease etc. can be removed with a soft damp cloth (a small amount of mild detergent can be used on the damp cloth). Do not apply water or detergent directly to the front surface as this may cause staining or damage the electronic components.
- Never use any solvent on the front polarizer or module as this may cause permanent damage.
- Do not open or modify the module assembly.
- Continuous operation of the panel with the same screen content may result in some image sticking. Over 10 hours operation with the same content is not recommended.
- Wipe off water drop immediately. Long contact with water may cause discoloration or spots.
- When the panel surface is soiled, wipe it with absorbent cotton or other soft cloth.
- Please do not use middle 3(three) screw holes on the upper(long) side and middle 3(three) screw holes on the lower(long) side for panel fixing. These screw holes are for manufacturing purpose only.

- The information contained herein is presented only as a guide for the applications of our products. No responsibility is assumed by International Display Technology for any infringements of patents or other right of the third parties which may result from its use. No license is granted by implication or otherwise under any patent or patent rights of International Display Technology or others.
- The information contained herein may be changed without prior notice. It is therefore advisable to contact International Display Technology before proceeding with the design of equipment incorporating this product.

2.0 General Description

This specification applies to the Type 18.1 Monochrome TFT/LCD Module 'ITSX88E4'.

This module is designed for a LCD monitor style display unit. This module includes inverter card.

The screen format and electrical interface are intended to support the VESA SXGA (1280(H) x 1024(V) at 60Hz) screen.

Supported gray scale is 8-bit per 1(one) sub-pixel.

All input signals are LVDS(Low Voltage Differential Signaling) interface compatible.

2.1 Characteristics

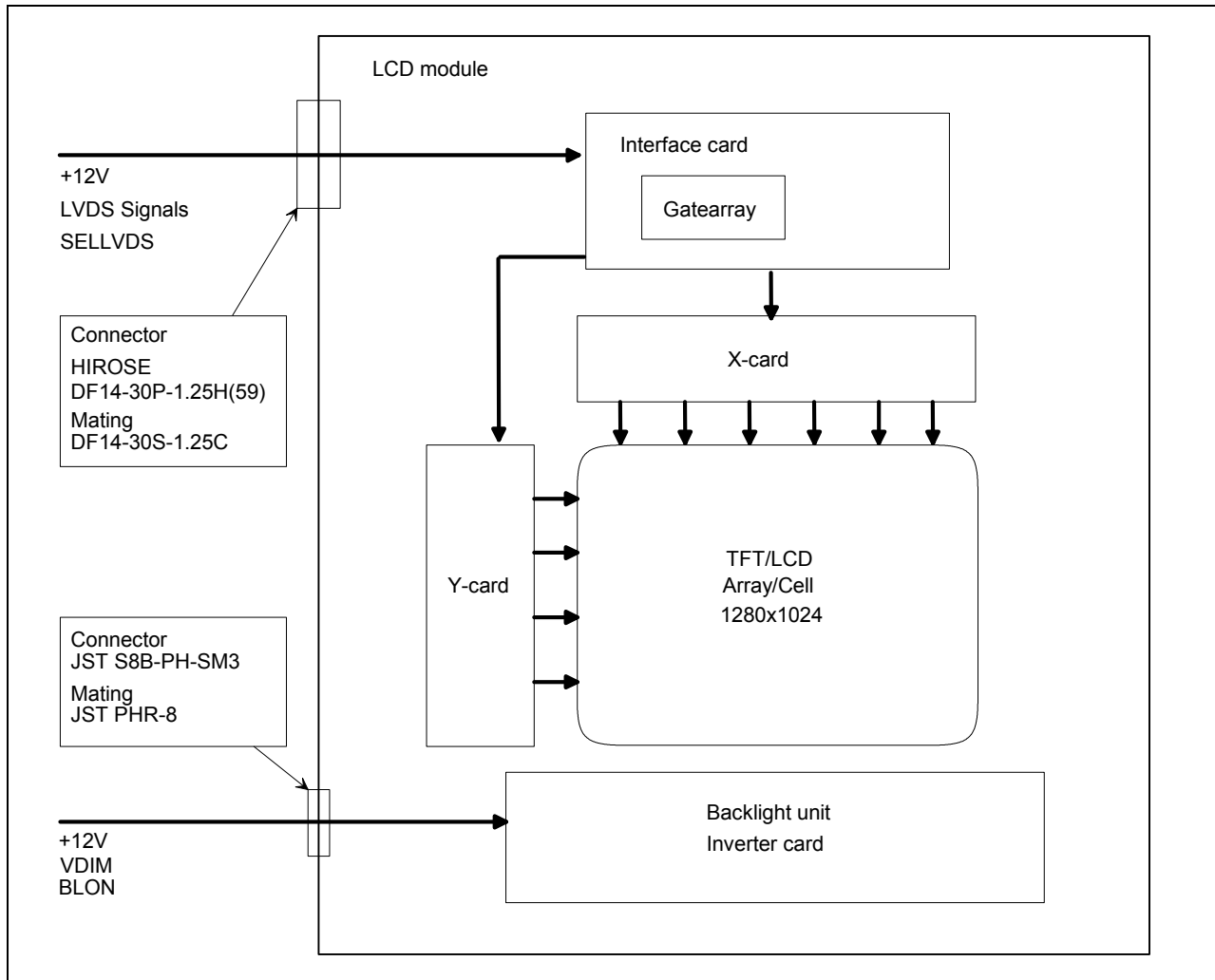
The following items are characteristics summary on the table under 25 degree C condition:

CHARACTERISTICS ITEMS	SPECIFICATIONS
Screen Diagonal [mm]	460
Pixels H x V	1280(x3) x 1024
Active Area [mm]	359.0(H) x 287.2(V)
Pixel Pitch [mm]	0.2805(per one triad) x 0.2805
Pixel Arrangement	Sub-pixel Vertical Stripe
Weight [grams]	2,900 typ.
Physical Size [mm]	389.0(W) typ. x 317.2(H) typ. x 35.0 (D) max.
Display Mode	Normally Black
Supported Grayscale	8-bit per 1(one) sub-pixel
White Luminance [cd/m ²]	700 Typ.
Contrast Ratio	550 : 1 Typ.
Optical Rise Time/Fall Time [msec]	Rise Time + Fall Time : 40 Typ (total)
Input Voltage [V]	+12 +/- 5%
Power Consumption [W]	38.8 typ., 46.6 max.
Electrical Interface	LVDS Dual (Even/Odd A/B/C Data(8bit), 3sync signals, Clock)
Temperature Range [degree C]	
Operating	0 to +50
Storage (Shipping)	-20 to +60

Note : Luminance : Rise / Fall Time:Respective 10% -> 90%, 90%->10%

2.2 Functional Block Diagram

The following diagram shows the functional block of this Type 18.1 Monochrome TFT/LCD Module.



3.0 Absolute Maximum Ratings

Absolute maximum ratings of the module is as follows :

Item	Symbol	Min	Max	Unit	Conditions
Logic/LCD Drive Voltage	Vin	-0.3	+13.2	V	
Backlight Voltage	VBL	-0.3	+13.2	V	
Select LVDS data order	SELLVDS	-0.3	3.3	V	
Brightness control	VDIM	-0.3	5.3	V	
Backlight on signal	BLON	-0.3	+5.3	V	
Operating Temperature	TOP	0	+50	deg.C	(Note 1)
Operating Humidity	HOP	8	80	%RH	(Note 1)
Storage Temperature	TST	-20	+60	deg.C	(Note 1)
Storage Humidity	HST	5	95	%RH	(Note 1)
Vibration			1.5 10-200	G Hz	(Note 2)
Shock			50 11	G ms	(Note 2) Half sine wave

Note :

1. Maximum Wet-Bulb should be 39 degree C and No condensation.
 2. Vibration Specification
 - Sign Vibration:10-200-10Hz, 1.5G, 30 min, X, Y, Z Axis, Each One Time.
- Shock Specification
- Half sine wave:50G 11msec. -X+/-, -Y+/-, -Z+/- (Total 6 directions), Each one time Shock.

4.0 Optical Characteristics

The optical characteristics are measured under stable conditions as follows under 25 degree C condition:

Item	Conditions	Specification	
		Typ.	Note
Viewing Angle (Degrees)	Horizontal (Right)	85	-
	K \geq 15 (Left)	85	-
K:Contrast Ratio	Vertical (Upper)	85	-
	K \geq 15 (Lower)	85	-
	Horizontal (Right)	-	85 Min.
	K \geq 10 (Left)	-	85 Min.
	Vertical (Upper)	-	85 Min.
	K \geq 10 (Lower)	-	85 Min.
Contrast ratio		550	-
Response Time (ms)	Rising(10%→90%) + Falling(90%→10%)	40	-
White Balance	White x	0.280	-
	White y	0.304	-
Maximum White Luminance (cd/m ²)	VDIM=0V	700	-

Note : Measure center of the screen.

5.0 Signal Interface

5.1 Connectors

Physical interface is described as for the connector on module.

These connectors are capable of accommodating the following signals and will be following components.

Connector Name / Designation	Signal Connector
Manufacturer	HIROSE
Type / Part Number	DF14-30P-1.25H(59)
Mating Type / Part Number	DF14-30S-1.25C
Contact / Part Number	DF14-2628SCFA

Connector Name / Designation	For Backlight Connector on Inverter card
Manufacturer	JST
Type / Part Number	S8B-PH-SM3
Mating Type / Part Number	PHR-8

5.2 Interface Signal Connector

Pin #	Signal Name	Pin #	Signal Name
30	Vin(+12V)	29	Vin(+12V)
28	Vin(+12V)	27	VinRTN(GND)
26	VinRTN(GND)	25	VinRTN(GND)
24	SELLVDS	23	(RESERVED)
22	DGND	21	RxOIN3+
20	RxOIN3-	19	RxOCLKIN+
18	RxOCLKIN-	17	RxOIN2+
16	RxOIN2-	15	RxOIN1+
14	RxOIN1-	13	RxOIN0+
12	RxOIN0-	11	RxEIN3+
10	RxEIN3-	9	RxECLKIN+
8	RxECLKIN-	7	RxEIN2+
6	RxEIN2-	5	RxEIN1+
4	RxEIN1-	3	RxEIN0+
2	RxEIN0-	1	LVDSGND

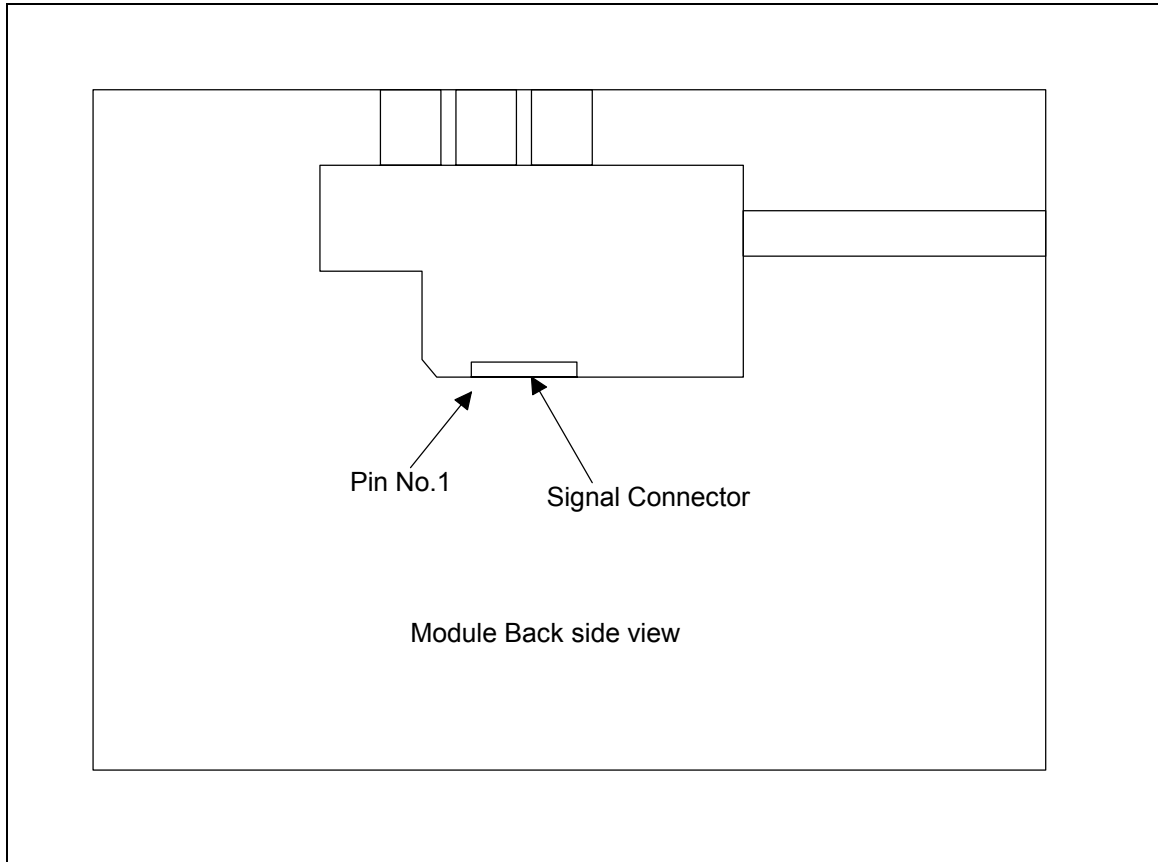
5.3 Interface Signal Description

The module uses a pair of LVDS receiver SN75LVDS82(Texas Instruments) or compatible. LVDS is a differential signal technology for LCD interface and high speed data transfer device. Transmitter shall be SN75LVDS83(negative edge sampling) or compatible.

The first LVDS port (RxExxx) transmits even pixels while the second LVDS port (RxOxxx) transmits odd pixels.

Please refer to the chart below for pin #1 of Signal Connector.

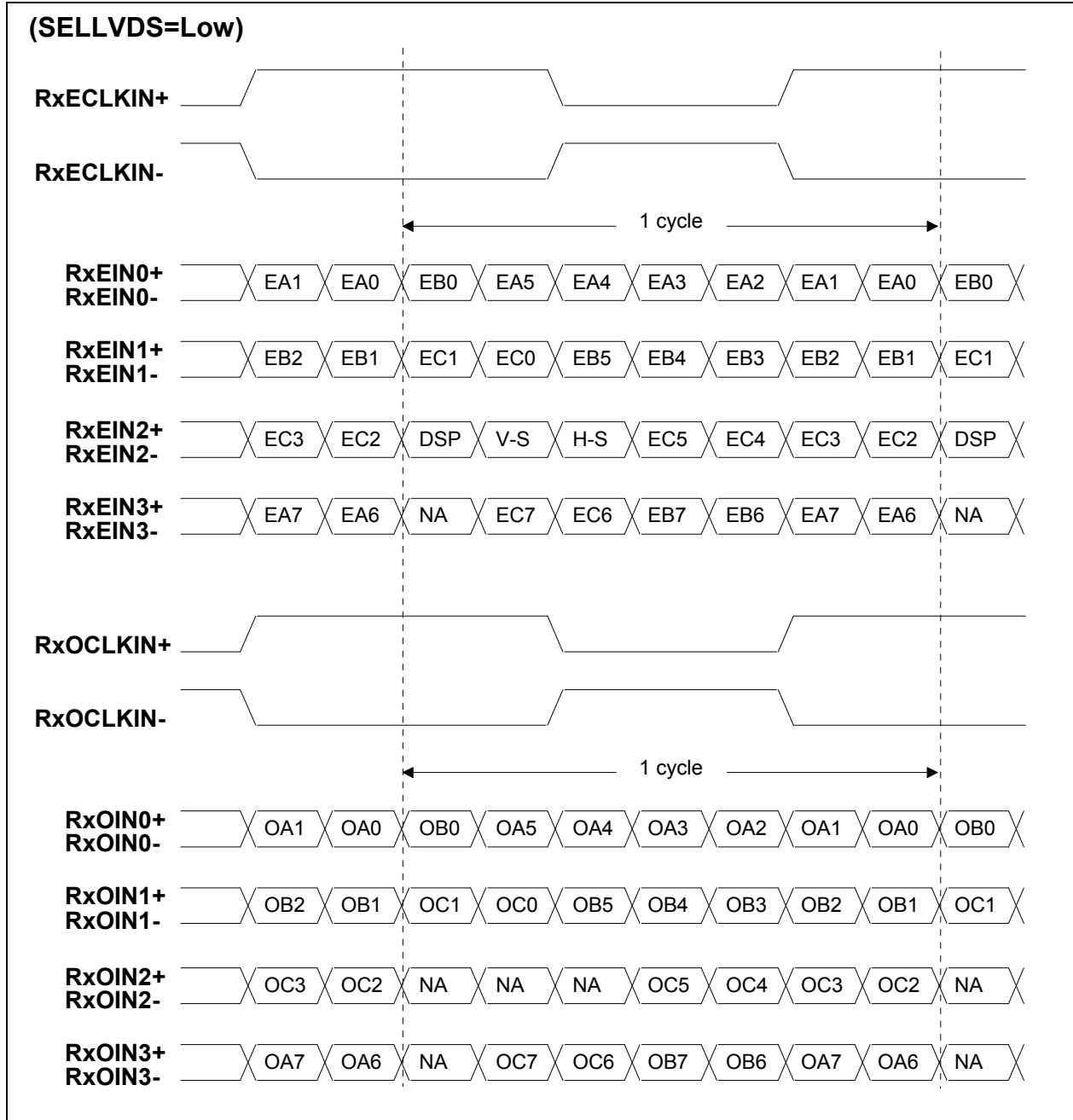
LCD Drive Connector No.1 Pin location



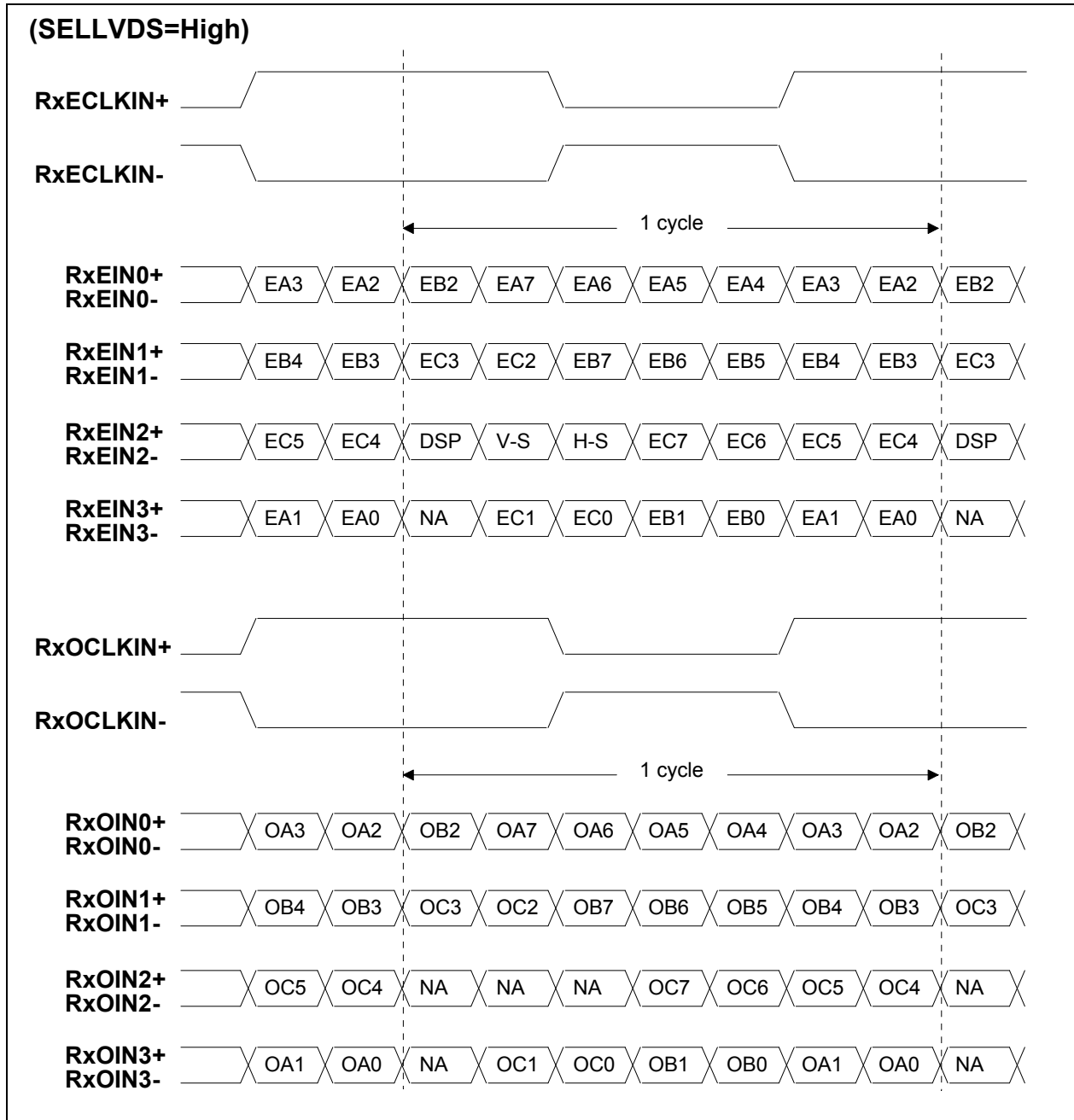
PIN #	SIGNAL NAME	Description
30	Vin	+12.0V Power Supply
29	Vin	+12.0V Power Supply
28	Vin	+12.0V Power Supply
27	VinRTN	Ground for Vin line
26	VinRTN	Ground for Vin line
25	VinRTN	Ground for Vin line
24	SELLVDS	Select LVDS data order. See the following figure.
23	(RESERVED)	This pin should be left open.
22	DGND	Signal Ground
21	RxOIN3+	Positive LVDS differential data input (Odd data)
20	RxOIN3-	Negative LVDS differential data input (Odd data)
19	RxOCLKIN+	Positive LVDS differential clock input (Odd Clock)
18	RxOCLKIN-	Negative LVDS differential clock input (Odd Clock)
17	RxOIN2+	Positive LVDS differential data input (Odd data)
16	RxOIN2-	Negative LVDS differential data input (Odd data)
15	RxOIN1+	Positive LVDS differential data input (Odd data)
14	RxOIN1-	Negative LVDS differential data input (Odd data)
13	RxOIN0+	Positive LVDS differential data input (Odd data)
12	RxOIN0-	Negative LVDS differential data input (Odd data)
11	RxEIN3+	Positive LVDS differential data input (Even data)
10	RxEIN3-	Negative LVDS differential data input (Even data)
9	RxECLKIN+	Positive LVDS differential clock input (Even Clock)
8	RxECLKIN-	Negative LVDS differential clock input (Even Clock)
7	RxEIN2+	Positive LVDS differential data input (Even data,H-Sync,V-Sync,DSPTMG)
6	RxEIN2-	Negative LVDS differential data input (Even data,H-Sync,V-Sync,DSPTMG)
5	RxEIN1+	Positive LVDS differential data input (Even data)
4	RxEIN1-	Negative LVDS differential data input (Even data)
3	RxEIN0+	Positive LVDS differential data input (Even data)
2	RxEIN0-	Negative LVDS differential data input (Even data)
1	DGND	Signal Ground

Note: Input signals of odd and even clock shall be the same timing.

The interface card has a 100ohm resistor between positive and negative lines of each LVDS signal input on the internal circuit.



Note:A/B/C data 7:MSB, A/B/C data 0:LSB



Note:A/B/C data 7:MSB, A/B/C data 0:LSB

The following is LVDS Signal description.

LVDS DATA NAME	Description
DSP	Display Timing When the signal is high, the pixel data shall be valid to be displayed.
V-S	Vertical Sync Both Positive and negative polarity are acceptable.
H-S	Horizontal Sync Both Positive and negative polarity are acceptable.

TI LVDS X'mitter (SN75LVDS83) Signal name	ITSX88E4 LVDS Signal (SELLVDS=Low)	ITSX88E4 LVDS Signal (SELLVDS=High)
D0	A0	A2
D1	A1	A3
D2	A2	A4
D3	A3	A5
D4	A4	A6
D5	A7	A1
D6	A5	A7
D7	B0	B2
D8	B1	B3
D9	B2	B4
D10	B6	B0
D11	B7	B1
D12	B3	B5
D13	B4	B6
D14	B5	B7
D15	C0	C2
D16	C6	C0
D17	C7	C1
D18	C1	C3
D19	C2	C4
D20	C3	C5
D21	C4	C6
D22	C5	C7
D23	NA	NA
D24	H Sync	H Sync
D25	V Sync	V Sync
D26	Disp Timing	Disp Timing
D27	A6	A0

Note:

SELLVDS: Pin#7 of Signal connector

A0: LSB, A7: MSB

5.4 Interface Signal Electrical Characteristics

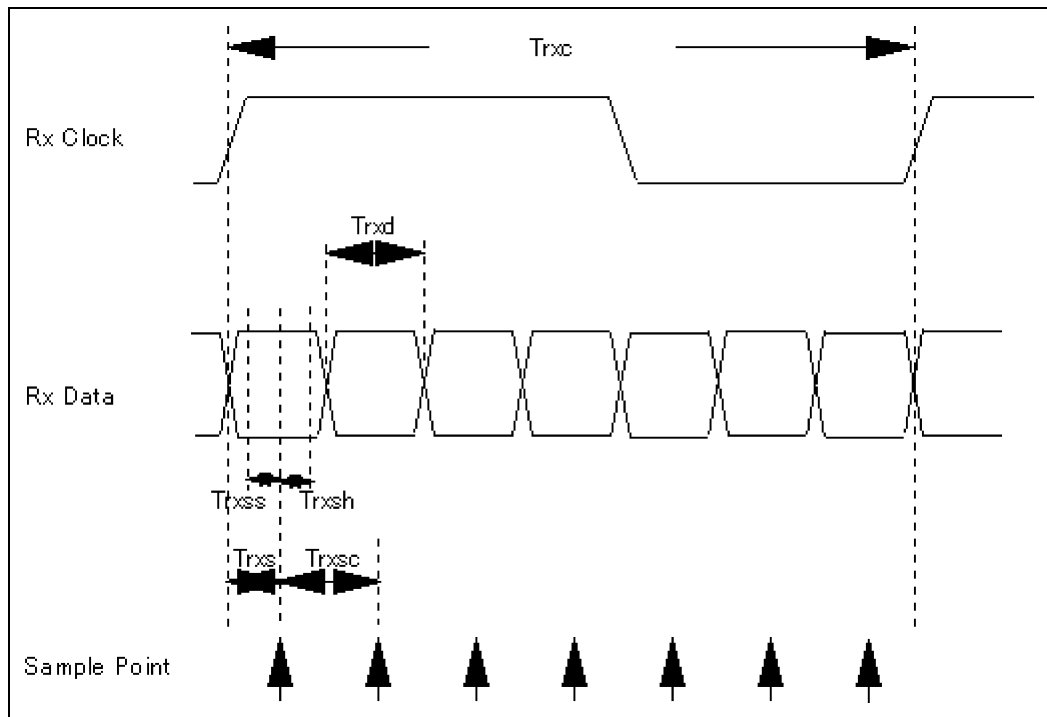
Input signals shall be low or Hi-Z state when V_{in} is off.

It is recommended to refer the specifications of SN75LVDS82DGG(Texas Instruments) in detail.

Signal electrical characteristics are as follows;

Parameter	Condition	Min	Max	unit
V_{th}	Differential Input High Voltage ($V_{cm}=+1.2V$)		100	mV
V_{tl}	Differential Input High Voltage ($V_{cm}=+1.2V$)	-100		mV

LVDS Timing



LVDS Macro AC characteristics.

Parameter	Symbol	Min	Typ	Max	Unit
LVDS Clock Cycle	Trxc	17.6	18.5	20	[ns]
LVDS Data Cycle	Trxd		Trxc/7		[ns]
Sample Data Setup Time (Trxc=Typ.)	Trxss	600			[ps]
Sample Data Hold Time (Trxc=Typ.)	Trxsh	600			[ps]
Data Sample Time	Trxs		Trxc/14		[ns]
Data Sample Cycle	Trxsc		Trxc/7		[ns]

Name	Description	Min	Typ	Max	Unit	Note
SELLVDS	High voltage	2	3	3.3	V	
	Low voltage	-0.1	0	0.7	V	
	Current	-1	-	1	mA	

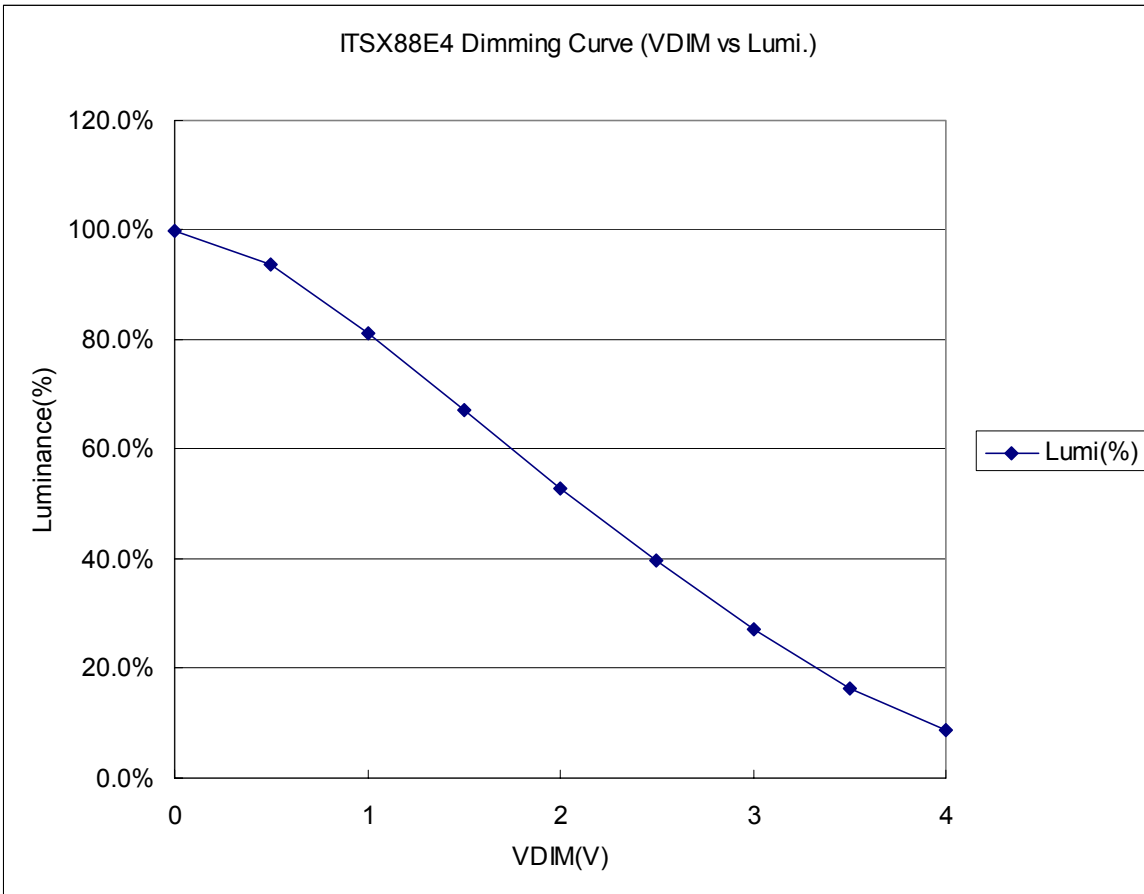
5.5 Backlight Connector Signal Description

PIN #	SIGNAL NAME	Description
1	VBL	+12.0V Power Supply for backlight
2	VBL	+12.0V Power Supply for backlight
3	VBL	+12.0V Power Supply for backliht
4	RTN	Ground for VBL line, VDIM and BLON
5	RTN	Ground for VBL line, VDIM and BLON
6	RTN	Ground for VBL line, VDIM and BLON
7	VDIM	Brightness control voltage input(0-4V), (0V:brightness MAX, 4V:brightness MIN)
8	BLON	backliht on/off signal(Hi:backlight ON, Low:backlight OFF) TTL level

5.6 Backlight Input Signal Electrical Characteristics

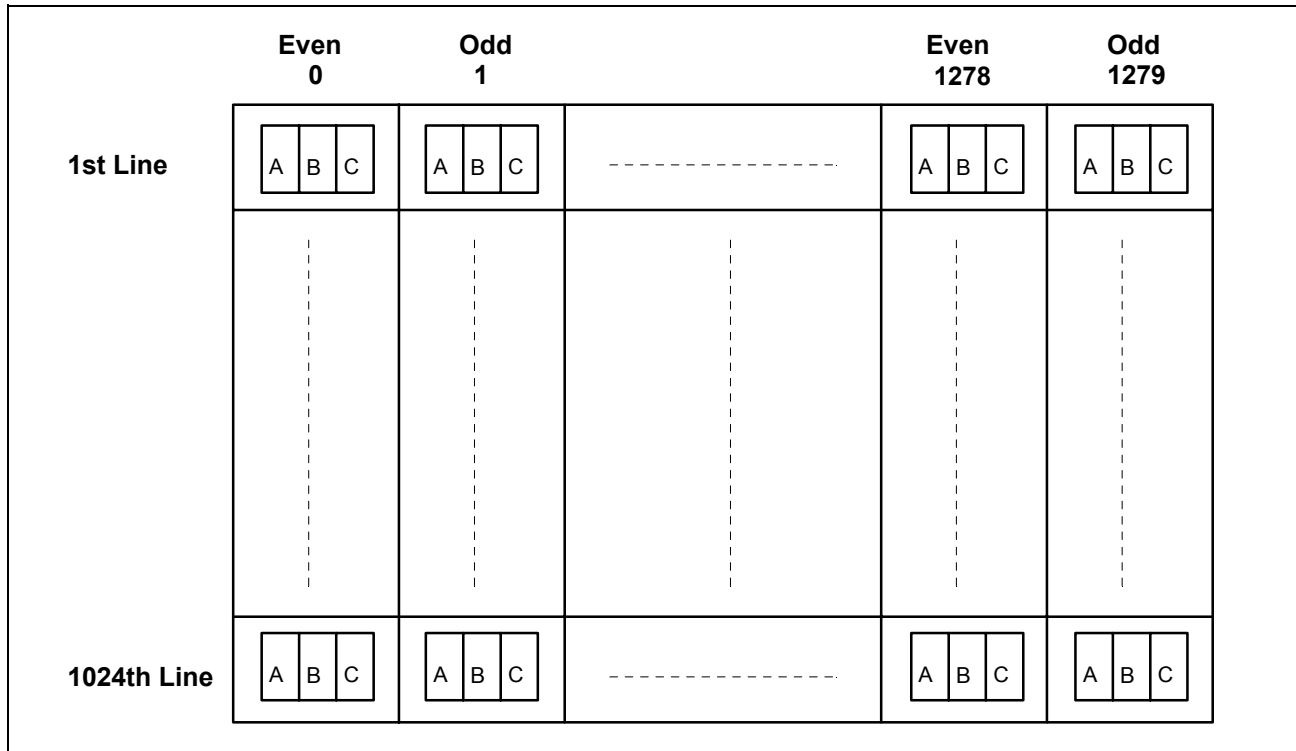
Name	Description	Min	Typ	Max	Unit	Note
BLON	High voltage	2.0	5.0	5.25	V	
	Low voltage	-0.1	0	0.8	V	
	Current	-1.0	-	1.0	mA	
VDIM	Input Voltage Range	0	-	4.0	V	0V: Brightness Max. 4V: Brightness Min.
	Current	-1.0	-	1.0	mA	

The following chart is the Dimming Signal (VDIM) versus Luminance curve for your reference.



6.0 Pixel format image

Following figure shows the relationship of the input signals and LCD pixel format image. Odd and even pair of ABC data are sampled at a time.



7.0 Interface Timings

Basically, interface timings described here is not actual input timing of LCD module but output timing of SN75LVDS82DGG(Texas Instruments) or equivalent.

7.1 Timing Characteristics

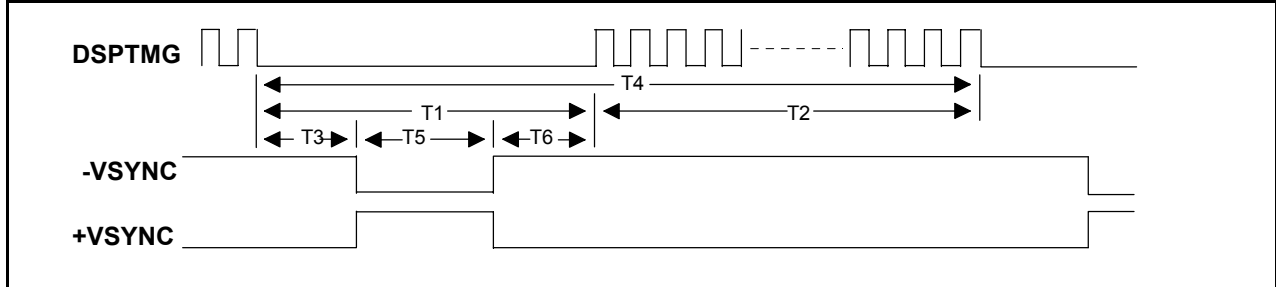
Signal	Item	Symbol	MIN.	TYP.	MAX.	Unit
DTCLK	Freq.	Fdck	50	54	56.8	MHz
DTCLK	Cycle	Tck	17.6	18.5	20	ns
+V-Sync	Frame Rate	1/Tv	56.25	60.02	61	Hz
+V-Sync	Cycle	Tv	16.39	16.66	17.78	ms
+V-Sync	Cycle	Tv	1035	1066	2047	lines
+V-Sync	active level	Tva	3	3		lines
+V-Sync	V-back porch	Tvb	7	38	63	lines
+V-Sync	V-front porch	Tvf	1	1		lines
+DSPTMG	V-Line	m	-	1024	-	lines
+H-Sync	Scan Rate	1/Th	-	63.98	-	KHz
+H-Sync	Cycle	Th	844	844	1023	Tck
+H-Sync	active level	Tha(*1)	4	56		Tck
+H-Sync	Back porch	Thb(*1)	4	124		Tck
+H-Sync	Front porch	Thf	4	24		Tck
+DSPTMG	Display Pixels	n	-	640	-	Tck

Note :

- Typical value is refer to VESA STANDARD.
(*1): Tha+Thb should be less than 1024 Tck.
- When there are invalid timing, Display appears black pattern.
Synchronous Signal Defects and enter Auto Refresh for LCD Module Protection Mode.

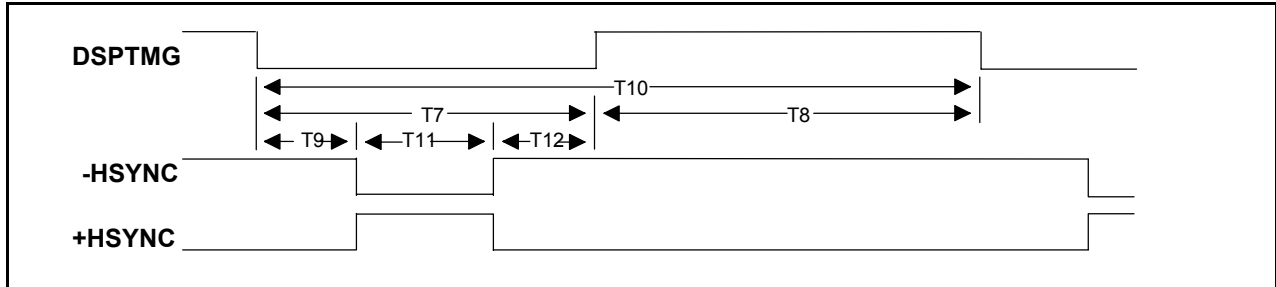
7.2 Timing Definition

Vertical Timing



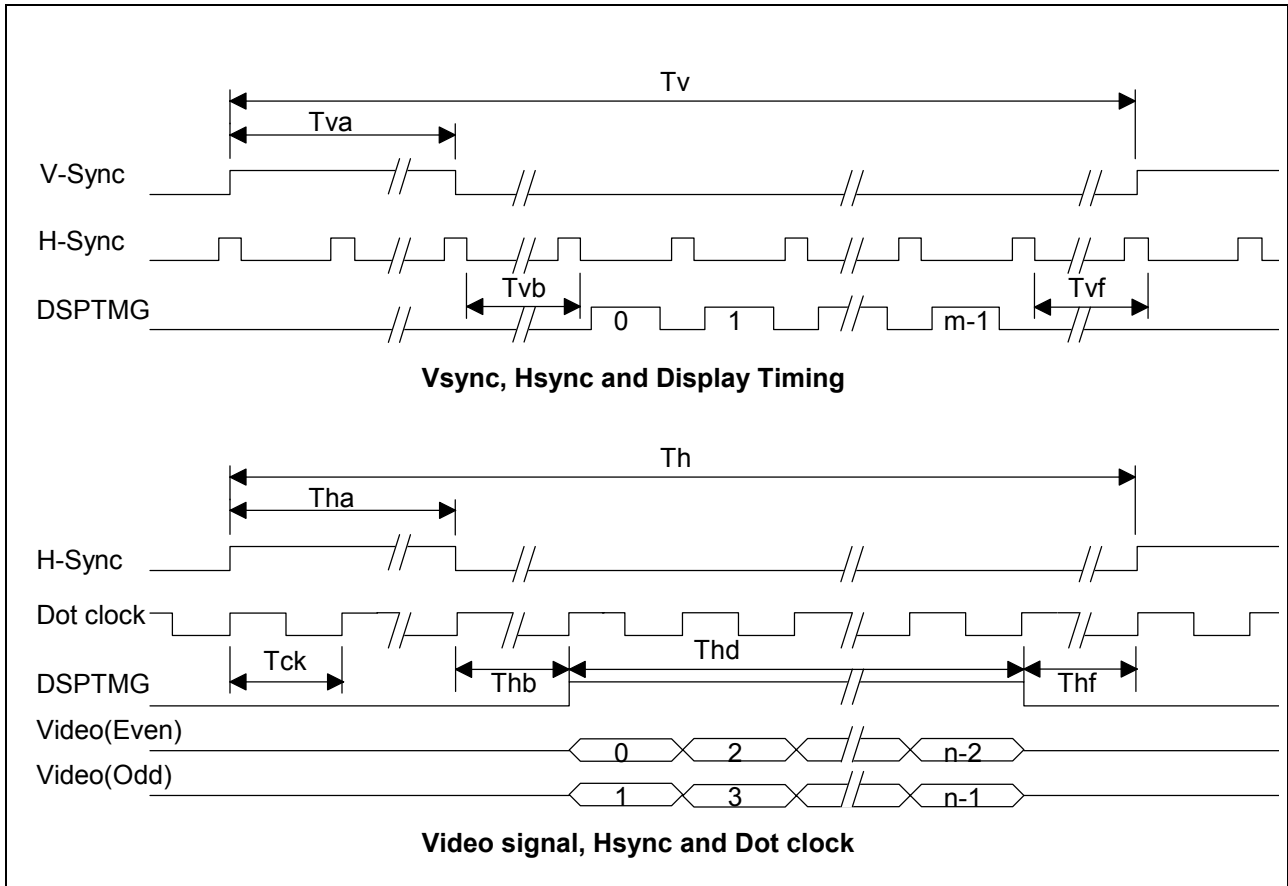
Support mode	T1 Vertical Blanking	T2 Active Field	T3 VSYNC Front Porch	T4 Frame Time	T5 VSYNC Width	T6 VSYNC Back Porch
1280 x 1024 at 60Hz (VESA STANDARD) (H line rate : 15.6 us)	0.656 ms (42 lines)	16.005 ms (1024 lines)	0.016 ms (1 line)	16.661 ms (1066 lines)	0.047 ms (3 lines)	0.594 ms (38 lines)

Horizontal Timing



Support mode	T7 Horizontal Blanking	T8 Active Field	T9 HSYNC Front Porch	T10 H line Time	T11 HSYNC Width	T12 HSYNC Back Porch
1280 x 1024 (VESA STANDARD) (Dotclock : 108.000 MHz)	3.778 us (408 dots)	11.852 us (1280 dots)	0.444 us (48 dots)	15.630 us (1688 dots)	1.037 us (112 dots)	2.296 us (248 dots)

Interface Timing Definition



8.0 Power Consumption

Input power specifications are as follows;

SYMBOL	PARAMETER	Min	Typ	Max	UNITS	CONDITION
Vin	Logic/LCD Drive Voltage	11.4	12	12.6	V	
Iin	Vin Current			550	mA	All White Pattern Vin=11.4V (*1)
Pin(1)	Vin Power		4.5		W	Typical Load Condition (Vertical Gray Bar, 256 Scale)
Pin(2)			5.2	6.3	W	Maximum Load Condition (All White)
	Logic/LCD DC current Waveform	Refer to the Typical Logic/LCD Current Waveform shown in the following Figure. Waveform may vary in particular application. Actual current waveform on user application must be evaluated and make sure the ripple current and/or peak current should be allowable to user power supply.				Maximum Load Condition (All White)
Vin rp	Allowable Logic/LCD Drive Ripple Voltage			500	mVp-p	
VBL	Backlight power voltage	11.4	12	12.6	V	
PBL	Backlight power consumption		33.6	40.3	W	Brightness = max.

Note : A used DC power supply for this LCD module should be have a over current protection function to safety.

(*1) This value indicates long term average.

Typical Logic/LCD Current Waveform

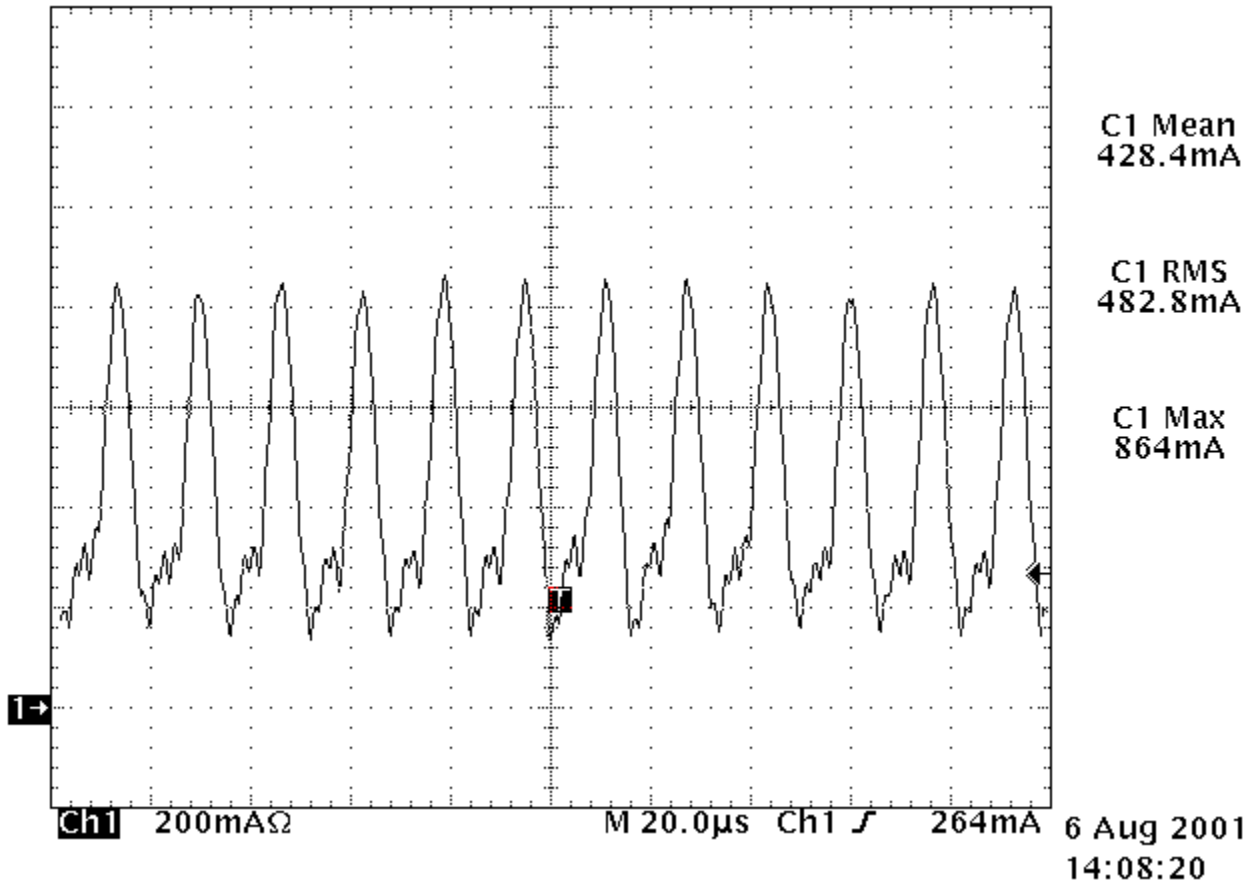
Condition : Maximum Load Condition(All White)

Voltage : 12.0V measured at Interface Connector J1

Interface Cable : AWG28, 30 Conductors, L=500mm from Voltage Source to EUT

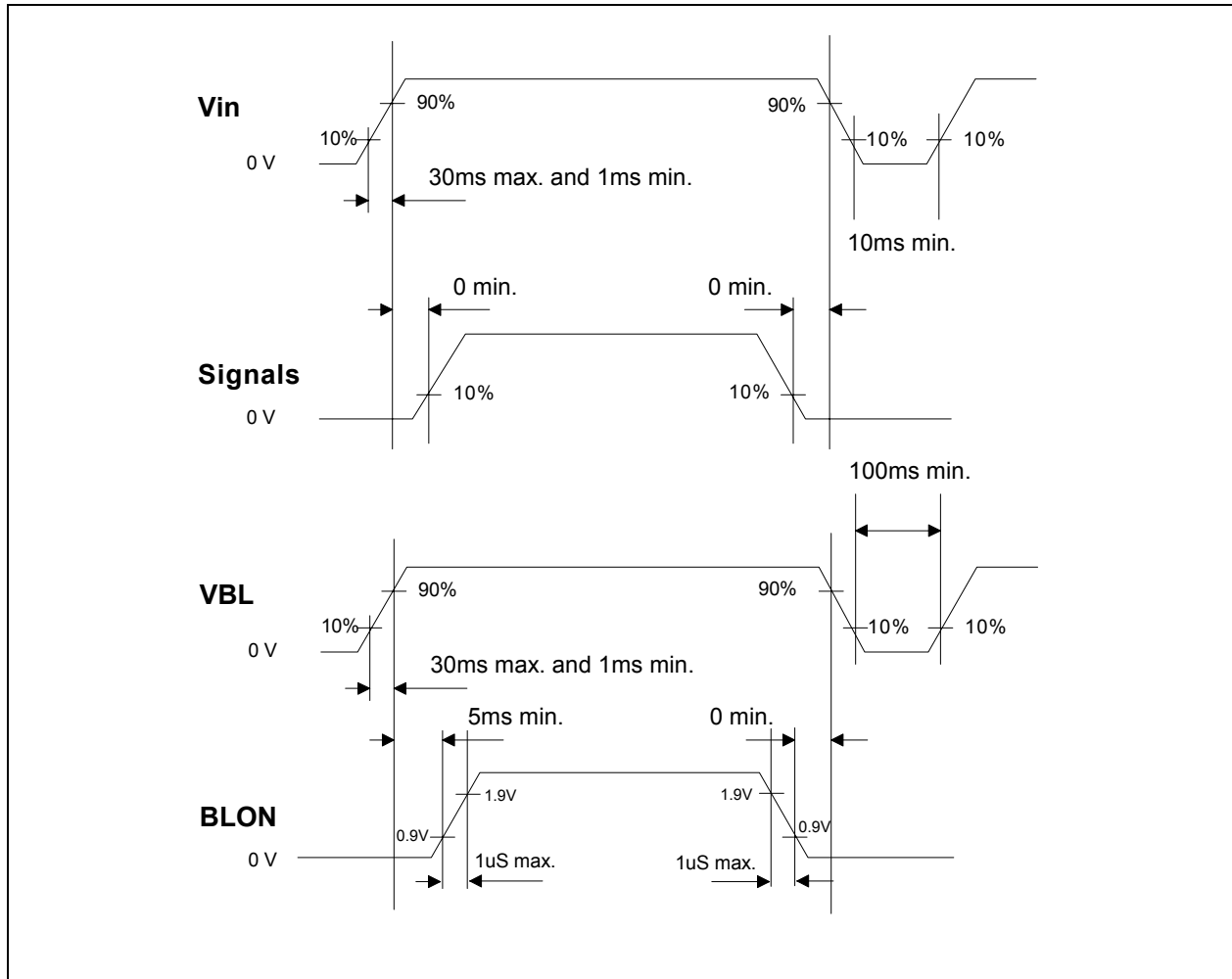
Tek Stop: 2.50MS/s

42 Acqs



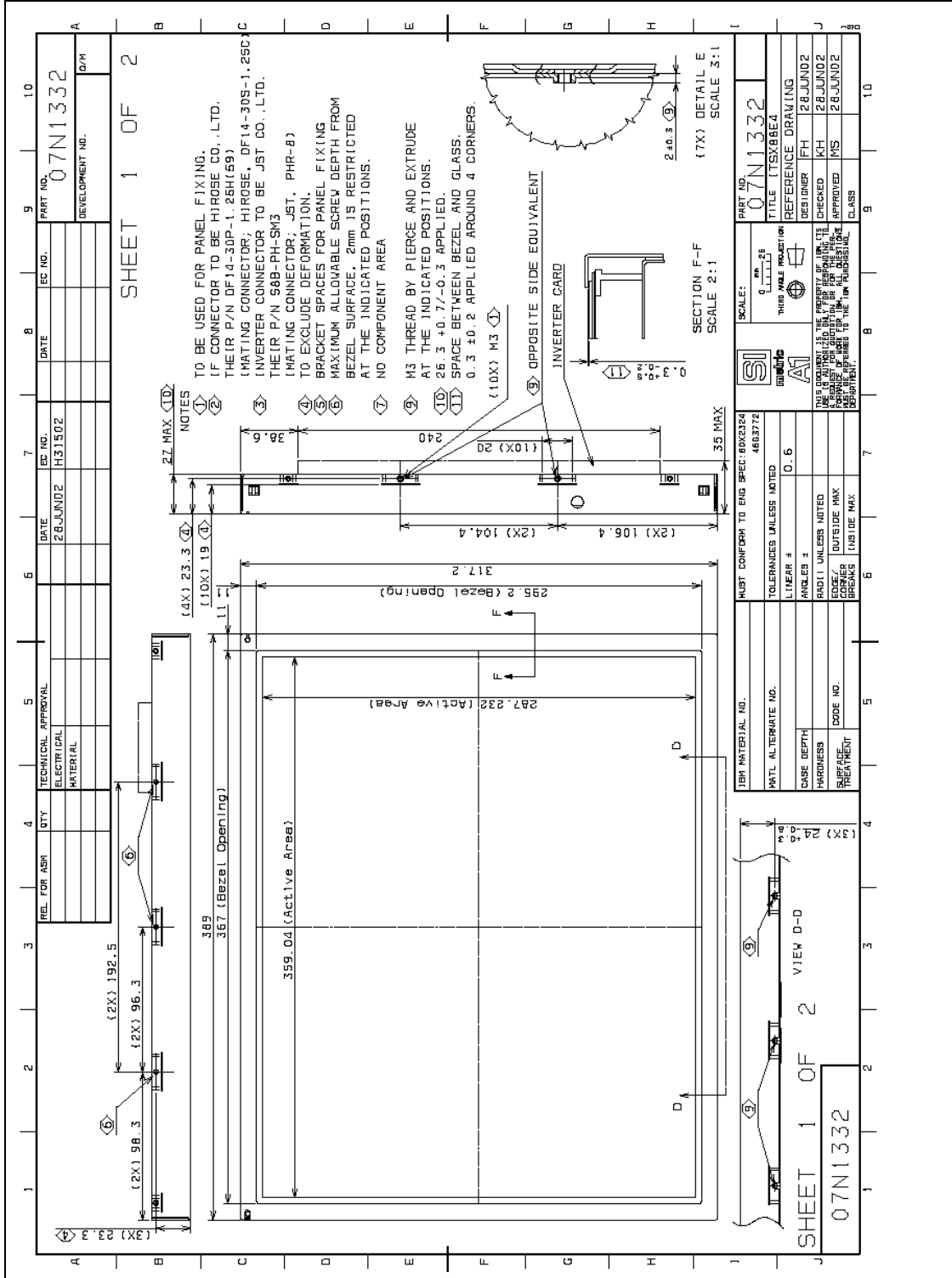
9.0 Power ON/OFF Sequence

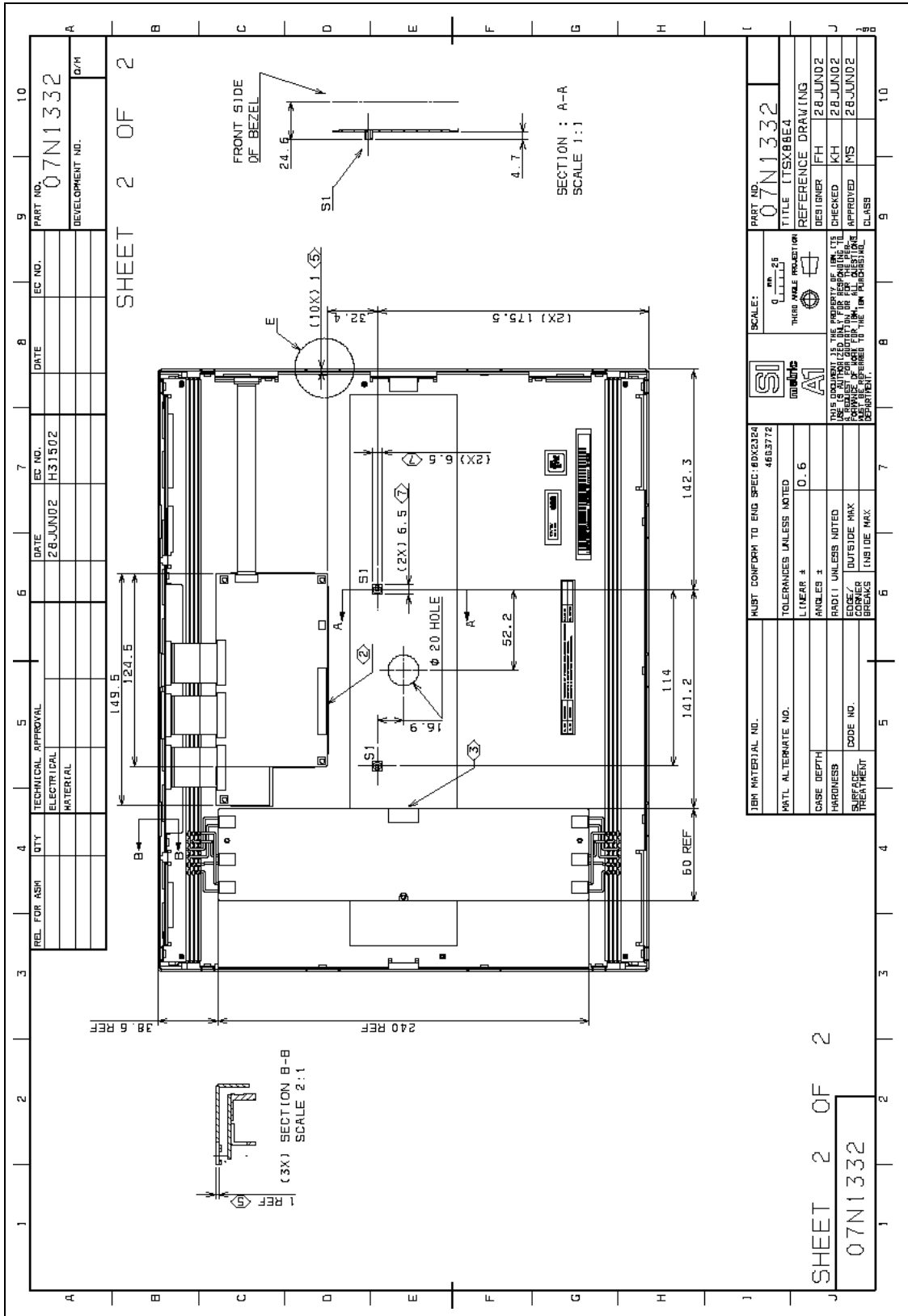
Vin and VBL power and lamp on/off sequence is as follows. Interface signals are also shown in the chart. Signals from any system shall be Hi-Z state or low level when Vin and VBL are off. It is recommended that the BLON should be supplied after other signals are stable in order to avoid visible screen noise when power-on.



10.0 Mechanical Characteristics

Note : Please do not use middle 3(three) screw holes on the upper(long) side and middle 3(three) screw holes on the lower(long) side for panel fixing. These screw holes are for manufacturing purpose only.





REL. FOR ASM	QTY	TECHNICAL APPROVAL	EC NO.	DATE	EC NO.	DATE	EC NO.	DATE	PART NO.	DEVELOPMENT NO.
		ELECTRICAL MATERIAL	H31502	28 JUN 02					07N1332	D/M

SHEET 2 OF 2

SECTION A-A
SCALE 1:1

SECTION B-B
SCALE 2:1

MUST CONFORM TO ENG SPEC: 40X2324 46B372		SCALE: 1:1	PART NO. 07N1332
TOLERANCES UNLESS NOTED		THERMABLE PRESENTATION	TITLE LTSXBBE4
L INEAR 4	0.6	DESIGNER FH	REFERENCE DRAWING 28 JUN 02
ANGLES 2		CHECKED KH	APPROVED MS 28 JUN 02
RADII UNLESS NOTED		CLASS	
CORNER BREAKS	(H)IDE MAX		
SURFACE TREATMENT	(H)IDE MAX		
THIS DOCUMENT IS THE PROPERTY OF IDT. ITS USE IS AUTHORIZED ONLY FOR THE SPECIFIC PART AND FOR THE PROJECT AND FOR WHICH IT WAS APPROVED BY THE IDT R&D DEPARTMENT.			

SHEET 2 OF 2

07N1332

11.0 National Test Lab Requirement

The display module will satisfy all requirements for compliance to
UL60950 3rd. Ed. U.S.A. Information Technology Equipment

***** End Of Page *****