



SAW Components

Data Sheet J 1956 M




SAW Components
J 1956 M
IF Filter for Intercarrier Applications
38,90 MHz
Data Sheet
Standard

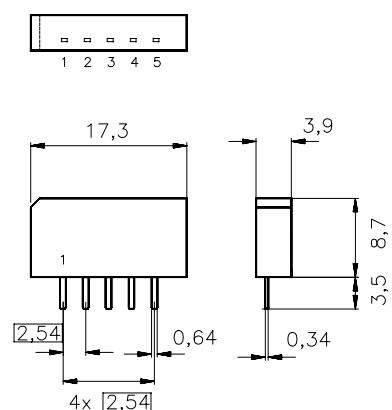
- I

Features

- TV IF filter with Nyquist slope and sound shelf
- Constant group delay
- Suitable for CENELEC EN 55020

Terminals

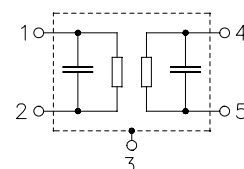
- Tinned CuFe alloy

 Plastic package **SIP5K**


Dimensions in mm, approx. weight 1,0 g

Pin configuration

- | | |
|---|-----------------------|
| 1 | Input |
| 2 | Input - ground |
| 3 | Chip carrier - ground |
| 4 | Output |
| 5 | Output |



Type	Ordering code	Marking and package according to	Packing according to
J 1956 M	B39389-J1956-M100	C61157-A1-A15	F61074-V8067-Z000

Maximum ratings

Operable temperature range	T_A	-25/+65	°C	
Storage temperature range	T_{stg}	-40/+85	°C	
DC voltage	V_{DC}	12	V	between any terminals
AC voltage	V_{pp}	10	V	between any terminals



SAW Components

J 1956 M

IF Filter for Intercarrier Applications

38,90 MHz

Data Sheet

Characteristics

Reference temperature:

$T_A = 25\text{ °C}$

Terminating source impedance:

$Z_S = 50\ \Omega$

Terminating load impedance:

$Z_L = 2\text{ k}\Omega \parallel 3\text{ pF}$

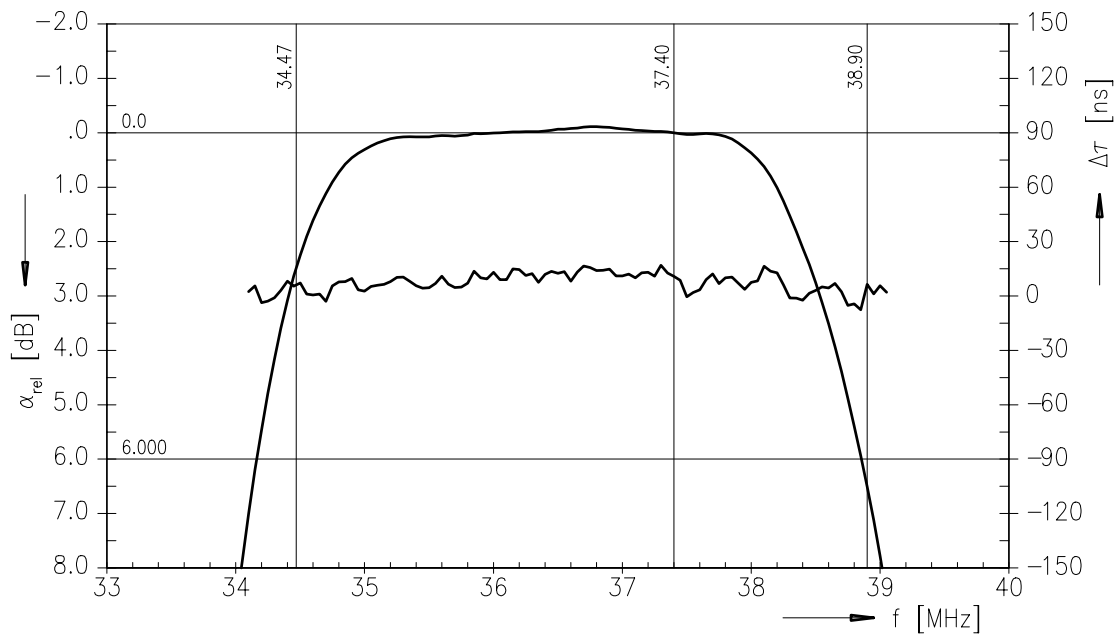
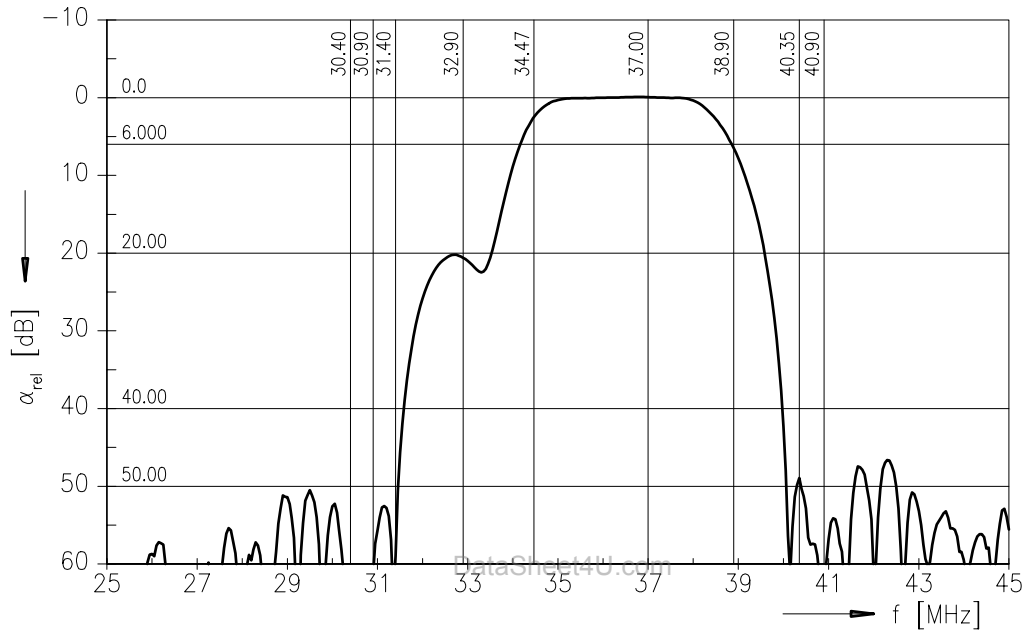
		min.	typ.	max.	
Insertion attenuation					
	α				
Reference level for the following data	37,40 MHz	13,3	14,8	16,3	dB
Relative attenuation					
	α_{rel}				
Picture carrier	38,90 MHz	5,3	6,3	7,3	dB
Color carrier	34,47 MHz	1,5	2,5	3,5	dB
Sound carrier	32,90 MHz	19,3	20,3	21,3	dB
Adjacent picture carrier	30,90 MHz	48,0	61,0	—	dB
	30,40 MHz	48,0	62,0	—	dB
	31,40 MHz	44,0	65,0	—	dB
Adjacent sound carrier	40,90 MHz	46,0	56,0	—	dB
	40,35 MHz	42,0	49,0	—	dB
Lower sidelobe	25,00 ... 30,90 MHz	46,0	52,0	—	dB
Upper sidelobe	40,90 ... 45,00 MHz	42,0	49,0	—	dB
Reflected wave signal suppression					
1,2 μ s ... 6,0 μ s after main pulse (test pulse 250 ns, carrier frequency 37,40 MHz)		42,0	52,0	—	dB
Feedthrough signal suppression					
1,1 μ s ... 1,0 μ s before main pulse (test pulse 250 ns, carrier frequency 37,40 MHz)		50,0	56,0	—	dB
Group delay ripple (p-p)	$\Delta\tau$		40		ns
Impedance at 37,40 MHz					
Input:	$Z_{IN} = R_{IN} \parallel C_{IN}$	—	1,4 14,6	—	k Ω pF
Output:	$Z_{OUT} = R_{OUT} \parallel C_{OUT}$	—	2,4 3,6	—	k Ω pF
Temperature coefficient of frequency	TC_f	—	-72	—	ppm/K



SAW Components **J 1956 M**
IF Filter for Intercarrier Applications **38,90 MHz**

Data Sheet

Frequency response

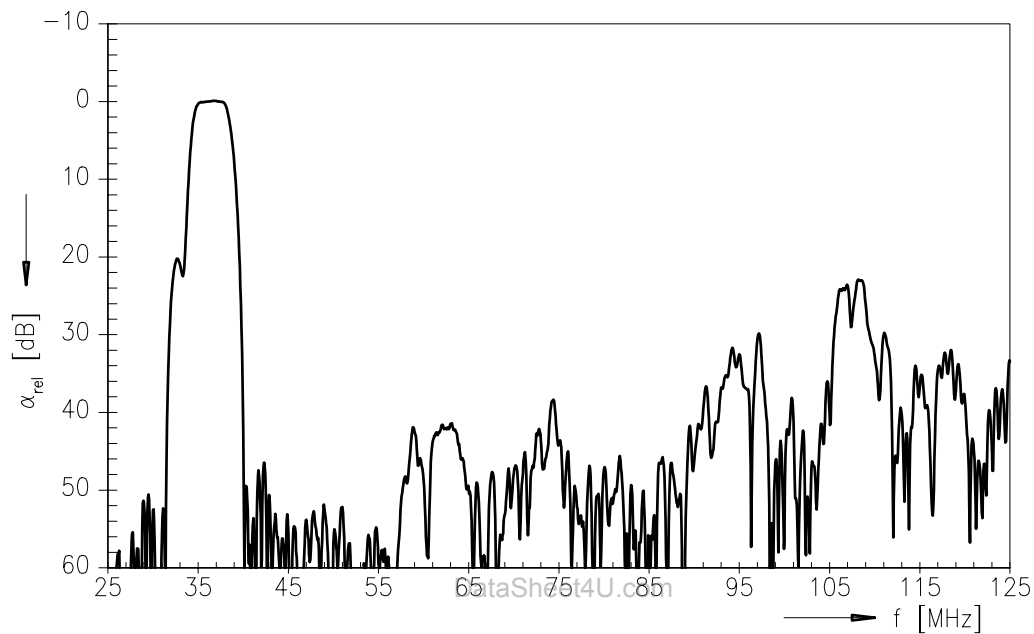




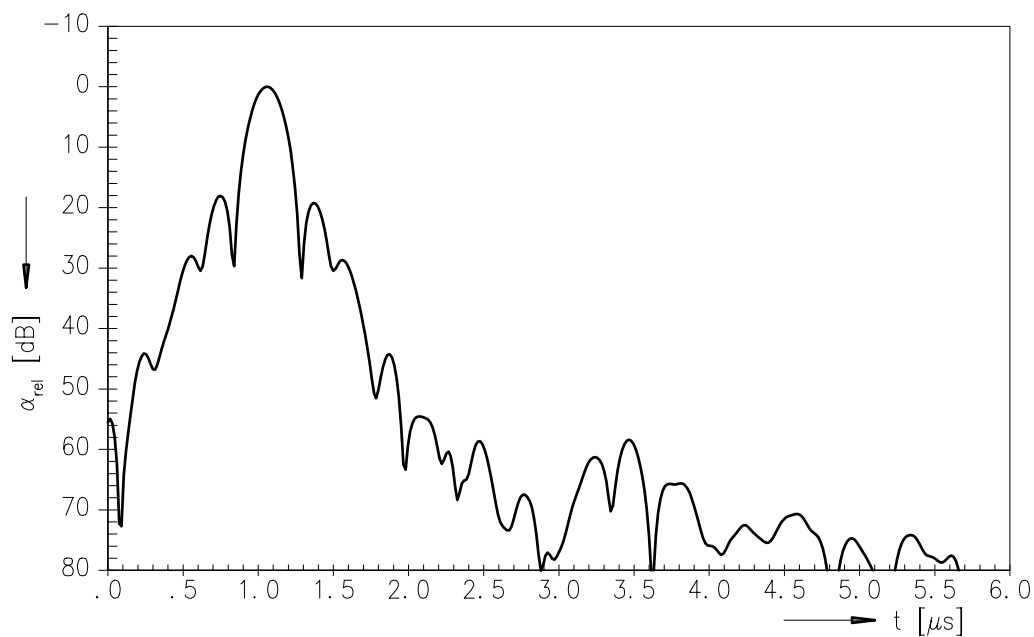
SAW Components	J 1956 M
IF Filter for Intercarrier Applications	38,90 MHz

Data Sheet

Frequency response



Time domain response



**SAW Components****J 1956 M****IF Filter for Intercarrier Applications****38,90 MHz****Data Sheet**

et4U.com

DataSheet4U.com

Published by EPCOS AG**Surface Acoustic Wave Components Division, OFW E UE****P.O. Box 80 17 09, D-81617 München**

© EPCOS AG 1999. All Rights Reserved.

As far as patents or other rights of third parties are concerned, liability is only assumed for components per se, not for applications, processes and circuits implemented within components or assemblies.

The information describes the type of component and shall not be considered as assured characteristics.

Terms of delivery and rights to change design reserved.

For questions on technology, prices and delivery please contact the sales offices of EPCOS AG or the international representatives.

Due to technical requirements components may contain dangerous substances. For information on the type in question please also contact one of our sales offices.