

# JG-33F

# THREE-PHASE SOLID STATE RELAY



### Features

- MOSFET Output
- DC Control
- Low on-state resistance
- Photo isolation
- Standard panel mount package
- 2500Vrms Dielectric strength

### INPUT

Control voltage range	3-32VDC
Must operate voltage	3VDC
Must release voltage	1.0VDC
Maximum input current	28mA(@32VDC)

### DESCRIPTION

JG-33F Series offer 3-32VDC input control and use MOSFET technology to provide an economical and reliable method of switching medium and high power DC loads. These relays combine low on-state resistance with fast switching times. They are available with switching currents 10A,30A at 220V and 400V and 500V.

### OUTPUT (D220D10)

Load Voltage Range	25/220/400/500VDC
Load Current Range <sup>(2)</sup>	10/30A
Max Off-State Leakage Current @ Rated Voltage	0.1mA
Max On-State Resistance	0.2 Ω
Max Turn-On Time	0.5ms
Max Turn-Off Time	0.5ms
Max Off-State Voltage	250VDC

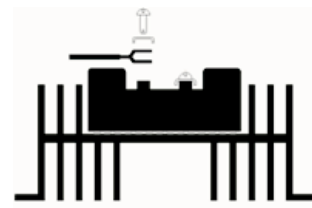
### PRECAUTIONS

1. Inductive loads must be diode suppressed.
2. Input and output polarity must be observed.
3. Heat sinking required,for derating curves see CHARACTERISTIC DATA.

### GENERAL

Dielectric strength (Input/Output/Base)		2500Vrms 1min.
Insulation resistance		1000MΩ 500VDC
Ambient temperature	Operating	-30°C to +80°C
	Storage	-30°C to +100°C
Unit weight		Max. 80g

Notes : (1) All parameters at 25 °C  
(2)See CHARACTERISTIC DATA

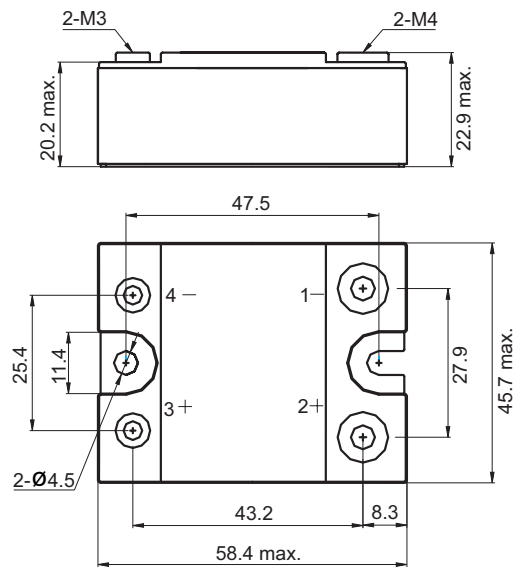


## ORDERING INFORMATION

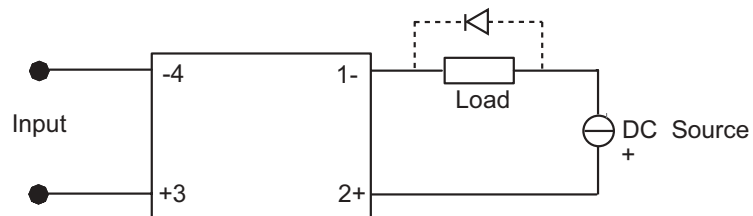
Type	JG-33F /	D	400	D	XXX
Input voltage	D: DC type 3~32 VDC				
Nominal Voltage	24, 30, 50, 100, 150, 200, 400, 500VDC				
Load Current	D10: 10Amp D30: 30Amp				
Customer special request code					

## OUTLINE DIMENSIONS, WIRING DIAGRAM AND MOUNTING HOLES

### DIMENSIONS



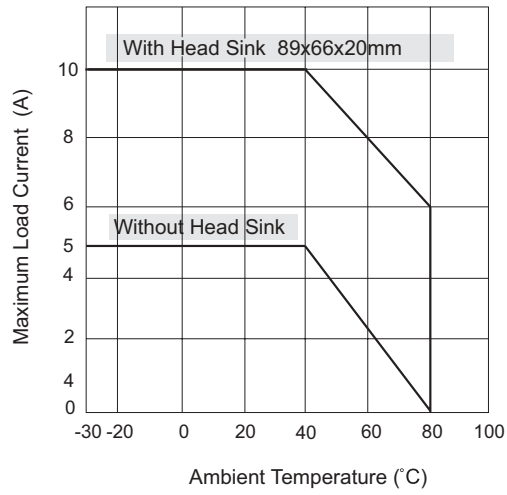
### SCHEMATICS



Inductive loads must be diode suppressed.

## CHARACTERISTICS DATA

(D220D10)



Maximum Load Current vs. Ambient Temp.