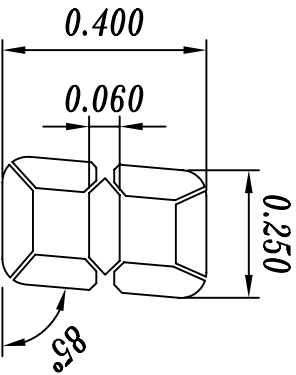


PIN NO	CDM	PIN NO	CDM
1	CDM	21	4A
2	-	22	4F
3	-	23	4G
4	-	24	3B
5	1E	25	3A
6	1D	26	3F
7	1C	27	3G
8	DP1	28	COL
9	2E	29	2B
10	2D	30	2A
11	2C	31	2F
12	DP2	32	2G
13	3E	33	-
14	3D	34	1B
15	3C	35	1A
16	DP3	36	1F
17	4E	37	1G
18	4D	38	-
19	4C	39	-
20	4B	40	CDM

- NOTE:
1. STATIC
  2. VOLTAGE: 3-5V
  3. DISPLAY TYPE: TRANSPARENT
  4. VIEWING ANGLE: 6:00
  5. OPERATING TEMP: 0°C TO 50°C
  6. STORAGE TEMP: -10°C TO 60°C
  7. CONNECTION: ZEBBRA



REV.	DESCRIPTION	BY	DATE
	JHD CO LTD		
DRAWN BY: JHD		SCALE: /	
CHECKED BY:		UNIT: Inch	
APPROVED BY:		REV: -	
LCD NO.: JH046		SHEET 1 OF 1	
DATE:			