



actual size

Oscillator JT21G · JT21GE · TCXO for GPS

- Temp. Compensated Crystal Oscillator, 2.0 x 1.6 mm
- special type for navigation systems (GPS etc.)
- high stability ± 0.5 ppm
- temperature range up to -40 °C ~ $+85$ °C
- JT21GE with enable/disable function



RoHS compliant



Pb free



REACH compliant



Conflict mineral free

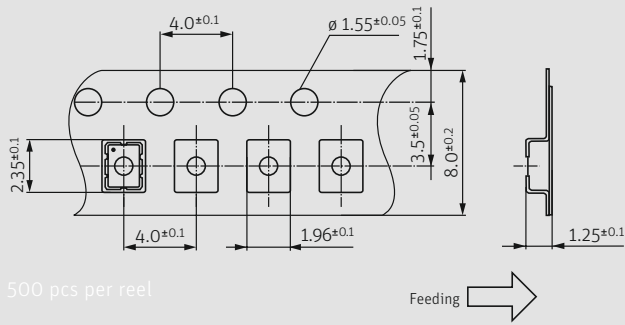
GENERAL DATA		ENABLE / DISABLE FUNCTION	
TYPE	JT21G TCXO / JT21GE with E/D		
frequency range	26.0 / 38.40 MHz (other frequ. case by case)		
frequency tolerance / stability	at +25°C	± 2.0 ppm (incl. 2x reflow)	
	temperature	± 0.5 ppm (stability code E)	
	aging first year	± 1 ppm	
	supply voltage	± 0.2 ppm (at $V_{DC} \pm 5\%$)	
	load change	± 0.2 ppm (at 10 K Ω // 10 pF +/-10 %)	
current consumption	2.0 mA (at 26.0 / 38.40 MHz)		
supply voltage V_{DC}	1.8 / 2.5 / 2.8 / 3.0 / 3.3 ($\pm 5\%$) *		
temperature	operating	-30 °C ~ $+85$ °C (temperature code M)	
	storage	-40 °C ~ $+85$ °C	
output	load nom.	10 K Ω // 10 pF	
	level min.	0.8 V _{pp} (clipped sine)	
temperature slope max.	0.1 ppm / °C (at max. temp step 2 °C)		
static frequency hysteresis (max. frequency difference at +25°C, measured before and after a full cold-hot-cold cycle)	0.6 ppm		
start-up time max.	2.5 ms		
phase noise	at 100 Hz	-117 dBc/Hz typ.	
	at f_0	-137 dBc/Hz typ.	
26 MHz	at 1 KHz	-149 dBc/Hz typ.	
	at 10 KHz	-149 dBc/Hz typ.	
PIN #1 (E/D CONTROL)	PIN #3 (OUTPUT)		
open	active		
high "1" ($V_{IH} \geq 0.8 V_{DC}$)	active		
low "0" ($V_{IL} \leq 0.2 V_{DC}$)	high impedance		
stop function (JT21GE only):			
- oscillator stops			
- output high impedance			
- disabled supply current: 2 μ A typ. / 5.5 μ A max.			
PACKAGING NOTE			
- standard packing unit is 500 pieces per reel			
- customized quantities on request			
NOTE			
- JT21G: connect pin #1 to GND / JT21GE: pin #1 is enable/disable			
- external AC coupling for output recommended			
- for best supply noise rejection, connect a capacitor closely to the supply voltage pins			
- a separate voltage supply rail ensures best phase noise			
* other nominal supply voltages within 1.8 V ~ 3.3 V need to be specified, ask for availability			

DIMENSIONS					
				TCXO JT21G	TCXO with e/d JT21GE
top view	side view	bottom view	pad layout	# 1: GND # 2: GND # 3: output # 4: V_{DC}	# 1: e/d # 2: GND # 3: output # 4: V_{DC}
				pin connection	in mm

ORDER INFORMATION					
0	frequency	type	frequency stability code	operating temp. code	supply voltage
Oscillator	26.0 = 26.0 MHz 38.40 = 38.40 MHz	JT21G JT21GE	E = ± 0.5 ppm	M = -30 °C ~ $+85$ °C K = -40 °C ~ $+85$ °C	1.8 = 1.8 V 2.5 = 2.5 V 2.8 = 2.8 V 3.0 = 3.0 V 3.3 = 3.3 V
Example: 0 26.0-JT21G-E-M-3.3-LF (Suffix LF = RoHS compliant / Pb free)					

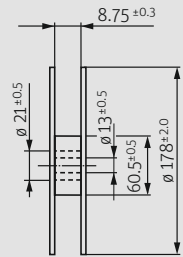
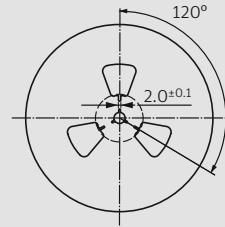
Oscillator JT21G · JT21GE · TCXO for GPS

TAPING SPECIFICATION



500 pcs per reel

Feeding →



in mm

MARKING

frequency

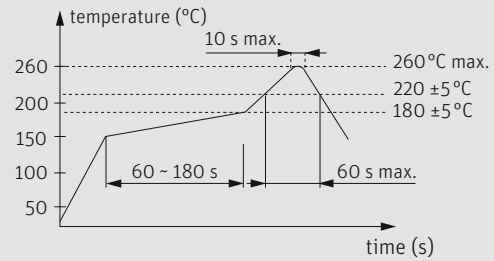
company code / stability code / date code

date code: A ~ M: Jan. - Dec.

9: 2019 0: 2020 1: 2021 2: 2022 3: 2023 4: 2024

Jan.	Febr.	Mar.	Apr.	May	June
A	B	C	D	E	F
July	Aug.	Sept.	Oct.	Nov.	Dec.
G	H	J	K	L	M

REFLOW SOLDERING PROFILE



note: parts are also suitable for soldering systems with lead (Pb) content