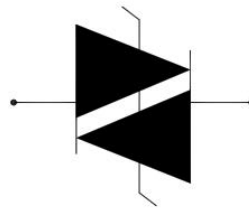
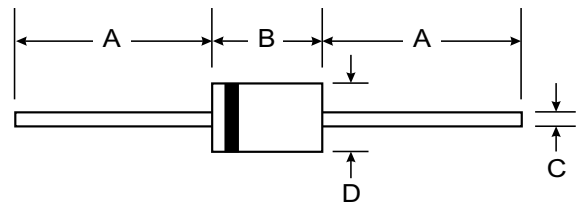
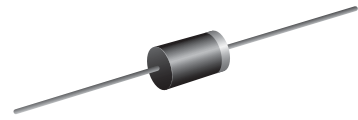

Features

- Excellent capability of absorbing transient surge
- Quick response to surge voltage (ns Level)
- Glass passivated junctions
- High voltage lcmp ignitors

Mechanical Data

- Case : DO-15 Molded plastic
- Epoxy : UL94V-O rate flame retardant
- Lead : Axial lead solderable per MIL-STD-202, Method 208 guaranteed
- Polarity : Color band denotes cathode end
- Mounting position : Any
- Weight : 0.465 gram



DO-15		
Dim	Min	Max
A	25.40	—
B	5.50	7.62
C	0.686	0.889
D	2.60	3.60
All Dimensions in mm		

Functional Diagram

Maximum Ratings and Electrical Characteristics $T_A = 25^\circ\text{C}$ unless otherwise specified

Single phase, half wave, 60Hz, resistive or inductive load. For capacitive load, derate current by 20%.

Symbol	Parameter	Value	Units
I_{TSM}	Maximum surge on-state current non-repetitive one cycle peak value (50Hz)	16.7	A
di_T/dt	Critical rate-of-rise of on-state current	80	A
I_T	On-state RMS Current	1	A
T_{stg}	Storage temperature range	-40 to +125	$^\circ\text{C}$
T_j	Operating junction temperature range	-40 to +125	$^\circ\text{C}$

Electrical Characteristics (@ 25°C Unless Otherwise Specified)

Part Number	V _{DRM@IDRM}		V _{BO}		I _{BO}	v _{T@IT=1A}	R _s	I _H
	V	uA	V		uA	V	K	mA
	Min	Max	Min	Max	Max	Max	Min	Min
K0900G	70	1	80	97	50	2	0.1	10
K1050G	90	1	95	113	50	2	0.1	10
K1200G	100	1	110	125	50	2	0.1	10
K1300G	110	1	120	138	50	2	0.1	10
K1400G	120	1	130	146	50	2	0.1	10
K1500G	130	1	140	170	50	2	0.1	10
K1800G	160	1	170	195	50	2	0.1	10
K2000G	180	1	190	215	50	2	0.1	10
K2200G	190	1	205	230	50	2	0.1	10
K2400G	200	1	220	250	50	2	0.1	10
K2600G	220	1	240	270	50	2	0.1	10

Electrical Characteristics (@ 25°C Unless Otherwise Specified)

Symbol	Parameter
V _{DRM}	Peak off-state voltage
I _{DRM}	Off-state current
V _s	Switching voltage
I _s	Switching current
R _s	Switching resistance
V _T	On-state voltage
I _H	Holding current
V _{BO}	Break over Voltage
I _{BO}	Break over current

V-I Curve

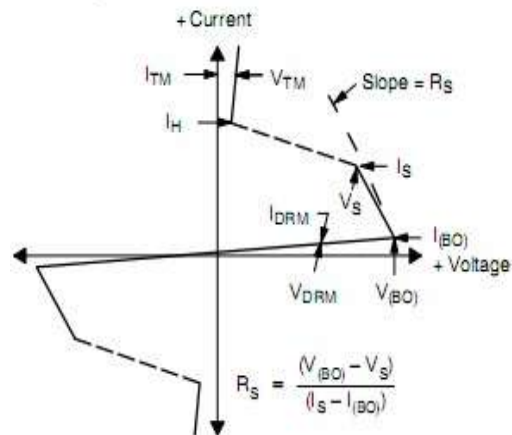


Figure 1-Normalized vs change vs. junction temperature

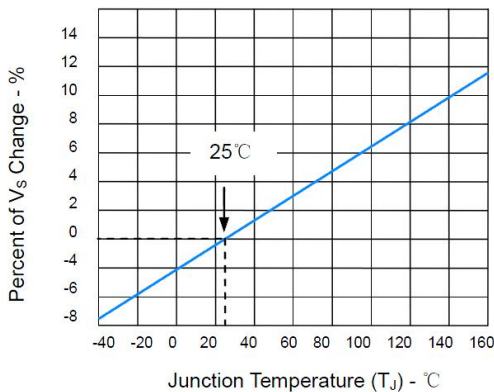
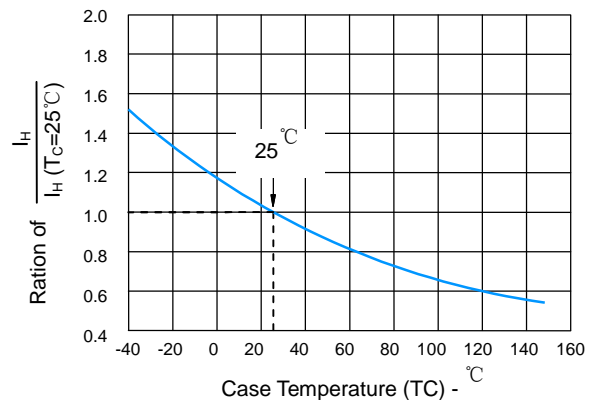
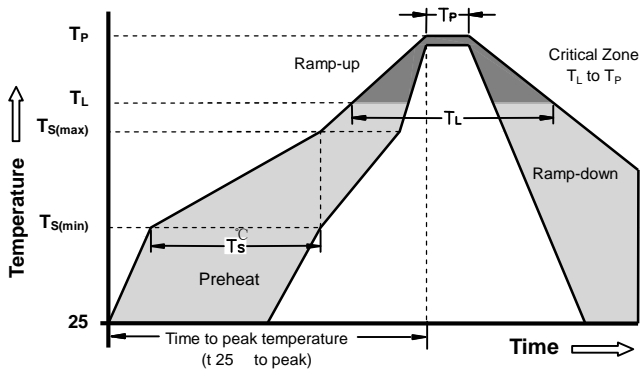


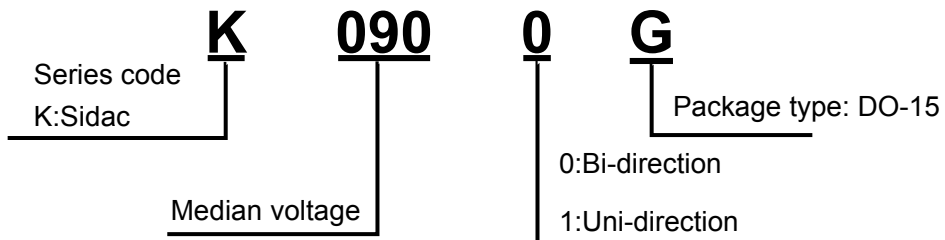
Figure 2- Normalized DC holding current vs.case temperature



Soldering Parameters



Reflow Condition		Lead-free assembly
Pre Heat	-Temperature Min ($T_{s(min)}$)	+150°C
	-Temperature Max ($T_{s(max)}$)	+200°C
	-Time (min to max) (t_s)	60 -180 Seconds
Average ramp up rate (Liquidus Temp T_L) to peak		3°C/Second Max
$T_{s(max)}$ to T_L - Ramp-up Rate		3°C/Second Max
Reflow	- Temperature (T_L) (Liquidus)	+217°C
	- Time (min to max) (t_s)	60 -150 Seconds
Peak Temperature (T_P)		260 +0/-5°C
Time within 5°C of actual peak Temperature (t_p)		8-15 Seconds
Ramp-down Rate		6°C/Second Max
Time 25°C to peak Temperature (T_P)		8 minutes Max
Do not exceed		+260°C



Ordering Information