

# SHINDENGEN

## HVX-2 Series Power MOSFET

N-Channel Enhancement type

**2SK2677**  
**(FP10W90HVX2)**

**900V 10A**

### FEATURES

- Input capacitance (Ciss) is small. Especially, input capacitance at 0 bias is small.
- The static Rds(on) is small.
- The switching time is fast.
- Avalanche resistance guaranteed.

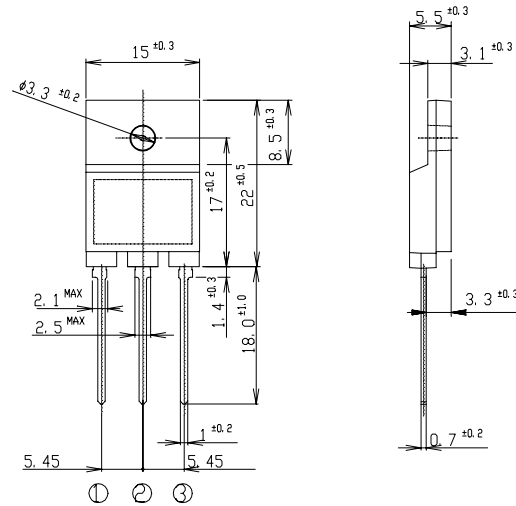
### APPLICATION

- Switching power supply of AC 240V input
- High voltage power supply
- Inverter

### OUTLINE DIMENSIONS

Case : ITO-3P

(Unit : mm)



① : G  
② : D  
③ : S

### RATINGS

● Absolute Maximum Ratings (Tc = 25°C)

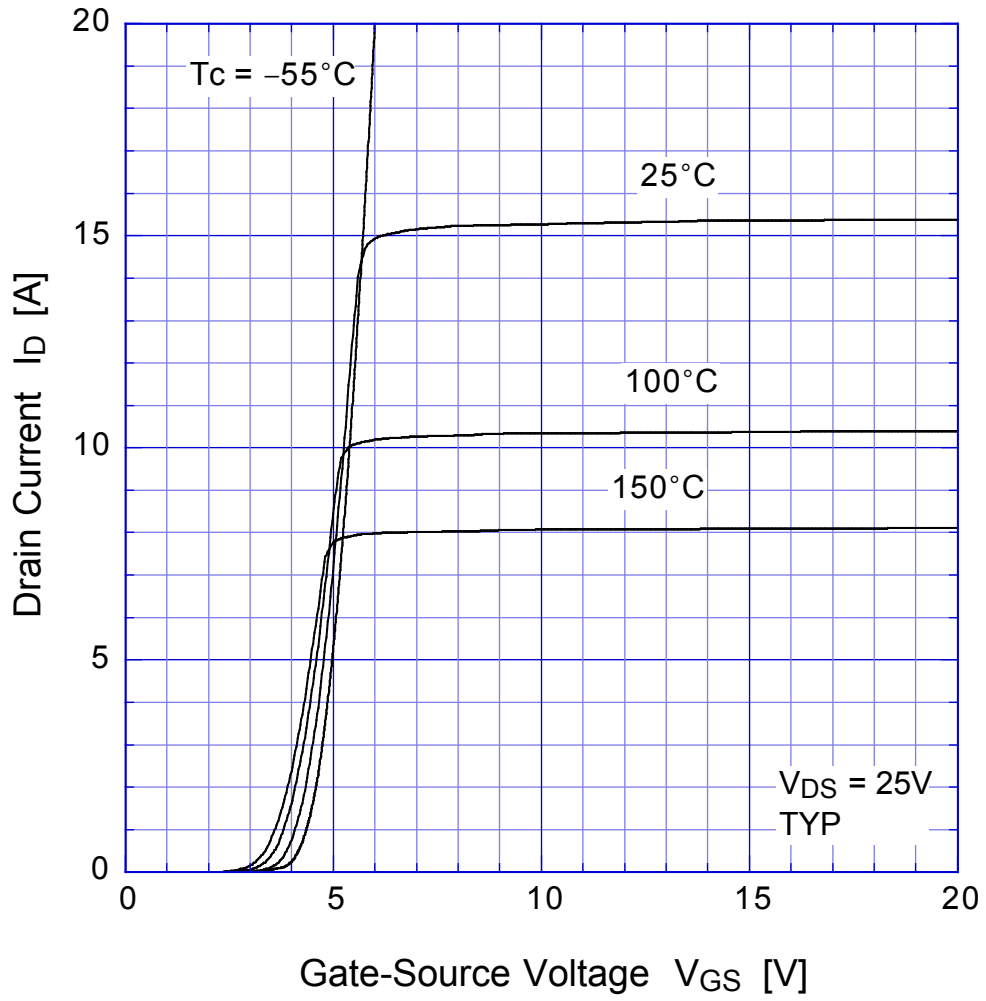
Item	Symbol	Conditions	Ratings	Unit
Storage Temperature	T <sub>stg</sub>		-55~150	°C
Channel Temperature	T <sub>ch</sub>		150	
Drain-Source Voltage	V <sub>DSS</sub>		900	V
Gate-Source Voltage	V <sub>GSS</sub>		±30	
Continuous Drain Current (DC)	I <sub>D</sub>		10	A
Continuous Drain Current (Peak)	I <sub>DP</sub>	Pulse width ≤ 10 μs, Duty cycle ≤ 1/100	20	
Continuous Source Current (DC)	I <sub>S</sub>		10	
Total Power Dissipation	P <sub>T</sub>		65	W
Repetitive Avalanche Current	I <sub>AR</sub>	T <sub>ch</sub> = 150°C	10	A
Single Avalanche Energy	E <sub>AS</sub>	T <sub>ch</sub> = 25°C	260	mJ
Repetitive Avalanche Energy	E <sub>AR</sub>	T <sub>ch</sub> = 25°C	26	
Dielectric Strength	V <sub>dis</sub>	Terminals to case, AC 1 minute	2	kV
Mounting Torque	TOR	( Recommended torque : 0.5 N·m )	0.8	N·m

● Electrical Characteristics  $T_c = 25^\circ\text{C}$ 

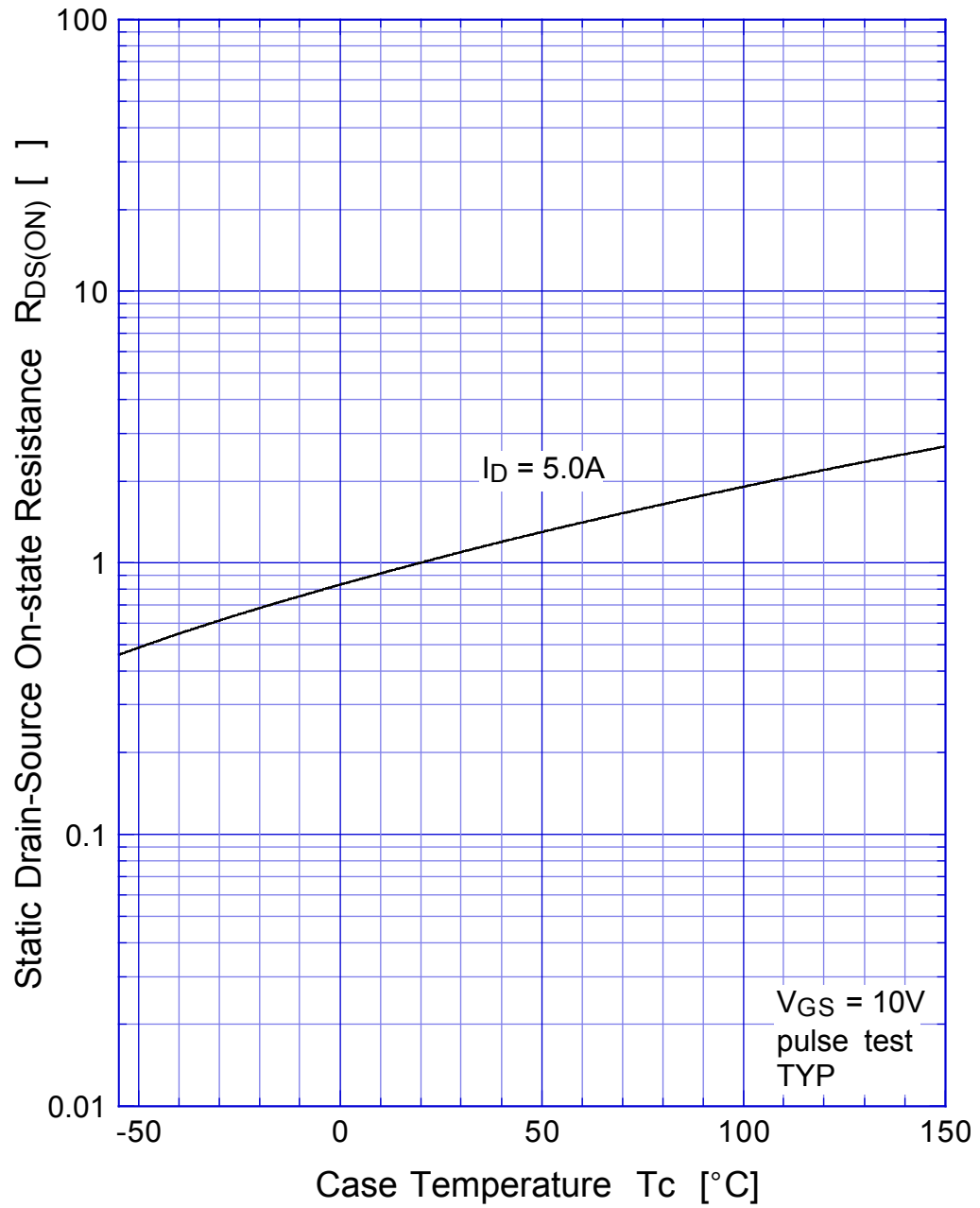
Item	Symbol	Conditions	Min.	Typ.	Max.	Unit
Drain-Source Breakdown Voltage	$V_{(BR)DSS}$	$I_D = 1\text{mA}$ , $V_{GS} = 0\text{V}$	900			V
Zero Gate Voltage Drain Current	$I_{DSS}$	$V_{DS} = 900\text{V}$ , $V_{GS} = 0\text{V}$			250	$\mu\text{A}$
Gate-Source Leakage Current	$I_{GSS}$	$V_{GS} = \pm 30\text{V}$ , $V_{DS} = 0\text{V}$			$\pm 0.1$	
Forward Transconductance	$g_{fs}$	$I_D = 5\text{A}$ , $V_{DS} = 10\text{V}$	4.8	8.0		S
Static Drain-Source On-state Resistance	$R_{DS(ON)}$	$I_D = 5\text{A}$ , $V_{GS} = 10\text{V}$		1.05	1.4	$\Omega$
Gate Threshold Voltage	$V_{TH}$	$I_D = 1\text{mA}$ , $V_{DS} = 10\text{V}$	2.5	3.0	3.5	V
Source-Drain Diode Forward Voltage	$V_{SD}$	$I_S = 5\text{A}$ , $V_{GS} = 0\text{V}$			1.5	
Thermal Resistance	$\theta_{jc}$	junction to case			1.92	$^\circ\text{C}/\text{W}$
Total Gate Charge	$Q_g$	$V_{DD} = 400\text{V}$ , $V_{GS} = 10\text{V}$ , $I_D = 10\text{A}$		90		nC
Input Capacitance	$C_{iss}$			2150		
Reverse Transfer Capacitance	$C_{rss}$	$V_{DS} = 25\text{V}$ , $V_{GS} = 0\text{V}$ , $f = 1\text{MHz}$		50		pF
Output Capacitance	$C_{oss}$			210		
Turn-On Time	$t_{on}$	$I_D = 5\text{A}$ , $R_L = 30\Omega$ , $V_{GS} = 10\text{V}$		140	250	ns
Turn-Off Time	$t_{off}$			440	740	

# 2SK2677

## Transfer Characteristics



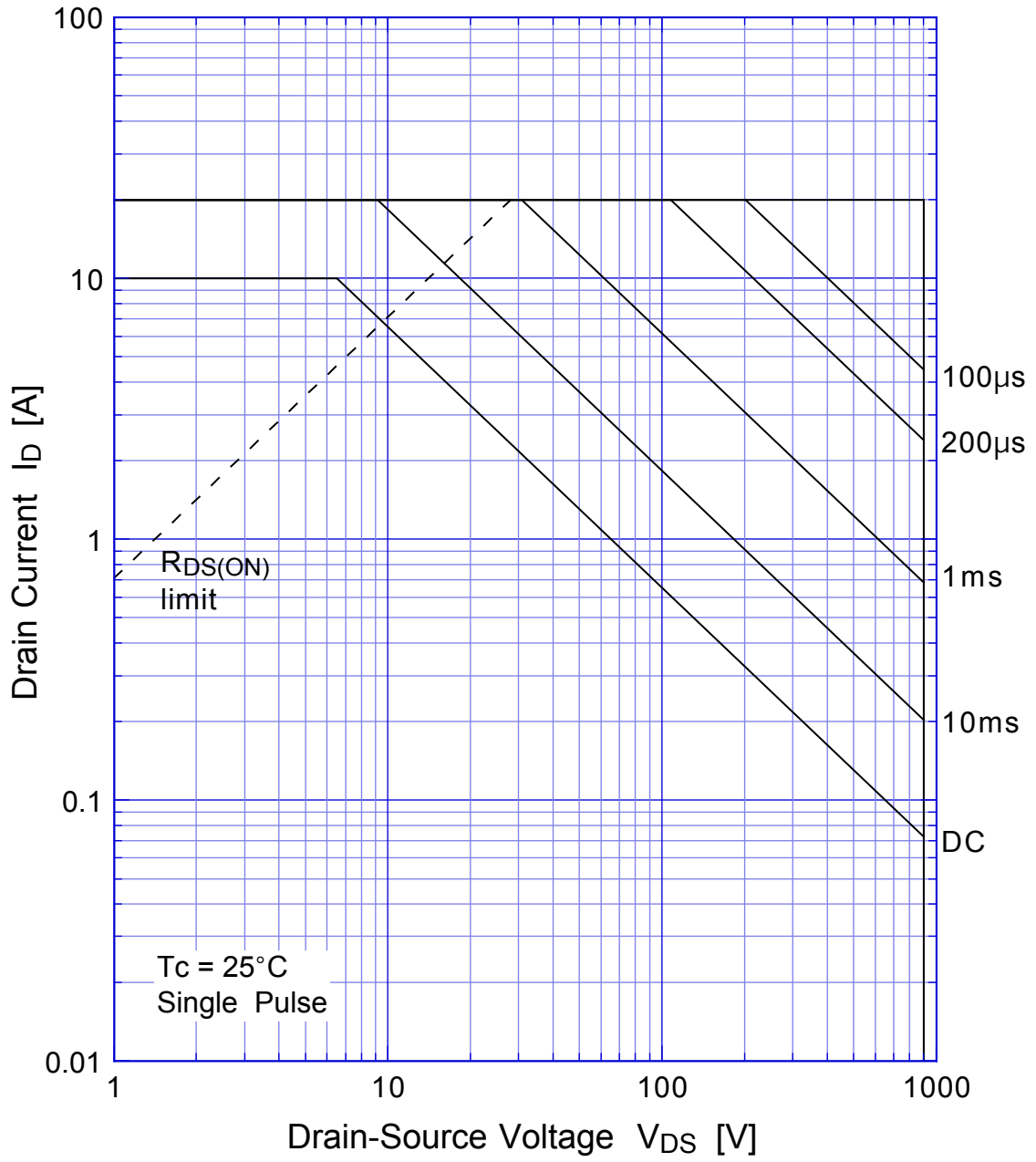
## 2SK2677 Static Drain-Source On-state Resistance



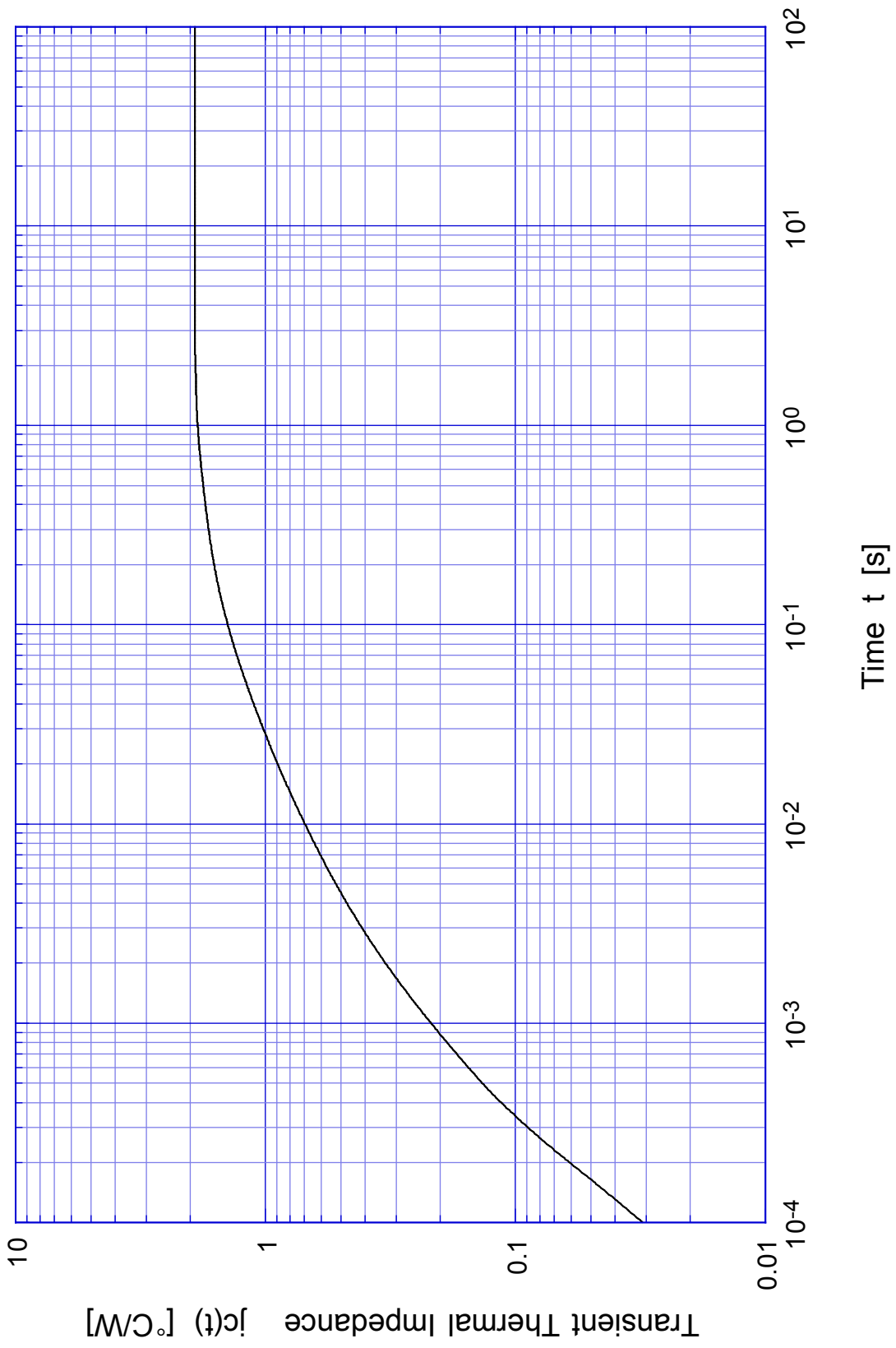
2SK2677 Gate Threshold Voltage



# 2SK2677 Safe Operating Area



# 2SK2677 Transient Thermal Impedance

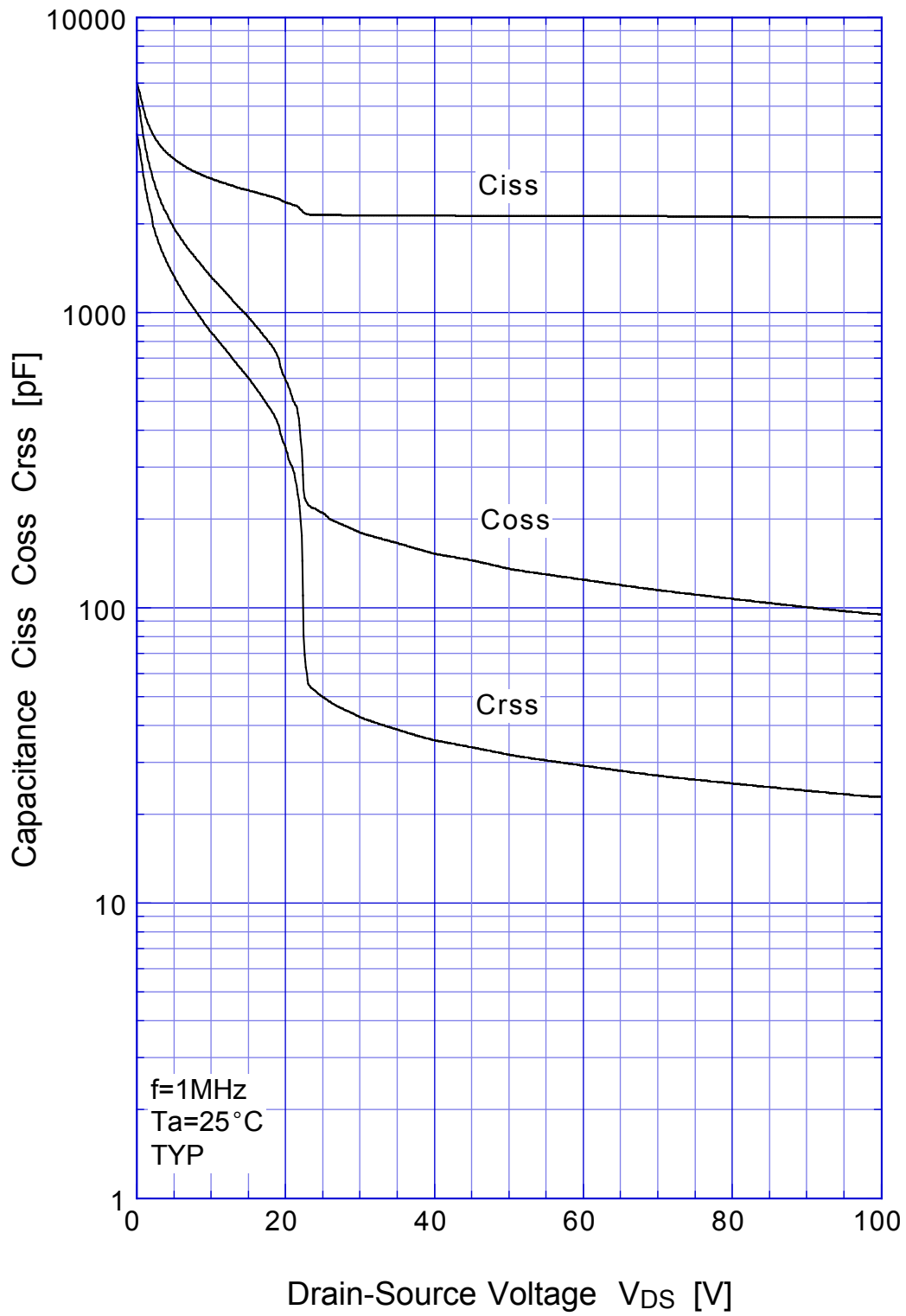


## 2SK2677 Single Avalanche Energy Derating

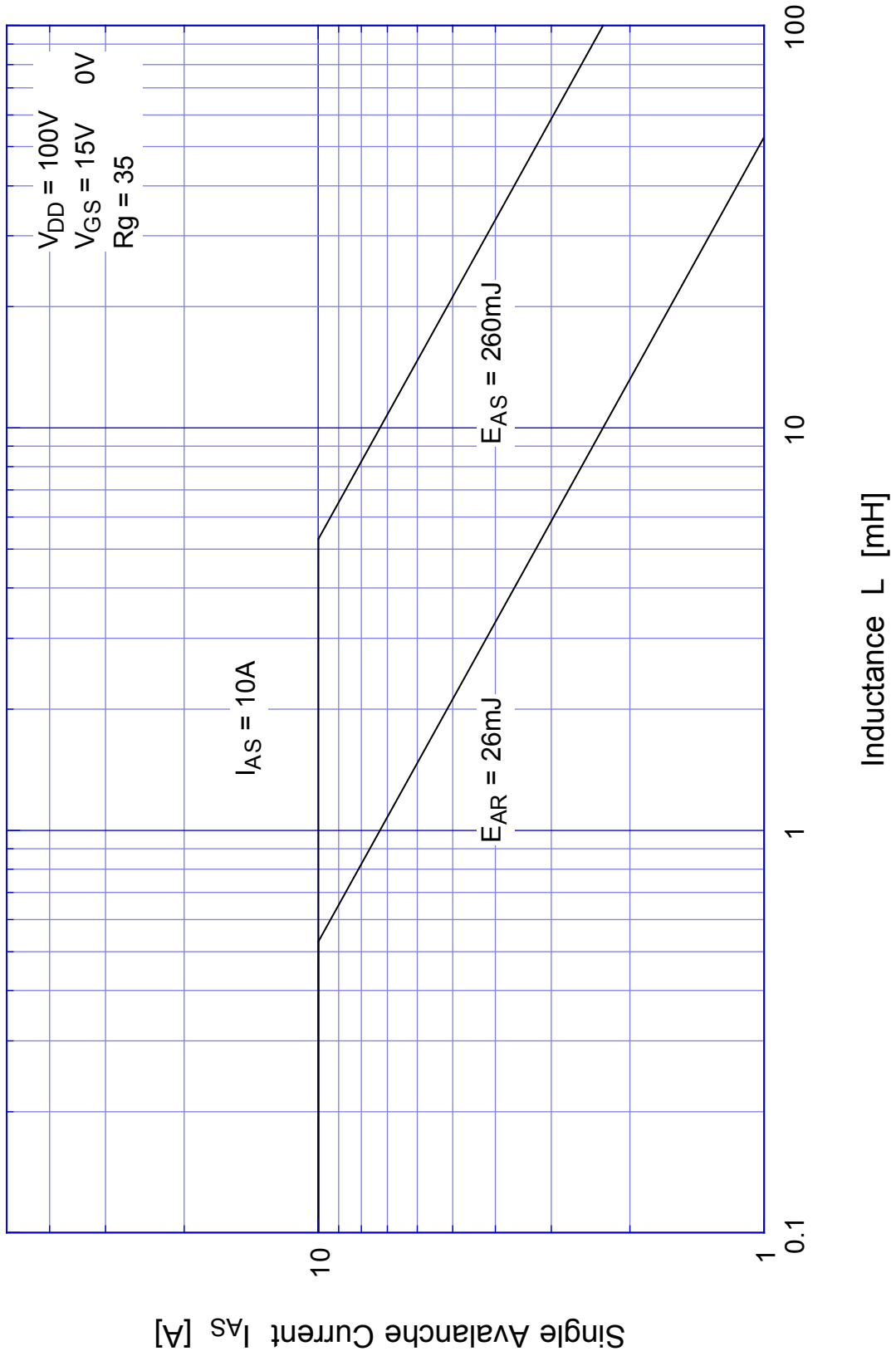




# 2SK2677 Capacitance



# 2SK2677 Single Avalanche Current - Inductive Load



2SK2677

Power Derating



## 2SK2677 Gate Charge Characteristics

