



Features/Benefits

- **Double stroke version**
- **Excellent tactile feel**
- **Low profile**
- **Quiet actuation**
- **RoHS compliant**

Typical Applications

- **Automotive**
 - **Window lift**
 - **Sun-roof control**
- **Multi-function devices**

Construction

FUNCTION: Momentary action
CONTACT ARRANGEMENT: 2 make contacts, SPST
TERMINALS: Gullwing type for SMT

Mechanical

OPERATING FORCE FIRST STROKE: 3.7 + 0.8 - 0.5N
OPERATING FORCE SECOND STROKE: 6.5 N + 0.8 - 0.5N
ELECTRICAL TRAVEL FIRST STROKE: 0.5 mm
ELECTRICAL TRAVEL SECOND STROKE: 0.85 mm
TOTAL TRAVEL: 1 mm
OPERATING LIFE: 30,000 actuations

Packaging

Switches are delivered on continuous tape, in reels of 500 pieces

NOTE: Product to be offered as compatible with the lead free soldering profile on Q3 2006.

NOTE: Specifications listed above are for switches with standard options. For information on specific and custom switches, consult Customer Service Center.

Electrical

POWER MIN / MAX: .02 VA / 1 VA
VOLTAGE MIN / MAX: 20 mV / 30 VDC
CURRENT MIN / MAX DC: .01 mA / 50 mA
CONTACT RESISTANCE: ≤ 100 mΩ
INSULATION RESISTANCE: ≥ 1GΩ
BOUNCE TIME: 5 ms

Environmental

OPERATING TEMPERATURE: -40°C to 85°C.
STORAGE TEMPERATURE: -50°C to 95°C.
WASHABLE: No

Process

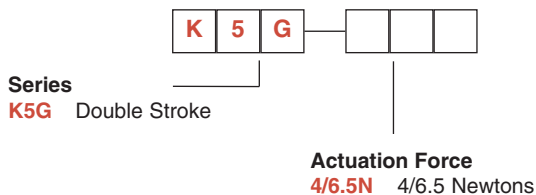
SOLDERING: Lead Free reflow compatible in accordance with CEI 60068-2-58

Materials

CONTACTS: Au over Ni
SOLDERING PINS: Au
HOUSING: Thermoplastic UL 94 H-B

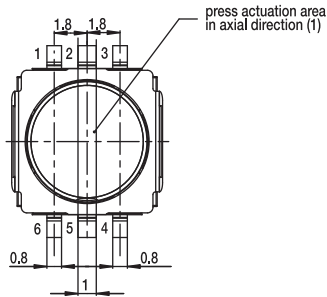
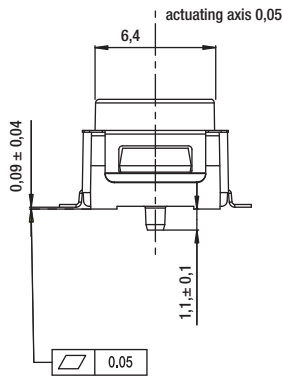
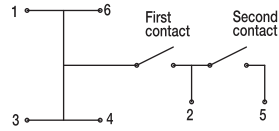
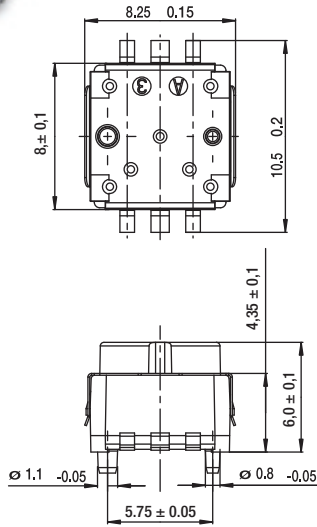
How To Order

Our easy build-a-switch concept allows you to mix and match options to create the switch you need. To order, select desired option from each category and place it in the appropriate box.

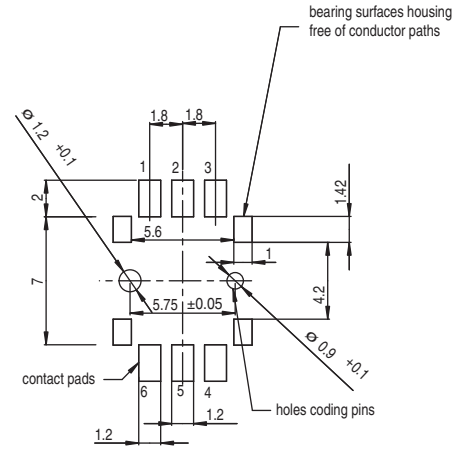


K5G Series Snap Action Key Switch

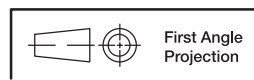
K5G DOUBLE STROKE VERSION



PCB LAYOUT, MOUNTING SIDE



Key Switches



Dimensions are shown: mm (inch)
Specifications and dimensions subject to change

www.ittcannon.com