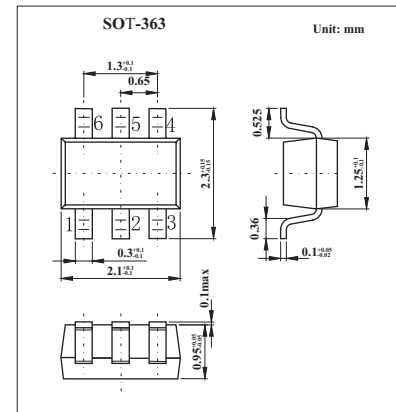
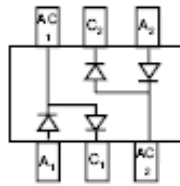


Quad Surface Mount Switching Diode Array KAV99DW(BAV99DW)

■ Features

- Fast Switching Speed
- Ultra-Small Surface Mount Package
- For General Purpose Switching Applications
- High Conductance



■ Absolute Maximum Ratings $T_a = 25^\circ\text{C}$

| Parameter | Symbol | Rating | Unit |
|---|-----------------|-------------|------------------|
| Non-Repetitive Peak Reverse Voltage | V_{RM} | 100 | V |
| Peak Repetitive Reverse Voltage | V_{RRM} | | |
| Working Peak Reverse Voltage | V_{RWM} | 75 | V |
| DC Blocking Voltage | V_R | | |
| RMS Reverse Voltage | $V_{R(RMS)}$ | 53 | V |
| Forward Continuous Current | I_{FM} | 215 | mA |
| Non-Repetitive Peak Forward Surge Current @ $t = 1.0 \mu\text{s}$ | | 2.0 | |
| @ $t = 1.0\text{ms}$ | I_{FSM} | 1.0 | A |
| @ $t = 1.0\text{s}$ | | 0.5 | |
| Power Dissipation | P_d | 200 | mW |
| Thermal Resistance Junction to Ambient Air | $R_{\theta JA}$ | 625 | K/W |
| Operating and Storage Temperature Range | T, T_{STG} | -65 to +150 | $^\circ\text{C}$ |

■ Electrical Characteristics $T_a = 25^\circ\text{C}$

| Parameter | Symbol | Testconditions | Min | Typ | Max | Unit |
|------------------------------|----------|--|-----|-----|-------|---------------|
| Maximum Forward Voltage | V_{FM} | $I_F = 1.0\text{mA}$ | | | 0.715 | V |
| | | $I_F = 10\text{mA}$ | | | 0.855 | |
| | | $I_F = 50\text{mA}$ | | | 1.0 | |
| | | $I_F = 150\text{mA}$ | | | 1.25 | |
| Maximum Peak Reverse Current | I_{RM} | $V_R = 75\text{V}$ | | | 2.5 | μA |
| | | $V_R = 75\text{V}, T_j = 150^\circ\text{C}$ | | | 50 | μA |
| | | $V_R = 25\text{V}, T_j = 150^\circ\text{C}$ | | | 30 | μA |
| | | $V_R = 20\text{V}$ | | | 25 | nA |
| Junction Capacitance | C_j | $V_R = 0, f = 1.0\text{MHz}$ | | | 2 | pF |
| Reverse Recovery Time | t_{rr} | $I_F = I_R = 10\text{mA}, I_{rr} = 0.1 \times I_R, R_L = 100 \Omega$ | | | 4 | ns |

■ Marking

| | |
|---------|-----|
| Marking | KJG |
|---------|-----|