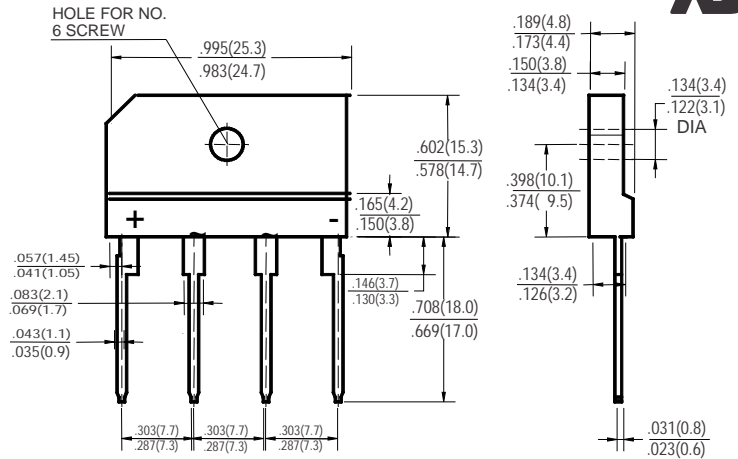


FEATURES

- UL Recognized
- Current 10 Amps
- Voltage Range 50V ~ 1000V
- Glass passivated chip junction
- High surge forward current capability
- KBJ available in 6A, 8A, 10A, 15A, 20A, 25A, 35A and 50A

MECHANICAL DATA

- Molded plastic body (UL 94V-0 rated)
- Mounting through hole for No. 6 screw
- Mounting Torque: recommend 5Kg • cm
- Polarity: As marked
- Lead: solder plated



KBJ
Dimensions in inches and (millimeters)

MAXIMUM RATINGS & ELECTRICAL CHARACTERISTICS

Rating at 25°C ambient temperature unless otherwise specified.
Single phase, half wave, 60Hz, resistive or inductive load
For capacitive load, derate current by 20%

Parameter	Symbol	KBJ 10005	KBJ 1001	KBJ 1002	KBJ 1004	KBJ 1006	KBJ 1008	KBJ 1010	Unit
Maximum Repetitive Peak Reverse Voltage	V _{RRM}	50	100	200	400	600	800	1000	V
Maximum RMS Voltage	V _{RMS}	35	70	140	280	420	560	700	V
Maximum DC Blocking Voltage	V _{DC}	50	100	200	400	600	800	1000	V
Maximum Average Forward Rectified Current @ T _c = 100°C (With Heat Sink)	I _{O (AV)}	10							A
@ T _a = 25°C (Without Heat Sink)		3.6							
Peak Forward Surge Current 8.3ms single Half Sine-Wave Superimposed on Rated Load (JEDEC Method)	I _{FSM}	150							A
I ² t for fusing (t < 8.3ms), non-repetitive	I ² t	93							A ² S
Maximum Instantaneous Forward Voltage @ 3.0A	V _F	1.1							V
Maximum DC Reverse Current at rated DC Blocking Voltage Per Element	I _R	10							µA
Typical Thermal Resistance (Note)	R _{θJA}	25							°C / W
	R _{θJC}	2.3							
Operating Temperature Range	T _J	-55 ~ +150							°C
Storage Temperature Range	T _{STG}	-55 ~ +150							°C

Note : R_{θJA} =Between Junction and Ambient , without heatsink
R_{θJC} =Between Junction and Case, with heatsink

RATING & CHARACTERISTIC CURVES

FIG.1- MAXIMUM FORWARD CURRENT DERATING CURVE

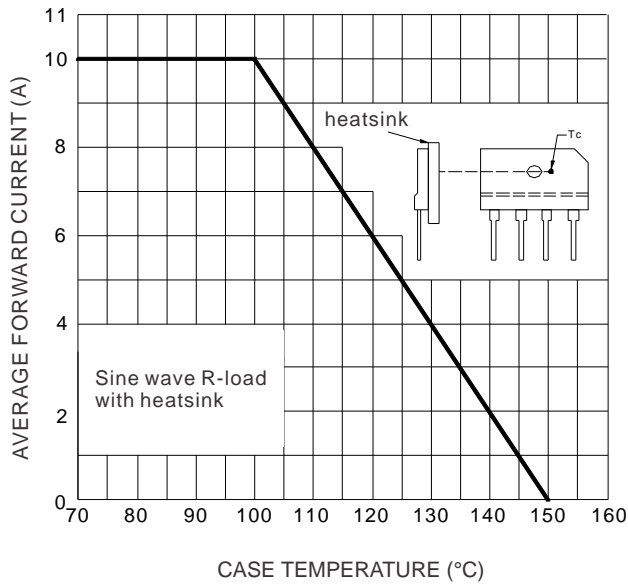


FIG.2- MAXIMUM NON-REPETITIVE FORWARD SURGE CURRENT

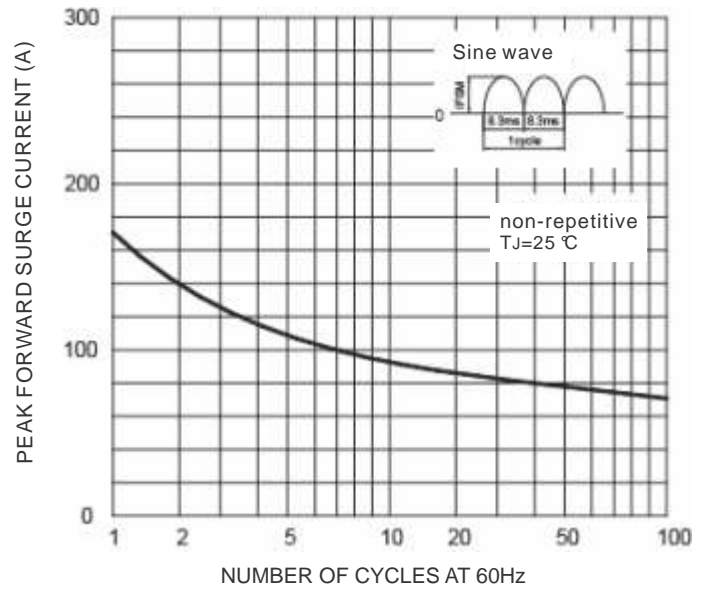


FIG.3-TYPICAL INSTANTANEOUS FORWARD CHARACTERISTICS

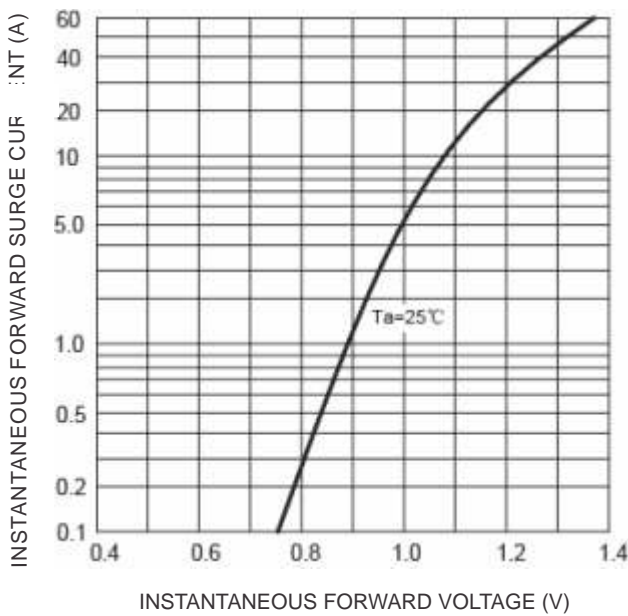


FIG.4-TYPICAL REVERSE CHARACTERISTICS

