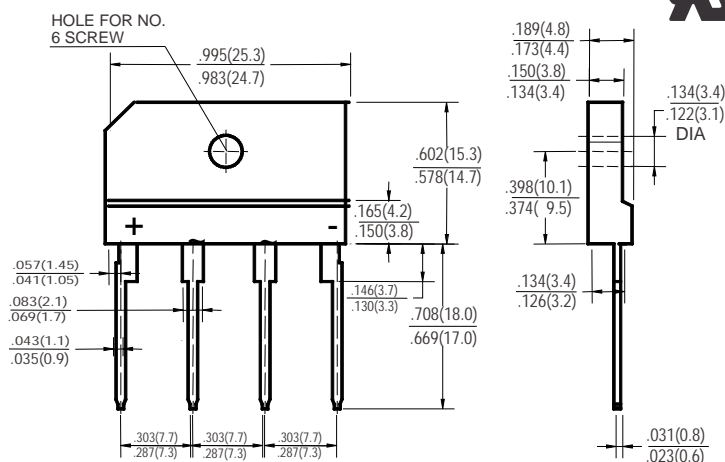


**FEATURES**

- UL Recognized
- Current 4 Amps
- Voltage Range 50V ~ 1000V
- Glass passivated chip junction
- High surge forward current capability
- KBJ available in 6A, 8A, 10A, 15A, 20A, 25A, 35A and 50A

**MECHANICAL DATA**

- Molded plastic body (UL 94V-0 rated)
- Mounting through hole for No. 6 screw
- Mounting Torque: recommend 5Kg • cm
- Polarity: As marked
- Lead: solder plated



**KBJ**  
Dimensions in inches and (millimeters)

**MAXIMUM RATINGS & ELECTRICAL CHARACTERISTICS**

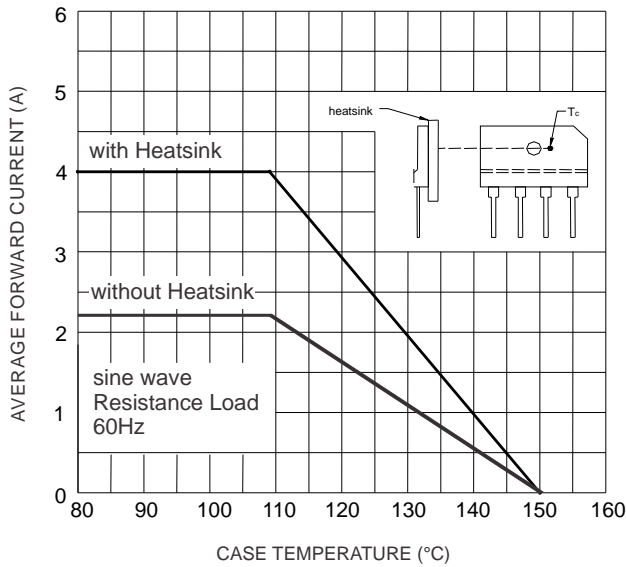
Rating at 25°C ambient temperature unless otherwise specified.  
Single phase, half wave, 60Hz, resistive or inductive load  
For capacitive load, derate current by 20%

Parameter	Symbol	KBJ 4005	KBJ 401	KBJ 402	KBJ 404	KBJ 406	KBJ 408	KBJ 410	Unit
Maximum Repetitive Peak Reverse Voltage	V <sub>RRM</sub>	50	100	200	400	600	800	1000	V
Maximum RMS Voltage	V <sub>RMS</sub>	35	70	140	280	420	560	700	V
Maximum DC Blocking Voltage	V <sub>DC</sub>	50	100	200	400	600	800	1000	V
Maximum Average Forward Rectified Current @ T <sub>c</sub> = 108°C (With Heat Sink)	I <sub>O (AV)</sub>	4							A
@ T <sub>a</sub> = 25°C (Without Heat Sink)		2.3							
Peak Forward Surge Current 8.3ms single Half Sine-Wave Superimposed on Rated Load (JEDEC Method) Non-Repetitive	I <sub>FSM</sub>	120							A
I <sup>2</sup> t for fusing (t < 8.3ms), non-repetitive	I <sup>2</sup> t	60							A <sup>2</sup> S
Maximum Instantaneous Forward Voltage @ 2.0A	V <sub>F</sub>	1.05							V
Maximum DC Reverse Current at rated DC Blocking Voltage Per Element	I <sub>R</sub>	10							μA
Typical Thermal Resistance (Note)	R <sub>θJA</sub>	30							°C / W
	R <sub>θJC</sub>	5.5							
Operating Temperature Range	T <sub>J</sub>	-55 ~ +150							°C
Storage Temperature Range	T <sub>STG</sub>	-55 ~ +150							°C

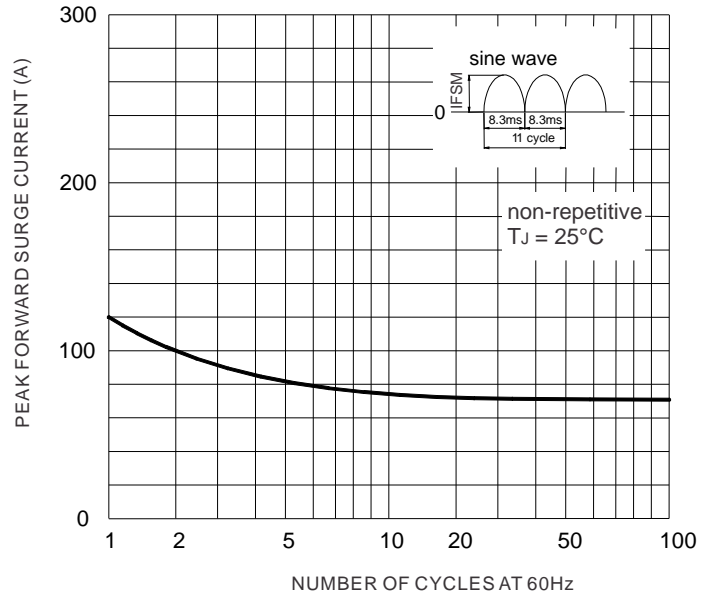
Note : R<sub>θJA</sub> =Between Junction and Ambient , without heatsink  
R<sub>θJC</sub> =Between Junction and Case, with heatsink

**RATING & CHARACTERISTIC CURVES**

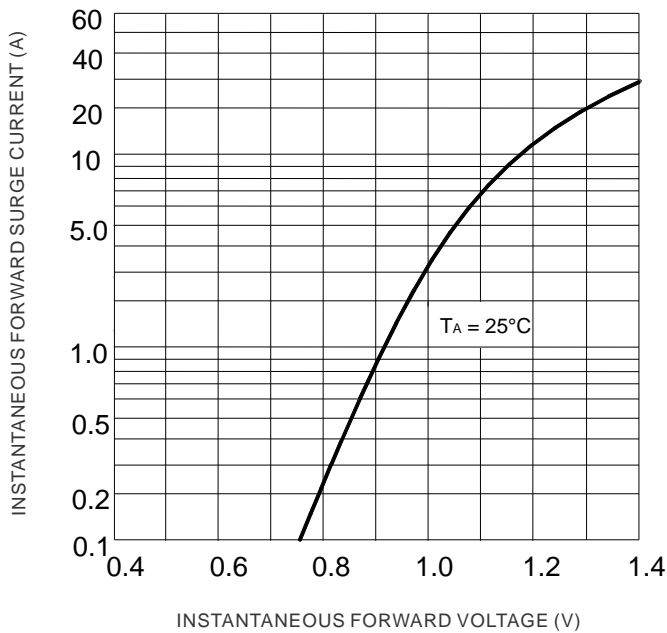
**FIG.1- MAXIMUM FORWARD CURRENT DERATING CURVE**



**FIG.2- MAXIMUM NON-REPETITIVE FORWARD SURGE CURRENT**



**FIG.3-TYPICAL INSTANTANEOUS FORWARD CHARACTERISTICS**



**FIG.4-TYPICAL REVERSE CHARACTERISTICS**

