

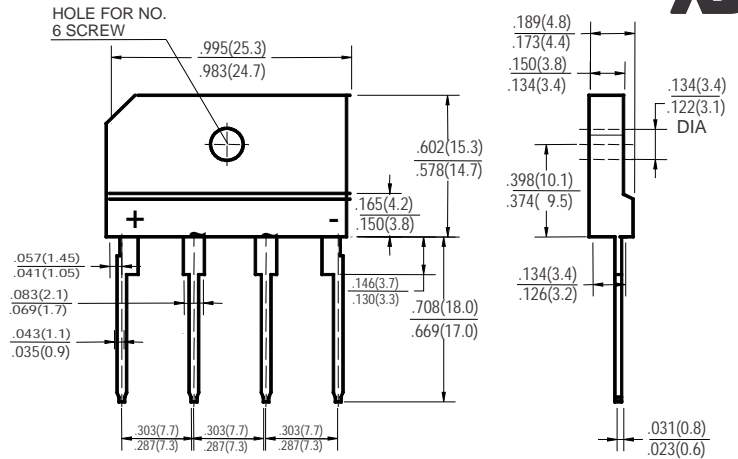


**FEATURES**

- UL Recognized
- Current 6 Amps
- Voltage Range 50V ~ 1000V
- Glass passivated chip junction
- High surge forward current capability
- KBJ available in 6A, 8A, 10A, 15A, 20A, 25A, 35A and 50A

**MECHANICAL DATA**

- Molded plastic body (UL 94V-0 rated)
- Mounting through hole for No. 6 screw
- Mounting Torque: recommend 5Kg • cm
- Polarity: As marked
- Lead: solder plated



**KBJ**  
Dimensions in inches and (millimeters)

**MAXIMUM RATINGS & ELECTRICAL CHARACTERISTICS**

Rating at 25°C ambient temperature unless otherwise specified.  
Single phase, half wave, 60Hz, resistive or inductive load  
For capacitive load, derate current by 20%

Parameter	Symbol	KBJ 6005	KBJ 601	KBJ 602	KBJ 604	KBJ 606	KBJ 608	KBJ 610	Unit
Maximum Repetitive Peak Reverse Voltage	V <sub>RRM</sub>	50	100	200	400	600	800	1000	V
Maximum RMS Voltage	V <sub>RMS</sub>	35	70	140	280	420	560	700	V
Maximum DC Blocking Voltage	V <sub>DC</sub>	50	100	200	400	600	800	1000	V
Maximum Average Forward Rectified Current @ T <sub>c</sub> = 110 °C (With Heat Sink)	I <sub>O</sub> (AV)	6							A
@ T <sub>a</sub> = 25°C (Without Heat Sink)		2.8							
Peak Forward Surge Current 8.3ms single Half Sine-Wave Superimposed on Rated Load (JEDEC Method)	I <sub>FSM</sub>	135							A
I <sup>2</sup> t for fusing (t < 8.3ms), non-repetitive	I <sup>2</sup> t	75							A <sup>2</sup> S
Maximum Instantaneous Forward Voltage @ 3.0A	V <sub>F</sub>	1.05							V
Maximum DC Reverse Current at rated DC Blocking Voltage Per Element	I <sub>R</sub>	10							μA
Typical Thermal Resistance (Note)	R <sub>ΘJA</sub>	26							°C / W
	R <sub>ΘJC</sub>	3.4							
Operating Temperature Range	T <sub>J</sub>	-55 ~ +150							°C
Storage Temperature Range	T <sub>STG</sub>	-55 ~ +150							°C

Note : R<sub>ΘJA</sub> =Between Junction and Ambient , without heatsink  
R<sub>ΘJC</sub> =Between Junction and Case, with heatsink

■ RATING & CHARACTERISTIC CURVES

FIG.1- MAXIMUM FORWARD CURRENT DERATING CURVE

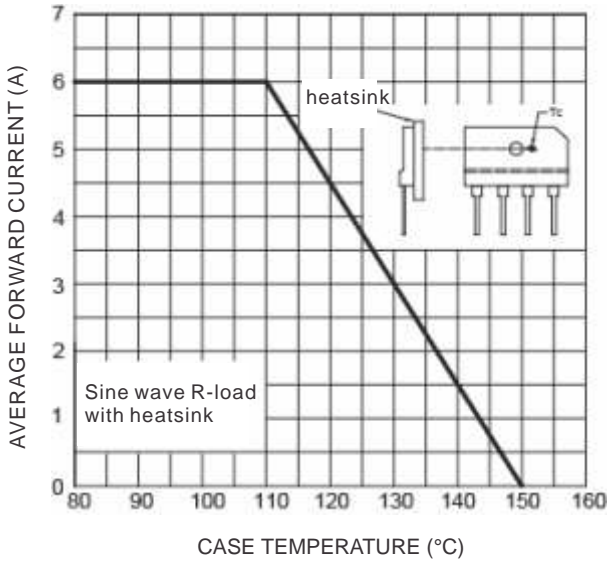


FIG.2- MAXIMUM NON-REPETITIVE FORWARD SURGE CURRENT

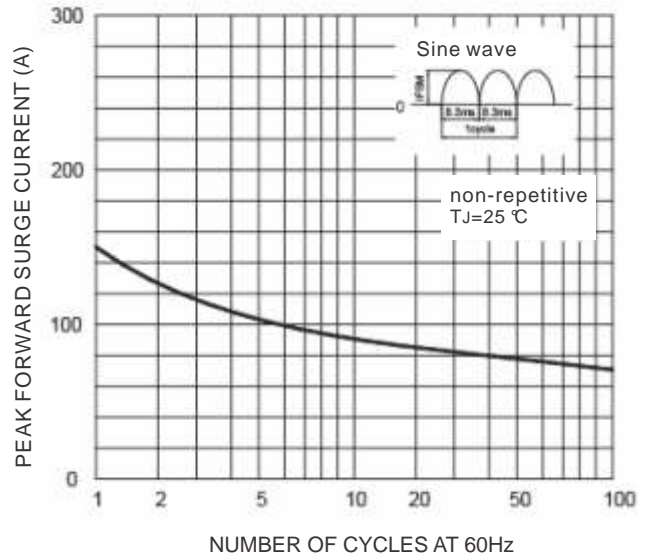


FIG.3-TYPICAL INSTANTANEOUS FORWARD CHARACTERISTICS

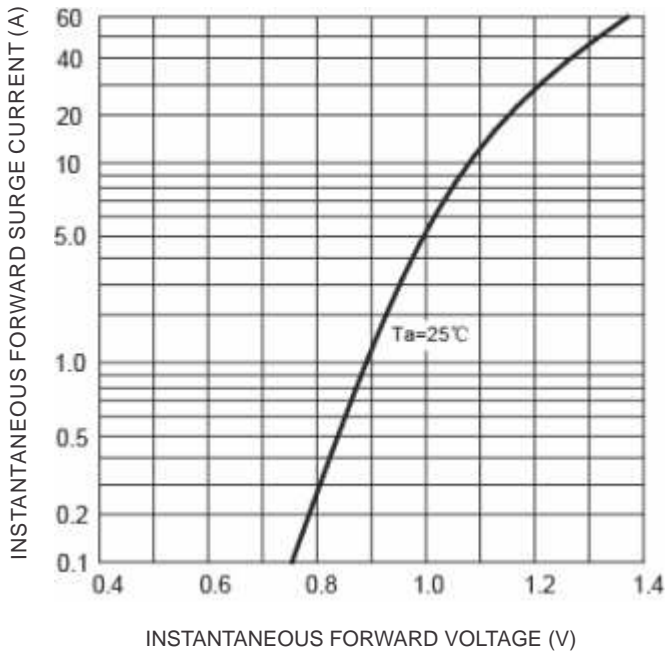


FIG.4-TYPICAL REVERSE CHARACTERISTICS

