



KBU25005 THRU KBU2510

**Single Phase 25 AMPS.
Glass Passivated Bridge Rectifiers**

**Voltage Range
50 to 1000 Volts
Current
25 Amperes**

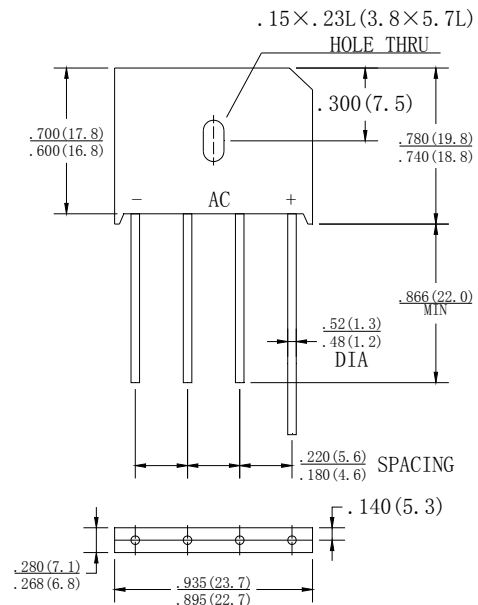
Features

- UL Recognized File # E-230084
- Ideal for printed circuit board
- Reliable low cost construction technique results in inexpensive product
- High temperature soldering guaranteed:
260°C / 10 seconds / 0.375" (9.5mm)
lead length at 5 lbs., (2.3 kg) tension

Mechanical Data

- Case: Molded plastic
- Lead: solder plated
- Polarity: As marked

KBU



Dimensions in inches and (millimeters)

MAXIMUM RATINGS AND ELECTRICAL CHARACTERISTICS

Rating at 25°C ambient temperature unless otherwise specified.

Single phase, half wave, 60 Hz, resistive or inductive load.

For capacitive load, derate current by 20%

www.DataSheet4U.com Type Number		KBU 25005	KBU 2501	KBU 2502	KBU 2504	KBU 2506	KBU 2508	KBU 2510	UNITS
Maximum Repetitive Peak Reverse Voltage	V _{RRM}	50	100	200	400	600	800	1000	V
Maximum RMS Voltage	V _{RMS}	35	70	140	280	420	560	700	V
Maximum DC blocking Voltage	V _{DC}	50	100	200	400	600	800	1000	V
Maximum Average Forward Rectified Current @T _c = 100°C	I(AV)	25.0							A
Peak Forward Surge Current, 8.3 ms Single Half Sine-wave Superimposed on Rated Load (JEDEC method)	I _{FSM}	400							A
Maximum Instantaneous Forward Voltage @12.5A	V _F	1.1							V
Maximum DC Reverse Current @ TA=25°C rated DC blocking voltage per leg TA = 125°C	I _R	10 500							μA
Typical Thermal Resistance (Note)	R θ _{JC}	0.8							°C/W
Operating Temperature Range	T _J	-55 to +125							°C
Storage Temperature Range	T _{STG}	-55 to +125							°C

NOTE: Device Mounted on 100×100×1.6mm Cu Plate Heatsink.

RATING AND CHARACTERISTIC CURVES KBU25005 THRU KBU2510



FIG.1-MAXIMUM NONO-REPETITIVE FORWARD SURGE CURRENT PER BRIDGE ELEMMENT

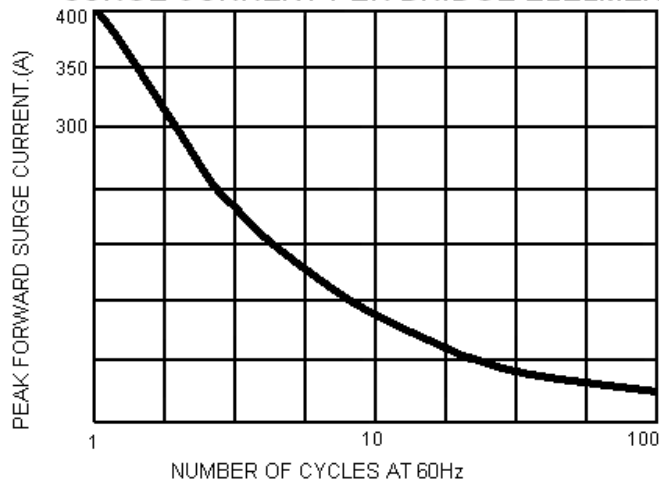


FIG.2-MAXIMUM FORWARD CURRENT DERATING CURVE

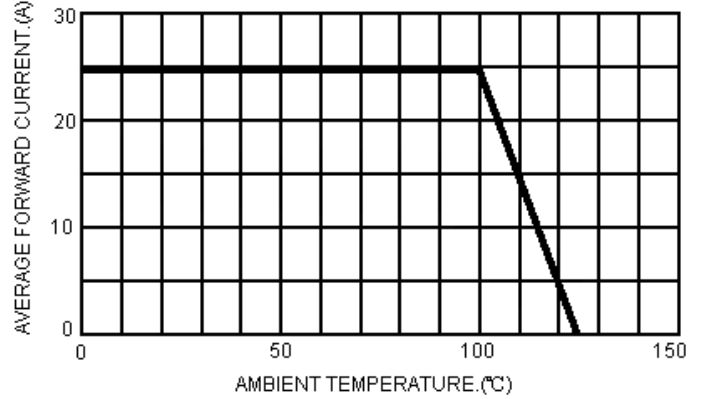


FIG.3-TYPICAL INSTANTANEOUS FORWARD CHARACTERISTICS PER BRIDGE ELEMENT

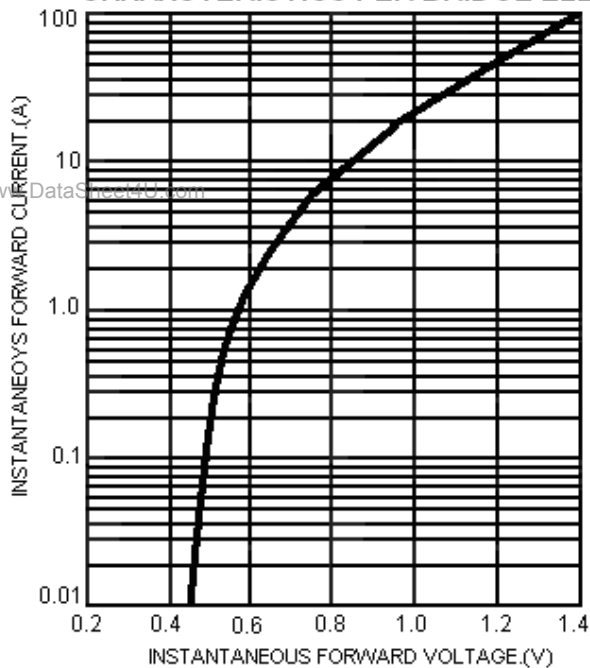


FIG.4-TYPICAL REVERSE CHARACTERISTICS PER BRIDGE ELEMENT

