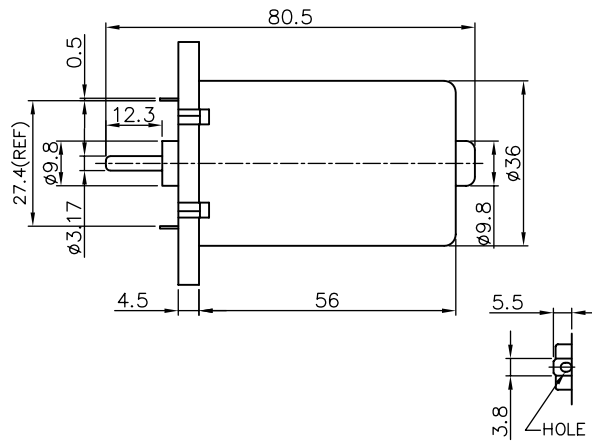
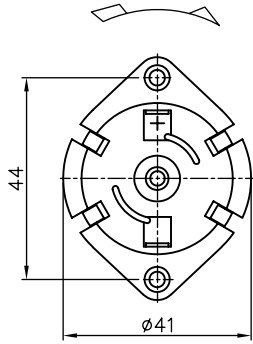


K_5A series Ø41 mm 8.9 W



Model - -
 Carbon brush = C V = Varistor
 Metal brush = M C = Capacitor

MOTOR DATA

Part name	KD5A-3058-CVC		
Diameter (mm)	41		
Length (mm)	56		
Nominal voltage (V)	12		
Nominal speed (rpm)	4800		
Nominal torque (mNm)	17.5		
Nominal current A	1.2		
No load speed (rpm)	5800		
No load current A	0.25		
Stall torque (mNm)	98.0		
Starting current (A)	5.3		
Output (W)	8.9		
Efficiency (%)	64		
Operating temperature deg. C	-10..+60		