

FM RADIO BAND TUNING APPLICATION.

#### FEATURES

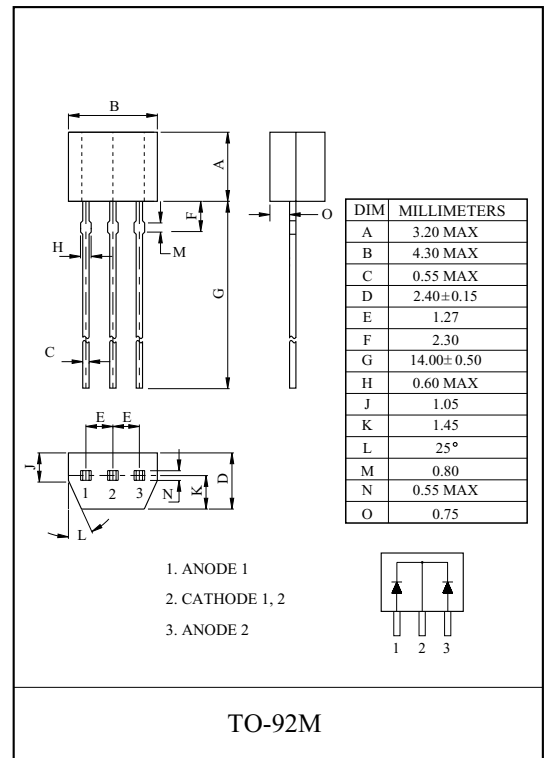
- Low  $r_S$  :  $r_S=0.3$  (Typ.).
- Small Package.

#### MAXIMUM RATINGS (Ta=25 °C)

CHARACTERISTIC	SYMBOL	RATING	UNIT
Reverse Voltage	$V_R$	15	V
Junction Temperature	$T_j$	150	
Storage Temperature Range	$T_{stg}$	-55 150	

#### CLASSIFICATION OF CAPACITANCE GRADE

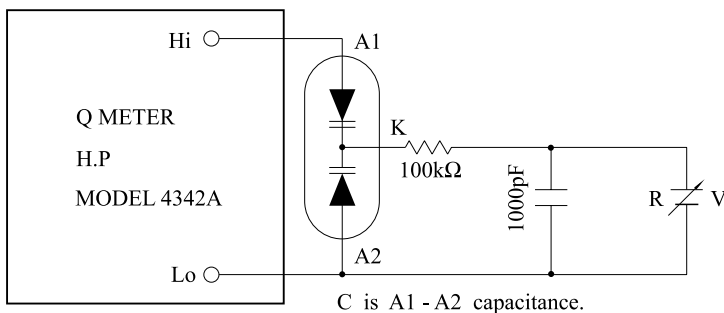
GRADE	CAPACITANCE ( $C_{2V}$ )	UNIT
A	34.0 35.5	pF
B	35.0 36.5	
C	36.0 37.5	
D	37.0 38.5	
E	38.0 39.5	



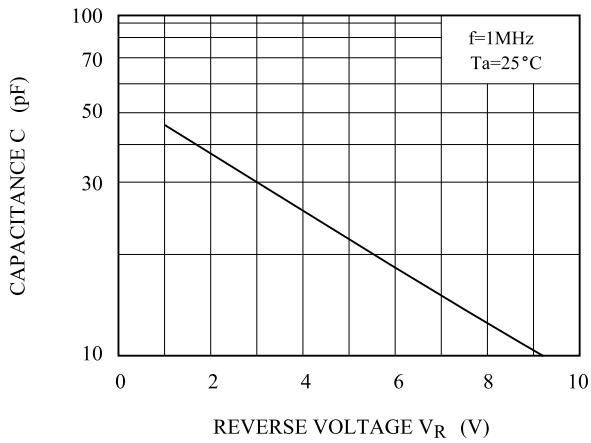
#### ELECTRICAL CHARACTERISTICS (Ta=25 °C)

CHARACTERISTIC	SYMBOL	TEST CONDITION	MIN.	TYP.	MAX.	UNIT
Reverse Voltage	$V_R$	$I_R=10 \mu A$	15	-	-	V
Reverse Current	$I_R$	$V_R=15V$	-	-	50	nA
Capacitance	$C_{2V}$	$V_R=2V, f=1MHz$	34.0	-	39.5	pF
	$C_{8V}$	$V_R=8V, f=1MHz$	11.7	-	13.7	
Capacitance Ratio	$C_{2V}/C_{8V}$		2.7	2.95	3.2	
Series Resistance	$r_S$	$C=30pF, f=50MHz$	-	0.3	0.5	

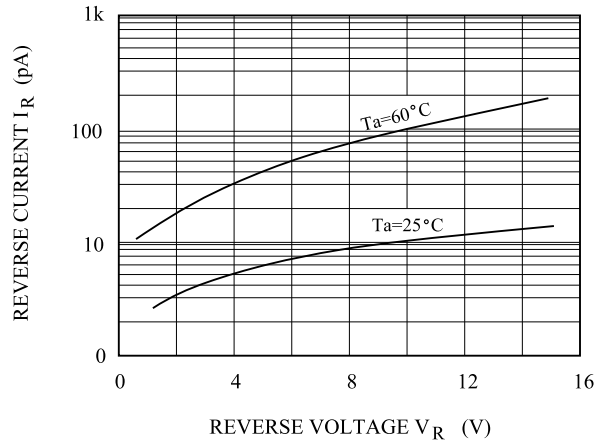
Note :  $r_S$  test circuit



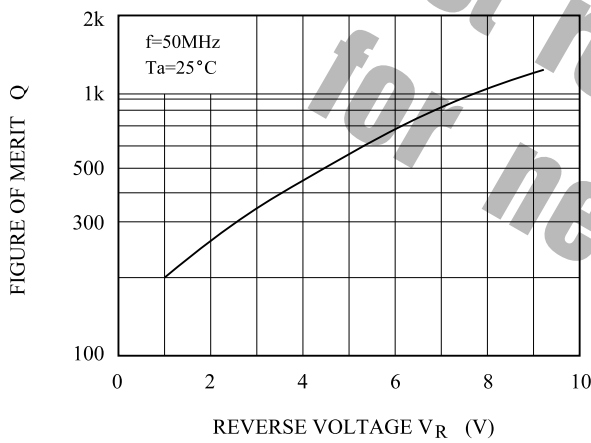
C - V<sub>R</sub>



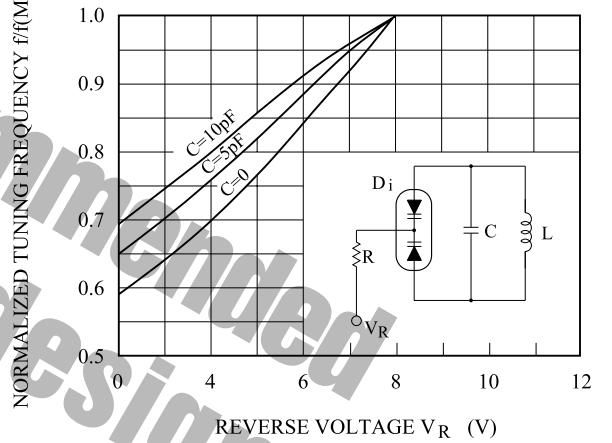
I<sub>R</sub> - V<sub>R</sub>



Q - V<sub>R</sub>



f/f<sub>MAX</sub> - V<sub>R</sub>



C(Temp.)/C(25°C) - Ta

