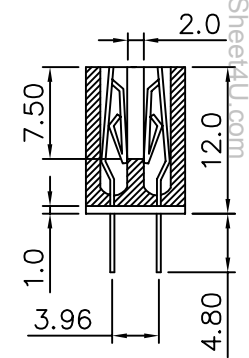
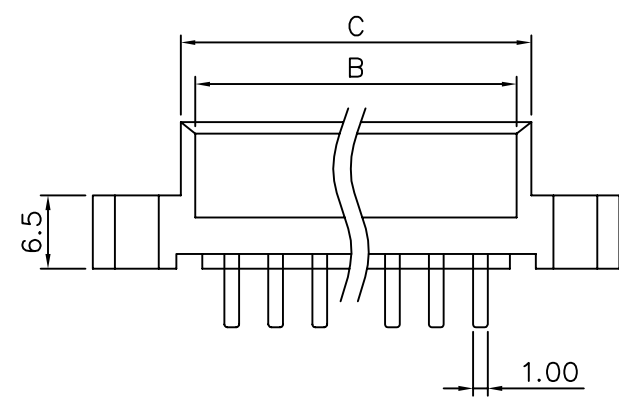
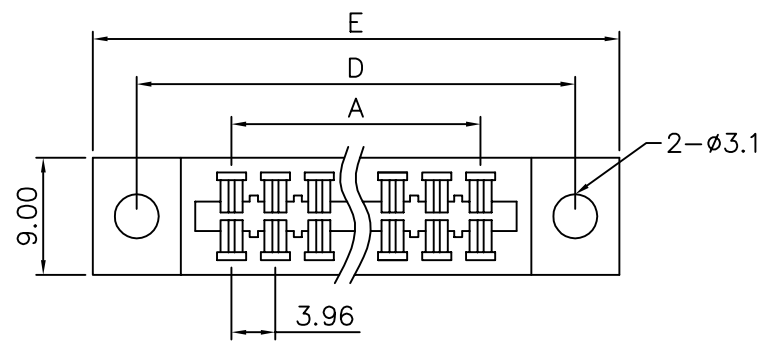


SPECIFICATIONS

Current Rating : 3A 1600V AC
 Contact Resistance : 10 Milliohms Max.
 Insulation Resistance : 1000 Megohms 500V DC/1 Minute
 Operation Temperature : -55°C To +120°C
 Operation Relative : Humidity 5 To 95% R.H.
 Housing : Glass Fiber UL 94V-0 Reinforce Polyester
 Contact : Phosphor Bronze Or Brass



Contacts	A	B	C	D	E
10	15.84	24.06	27.40	34.94	41.20
12	19.80	28.02	31.36	38.90	45.16
16	27.72	35.94	39.28	46.82	53.08
20	35.64	43.86	47.20	54.74	61.00
24	43.56	51.78	55.12	62.66	68.92
30	55.44	63.66	67.00	74.54	80.80
36	67.32	75.54	78.88	86.42	92.68
40	75.24	83.46	86.80	94.34	100.60
44	83.16	91.38	94.72	102.26	108.52
48	91.08	99.30	102.26	110.18	116.44
56	106.92	115.14	118.48	126.02	132.28
60	114.84	123.06	126.40	133.94	140.20
72	138.60	146.82	150.16	157.77	163.96
86	166.32	174.54	177.88	185.49	191.48



DRAWING No. KED24

APPROVED BY MEI
 CHECKED BY RAN
 DRAWING BY HZF

UNLESS OTHERWISE SPECIFIED TOLERANCES ARE
 .X ±0.38
 .XX ±0.25
 ANG.

SCALE NONE

REV. A

UNIT mm

AREA REVISIONS CHK DATE