

Thick film thermal printhead

KF3008-GR16A

KF3008-GR16A is a thick film thermal head developed for A4 size printer for use with Kiosk & ATM terminals.

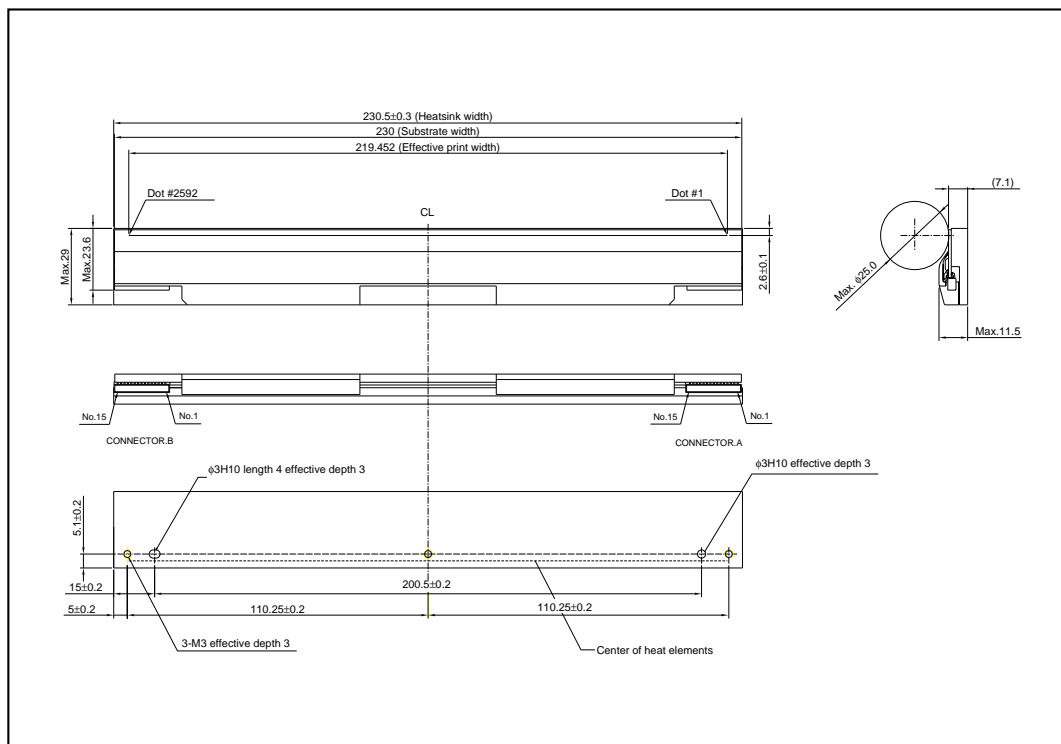
●Applications

Kiosk and ATM printers, Ticket printer, portable printer and various type of measurement instruments printers.

●Features

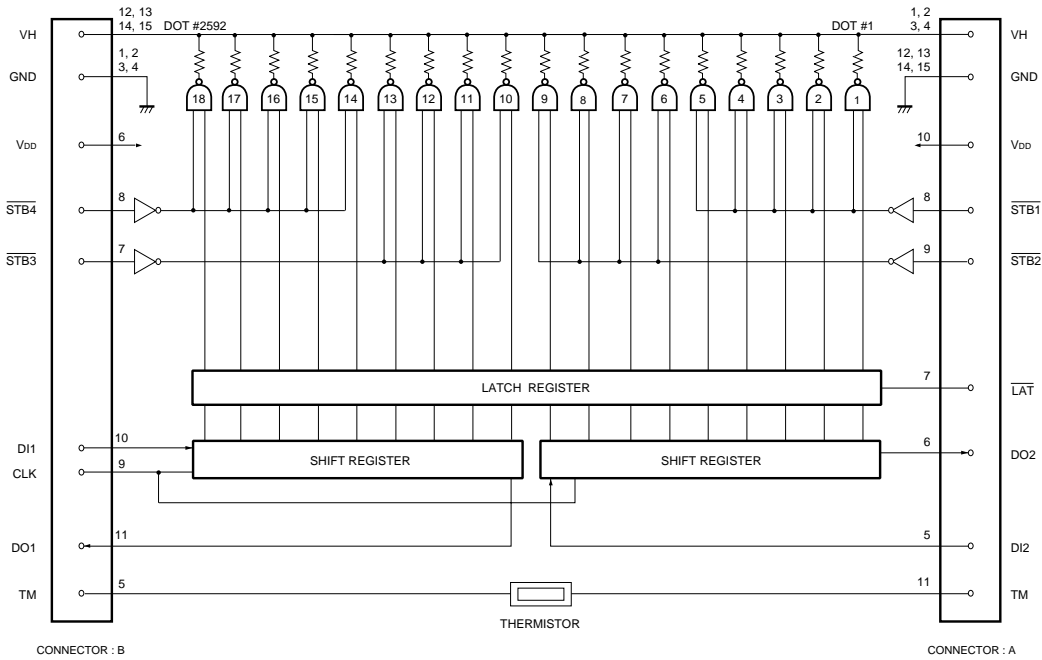
- 1) A new pin connector structure greatly reduces the size and weight.
- 2) Print material's feeding stability increased thanks to the cover when printing.
- 3) Good printing easily attained thanks to big platen (Max. $\phi 25\text{mm}$) compliance.
- 4) Thick film type with glazed components provides good printing quality even on rough paper.

●External dimensions (Units : mm)



Printheads

●Equivalent circuit



STB	DOT No.	dots / STB
1	1~720	720
2	721~1296	576
3	1297~1872	576
4	1873~2592	720

DI No.	DOT No.	dots / DI
1	2592~1297	1296
2	1296~1	1296

Fig. 1

Printheads

●Pin configuration

CONNECTOR A : IL-Z-15P-CLIP (JAE)

PIN No.	SIGNALS
1	V _H
2	V _H
3	V _H
4	V _H
5	DI2
6	DO2
7	$\overline{\text{LAT}}$
8	$\overline{\text{STB1}}$
9	$\overline{\text{STB2}}$
10	V _{DD}
11	TM
12	GND
13	GND
14	GND
15	GND

CONNECTOR B : IL-Z-15P-CLIP (JAE)

PIN No.	SIGNALS
1	GND
2	GND
3	GND
4	GND
5	TM
6	V _{DD}
7	$\overline{\text{STB3}}$
8	$\overline{\text{STB4}}$
9	CLK
10	DI1
11	DO1
12	V _H
13	V _H
14	V _H
15	V _H

●Characteristics

Parameter	Symbol	Typ.	Unit
Dot pitch	–	0.0847	mm
Pulse width	T _{on}	0.39	ms
Pulse cycle	SLT	1.11	ms
Applied power	P _o	0.26	W / dot
Applied voltage	V _H	24.0	V
Maximum clock frequency	–	4	MHz
Maximum roller diameter	–	25.0	mm
Life	–	50 / 5×10 ⁷	km / pulses
Maximum number of dots energized simultaneously	–	720	dots
Operating temperature	–	5–45	°C
Effective printing width	–	219.5424	mm
Number of heat element	–	2592	dots
Resistance value of heat element	R _{ave}	1500	Ω

Printheads

● Electrical characteristic curves

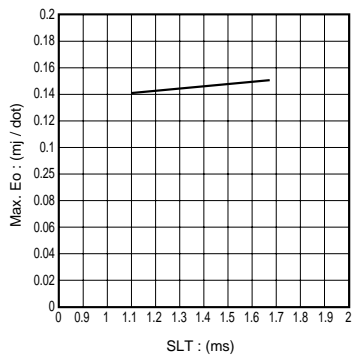


Fig.2 Maximum print energy

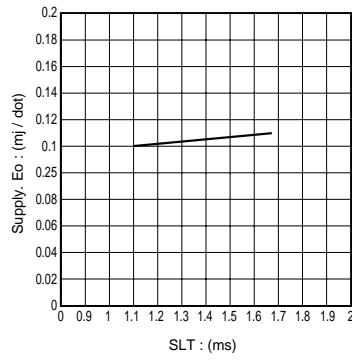


Fig.3 Density characteristic