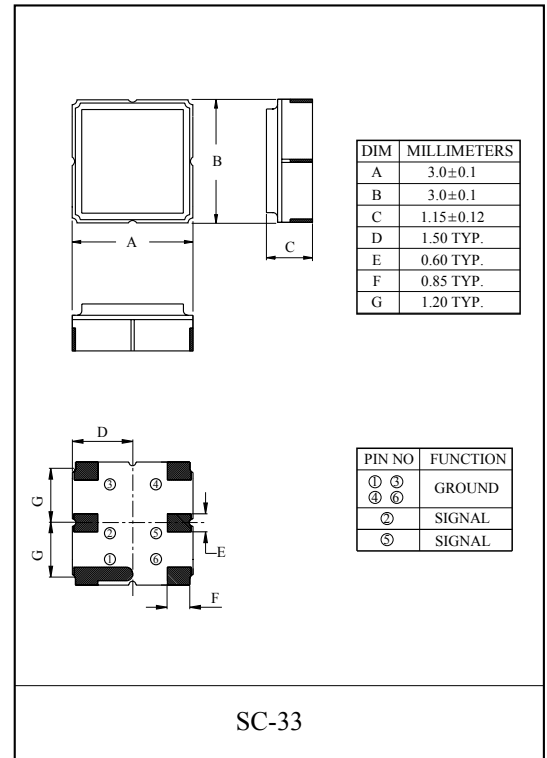


Band pass filters for TX of AMPS/TDMA/CDMA.

- High stability and reliability with good performance and no adjustment.
- Wide and sharp pass band characteristics.
- Low insertion loss and deep stop band attenuation for interference.

MAXIMUM RATINGS

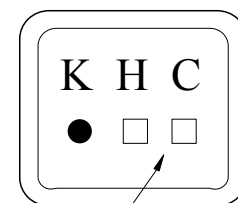
| ITEM | SYMBOL | RATING | UNIT |
|-----------------------------|------------|-----------|------|
| Input Signal Level | IS_{max} | +10 | dBm |
| DC Permissive Voltage | V_{DC} | 5 | V |
| Operating Temperature Range | T_{opr} | -30 ~ +85 | °C |
| Storage Temperature Range | T_{stg} | -40 ~ +85 | °C |



ELECTRICAL CHARACTERISTICS (Ta=-30 to 85 °C)

| ITEMS | SYMBOL | TEST CONDITION | MIN. | TYP.(25 °C) | MAX. | UNIT |
|-----------------------------|-------------|-------------------|----------------|-------------|------|------|
| Nominal Center Frequency | f_0 | - | - | 836.5 | - | MHz |
| Bandwidth | BW_{3dB} | - | $f_0 \pm 12.5$ | - | - | MHz |
| Insertion Loss | IL_{PASS} | $f_0 \pm 12.5MHz$ | - | 2.8 | 3.5 | dB |
| Ripple Level | A_{RIP} | $f_0 \pm 12.5MHz$ | - | 0.8 | 1.6 | dB |
| Rejection Level | IL_{STOP} | DC ~ 800MHz | 43 | 48 | - | dB |
| | | 869 ~ 1049MHz | 28 | 33 | - | |
| | | 1049 ~ 1200MHz | 50 | 65 | - | |
| | | 1200 ~ 2000MHz | 30 | 35 | - | |
| Voltage Standing Wave Ratio | VSWR | $f_0 \pm 12.5MHz$ | - | 1.5 | 2.0 | - |
| Input/Output Impedance | $Z_1(Z_0)$ | - | - | 50Ω | - | - |

MARKING

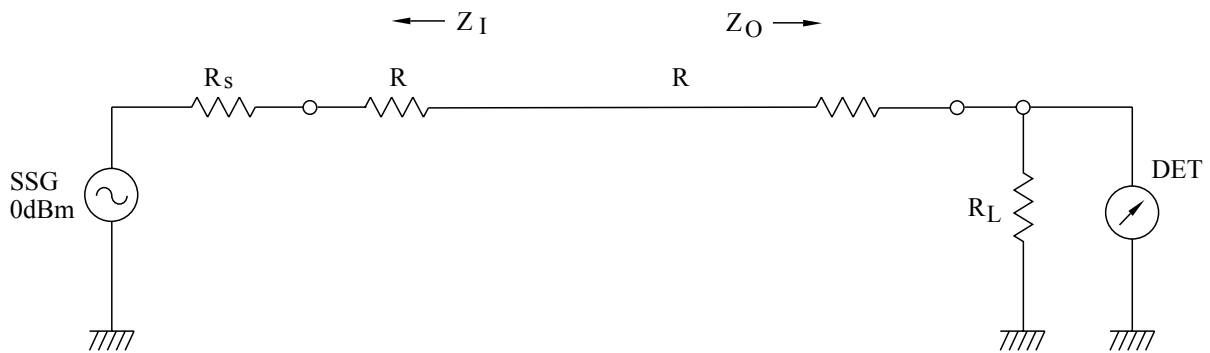


Lot No. _____

KF836U

TEST CIRCUIT

REFERENCE LEVEL TEST CIRCUIT

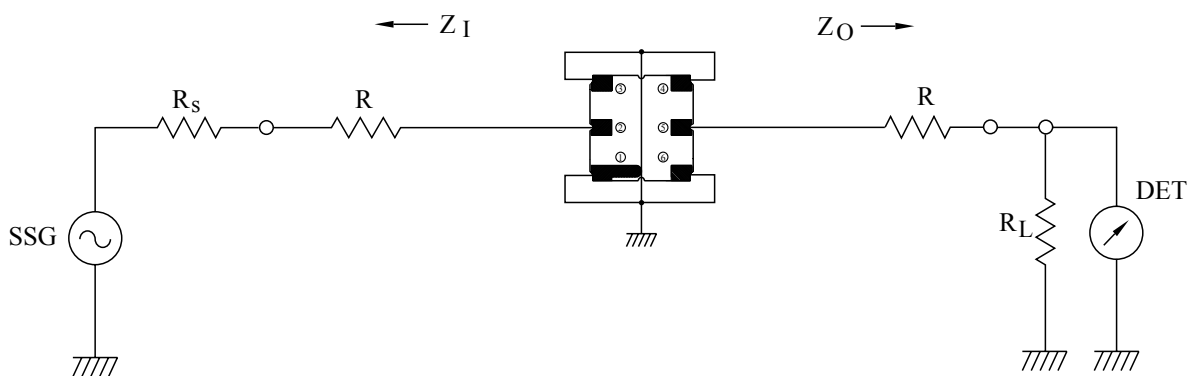


$R_s, R_L : 50\Omega$ (Internal Impedance of Source and Load)

$R : 0\Omega$

$$Z_I(Z_O) = R_s(R_L) + R$$

MEASUREMENT CIRCUIT



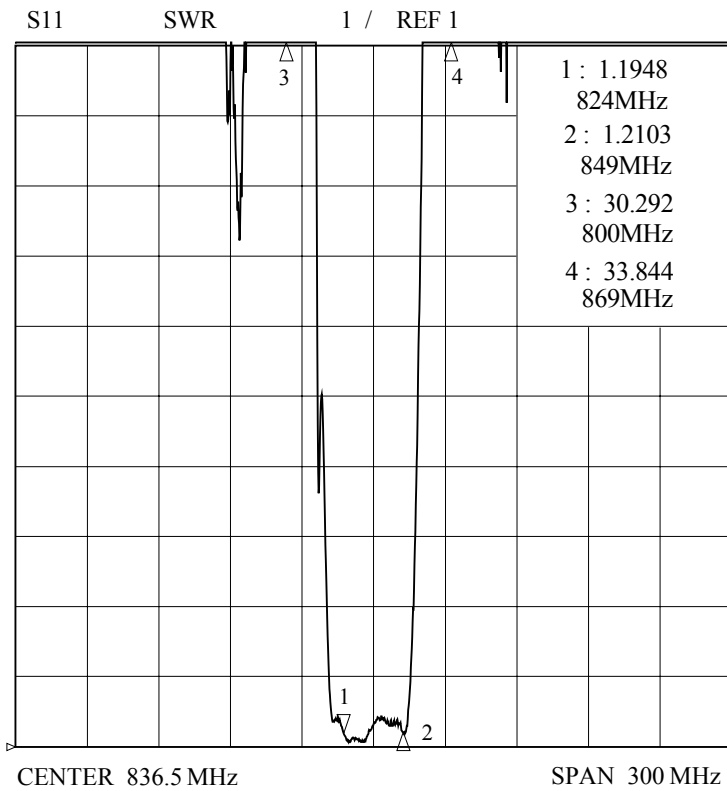
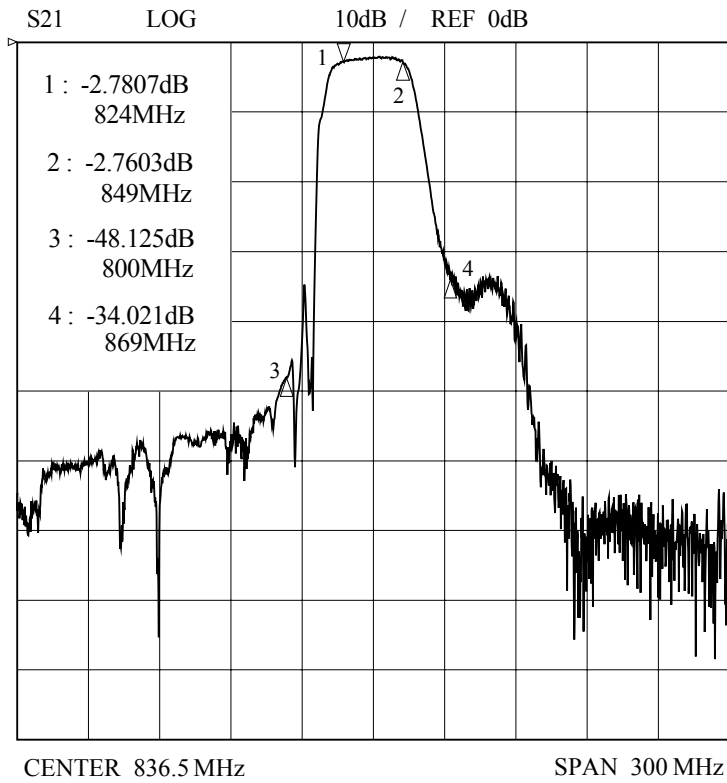
② : INPUT ①, ③, ④, ⑥ : GROUND ⑤ : OUTPUT

$R_s, R_L : 50\Omega$ (Internal Impedance of Source and Load)

$R : 0\Omega$

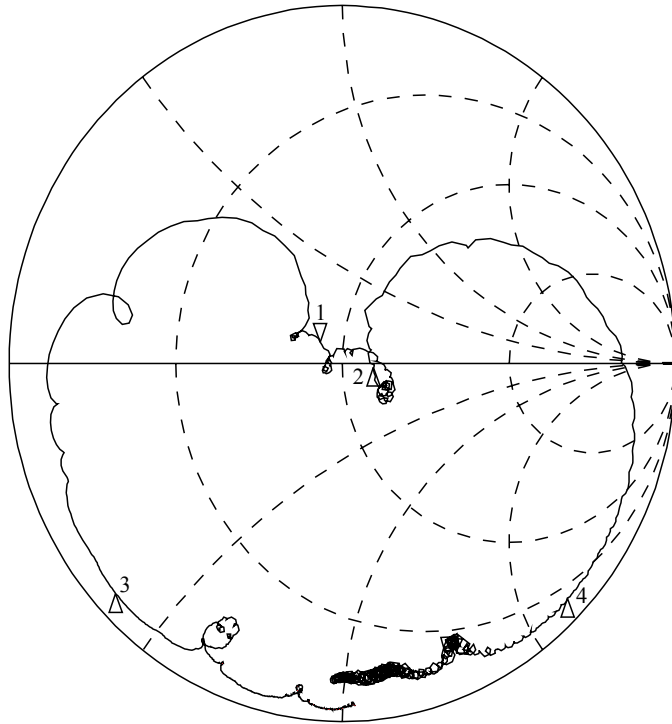
$$Z_I(Z_O) = R_s(R_L) + R$$

KF836U



KF836U

S11 1UFS

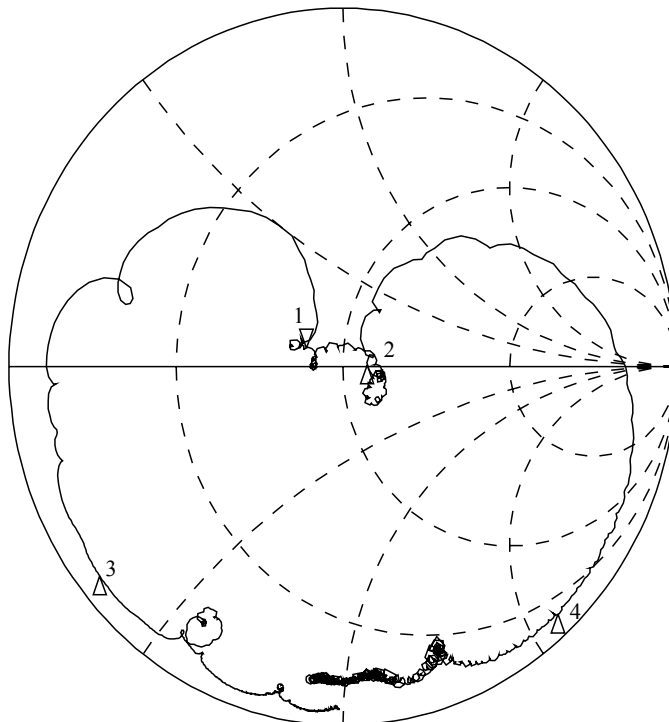


- 1 : 43.492 Ω
5.1719 Ω
998.94pH
824MHz
- 2 : 60.432 Ω
-1.2383 Ω
849MHz
- 3 : 1.9111 Ω
-19.857 Ω
800MHz
- 4 : 10.387 Ω
-122.47 Ω
869MHz

CENTER 836.5 MHz

SPAN 300 MHz

S22 1UFS



- 1 : 39.992 Ω
4.3008 Ω
830.69pH
824MHz
- 2 : 57.895 Ω
0.5918 Ω
849MHz
- 3 : 1.9268 Ω
-17.527 Ω
800MHz
- 4 : 8.9648 Ω
-114.52 Ω
869MHz

CENTER 836.5 MHz

SPAN 300 MHz

KF836U

