



Henkwell

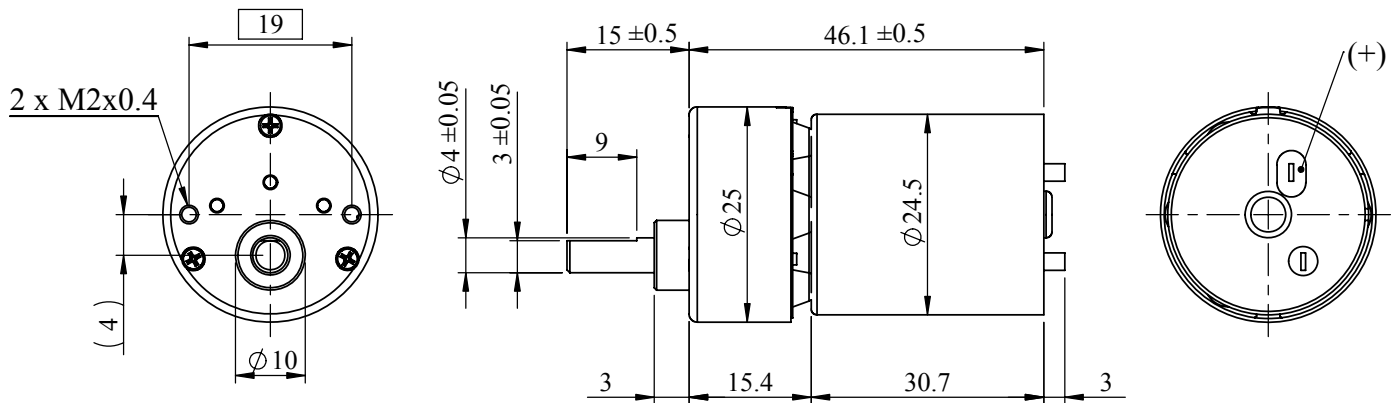
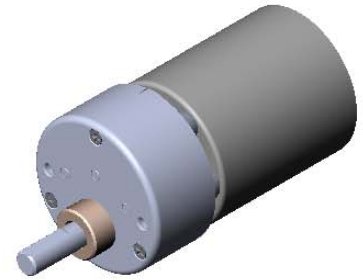
SPECIFICATIONS

DC Spur Gear Brush Motor

MODEL NUMBER

KG2102JB-0138S

DIRECTION OF ROTATION



(unit:mm)

A. Operating Conditions:

1	Operating Voltage Range	9~15	VDC	4	Operating Temperature	-10~+60	°C
2	Rated Voltage	12	VDC	5	Storage Temperature	-30~+85	°C
3	Rated Load	0.4	kgf-cm	6	Test Position	Horizontal	~

B. Electrical Characteristics:

1	Max. No-load Current	0.22	A	6	Max. Stall Current	2.5	A
2	No-load Speed	740 ± 74	rpm	7	Insulation Resist.(500V)	20	MΩ
3	Rated-load Current	0.52	A	8	Dielectric Strength	250	VAC
4	Rated-load Speed	606 ± 60	rpm	9	Motor Brush Type	Carbon Brush	~
5	Min. Stall Torque	1.6	kgf-cm	10	Output Power at Max.Eff.	2.50	W

C. Mechanical Characteristics:

1	Gear Type	Spur	~	7	Max. Shaft Radial Load	3.0	kgf
2	Gear Ratio	5/69	~	8	Max. Shaft Runout	0.05	mm
3	Gear Material	Mixed	~	9	Max. Shaft End Play	0.3	mm
4	Rated Tolerance Torque	1	kgf-cm	10	Bearing Type	Sleeve	~
5	Moment. Tolerance Torque	3	kgf-cm	11	Net Weight	76 ± 8	grams
6	Max. Shaft Axial Load	2.5	kgf	12	Extra Parts		