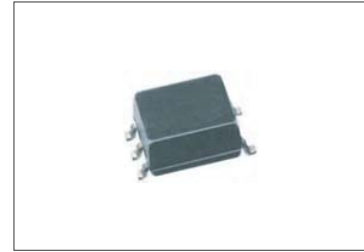


Wide Band RF Eliminate Filter KHLC-06d



Feature

- SMT Package in Thin Thickness
- Broad Bandwidth: 100 kHz to 8.0 GHz (-20 dB)
- Comply with Large Current (1.75 A)

KHLC-06d is a RF preventive filter with small size in SMT package as similar to KHLC-04d performs in a super broadband width of 100 kHz to 8 GHz (-20 dB).

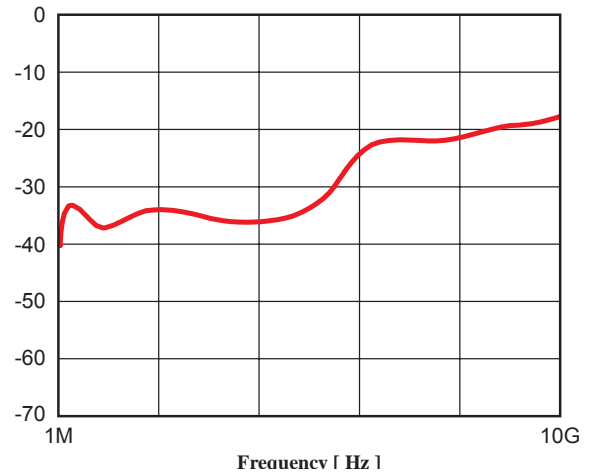
In the appearance of 5 GHz wireless LAN which represents with IEEE 802.11a, the frequency applied to the commercial electronics is getting to be higher. It is impossible to use a conventional method by bypass capacitor or ferrite beads in order to prevent noise element like clock noise to wireless signal in the broadband at the PC side.

In performing data transmission of rapid speed and high quality as well as controlling the errors, **KHLC-06d** should be put in series to the bias (power supply terminal) of the electric device (ICs and etc) and needs to cut high harmonic wave signal which is leaked in the power supply line.

It is possible to adopt the applications in the bias circuit for Combo wireless LAN compliant to IEEE 802.11a/b.

KHLC-06d is in SMT package which can be mounted near the electric power supply terminals and is made ideal mounting position electrically.

Isolation vs Frequency



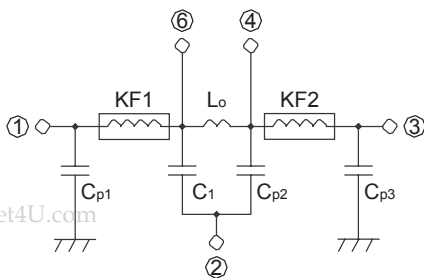
Absolute Maximum Rating

| Parameter | Value (max.) | Unit |
|-----------------------|---------------|------|
| Rated Current | 1,750 | mA |
| Rated Voltage | 25 | V |
| Soldering Temperature | +265 (10 sec) | C |
| Operating Temperature | -40 ~ +85 | C |
| Storage Temperature | -65 ~ +150 | C |

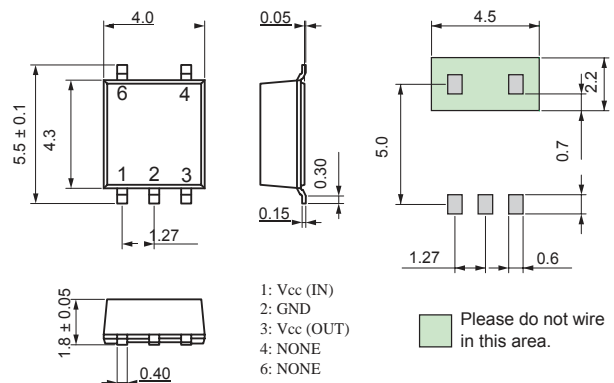
Electrical Specifications

| Parameter | Value | Condition |
|---------------|------------------------|-----------|
| Band Width | 100kHz ~ 8.0GHz (Typ.) | -20 dB |
| | 300kHz ~ 5.3GHz (Typ.) | -30 dB |
| DC Resistance | 0.1 Ω max. | - |

Schematics



Dimensions



Specifications of products are subject to change without notice.