

PIN Photodiode KHP2032

Description

The KHP2032 is a high-output, high-speed silicon Pin photodiode mounted in a side-viewing plastic package. This photodiode is both compact and easy to mount.



www.DataSheet4U.com

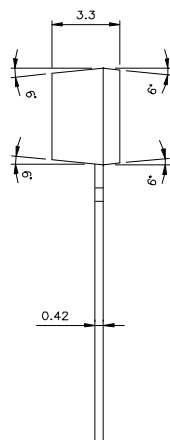
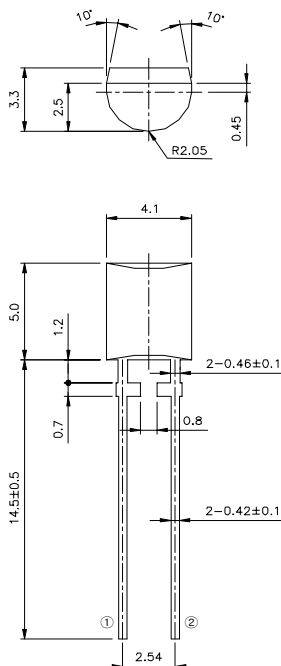
Features

- Sidelooking Plastic package
- High-Speed Response / High-Output Power
- RoHS Compliance
- Wide Angular Response

Application

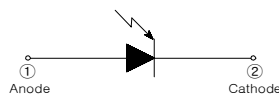
- Wireless Head set
- Auto Light Sensor
- Optical switches
- Optical detectors

Outline Dimensions



NOTE

1. GENERAL TOLERANCE : ± 0.2
2. PIN CONFIGURATION



▶ MAXIMUM RATINGS

Description	Symbol	Rating	Unit
Reverse Voltage	V_R	20	
Power Dissipation	PD	100	
Operating Temperature	T_{opr}	-25~+85	
Storage Temperature	T_{stg}	-30~+100	
Soldering temperature *1	T_{sol}	260	

Notes : *1. For MAX.5 seconds at the position of 2mm from the package

▶ ELECTRO- OPTICAL CHARACTERISTICS

[$T_a = 25^\circ\text{C}$]

Description	Symbol	Condition	Min.	Typ.	Max.	Unit
Short Circuit Current	I_{sc}	$E_V = 1000 I_X^2, V_R = 10V$	50	80	-	μA
Dark current	I_D	$V_R = 10V$	-	1	20	nA
Capacitance	C_t	$V_R = 10V, f = 1\text{MHz}$	-	11	-	pF
Spectral sensitivity	λ		430~1090			nm
Peak Wavelength	λ_p	$V_R = 0V$	-	900	-	nm
Half Angle - X	$\Delta\theta_X$	a lens long direction	-	130	-	deg.
Half Angle -Y	$\Delta\theta_Y$	a lens short direction	-	150	-	deg.
Rise time	tr	$V_R = 10V, R_L = k\Omega$	-	30	-	ns
Fall time	tf		-	30	-	ns

Notes : *2. Irradiance by CIE standard light source A (2850K tungsten lamp)