



# HOW TO REPLACE YOUR PS2 KHS-400C LASER

(FOR VERSIONS 5 - 11)



www.DataSheet4U.com

## Table of Contents

<u>Table of Contents</u>	<u>2</u>
<u>RECOMMENDED TOOLS</u>	<u>3</u>
<u>BEFORE YOU BEGIN</u>	<u>4</u>
<u>Disassemble Your PS2</u>	<u>5</u>
<u>Laser Installation</u>	<u>11</u>
<u>Adjusting Your Laser</u>	<u>17</u>

## **RECOMMENDED TOOLS:**



**#1 SLOTTED  
SCREWDRIVER**

**#1 PHILLIPS  
SCREWDRIVER**

**#2 PHILLIPS  
SCREWDRIVER**

- 1) #1 Phillips screwdriver (for tiny screws)
- 2) #2 Phillips screwdriver
- 3) #1 Slotted screwdriver (used for prying)
- 4) 15 Watt soldering iron ([Radio Shack Catalog #: 64-2051](#))
- 5) (Optional) a small jar (to hold removed screws)
- 6) (Optional) #6 Torx screwdriver

**NOTE: Having the right tool for the right job will make all the difference between a pleasant experience vs. a nightmare!!!**

## **BEFORE YOU BEGIN:**

Make sure you are grounded before you begin disassembling your PS2 either by a grounding strap ([Radio Shack Catalog #: 276-2370](#)) or by touching something metal. Make sure that you are working on a non-conductive surface (i.e. wood, glass...etc.). Before disassembling your PS2 console, you first need to break the factory Sony seal. You do this by using a #1 slotted screwdriver or knife as shown below in figure #1. **NOTE: ALL TEXT IN BLUE IN THIS DOCUMENT ARE URL LINKS FOR YOUR REVIEW!!!**



**FIGURE #1**

**NOTE: Once the Sony seal is broken, you void any warranties guaranteed by Sony!!!**

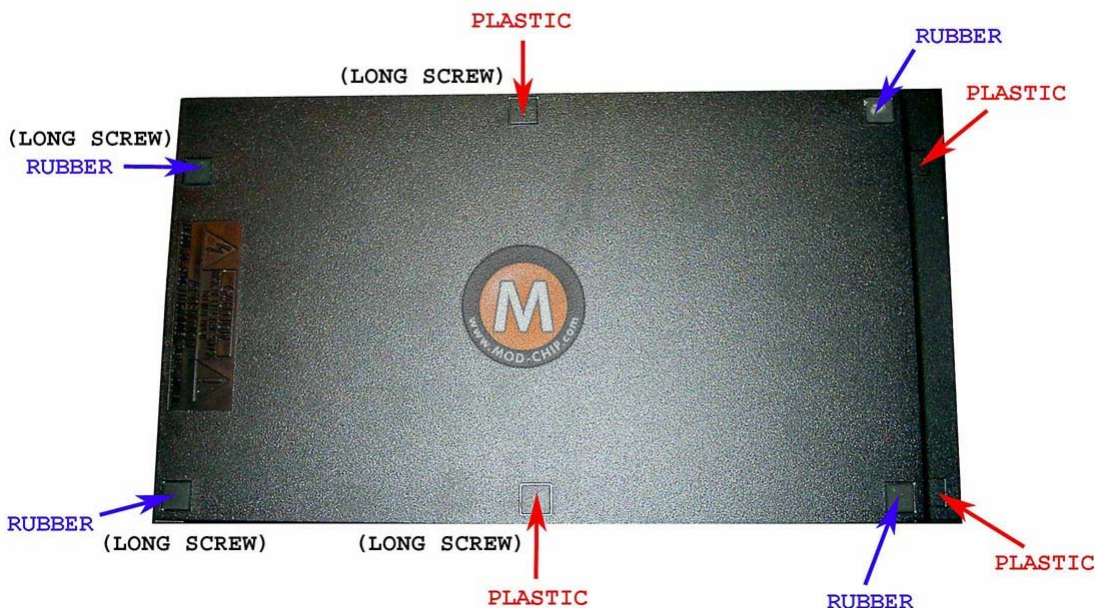
Turn over your PS2 console and gently pry each of the square covers with the #1 slotted screwdriver to reveal the screw heads below as shown in figure #2.



**FIGURE #2**

## DISASSEMBLE YOUR PS2:

Pay attention to which cover is rubber and which are made of plastic. Remove the screws and note that the longer screws belong in the left four openings as shown below in figure #3.



**FIGURE #3**

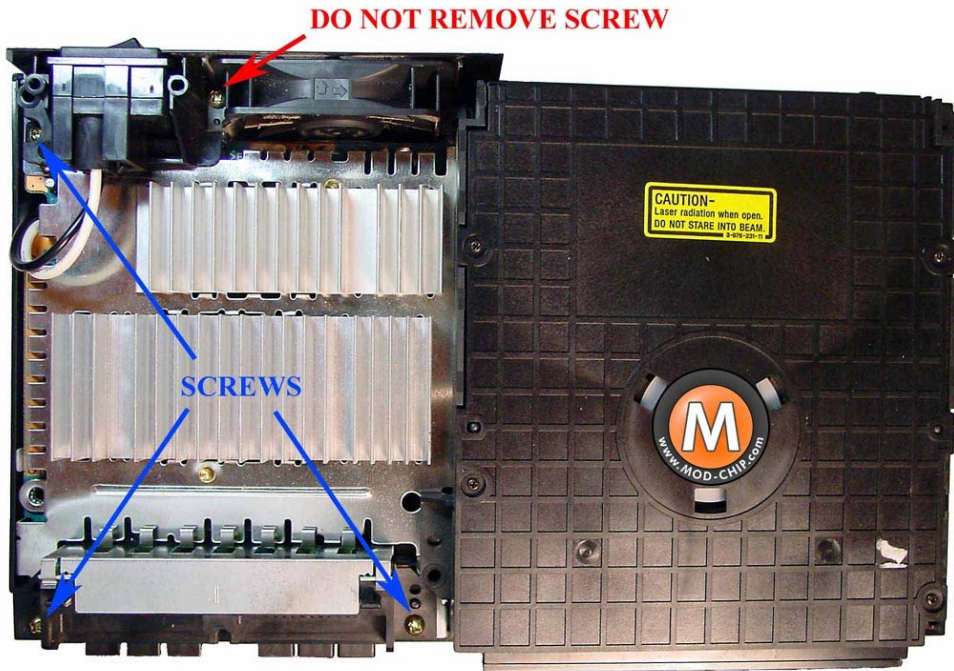
Turn over the PS2 console and remove the top cover by lifting on the back a little and gently pushing the top cover towards the front (to clear the DVD player) and then by lifting upwards (see figure #4 below)





**FIGURE #4**

Remove the screws as shown in figure #5.



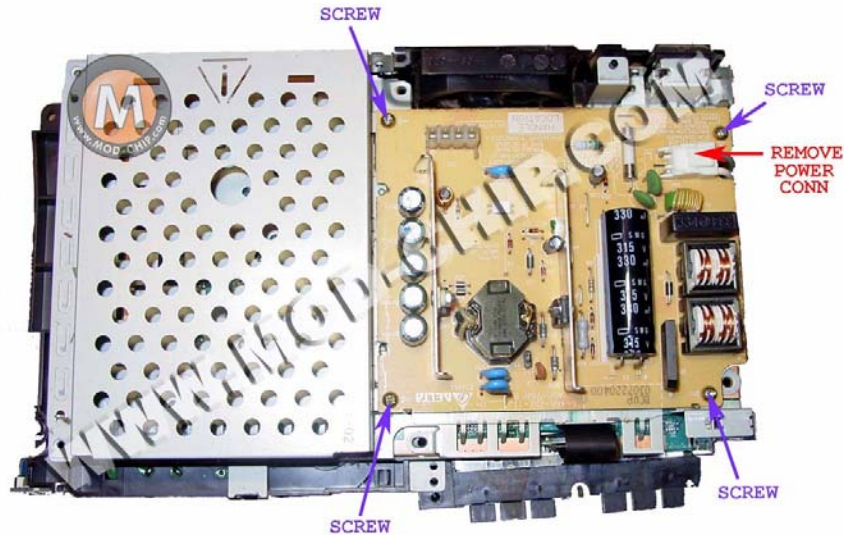
**FIGURE #3**

Gently lift the unit out of the bottom case (be sure to keep together the rear fan unit and watch the controller hub so that it does not twist or pull out of the motherboard) as shown below in figure #6.



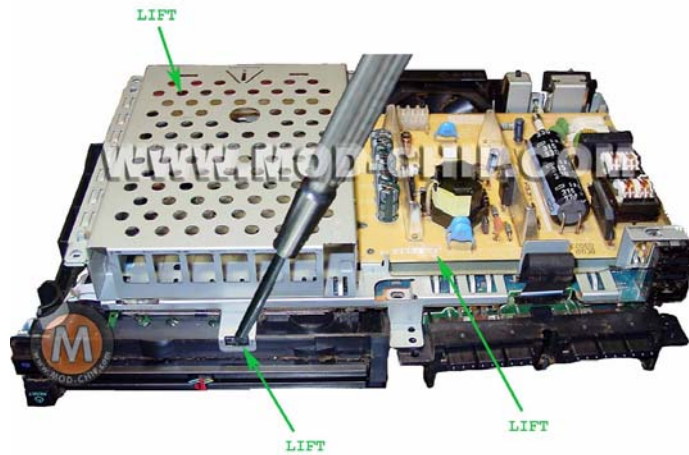
**FIGURE #6**

Remove the screws as shown below in figure #7. Gently lift the power supply board (on the right) straight upward and lift off the bay frame (on the left) off. Remove the plastic shield that was below the power supply board. Below the bay frame are metal locking tabs that attach the DVD drive to the PS2 motherboard. **NOTE: the power cord is very short on these models; you will want to reconnect the power cord to the power supply PCB AFTER the power adapter is in place (it is the item to the left of the “do not remove screw” in figure #5).**



**FIGURE #7**

Use the #1 slotted screwdriver to gently pry (out and then upward) the metal locking tab as shown below in figure #8. Now separate the DVD drive by pushing downward the drive a little in the front and then by pushing forward to clear the other locking tabs (located in the rear of the DVD drive).



**FIGURE #8**

**THIS IS JUST A  
SNAPSHOT OF THIS  
MANUAL, A FULL  
VERSION OF THIS  
MANUAL IS AVAILABLE  
TO MOD-CHIP.COM  
CUSTOMERS ONLY.**