

KMS Series

Microminiature Side Actuated Tact Switch for SMT

Features/Benefits

- **Compact size**
- **Excellent tactile feel**
- **Compatible with lead free soldering**
- **Grounded cover for EMC protection**
- **Date code marking**

Typical Applications

- **Mobile phones, pagers**
- **PDA's**
- **Medical handheld monitors**
- **Consumer electronics**
- **Telecommunication networks**



Specification

FUNCTION: Momentary
CONTACT ARRANGEMENT: SPST, N.O.
TERMINALS: Gullwing type for SMT
IP40 Sealed

Mechanical

MAXIMUM ACTUATING FORCE: 20 N (4.4lbs.) during 25,000 cycles.
ACTUATING FORCE: 2.5 N±25%
LIFE EXPECTANCY: 100,000 operations
TRAVEL TO MAKE: 0.3 mm±0.15 mm
TOTAL TRAVEL: 0.45 mm
SHEAR FORCE RESISTANCE: 50 N

Packaging

Switches are delivered in tape and reels of 3,000 pieces. The reel diameter is 330 (12.992). The tape dimensions conform to the EIA-RS-481 and EC-286-6 norms.

NOTE: Specifications listed above are for switches with standard options.
For information on specific and custom switches, consult Customer Service Center.

Electrical

	Silver	Gold
MAXIMUM POWER:	1 VA	0.2 VA
MAXIMUM VOLTAGE:	50 VDC	50 VDC
MAXIMUM CURRENT DC:	50 mA	10 mA
MINIMUM CURRENT DC:	1 mA	1 mA

DIELECTRIC STRENGTH: 250 VDC
LIFE EXPECTANCY: 100,000 operations
CONTACT RESISTANCE: ≤100 mΩ
INSULATION RESISTANCE: 10⁹Ω
BOUNCE TIME: ≤ 3 ms

Environmental

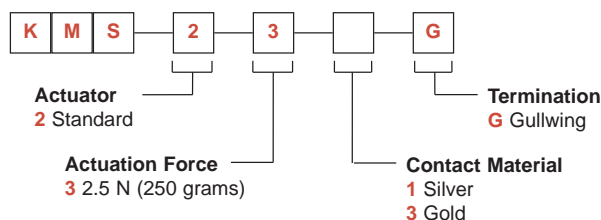
	Silver	Gold
OPERATING TEMPERATURE:	-40°C to 85°C	-40°C to 125°C
STORAGE TEMPERATURE:	-55°C to 85°C	-55°C to 125°C

Process

Compatible with infrared reflow, lead free soldering and pick and place SMT machines.

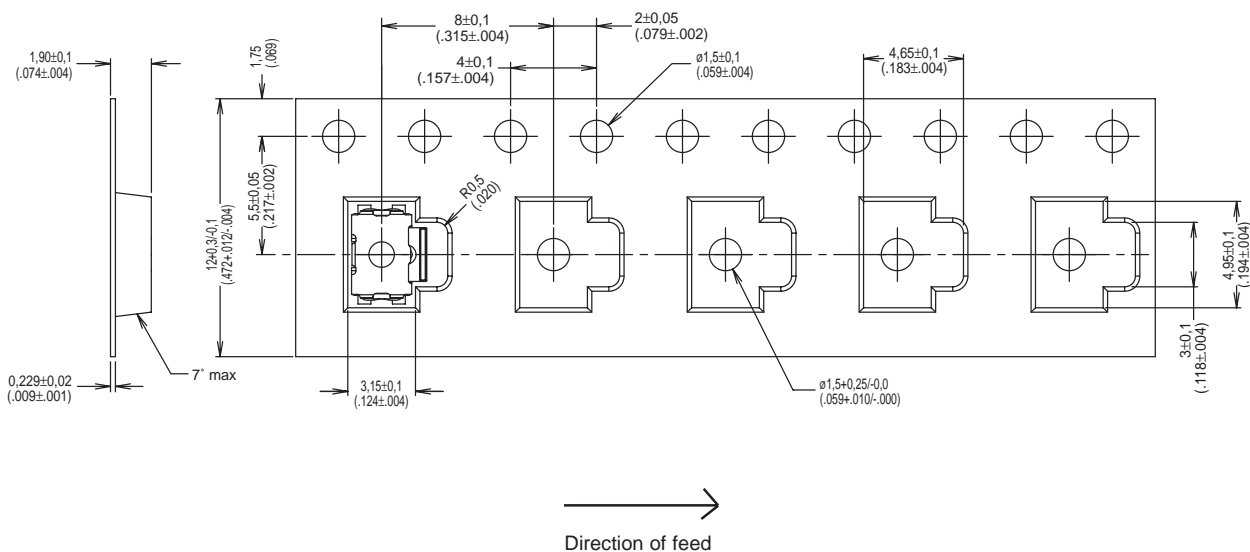
How To Order

Our easy build-a-switch concept allows you to mix and match options to create the switch you need. To order, select desired option from each category and place it in the appropriate box.



KMS Series Microminiature Side Actuated Tact Switch for SMT

TAPE & REEL



Tactile Switches
B