



Features

- Distributed constant type LC filter. Prevents ringing caused by circuit impedance. Suitable for high speed digital circuits and visual line circuits.
- Stable noise attenuation over wide frequency ranges.
- Low profile (T=0.85mm max.) suitable for miniature electronic equipments.
- First class auto-placement

Applications

- PCs, Laser Printers, Cellular Phone, Clock Data Lines for LCD Display
- High Speed Video Signal Circuits and interface circuits
- High Speed Digital Circuits
- Anti-Noise Solution
Achieves effective noise suppression in noisy high speed circuits without signal waveform distortion

How to Order

KNF 21 050 - W 3
 ① ② ③ ④ ⑤

① Series

② Size EIA (EIAJ)
 32 :1206 (3216)
 21 :0805 (2012)

③ Frequency

025	25MHz	200	200MHz
050	50MHz	400	400MHz
100	100MHz		

④ Taping Direction (See Table 1)

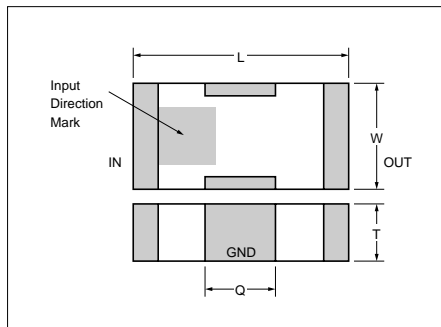
W: Standard

⑤ Quantity per Reel

3	3000pcs
----------	---------

Dimensions

(Unit : mm)

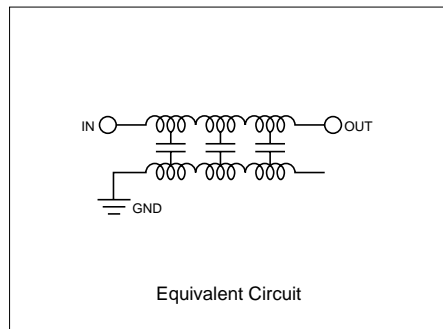


	KNF32	KNF21
L	3.20±0.20	2.00±0.20
W	1.60±0.20	1.25±0.20
T	1.00±0.20	0.80±0.15
Q	0.60±0.30	0.40±0.30

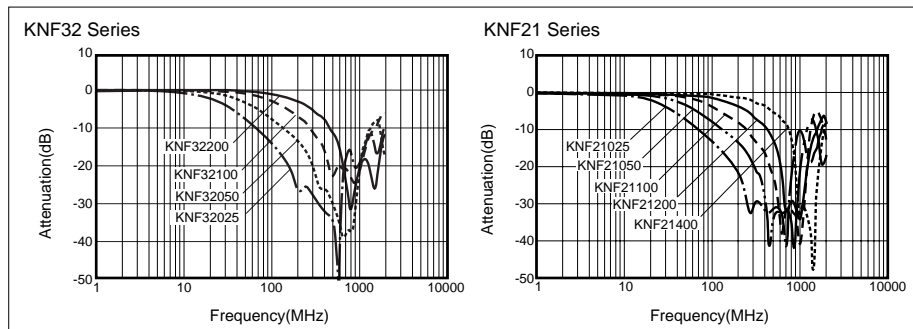
Specification

Part Number	Cut off Freq. (MHz)	Capacitance (+50/-20%) (pF)	20dB Attenuation (Typical)	Rated current(mA)	Rated voltage(VDC)
KNF32025	25MHz	235pF	200- 600MHz	200mA	25VDC
KNF32050	50MHz	130pF	350- 850MHz		
KNF32100	100MHz	65pF	450- 950MHz		
KNF32200	200MHz	33pF	700-1200MHz	150mA	
KNF21025	25MHz	235pF	200- 600MHz		
KNF21050	50MHz	130pF	350- 850MHz		
KNF21100	100MHz	65pF	450- 950MHz		
KNF21200	200MHz	33pF	700-1200MHz		
KNF21400	400MHz	17pF	900-1400MHz		

*Cut off Frequency at Attenuation typical 3dB, Max 6dB
 Operating Temperature: -25 to 85(°C)



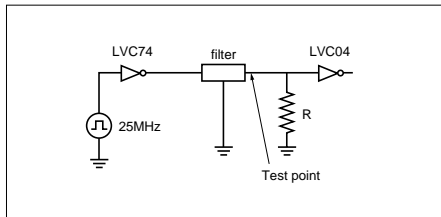
Frequency Characteristics



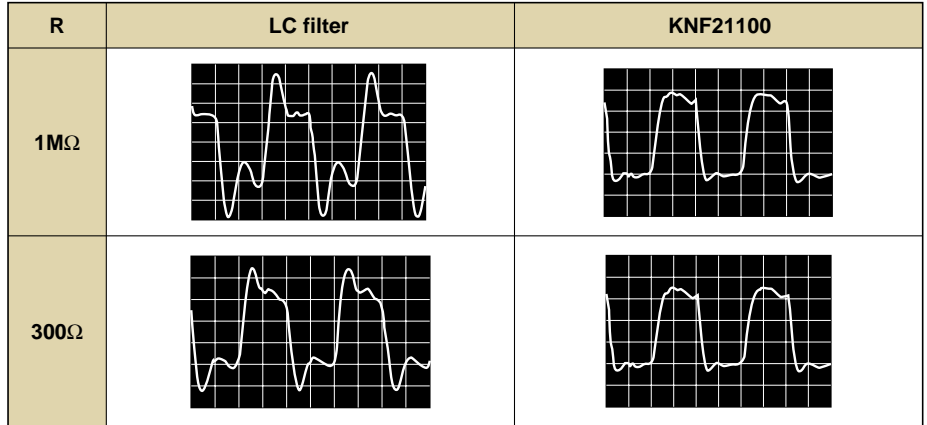
<Impedance Matching Free>

- Stable attenuation against impedance change
- Good impedance matching without ringing on distortion even at the time of IC ON/OFF and pattern layout change

Test circuit

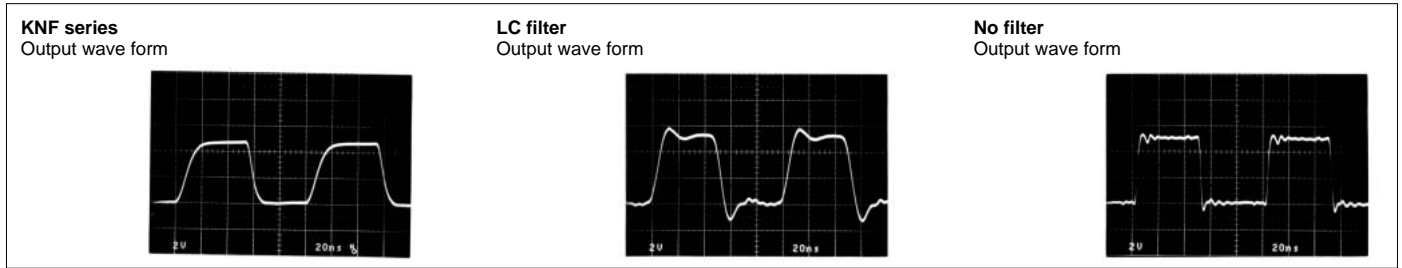


Output wave form(Clock frequency 25MHz)



<No Ringing>

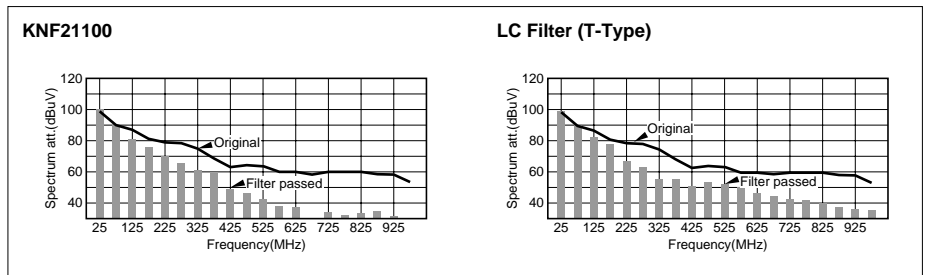
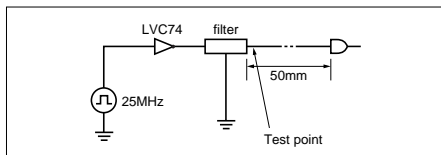
Excellent impedance matching



- Wide attenuation up to high frequency range without distortion

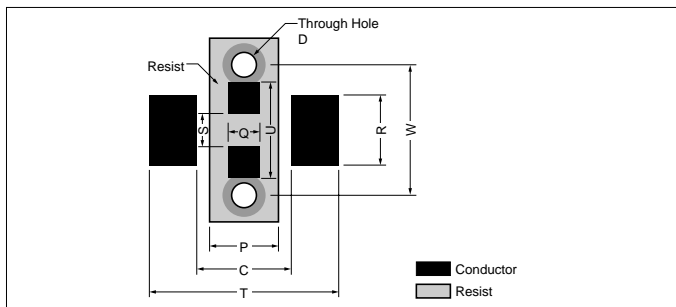
Wide attenuation bandwidth

Test circuit



Recommended land pattern

(Unit : mm)



	T	W	R	C	P	Q	S	D	U
KNF21	3.20	2.30	1.00	1.20	0.80	0.40	0.60	0.3-0.4	2.00
KNF32	4.40	3.00	1.40	2.50	1.20	0.60	0.60	0.50	2.40

Packaging specification (Table 1)

- Taping (3,000/reel)

(Unit : mm)

