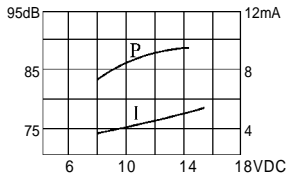
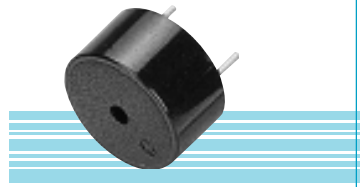


KPI-1410 series Piezo Buzzer

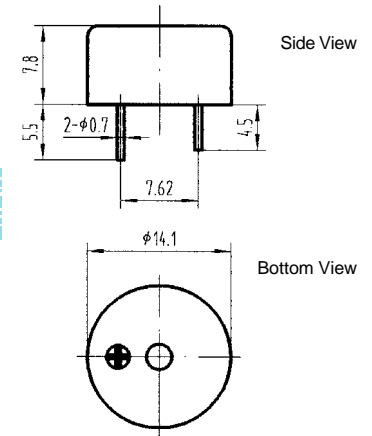


| | |
|---------------------------|----------------------|
| Model No | KPI-1410 |
| Rated Voltage | 12VDC |
| Operating Voltage | 1.5~16VDC |
| Max. Rated Current | 8mA at 12VDC |
| Min. Sound Pressure Level | 85dB at 12VDC / 10cm |
| Resonant Frequency | 4.0±0.5 KHz |
| Tone Nature | Continuous |
| Operating Temperature | -20~+80℃ |
| Weight | 2g |



color Black
PBT Housing Material
Pin Terminal

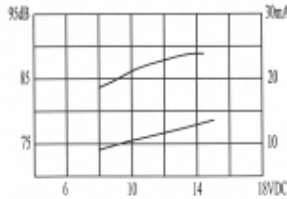
DIMENSIONS



all dimensions are in mm

* Value applying at rated voltage

KPI-1630 series Piezo Buzzer

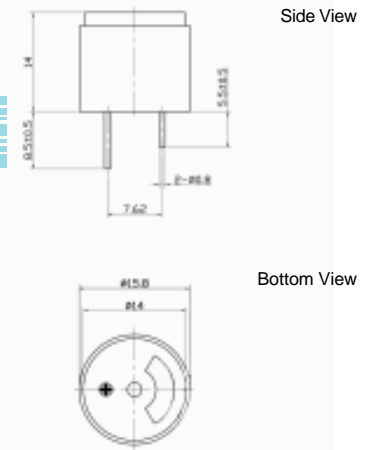


| | |
|---------------------------|--------------------|
| Model No | KPI-1630 |
| Rated Voltage | 12VDC |
| Operating Voltage | 1.5~18VDC |
| Max. Rated Current | 20mA at 12VDC |
| Rated Frequency | 4.0±0.5KHz |
| Min. Sound Pressure Level | 85dB at 12VDC/10cm |
| Tone Nature | Continuous |
| Housing Material/Color | PC/Black |
| Operating Temperature | -40~+80℃ |
| Store Temperature | -40~+90℃ |
| Weight | 2g |



color Black
PC Housing Material
Pin Terminal

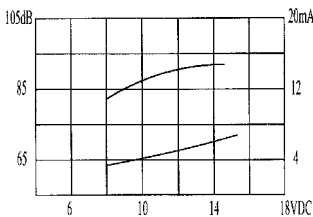
DIMENSIONS



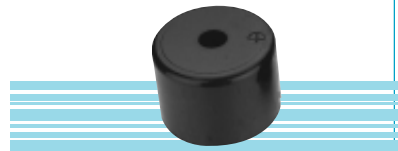
all dimensions are in mm

* Value applying at rated voltage

KPI-2329 series Piezo Buzzer

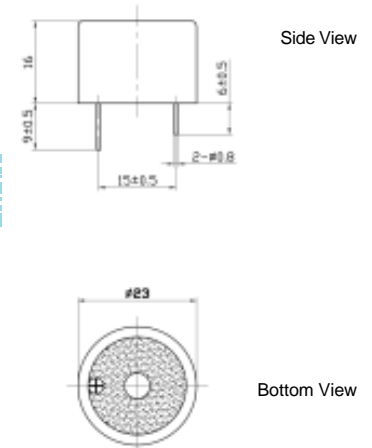


| | |
|---------------------------|--------------------|
| Model No | KPI-2329 |
| Rated Voltage | 12VDC |
| Operating Voltage | 8~24VDC |
| Max. Rated Current | 15mA at 12VDC |
| Min. Sound Pressure Level | 85dB at 12VDC/30cm |
| Tone Nature | Continuous |
| Resonant Frequency | 2.9±0.5KHz |
| Housing Material / Color | PC/Black |
| Operating Temperature | -20~+80℃ |
| Store Temperature | -30~+100℃ |
| Weight | 5g |



color Black
PC Housing Material
Pin Terminal

DIMENSIONS



all dimensions are in mm

* Value applying at rated voltage

The information contained herein is believed to be correct, but no guarantee for accuracy, completeness, DSW Electronics Ltd. reserves the right to make changes without notification.