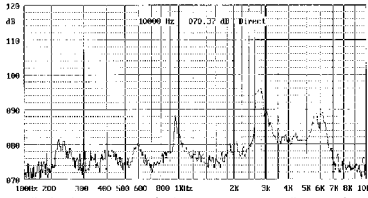


## KPM09-04B8 series Magnetic Buzzer

### FREQUENCY RESPONSE

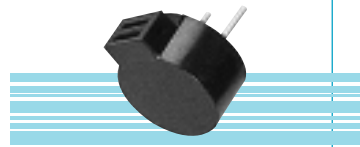
[actual curve of type]



applied voltage: 1.5 v, 1/2 duty, square wave distance for measurement: 10cm

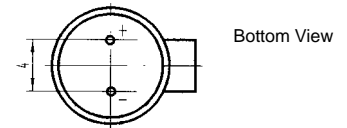
Model No	KPM09-04B8
Rated Voltage	1.5
Operating Voltage	1~2V
Max. Rated Current	80mA
Coil Resistance (DC)	5.5 $\Omega$ A11,
Coil Impedance (AC)	9.5 $\Omega$ A31,
Min. Sound Pressure Level	80dB/10cm
Resonant Frequency	2731Hz
Operating Temperature	-20~+70 $\varnothing$
Weight	2g

\* Value applying at rated voltage

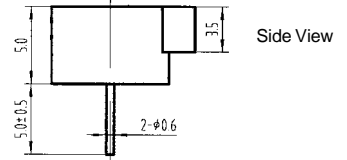


color Black  
PBT Housing Material  
Pin Terminal

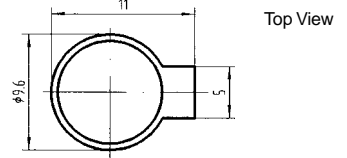
### DIMENSIONS



Bottom View



Side View



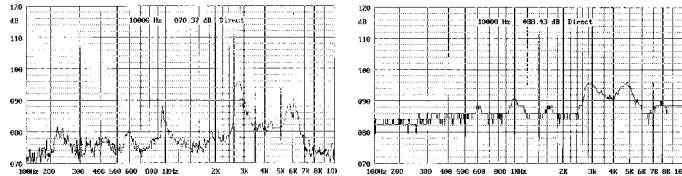
Top View

all dimensions are in mm

## KPM09-04B series Magnetic Buzzer

### FREQUENCY RESPONSE

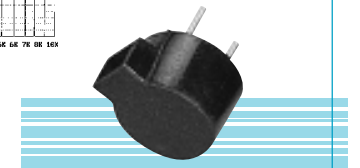
[actual curve of type]



applied voltage: 1.5 v, 1/2 duty, square wave distance for measurement: 10cm

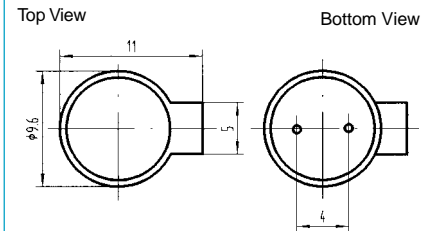
Model No	KPM09-04B3	KPM09-04B4
Rated Voltage	1.5V	1.5V
Operating Voltage	1~2V	1~2V
Max. Rated Current	80mA	80mA
Coil Resistance (DC)	5.5 $\Omega$ A11,	5.5 $\Omega$ A11,
Coil Impedance (AC)	9.5 $\Omega$ A31,	9.5 $\Omega$ A31,
Min. Sound Pressure Level	85dB/10cm	85dB/10cm
Resonant Frequency	2731Hz	3050Hz
Operating Temperature	-20~+70 $\varnothing$	-20~+70 $\varnothing$
Weight	1g	1g

\* Value applying at rated voltage



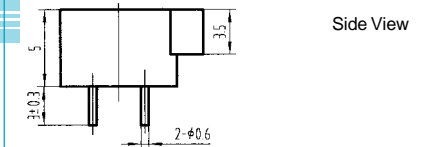
color Black  
PBT Housing Material  
Pin Terminal

### DIMENSIONS



Top View

Bottom View



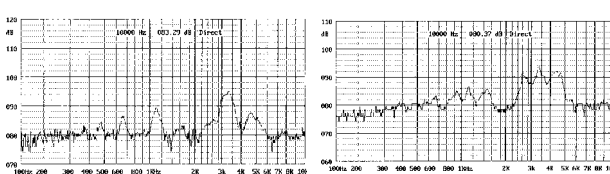
Side View

all dimensions are in mm

## KPM09A series Magnetic Buzzer

### FREQUENCY RESPONSE

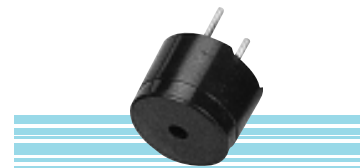
[actual curve of type]



applied voltage: 1.5 v, 1/2 duty, square wave distance for measurement: 10cm

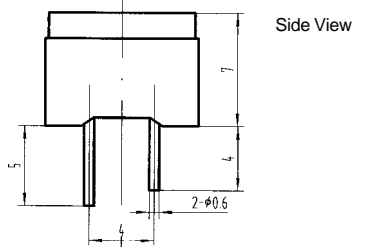
Model No	KPM09A	KPM09A1
Rated Voltage	1.5V	1.5V
Operating Voltage	1~2V	1~2V
Max. Rated Current	80mA	80mA
Coil Resistance (DC)	5.5 $\Omega$ A11,	5.5 $\Omega$ A11,
Coil Impedance (AC)	9.5 $\Omega$ A31,	9.5 $\Omega$ A31,
Min. Sound Pressure Level	80dB/10cm	80dB/10cm
Resonant Frequency	3100Hz	2731Hz
Operating Temperature	-20~+70 $\varnothing$	-20~+70 $\varnothing$
Weight	1g	1g

\* Value applying at rated voltage

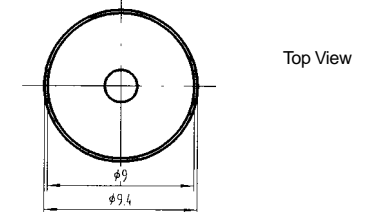


color Black  
PBT Housing Material  
Pin Terminal

### DIMENSIONS



Side View



Top View

all dimensions are in mm