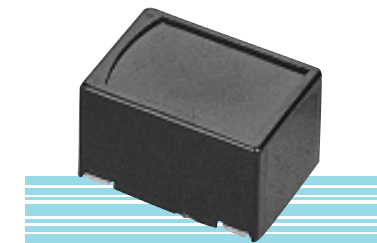
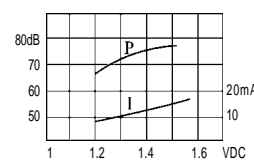
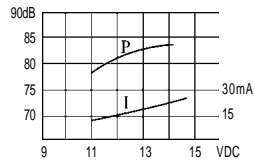
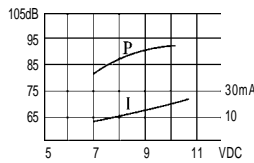
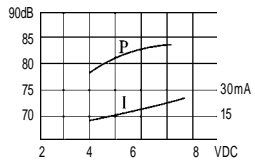
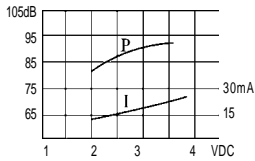


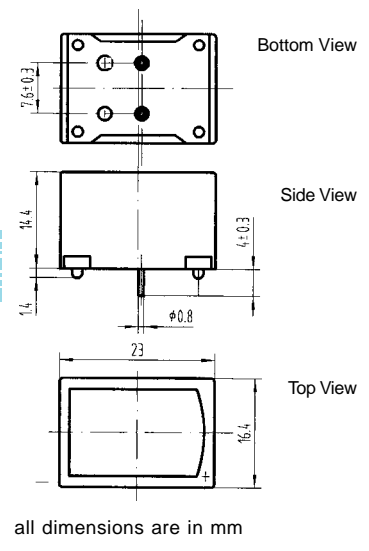
KPMB-2200P series Mechanical Buzzer



color Black
ABS Housing Material
Pin Terminal



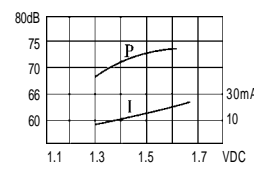
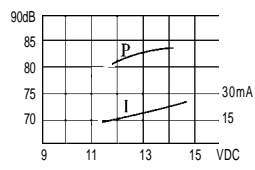
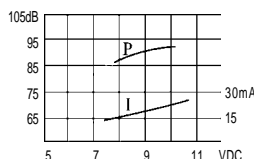
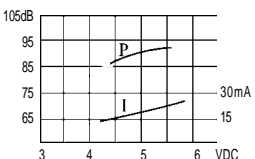
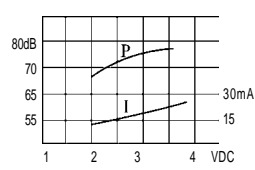
DIMENSIONS



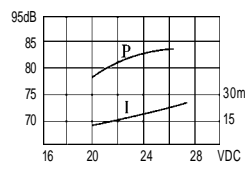
| Model No | KPMB-2203P | KPMB-2206P | KPMB-2209P | KPMB-2212P | KPMB-2215P | KPMB-2224P |
|---------------------------|-------------------|-------------------|-------------------|--------------------|---------------------|--------------------|
| Rated Voltage | 3VDC | 6VDC | 9VDC | 12VDC | 1.5VDC | 24VDC |
| Operating Voltage | 2~4VDC | 4~8VDC | 6~12VDC | 9~15VDC | 1~2VDC | 15~27VDC |
| Max. Rated Current | 25mA at 3VDC | 25mA at 6VDC | 25mA at 9VDC | 25mA at 12VDC | 20mA at 1.5VDC | 25mA at 24VDC |
| Min. Sound Pressure Level | 70dB at 3VDC/20cm | 75dB at 6VDC/20cm | 75dB at 9VDC/20cm | 80dB at 12VDC/20cm | 70dB at 1.5VDC/20cm | 80dB at 24VDC/20cm |
| Resonant Frequency | 400jA100Hz | 400jA100Hz | 400jA100Hz | 400jA100Hz | 400jA100Hz | 400jA100Hz |
| Operating Temperature | -20~+60jæ | -20~+60jæ | -20~+60jæ | -20~+60jæ | -20~+60jæ | -20~+60jæ |
| Weight | 10g | 10g | 10g | 10g | 10g | 10g |

* Value applying at rated voltage

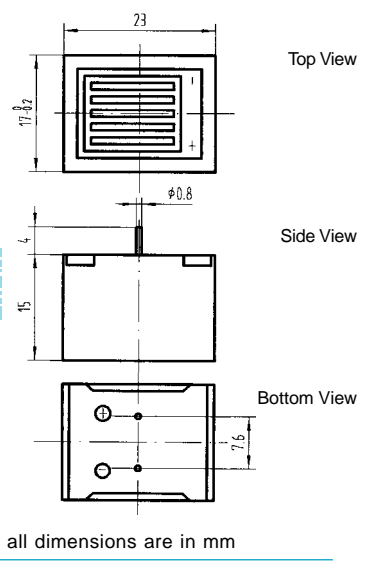
KPMB-2300P series Mechanical Buzzer



color Black
ABS Housing Material
Pin Terminal



DIMENSIONS



| Model No | KPMB-2303P | KPMB-2306P | KPMB-2309P | KPMB-2312P | KPMB-2315P | KPMB-2324P |
|---------------------------|-------------------|-------------------|-------------------|--------------------|---------------------|--------------------|
| Rated Voltage | 3VDC | 6VDC | 9VDC | 12VDC | 1.5VDC | 24VDC |
| Operating Voltage | 2~5VDC | 4~8VDC | 6~12VDC | 9~15VDC | 1~2VDC | 15~27VDC |
| Max. Rated Current | 25mA at 3VDC | 25mA at 6VDC | 25mA at 9VDC | 25mA at 12VDC | 25mA at 1.5VDC | 25mA at 24VDC |
| Min. Sound Pressure Level | 75dB at 3VDC/20cm | 75dB at 6VDC/20cm | 75dB at 9VDC/20cm | 75dB at 12VDC/20cm | 70dB at 1.5VDC/20cm | 75dB at 24VDC/20cm |
| Resonant Frequency | 400jA100Hz | 400jA100Hz | 400jA100Hz | 400jA100Hz | 400jA100Hz | 400jA100Hz |
| Operating Temperature | -20~+60jæ | -20~+60jæ | -20~+60jæ | -20~+60jæ | -20~+60jæ | -20~+60jæ |
| Weight | 10g | 10g | 10g | 10g | 10g | 10g |

* Value applying at rated voltage

The information contained herein is believed to be correct, but no guarantee for accuracy, completeness DSW Electronics Ltd. reserves the right to make changes without notification.